

RESOURCE AND PATIENT MANAGEMENT SYSTEM

# **Data Warehouse Export System**

(BDW)

## **Installation Guide and Release Notes**

Version 1.0 Patch 12  
July 2026

Office of Information Technology  
Division of Information Technology

# Table of Contents

<b>1.0</b>	<b>Release Notes .....</b>	<b>1</b>
<b>2.0</b>	<b>Installation Notes .....</b>	<b>2</b>
2.1	Contents of Distribution .....	2
2.1.1	Required Resources .....	2
2.2	Before You Begin: Installation Issues .....	2
<b>3.0</b>	<b>Installation Instructions .....</b>	<b>3</b>
3.1	Pre-installation Instructions .....	3
3.2	Installation Instructions .....	4
<b>4.0</b>	<b>Sample Installation .....</b>	<b>6</b>
4.1	Sample Install.....	6
<b>5.0</b>	<b>Installation Configuration .....</b>	<b>11</b>
5.1	Post-Installation.....	11
5.1.1	BCOM-IHS COMMUNICATION SUPPORT .....	11
	<b>Acronym List.....</b>	<b>13</b>
	<b>Contact Information .....</b>	<b>14</b>

## Preface

This document contains the installation instructions for the Data Warehouse Export System, v1.0 p12. The export is being moved from using SendTo to using the IHS Communication Support package (BCOM).

**Note:** There are pre-installation steps that must be followed.

## 1.0 Release Notes

Data Warehouse Export System (BDW) p12 (v1.0 p12) contains the following features.

Table 1: Features and Descriptions

File	Description
97560	BDW: Modify the exports "SendTo" Option to use BCOM
111632	BDW: Data extract request from NPIRs

## 2.0 Installation Notes

**Prefix:** BDW

**Current Version:** 1.0 p12

### 2.1 Contents of Distribution

Table 2: Contents of Distribution

File	Description
bdw_0100.12k	v1.0 p12 KIDS installation file
bdw_0100.12b	v1.0 p12 Global KIDS installation file
bdw_0100.12i.pdf	Installation Guide and Release Notes
bdw_0100.12t.pdf	Technical Manual

#### 2.1.1 Required Resources

- Kernel v8.0 p1018 (XU\*8.0\*1018) or later
- FileMan v22.0 p1018 (DI\*22.0\*1018) or later
- BDW v1.0 p11 (bdw\*1.0\*11) bdw\_0100.11k)
- IHS Communications Support v1.0 (BCOM\*1.0)

### 2.2 Before You Begin: Installation Issues

1. Make a copy of this distribution for offline storage.
2. Print all notes and readme files.
3. Capture the terminal output during the installation to ensure an audit trail if any problems arise.

## 3.0 Installation Instructions

### 3.1 Pre-installation Instructions

For p12, because the Data Warehouse Export System exports to the national database are being moved from using SendTo to using the IHS Communication Support package (BCOM), you must:

1. Check to see if there is a folder in the export directory called “archive”. To determine what the export directory is, using FileMan’s inquire option, go to the RPMS SITE file and check what the FILE EXPORT PATH is.

```

OUTPUT FROM WHAT FILE: RPMS SITE//
Select RPMS SITE LOCATION NAME: 2011 DEMO HOSPITAL ALBUQUERQUE
ALB
UQUERQUE 01 8999
ANOTHER ONE:
STANDARD CAPTIONED OUTPUT? Yes// (Yes)
Include COMPUTED fields: (N/Y/R/B): NO// - No record number (IEN), no
Computed
Fields

NUMBER: 1 LOCATION NAME: 2011 DEMO HOSPITAL
PATIENT CARE COMPONENT PRESENT: YES UNIVERSAL LOOKUP FOR VISITS:
ALLOWED
THIRD-PARTY BILLING PRESENT: YES MFI RUNNING: NOT USED
QMAN RUNNING: Y OPERATING SYSTEM: DOS
PCC FILE 200 CONVERSION: YES
DATE PCC VISIT RELINKER RUN: AUG 26, 2025
FILE IMPORT PATH: G:\IMPORT FILE EXPORT PATH: G:\EXPORT
LEAD DIGITS FOR RECORD IDS: 505430

```

Figure 3-1: RPMS SITE data

List the contents of the export directory (in this case G:\) and check for folder called “archive”.

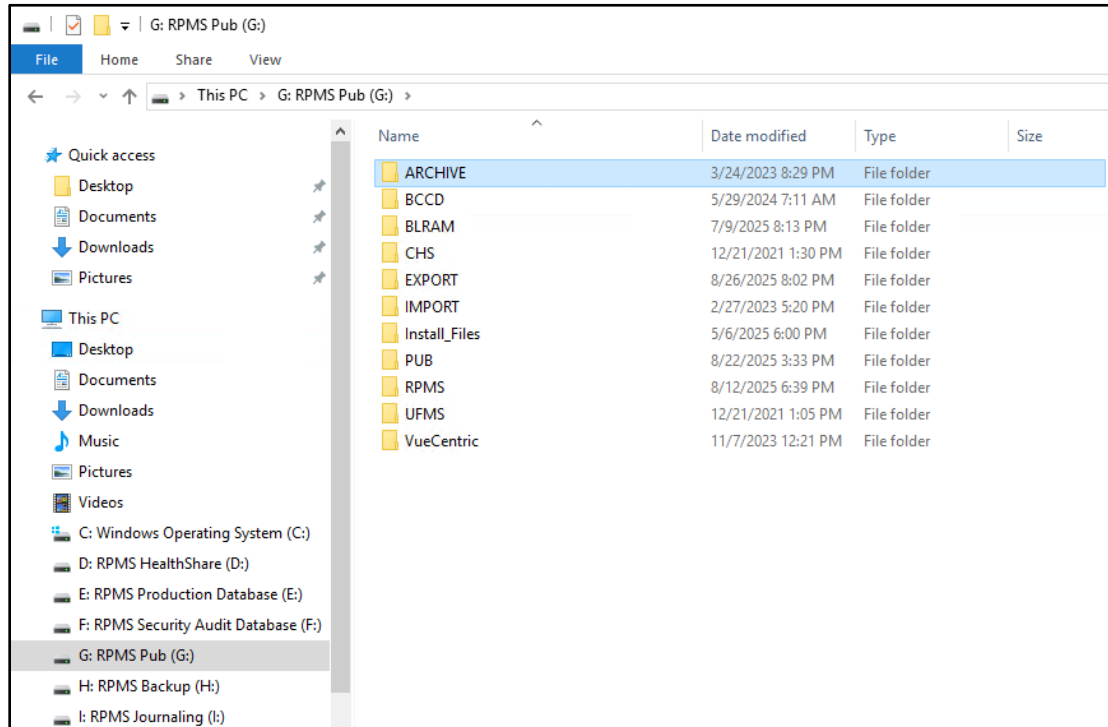


Figure 3-2: RPMS SITE Export Directory

**Note:** If the archive folder already exists, you can skip step 2 and continue to Section 3.2.

2. If the folder does not exist, you must create one. The archive folder should be a folder in the FILE EXPORT PATH directory. For example, the archive folder (from above) should be in the same folder as the EXPORT directory, e.g. G:\archive. If the FILE EXPORT PATH is /usr4/pub/export, the archive folder should be /usr4/pub/archive.

## 3.2 Installation Instructions

**Note:** This installation is a KIDS install. For any questions on how to do a KIDS installation, please contact your Area Office information systems support personnel.

In all namespaces running the Data Warehouse Export System:

1. Load global build file bdw\_0100.12b. This is the global build file.
  - a. Load the distribution into KIDS using **Option 1** on the **KIDS Installation menu**. The distribution was released in a file named **bdw\_0100.12b**.

2. Install **bdw\_0100.12k**. This is the KIDS file for the BDW application.
  - a. Load the distribution into KIDS using Option 1 on the KIDS Installation menu. The distribution was released in a file named bdw\_0100.12k.
  - b. Verify the load using Option 2 on the KIDS Installation menu.
  - c. Consider using Options 3 and 4 on the KIDS Installation menu to print and compare the Transport global.
  - d. Install the distribution using Option 6 on the Installation menu.
  - e. To see results, use the KIDS Install File Print option to view/print the bdw\*1.0\*12

**Note:** For assistance with a KIDS install, call the Area Office support personnel.

Proceed to Section 5.0 for further information and setup instructions.

**Note:** Please read the Post-Installation notes for more information.

For AIX system, to avoid any issues with patch installation, sites should log in as root (lowercase) or log in with AIX credentials and use the **su** command to become root, and then perform the patch installation.

## 4.0 Sample Installation

### 4.1 Sample Install

```
CMBB>D ^XPDKRN

KIDS 8.0

Select KIDS OPTION: LOAD A DISTRIBUTION
Enter a Host File: g:\pub\bdw\p12\bdw_0100.12b

KIDS Distribution saved on Aug 26, 2025@15:04:29
Comment: BDW 1.0 Patch 12 Global

This Distribution contains Transport Globals for the following Package(s):
Build BDW GLOBAL *1.0*12 has been loaded before, here is when:
      BDW GLOBAL *1.0*12   Install Completed
                          was loaded on Dec 03, 2025@09:29:53
OK to continue with Load? NO// y YES

Distribution OK!

This is a Global Distribution. It contains Global(s) that will
update your system at this time. The following Global(s) will be installed:

^BDWBCOM   Replace
**WARNING - Global will be KILLED before install,
Check global protection on ALL systems before continuing.

If you continue with the Load, the Global(s) will be
Installed at this time.

Want to Continue with Load? YES//
Loading Distribution...

      BDW GLOBAL *1.0*12

Globals will now be installed, OK? YES//

Install Started for BDW GLOBAL *1.0*12 :
      Dec 03, 2025@09:31:58

Installing Globals:

^BDWBCOM
      Dec 03, 2025@09:31:58

Updating KIDS files...
```

```
No link to PACKAGE file

NO Install Message sent to FORUM

BDW GLOBAL *1.0*12 Installed.
      Dec 03, 2025@09:31:58

CMBB>d ^XPKRN

KIDS 8.0

Select KIDS OPTION: LOAD A DISTRIBUTION
Enter a Host File: g:\pub\bdw\p12\bdw_0100.12k

KIDS Distribution saved on Dec 03, 2025@09:25:43
Comment: DATA WAREHOUSE EXPORT V1.0 PATCH 12

This Distribution contains Transport Globals for the following Package(s):
Build BDW*1.0*12 has been loaded before, here is when:
      BDW*1.0*12   Install Completed
                  was loaded on Dec 01, 2025@12:01:23
      BDW*1.0*12   Install Completed
                  was loaded on Dec 03, 2025@09:30:55
OK to continue with Load? NO// y YES

Distribution OK!

Want to Continue with Load? YES//
Loading Distribution...

Build BDW*1.0*12 has an Environmental Check Routine
Want to RUN the Environment Check Routine? YES//
      BDW*1.0*12
Will first run the Environment Check Routine, BDW10P12

      Patch "XU*8.0*1018" is Present.
      Patch "DI*22.0*1018" is Present.
      Patch "BDW*1.0*11" is Present.
      Requires BCOM v1.0....Present.
Use INSTALL NAME: BDW*1.0*12 to install this Distribution.

Select KIDS OPTION: INSTALL PACKAGE(S)
Select INSTALL NAME:   BDW*1.0*12   Loaded from Distribution
12/3/25@10:11
:09
      => DATA WAREHOUSE EXPORT V1.0 PATCH 12   ;Created on Dec 03,
2025@09:25:43
```





```
DATA
section.....
.....
.....
END section.

Compile completed with 0 warnings and 0 errors.
Linking...  Filing generated routines...

Routine IS00069    ...Filed
Routine IS00069A  ...Filed
Routine IS00069B  ...Filed

Generation for message: HL IHS DW1
A31.....
.....
.....

The following scripts were generated:
    Generated: HL IHS DW1 A31-O

Compiling Script: Generated: HL IHS DW1 A31-O
..
MUMPS section....
DATA
section.....
.....
.....
.....
END section.

Install Completed
```

Figure 4-1: Installation Completed

## 5.0 Installation Configuration

### 5.1 Post-Installation

#### 5.1.1 BCOM-IHS COMMUNICATION SUPPORT

During the post-install process, two new BCOM business objects are set up to transmit the Data Warehouse Export (BDW) export files to the National Data Warehouse (NDW) maintained by the National Patient Information Reporting System (NPIRS) Team. Previously these files were transmitted via the SendTo process. The two new business objects are called GetBDW and SendBDW.

If you would like to review the new Business Operations, sign on to the Management Portal to check that the new BDW processes have been set up. Look to the right and see that BCOM namespace is **Running**. For example, the test namespace in Figure 5-1 is CMBC. Click **View details**.

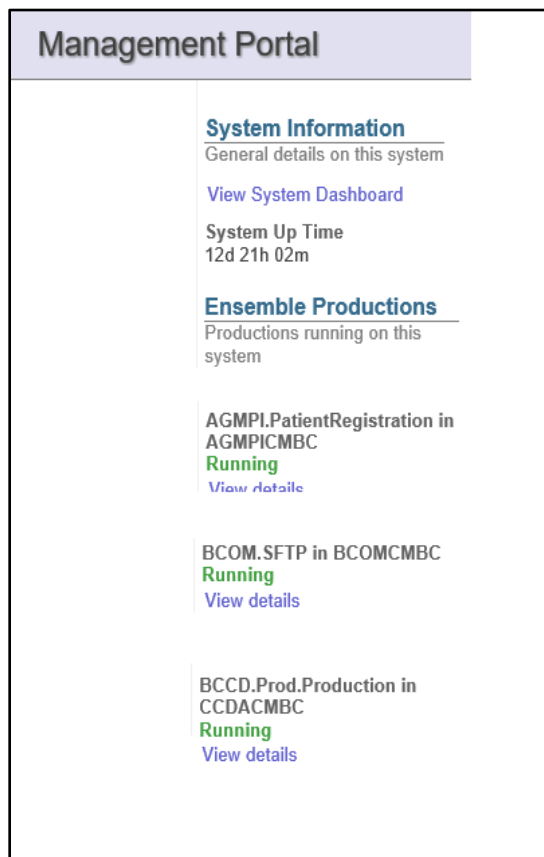


Figure 5-1: Management Portal

After the production is opened, check that the **GetBDW** and **SendBDW** business objects were created (Figure 5-2).

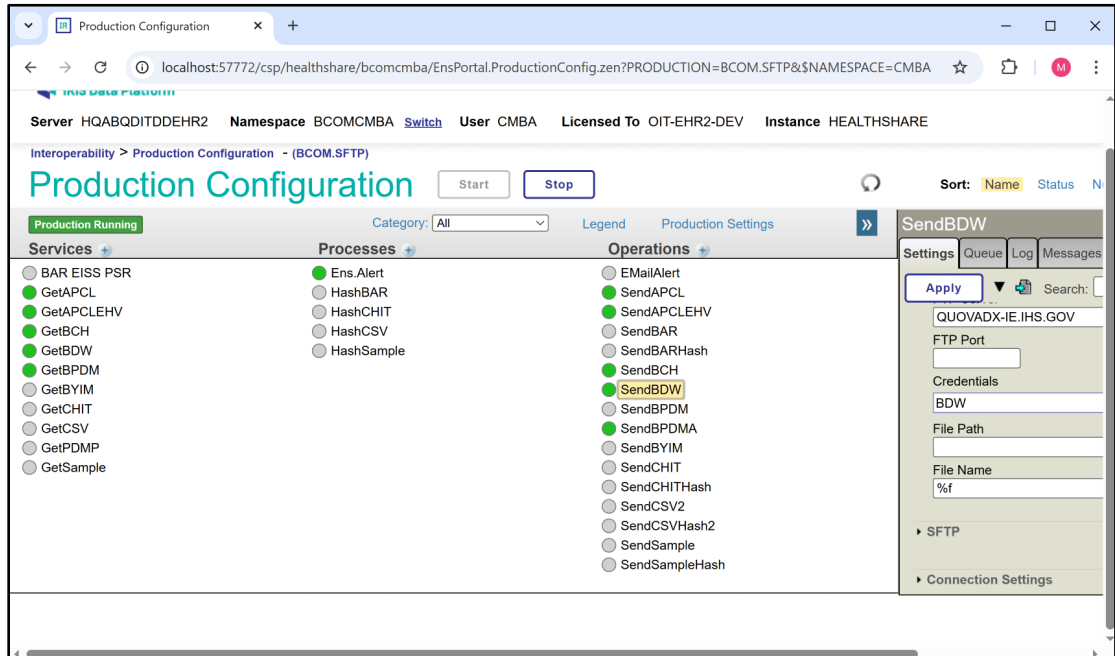


Figure 5-2: Update Setup

Check the GetBDW and SendBDW settings to make sure the Export and Achieve folder path is the same path listed in Section 3.1 Pre-Installation Instructions.

Using FileMan’s inquire option, go to the RPMS SITE file and identify the FILE EXPORT PATH.

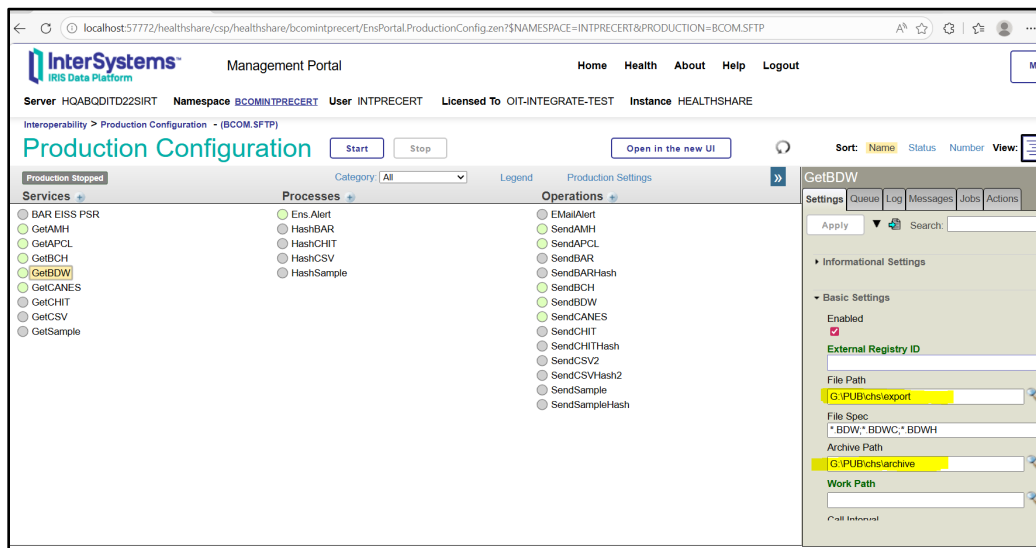


Figure 5-3: File Path and Archive Path

## Acronym List

Acronym	Meaning
BDW	Data Warehouse Export namespace
BCOM	IHS Communication Support namespace
NDW	National Data Warehouse
NPIRS	National Patient Information Reporting System
RPMS	Resource and Patient Management System
XB	IHS/VA Utilities Namespace
XU	VA Kernel Namespace

## Contact Information

If you have any questions or comments regarding this distribution, please contact the IT Service Desk (IHS).

**Phone:** (888) 830-7280 (toll free)

**Web:** <https://www.ihs.gov/itsupport/>

**Email:** [itsupport@ihs.gov](mailto:itsupport@ihs.gov)