



RESOURCE AND PATIENT MANAGEMENT SYSTEM

# **Clinical Reporting System**

(BGP)

## **Installation Guide and Release Notes**

Version 23.1  
July 2023

Office of Information Technology  
Division of Information Technology

# Table of Contents

<b>1.0</b>	<b>Release Notes .....</b>	<b>1</b>
1.1	Key Changes in v23.1.....	1
1.1.1	Logic Changes to National GPRA/GPRAMA Report Measures.....	1
1.1.2	Key Logic Changes to Non-GPRA Measures.....	5
1.1.3	Additional Key Enhancements and Revisions .....	5
1.1.4	Feature Numbers Included in Release .....	5
<b>2.0</b>	<b>Installation Notes.....</b>	<b>7</b>
2.1	CRS Distribution Contents and Required Resources .....	7
2.2	Contents of Distribution .....	7
2.2.1	Required Resources.....	7
2.3	Visual CRS (GUI) Distribution Contents and Required Resources.....	8
2.3.1	Contents of GUI CRS Distribution .....	8
2.3.2	Required Resources for GUI CRS.....	8
2.4	Before You Begin: Installation Issues .....	8
<b>3.0</b>	<b>Installation Instructions .....</b>	<b>10</b>
3.1	Installation of the CRS GUI.....	11
3.1.1	Installation on the RPMS Server.....	11
3.1.2	Installation on Each User's (Client) PC.....	11
<b>4.0</b>	<b>Sample Installations .....</b>	<b>13</b>
4.1	Sample Installation of CRS on RPMS Server .....	13
4.2	Sample Installation of the CRS GUI.....	20
<b>5.0</b>	<b>Installation Configuration .....</b>	<b>24</b>
	<b>Acronym List .....</b>	<b>25</b>
	<b>Contact Information .....</b>	<b>26</b>

## Preface

The Government Performance and Results Act (GPRA) requires federal agencies to report annually on how the agency measured against the performance targets set in its annual plan. The Indian Health Service (IHS) GPRA measures include clinical prevention and treatment, quality of care, infrastructure, and administrative efficiency functions.

The IHS Clinical Reporting System (CRS) is a Resource and Patient Management System (RPMS) software application designed for national reporting, as well as Area Office and local monitoring of clinical GPRA and developmental measures. CRS was first released for FY 2002 performance measures (as GPRA+) and is based on a design by the Aberdeen Area Office (GPRA2000).

This manual provides installation instructions for CRS Version 23.1. Version 23.1 adds fiscal year (FY) 2023 clinical performance measures to existing FY 2002 through FY 2022 measures.

CRS is the reporting tool used by the IHS Office of Planning and Evaluation to collect and report clinical performance results annually to the Department of Health and Human Services and to Congress.

Each year, an updated version of CRS software is released to reflect changes in the logic descriptions of the different denominators and numerators. Additional performance measures may also be added. Local facilities can run reports as often as desired and can also use CRS to transmit data to their Area Office. The Area Office can use CRS to produce an aggregated Area Office report for either annual GPRA or Area Office director performance reports.

CRS produces reports on demand from local RPMS databases for both GPRA and developmental clinical performance measures that are based on RPMS data, thus eliminating the need for manual chart audits for evaluating and reporting clinical measures.

To produce reports with comparable data across every facility, the GPRA measures definitions were translated into programming code with the assistance of clinical subject matter experts. CRS uses predefined taxonomies to find data items in the RPMS Patient Care Component to determine if a patient meets the performance measure criteria. Taxonomies contain groups of codes (e.g., diagnoses or procedures) or site-specific terms. Each performance measure topic has one or more defined denominators and numerators.

Administrative and clinical users can review individual or all measures at any time to:

- Identify potential data issues in their RPMS, for example, missing or incorrect data.
- Monitor their site's performance against past national performance and upcoming agency goals.
- Identify specific areas where the facility is not meeting the measure to initiate business-process or other changes.
- Quickly measure the impact of process changes on performance measures.
- Identify IHS Area Offices meeting or exceeding measures to provide lessons learned.

RPMS CRS Users include:

- Area Office and site quality improvement staff.
- Compliance officers.
- GPRA coordinators.
- Clinical staff, such as physicians, nurses, nurse practitioners, and other providers.
- Area Office directors.
- Any staff involved with quality assurance initiatives.
- Staff who run the various CRS reports.

## 1.0 Release Notes

This manual provides user instructions on installing Version 23.1 of the Clinical Reporting System (CRS). The manual provides installation instructions for both the RPMS server-side software and the Visual CRS graphical user interface (GUI).

### 1.1 Key Changes in v23.1

#### 1.1.1 Logic Changes to National GPRA/GPRAMA Report Measures

- GPRA Developmental Measures:
  - Added the following GPRA Developmental topics:
    - Diabetes: Blood Pressure Control
    - Diabetes: Nephropathy Assessment
    - Screening for Substance Use
    - Syphilis Screening
  - Added a new measure to Statin Therapy to Reduce Cardiovascular Disease Risk in Patients with Diabetes topic.
  - Updated codes and/or logic in the following topics: Statin Therapy to Reduce Cardiovascular Disease Risk in Patients with Diabetes topic; Access to Dental Service; Dental Sealants; Topical Fluoride; Adult Immunizations; Childhood Immunizations; Substance Use Disorder (SUD) in Women of Childbearing Age; Weight Assessment and Counseling for Nutrition and Physical Activity; Cardiovascular Disease and Blood Pressure Control; Appropriate Medication Therapy after a Heart Attack; HIV Screening; HIV Quality of Care; Hepatitis C Screening; Chlamydia Testing; Proportion of Days Covered by Medication Therapy; Concurrent Use of Opioids and Benzodiazepines; Optometry.
- Diabetes: Blood Pressure Control:
  - Removed ICD-9 diagnosis codes from BP documented definition.
- Statin Therapy to Reduce Cardiovascular Disease Risk in Patients with Diabetes:
  - Added ICD-10 Procedure codes 0210344, 02103D4, 0210444, 02104D4, 0211344, 02113D4, 0211444, 02114D4, 0212344, 02123D4, 0212444, 0212483, 02124D4, 0213344, 02133D4, 0213444, 02134D4 to CABG definition.
  - Added CPT codes 33510-33514, 33516-33519, 33521-33523, 33533-33536, S2205-S2209 to CABG definition to align with eCQM.

- Updated the following SNOMED data sets: PXRMI BGP ECQM MI, PXRMI BGP ECQM CD STROKE TIA, PXRMI BGP ECQM CABG, PXRMI BGP ECQM STATIN ADV, PXRMI BGP ECQM LIVER DIS, PXRMI BGP IPC HOSPICE, PXRMI BGP ECQM PALLIATIVE ENC, PXRMI BGP IPC NOT DONE MED.
- Updated Rhabdomyolysis definition to use SNOMED data set PXRMI BGP ECQM RHABDO.
- Updated Hepatitis A definition to use SNOMED data set PXRMI BGP IPC HEP A EVID.
- Updated Hepatitis B definition to use SNOMED data set PXRMI BGP ECQM HEP B.
- Removed ICD-9 diagnosis code from breastfeeding, Hepatitis A and Hepatitis B definitions.
- Removed HCPCS codes G0308-G0327, G0392, G0393 from ESRD definition (codes are either discontinued or have been reused) and added codes M1187, M1188.
- Removed HCPCS codes G0290, C9600, C9602, C9604, C9606, C9607 from PCI definition to align with eCQM.
- Removed HCPCS M1017 from palliative care definition (code is discontinued).
- Removed ICD-10 code Z22.51 from Hepatitis B definition.
- Updated medication taxonomy BGP PQA STATIN MEDS.
- Diabetes: Nephropathy Assessment:
  - Removed HCPCS codes G0308-G0327, G0392, G0393 from ESRD definition (codes are either discontinued or have been reused) and added codes M1187, M1188.
- Diabetic Retinopathy:
  - Removed ICD-9 procedure codes from diabetic retinal exam definition.
- Access to Dental Service:
  - Removed ICD-9 diagnosis code from documented dental visit definition.
  - Removed IHS Dental Tracking code 0007 from documented dental visit definition.
- Topical Fluoride:
  - Removed ICD-9 diagnosis from topical fluoride application definition.
- Influenza:
  - Removed HCPCS code G8108 from influenza definition (code is discontinued).

- Adult Immunizations:
  - Removed HCPCS code G8108 from influenza definition (code is discontinued).
  - Removed HCPCS code G8115 from pneumococcal definition (code is discontinued).
- Childhood Immunizations:
  - Removed HCPCS codes Q3021, Q3023 from Hepatitis B definition (codes are discontinued).
  - Removed HCPCS code G8115 from pneumococcal definition (code is discontinued).
  - Removed ICD-9 diagnosis codes from Hepatitis B definition.
- Cervical Cancer Screening:
  - Added LOINC codes 93777-1, 93778-9, 94425-6 to BGP HPV LOINC CODES taxonomy.
- Colorectal Cancer Screening:
  - Removed HCPCS codes G0213-G0215, G0231 from colorectal cancer definition (codes are discontinued).
  - Removed HCPCS codes G0107, G0394 from FIT definition (codes are discontinued).
- Tobacco Use and Exposure Assessment:
  - Removed ICD-9 diagnosis codes from tobacco screening, tobacco user, and smokers definitions.
  - Added HCPCS G0030 to tobacco screening definition.
  - Removed HCPCS codes G0375, G0376, G8455-G8457, G8402, G8453 from tobacco screening, tobacco users, smokers, and smokeless definitions (codes are discontinued).
- Tobacco Cessation:
  - Added HCPCS G0030 to tobacco cessation definition.
  - Removed HCPCS codes G0375, G0376, G8402, G8453 from tobacco cessation counseling definition (codes are discontinued).
- Alcohol Screening:
  - Removed ICD-9 diagnosis and procedure codes from alcohol screening, alcohol-related diagnosis or procedure, and alcohol-related patient education definitions.
- Screening, Brief Intervention, and Referral to Treatment (SBIRT):

- Removed ICD-9 diagnosis code from screening for risky or harmful alcohol use definition.
- Intimate Partner (Domestic) Violence Screening:
  - Removed ICD-9 diagnosis codes from IPV/DV diagnosis and IPV/DV counseling definitions.
- Depression Screening:
  - Removed ICD-9 diagnosis codes from depression screening and mood disorder definitions.
- Controlling High Blood Pressure – Million Hearts:
  - Removed ICD-9 diagnosis and procedure codes from pregnancy, miscarriage, and abortion definitions.
  - Removed HCPCS codes G0308-G0327, G0392, G0393 from ESRD definition (codes are either discontinued or have been reused) and added codes M1187, M1188.
- Statin Therapy for the Prevention and Treatment of Cardiovascular Disease:
  - Added ICD-10 Procedure codes 0210344, 02103D4, 0210444, 02104D4, 0211344, 02113D4, 0211444, 02114D4, 0212344, 02123D4, 0212444, 0212483, 02124D4, 0213344, 02133D4, 0213444, 02134D4 to CABG definition.
  - Added CPT codes 33510-33514, 33516-33519, 33521-33523, 33533-33536, S2205-S2209 to CABG definition to align with eCQM.
  - Updated the following SNOMED data sets: PXRMBGP ECQM MI, PXRMBGP ECQM CD STROKE TIA, PXRMBGP ECQM CABG, PXRMBGP ECQM STATIN ADV, PXRMBGP ECQM LIVER DIS, PXRMBGP IPC HOSPICE, PXRMBGP ECQM PALLIATIVE ENC, PXRMBGP IPC NOT DONE MED.
  - Updated Rhabdomyolysis definition to use SNOMED data set PXRMBGP ECQM RHABDO.
  - Updated Hepatitis A definition to use SNOMED data set PXRMBGP IPC HEP A EVID.
  - Updated Hepatitis B definition to use SNOMED data set PXRMBGP ECQM HEP B.
  - Removed ICD-9 diagnosis code from breastfeeding, Hepatitis A and Hepatitis B definitions.
  - Removed HCPCS codes G0308-G0327, G0392, G0393 from ESRD definition (codes are either discontinued or have been reused) and added codes M1187, M1188.



- Removed HCPCS codes G0290, C9600, C9602, C9604, C9606, C9607 from PCI definition to align with eCQM.
- Removed HCPCS M1017 from palliative care definition (code is discontinued).
- Removed ICD-10 code Z22.51 from Hepatitis B definition.
- Updated medication taxonomy BGP PQA STATIN MEDS.
- HIV Screening:
  - Removed ICD-9 diagnosis and procedure codes from pregnancy, miscarriage, and abortion definitions.

### 1.1.2 Key Logic Changes to Non-GPRA Measures

For key logic changes to non-GPRA measures, please refer to the *CRS 2023 (Version 23.1) Selected Measures Report Performance Measure List and Definitions* document located on the CRS website:

<https://www.ihs.gov/crs/software/fy23/>.

### 1.1.3 Additional Key Enhancements and Revisions

- Added Service code M (telemedicine) to allowable service codes for User Population denominator definitions.

### 1.1.4 Feature Numbers Included in Release

- 87500 – Statin Therapy measure updates - 2023 eCQM
- 92410 – Copy CRS files to v23.1 and update menus
- 92411 – Export files
- 92412 – Summaries
- 92413 – Lab/Medication Taxonomies
- 92414 – Manuals
- 92415 – GUI - add new version + testing
- 92416 – GUI - Help File
- 93687 – Substance Use Disorder (SUD) in Women of Childbearing Age
- 93688 – Streamline CABG and PCI definitions
- 93689 – Denominator definitions - include Telemedicine

- 93690 – Dental Visit definition - remove code
- 93691 – Syphilis Screening measure
- 93692 – Tobacco measures - New HCPCS codes
- 93693 – Remove ICD- 9 codes from pregnancy logic
- 93694 – Remove ICD- 9 codes from other logic
- 93695 – DM Blood Pressure Control - GPRA Developmental measure
- 93696 – Diabetes: Nephropathy Assessment - ESRD
- 93697 – Statin Therapy measure updates - GPRA Developmental
- 93698 – DM Blood Pressure Control - Elder Care
- 93699 – Alcohol Screening
- 93700 – SBIRT
- 93701 – New Screening for Substance Use measures
- 93702 – Remove Reused, Discontinued HCPCS codes
- 93702 – Remove Reused, Discontinued HCPCS codes

## 2.0 Installation Notes

**Note:** Read the entire Notes file prior to attempting any installation.

**Prefix:** BGP

**Current Version:** 23.1

**Note:** This distribution of the CRS contains Version 23.1 of CRS and the GUI front end to the CRS system. The server-side (i.e., “roll-and-scroll” or backend) version 23.1 of the package can be installed alone or with both the GUI and the server-side versions. Currently, there is no requirement to install the GUI.

Please install version 23.1 of CRS (bgp\_2310.k) at all sites regardless of whether the site opts to install and use the GUI portion of the package. Version 23.1 of CRS and the GUI have different requirements; please take note of the requirements section for each piece of the software.

### 2.1 CRS Distribution Contents and Required Resources

### 2.2 Contents of Distribution

Table 2-1: Contents of Distribution

File	Description
bgp_2310.k	Kernel Installation and Distribution System (KIDS) file containing software
bgp_231i.pdf	Installation guide in PDF format (this manual)
bgp_231t.pdf	Technical Manual in PDF format
bgp_231u.pdf	User Manual in PDF format
bgp_231u_visual.pdf	Visual CRS User Manual in PDF format
bgp_2310client.zip	Visual CRS software for Client's PC

#### 2.2.1 Required Resources

- Kernel v8.0 Patch 1018 (XU\*8.0\*1018) or later.
- FileMan v22.0 Patch 1018 (DI\*22.0\*1018) or later.

- Taxonomy v5.1 Patch 48 or later must be installed (atx\_0510.48k, atx\*5.1\*48).
- IHS Clinical Reporting System version 23.0 must be installed (bgp\_2300.k).

## 2.3 Visual CRS (GUI) Distribution Contents and Required Resources

### 2.3.1 Contents of GUI CRS Distribution

- bgp\_2310client.zip.

The following two files are contained in the zip file:

- bgp\_2310setup.exe.
- bgp\_2310.msi.

### 2.3.2 Required Resources for GUI CRS

Additional requirements for installing and using Visual CRS on a client's PC:

- On the RPMS Server:
  - BMX v4.0.
  - IHS Clinical Reporting System v23.1.
- On the Client (User's) PC:
  - Windows XP Service Pack 3 or higher.
  - Microsoft Office 2003 or later.
  - .NET Framework v4.0.

**Note:** If the CRS GUI will not be installed, ignore these requirements.

If the .NET Framework v4.0 is not installed, it will automatically be downloaded and installed when the client installation is started.

## 2.4 Before You Begin: Installation Issues

1. Make a copy of this distribution for offline storage.
2. Print all notes/readme files.
3. Create a printed audit trail in case there are any problems with the installation.

To capture terminal output during the installation, use an auxport printer attached to the terminal on which the installation is being performed.

## 3.0 Installation Instructions

**Note:** This installation is a KIDS install. For any questions on how to do a KIDS installation, please contact your Area Office information systems support personnel.

In all UCIs running the IHS CRS:

1. Ensure that users are unable to use the CRS for the duration of this installation.
2. Save all routines (^%RO (CACHE) in the BGPP\* namespace for use in returning to the prior existing version, if needed.

If no problems are noted with the new installation, remove saved routines from your system seven to ten days after this install.

3. Install **bgp\_2310.k**. This is the KIDS file for the IHS CRS:
  - a. Load the distribution into KIDS using **Option 1** on the **KIDS Installation menu**. The distribution was released in a file named **bgp\_2310.k**.
  - b. Verify the load using **Option 2** on the **KIDS Installation** menu.
  - c. Consider using **Options 3** and **4** on the **KIDS Installation** menu to print and compare the Transport global.
  - d. Install the distribution using **Option 6** on the **Installation** menu.
  - e. To see results, use the **KIDS Install File Print** option to view/print the IHS CLINICAL REPORTING v23.1 entry.

**Note:** For assistance with a KIDS install, call the Area Office support personnel.

4. After the install completes, assign security keys, as appropriate, using Table 3-1.

Table 3-1: Assigning security keys

Name	Descriptive Name	Description
BGPZAREA	BGP Area Report	This key unlocks the Area Office report options on the main BGPMENU. <b>Note:</b> This key should be assigned <i>only</i> at the Area Office level.
BGPZMENU	BGP Main Menu–CRS	This key unlocks the main CRS menu. It should be assigned to all users who need to run GPRA/CRS reports.

Name	Descriptive Name	Description
BGPZ PATIENT LISTS	BGP Patient Lists	This key allows the holder to obtain patient lists. The patient lists contain sensitive patient/clinical information. This key should be given <i>only</i> to those users who have a need for such information.
BGPZ SITE PARAMETERS	BGP Site Parameters	This key should be given to those with authority to update the site parameters.
BGPZ TAXONOMY EDIT	BGP Taxonomy Edit	This key should be given <i>only</i> to users who will need to update taxonomies.

## 3.1 Installation of the CRS GUI

There are two parts to the CRS GUI install: installation on the RPMS server and installation on the local (client) PC. See the steps below for installation instructions.

### 3.1.1 Installation on the RPMS Server

1. Make sure BMX v4.0 is installed in RPMS on the RPMS Server.
2. Make sure CRS v23.1 is installed in RPMS on the RPMS server. (See instructions above.)

**Note:** If a previous version of Visual CRS is being used you will not need to perform Steps 3 and 4. If this is the first time Visual CRS is being used, perform Steps 3 and 4.

3. Assign option **BGPGRPC** as a secondary menu option with a synonym of **BGPG** for each user.
4. Assign option **BMXRPC** as a secondary menu option with a synonym of **BMX** for each user.

### 3.1.2 Installation on Each User's (Client) PC

1. Place **bgp\_2310client.zip** into a directory of your choice and unzip the file. There are two files included in the zip file: **bgp\_2310.msi** and **bgp\_2310setup.exe**.
2. Double-click the **bgp\_2310setup.exe** file that was distributed with Visual CRS. If asked, accept the License Agreement, and follow the instructions for downloading and installing Microsoft .Net Framework v4.0. This will only occur if the most current version of Microsoft .Net Framework v4.0 is not on the local PC. This step takes approximately 20–30 minutes over a DSL connection.
3. Follow the prompts on the **Visual CRS Setup** screens and accept all the defaults.

4. Double-click the **Visual CRS** shortcut that displays on the desktop.
5. If this is the first install, a new connection must be added. Please refer to the *BMX 4.0 User Manual* for instructions.
6. When the **RPMS Login** window displays, enter the RPMS access, and verify codes and click **OK**.
7. If data for multiple facilities is stored on the same RPMS database, the **Select Division** window displays. Select a Division and click **OK**.
8. You are now running the Visual CRS software.



## 4.0 Sample Installations

### 4.1 Sample Installation of CRS on RPMS Server

```

CMBB>D ^XPDKRN

KIDS 8.0

Select KIDS OPTION: 1  LOAD A DISTRIBUTION
Enter a Host File: g:\pub\crs\23.1\bgp_2310.k

KIDS Distribution saved on May 16, 2023@11:06:49
Comment: IHS CLINICAL REPORTING V23.1

This Distribution contains Transport Globals for the following Package(s):
Build IHS CLINICAL REPORTING 23.1 has been loaded before, here is when:
      IHS CLINICAL REPORTING 23.1  Install Completed
                                   was loaded on Apr 03, 2023@14:58:10
      IHS CLINICAL REPORTING 23.1  Install Completed
                                   was loaded on Apr 04, 2023@10:53:35
OK to continue with Load? NO// y  YES

Distribution OK!

Want to Continue with Load? YES//
Loading Distribution...

Build IHS CLINICAL REPORTING 23.1 has an Environmental Check Routine
Want to RUN the Environment Check Routine? YES//
      IHS CLINICAL REPORTING 23.1
Will first run the Environment Check Routine, BGPPPOS

      Patch "XU*8.0*1018" is installed.
      Patch "DI*22.0*1018" is installed.
      Patch "ATX*5.1*48" is installed.
      CRS (BGP) Version 23.0 is installed.
Use INSTALL NAME: IHS CLINICAL REPORTING 23.1 to install this Distribution.

CMBB>d ^XPDKRN

KIDS 8.0

Select KIDS OPTION: INSTALL PACKAGE(S)
Select INSTALL NAME:      IHS CLINICAL REPORTING 23.1      Loaded from Distribution
5/16/23@11:26:17
=> IHS CLINICAL REPORTING V23.1 ;Created on May 16, 2023@11:06:49

This Distribution was loaded on May 16, 2023@11:26:17 with header of
      IHS CLINICAL REPORTING V23.1 ;Created on May 16, 2023@11:06:49
It consisted of the following Install(s):
IHS CLINICAL REPORTING 23.1
Checking Install for Package IHS CLINICAL REPORTING 23.1
Will first run the Environment Check Routine, BGPPPOS

```

Patch "XU\*8.0\*1018" is installed.  
Patch "DI\*22.0\*1018" is installed.  
Patch "ATX\*5.1\*48" is installed.  
CRS (BGP) Version 23.0 is installed.

Install Questions for IHS CLINICAL REPORTING 23.1

Incoming Files:

90241.01 BGP CONTROL FILE (including data)  
Note: You already have the 'BGP CONTROL FILE' File.  
I will REPLACE your data with mine.

90241.02 BGP SITE PARAMETERS  
Note: You already have the 'BGP SITE PARAMETERS' File.

90241.03 BGP SUMMARY CATEGORIES (including data)  
Note: You already have the 'BGP SUMMARY CATEGORIES' File.  
I will REPLACE your data with mine.

90241.04 BGP CLIENT AUTOMATED GPRA EXTRACT PARAMS  
Note: You already have the 'BGP CLIENT AUTOMATED GPRA EXTRACT PARAMS' File.

90245 BGP AREA AUTOMATED GPRA PARAMS  
Note: You already have the 'BGP AREA AUTOMATED GPRA PARAMS' File.

90245.1 BGP GPRA FLAT FILE DATA  
Note: You already have the 'BGP GPRA FLAT FILE DATA' File.

90567.01 BGP 23 MEASURES (including data)  
Note: You already have the 'BGP 23 MEASURES' File.  
I will REPLACE your data with mine.

90567.02 BGP 23 INDIVIDUAL MEASURES (including data)  
Note: You already have the 'BGP 23 INDIVIDUAL MEASURES' File.  
I will REPLACE your data with mine.

90567.03 BGP 23 DATA CURRENT  
Note: You already have the 'BGP 23 DATA CURRENT' File.

90567.04 BGP 23 DATA PREVIOUS  
Note: You already have the 'BGP 23 DATA PREVIOUS' File.

90567.05 BGP 23 DATA BASELINE  
Note: You already have the 'BGP 23 DATA BASELINE' File.

90567.06 BGP 23 NATIONAL PATIENT LISTS (including data)  
Note: You already have the 'BGP 23 NATIONAL PATIENT LISTS' File.  
I will REPLACE your data with mine.

90567.07 BGP 23 SNOMED SUBSETS (including data)  
Note: You already have the 'BGP 23 SNOMED SUBSETS' File.  
I will REPLACE your data with mine.

90567.08 BGP 23 TAXONOMIES USED (including data)  
Note: You already have the 'BGP 23 TAXONOMIES USED' File.  
I will REPLACE your data with mine.

90567.1 BGP 23 MEASURE GROUPS (including data)  
Note: You already have the 'BGP 23 MEASURE GROUPS' File.  
I will REPLACE your data with mine.

90567.17 BGP 23 ICARE GROUPS (including data)  
Note: You already have the 'BGP 23 ICARE GROUPS' File.  
I will REPLACE your data with mine.

90567.18 BGP 23 ICARE CATEGORIES (including data)  
Note: You already have the 'BGP 23 ICARE CATEGORIES' File.  
I will REPLACE your data with mine.

90567.19 BGP 23 GUI REPORT OUTPUT  
Note: You already have the 'BGP 23 GUI REPORT OUTPUT' File.

90567.21 BGP 23 SNOMED LISTS (including data)  
Note: You already have the 'BGP 23 SNOMED LISTS' File.  
I will REPLACE your data with mine.

90567.22 BGP 23 ELDER INDIVIDUAL MEASURES (including data)  
Note: You already have the 'BGP 23 ELDER INDIVIDUAL MEASURES' File.  
I will REPLACE your data with mine.

90567.23 BGP 23 ELDER DATA CURRENT  
Note: You already have the 'BGP 23 ELDER DATA CURRENT' File.

90567.24 BGP 23 ELDER DATA PREVIOUS  
Note: You already have the 'BGP 23 ELDER DATA PREVIOUS' File.

90567.25 BGP 23 ELDER DATA BASELINE  
Note: You already have the 'BGP 23 ELDER DATA BASELINE' File.

90567.26 BGP 23 ELDER MEASURES (including data)  
Note: You already have the 'BGP 23 ELDER MEASURES' File.  
I will REPLACE your data with mine.



```

Updating [BGP HEDIS ACEI NDC] taxonomy...
Updating [BGP HEDIS ARB NDC] taxonomy...
Updating [BGP PQA BETA BLOCKER NDC] taxonomy...
Updating [BGP PQA ARB NEPRILYSIN NDC] taxonomy...
Updating [BGP PQA CCB NDC] taxonomy...
Updating [BGP PQA BIGUANIDE NDC] taxonomy...
Updating [BGP PQA SULFONYLUREA NDC] taxonomy...
Updating [BGP PQA THIAZOLIDINEDIONE NDC] taxonomy...
Updating [BGP PQA DPP IV NDC] taxonomy...
Updating [BGP PQA DIABETES ALL CLASS NDC] taxonomy...
Updating [BGP PQA STATIN NDC] taxonomy...
Updating [BGP PQA ANTIRETROVIRAL NDC] taxonomy...
Updating [BGP PQA NON-WARF ANTICOAG NDC] taxonomy...
Updating [BGP PQA WARFARIN NDC] taxonomy...
Updating [BGP PQA NEBULIZED BRONCHO NDC] taxonomy...
Updating [BGP PQA LA INHALED BRONCHO NDC] taxonomy...
Updating [BGP PQA NON-INFUSED MS NDC] taxonomy...
Updating [BGP PQA INFUSED MS NDC] taxonomy...
Updating [BGP PQA ASTHMA INHALE STER NDC] taxonomy...
Updating [BGP PQA COPD NDC] taxonomy...
Updating [BGP PQA BENZODIAZ OP NDC] taxonomy...
Updating [BGP HEDIS ASTHMA NDC] taxonomy...
Updating [BGP HEDIS ASTHMA LEUK NDC] taxonomy...
Updating [BGP HEDIS ASTHMA INHALED NDC] taxonomy...
Updating [BGP HEDIS CONTRACEPTION NDC] taxonomy...
Updating [BGP HEDIS ISOTRETINOIN NDC] taxonomy...
Updating [BGP HEDIS ANTITHROMBOTIC NDC] taxonomy...
Updating [BGP HEDIS ANTI-INFECTIVE NDC] taxonomy...
Updating [BGP HEDIS CARDIOVASCULAR NDC] taxonomy...
Updating [BGP HEDIS CENTRAL NERVOUS NDC] taxonomy...
Updating [BGP HEDIS NONBENZODIAZ NDC] taxonomy...
Updating [BGP HEDIS ENDOCRINE NDC] taxonomy...
Updating [BGP HEDIS PAIN NDC] taxonomy...
Updating [BGP HEDIS SKL MUSCLE RELAX NDC] taxonomy...
Updating [BGP HPV LOINC CODES] taxonomy...
Updating [BGP PQA RASA NDC] taxonomy...
Updating [BGP PQA OPIOID NDC] taxonomy...
Updating [BGP HEDIS ANTIDEPRESSANT NDC] taxonomy...
Updating [BGP HEDIS ANTICHOLINERGIC NDC] taxonomy...
BGP CMS ACEI MEDS CLASS
Creating BGP CMS ACEI MEDS Taxonomy...
BGP CMS BETA BLOCKER CLASS BGP CMS BETA BLOCKER NDC
Creating BGP CMS BETA BLOCKER MEDS Taxonomy...
BGP CMS ANTIBIOTICS MEDS CLASS
Creating BGP CMS ANTIBIOTIC MEDS Taxonomy...
BGP CMS ARB MEDS CLASS
Creating BGP CMS ARB MEDS Taxonomy...

Creating DM AUDIT ASPIRIN DRUGS Taxonomy...
BGP CMS ANTI-PLATELET CLASS
Creating BGP ANTI-PLATELET DRUGS Taxonomy...
  BGP HEDIS OSTEOPOROSIS NDC
Creating BGP HEDIS OSTEOPOROSIS DRUGS Taxonomy...
  BGP ASTHMA CONTROLLER NDC
Creating BGP ASTHMA CONTROLLERS Taxonomy...
  BGP ASTHMA INHALED STEROID VAP
Creating BGP ASTHMA INHALED STEROIDS Taxonomy...
  BGP ASTHMA LEUKOTRIENE NDC
Creating BGP ASTHMA LEUKOTRIENE Taxonomy...

```

```

BGP HEDIS ANTIDEPRESSANT NDC
Creating BGP HEDIS ANTIDEPRESSANT MEDS Taxonomy...
  BGP RA OA NSAID VAPI
Creating BGP RA OA NSAID MEDS Taxonomy...
BGP RA GLUCOCORTICOIDS CLASS BGP RA GLUCOCORTICOIDS VAPI
Creating BGP RA GLUCOCORTICOIDS MEDS Taxonomy...
  BGP HEDIS ANTIBIOTICS NDC
Creating BGP HEDIS ANTIBIOTICS MEDS Taxonomy...
  BGP HEDIS ASTHMA LEUK NDC
Creating BGP HEDIS ASTHMA LEUK MEDS Taxonomy...
  BGP HEDIS ASTHMA NDC
Creating BGP HEDIS ASTHMA MEDS Taxonomy...
  BGP HEDIS PRIMARY ASTHMA NDC
Creating BGP HEDIS PRIMARY ASTHMA MEDS Taxonomy...
  BGP HEDIS ASTHMA INHALED NDC
Creating BGP HEDIS ASTHMA INHALED MEDS Taxonomy...
  BGP HEDIS BETA BLOCKER NDC
Creating BGP HEDIS BETA BLOCKER MEDS Taxonomy...
  BGP RA IM GOLD NDC
Creating BGP RA IM GOLD MEDS Taxonomy...
  BGP RA AZATHIOPRINE VAPI
Creating BGP RA AZATHIOPRINE MEDS Taxonomy...
  BGP RA LEFLUNOMIDE VAPI
Creating BGP RA LEFLUNOMIDE MEDS Taxonomy...
  BGP RA ORAL GOLD VAPI
Creating BGP RA ORAL GOLD MEDS Taxonomy...
  BGP RA CYCLOSPORINE NDC
Creating BGP RA CYCLOSPORINE MEDS Taxonomy...
  BGP RA METHOTREXATE VAPI
Creating BGP RA METHOTREXATE MEDS Taxonomy...
  BGP RA MYCOPHENOLATE VAPI
Creating BGP RA MYCOPHENOLATE MEDS Taxonomy...
  BGP RA PENICILLAMINE VAPI
Creating BGP RA PENICILLAMINE MEDS Taxonomy...
  BGP RA SULFASALAZINE VAPI
Creating BGP RA SULFASALAZINE MEDS Taxonomy...
BGP THROMBOLYTIC AGENT CLASS
Creating BGP CMS THROMBOLYTIC MEDS Taxonomy...
  BGP HEDIS ANTICHOLINERGIC NDC
Creating BGP HEDIS ANTICHOLINERGIC MEDS Taxonomy...
  BGP HEDIS ANTITHROMBOTIC NDC
Creating BGP HEDIS ANTITHROMBOTIC MEDS Taxonomy...
  BGP HEDIS ANTI-INFECTIVE NDC
Creating BGP HEDIS ANTI-INFECTIVE MEDS Taxonomy...
  BGP HEDIS CARDIOVASCULAR NDC
Creating BGP HEDIS CARDIOVASCULAR MEDS Taxonomy...
  BGP HEDIS CENTRAL NERVOUS NDC
Creating BGP HEDIS CENTRAL NERVOUS MEDS Taxonomy...
  BGP HEDIS NONBENZODIAZ NDC
Creating BGP HEDIS NONBENZODIAZ MEDS Taxonomy...
  BGP HEDIS ENDOCRINE NDC
Creating BGP HEDIS ENDOCRINE MEDS Taxonomy...
  BGP HEDIS GASTROINTESTINAL NDC
Creating BGP HEDIS GASTROINTESTINAL MED Taxonomy...
  BGP HEDIS PAIN NDC
Creating BGP HEDIS PAIN MEDS Taxonomy...
  BGP HEDIS SKL MUSCLE RELAX NDC
Creating BGP HEDIS SKL MUSCLE RELAX MED Taxonomy...
  BGP HEDIS ACEI NDC

```

```
Creating BGP HEDIS ACEI MEDS Taxonomy...
  BGP HEDIS ARB NDC
Creating BGP HEDIS ARB MEDS Taxonomy...
  BGP HEDIS STATIN NDC
Creating BGP HEDIS STATIN MEDS Taxonomy...
  BGP CMS WARFARIN VAPI
Creating BGP CMS WARFARIN MEDS Taxonomy...
  BGP HEDIS ISOTRETINOIN NDC
Creating BGP HEDIS ISOTRETINOIN MEDS Taxonomy...
  BGP HEDIS CONTRACEPTION NDC
Creating BGP HEDIS CONTRACEPTION MEDS Taxonomy...
  BGP PQA OPIOID NDC
Creating BGP PQA OPIOID MEDS Taxonomy...
  BGP PQA BENZODIAZ OP NDC
Creating BGP PQA BENZODIAZ OP MEDS Taxonomy...
  BGP PQA BETA BLOCKER NDC
Creating BGP PQA BETA BLOCKER MEDS Taxonomy...
  BGP PQA RASA NDC
Creating BGP PQA RASA MEDS Taxonomy...
  BGP PQA CCB NDC
Creating BGP PQA CCB MEDS Taxonomy...
  BGP PQA BIGUANIDE NDC
Creating BGP PQA BIGUANIDE MEDS Taxonomy...
  BGP PQA SULFONYLUREA NDC
Creating BGP PQA SULFONYLUREA MEDS Taxonomy...
  BGP PQA THIAZOLIDINEDIONE NDC
Creating BGP PQA THIAZOLIDINEDIONE MEDS Taxonomy...
  BGP PQA STATIN NDC
Creating BGP PQA STATIN MEDS Taxonomy...
  BGP PQA ANTIRETROVIRAL NDC
Creating BGP PQA ANTIRETROVIRAL MEDS Taxonomy...
  BGP PQA SABA NDC
Creating BGP PQA SABA MEDS Taxonomy...
  BGP PQA CONTROLLER NDC
Creating BGP PQA CONTROLLER MEDS Taxonomy...
  BGP ASTHMA LABA NDC
Creating BGP ASTHMA LABA MEDS Taxonomy...
  BGP PQA DPP IV NDC
Creating BGP PQA DPP IV MEDS Taxonomy...
  BGP PQA DIABETES ALL CLASS NDC
Creating BGP PQA DIABETES ALL CLASS Taxonomy...
  BGP PQA NON-WARF ANTICOAG NDC
Creating BGP PQA NON-WARF ANTICOAG MEDS Taxonomy...
  BGP PQA WARFARIN NDC
Creating BGP PQA WARFARIN MEDS Taxonomy...
  BGP PQA COPD NDC
Creating BGP PQA COPD MEDS Taxonomy...
  BGP PQA ASTHMA INHALE STER NDC
Creating BGP PQA ASTHMA INHALE STER MED Taxonomy...
  BGP PQA BENZODIAZ NDC
Creating BGP PQA BENZODIAZ MEDS Taxonomy...
  BGP PQA ARB NEPRILYSIN NDC
Creating BGP PQA ARB NEPRILYSIN MEDS Taxonomy...
  BGP PQA LA INHALED BRONCHO NDC
Creating BGP PQA LA INHALED BRONCHO MED Taxonomy...
  BGP PQA NEBULIZED BRONCHO NDC
Creating BGP PQA NEBULIZED BRONCHO MEDS Taxonomy...
  BGP PQA NON-INFUSED MS NDC
Creating BGP PQA NON-INFUSED MS MEDS Taxonomy...
```

```
BGP PQA INFUSED MS NDC
Creating BGP PQA INFUSED MS MEDS Taxonomy...
BGP HEDIS ANTIDEPRESSANT NDC
Creating BGP HEDIS ANTIDEPRESSANT MEDS Taxonomy...
BGP CMS SMOKING CESSATION VAPI
Creating BGP CMS SMOKING CESSATION MEDS Taxonomy...

Creating BGP CMS SYSTEMIC CHEMO MEDS Taxonomy...

Creating BGP CMS IMMUNOSUPPRESSIVE MEDS Taxonomy...
BGP IPC DEPRESSION RXNORM
Creating BGP IPC DEPRESSION MEDS Taxonomy...
BGP IPC ABOVE NORMAL RXNORM
Creating BGP IPC ABOVE NORMAL MEDS Taxonomy...
BGP IPC BELOW NORMAL RXNORM
Creating BGP IPC BELOW NORMAL MEDS Taxonomy...
BGP ECQM DEMENTIA RXNORM
Creating BGP ECQM DEMENTIA MEDS Taxonomy...
Creating/Updating SSC ADA Codes Taxonomy...

Updating Routine file...

Updating KIDS files...

IHS CLINICAL REPORTING 23.1 Installed.
    May 16, 2023@11:28:18

Not a VA primary domain

Install Completed
```

Figure 4-1: Sample installation for IHS Clinical Reporting package 23.1

## 4.2 Sample Installation of the CRS GUI

1. Double-click **bgp\_2310setup.exe** to launch the **Indian Health Service CRS Setup Wizard**.
2. The **Indian Health Service CRS Setup Wizard** dialog displays (Figure 4-2).



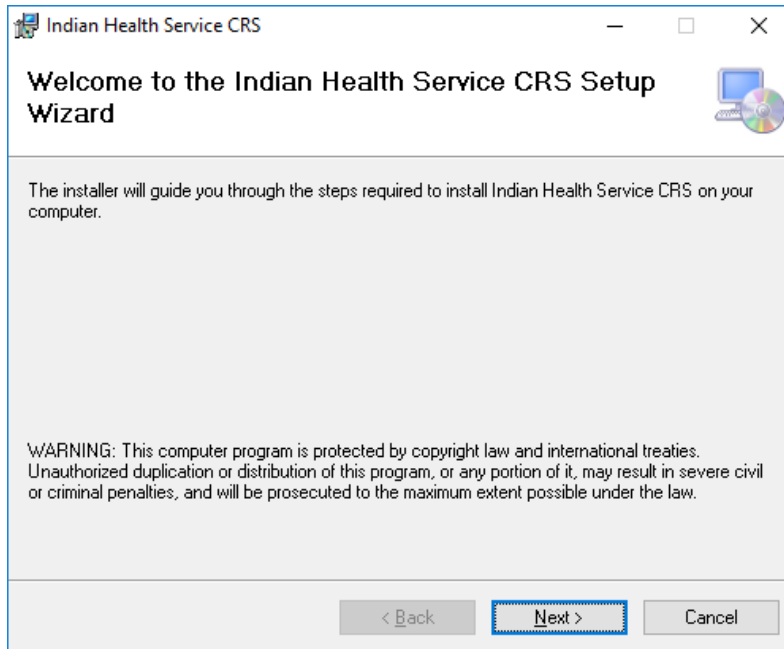


Figure 4-2: Indian Health Service CRS Setup Wizard, Welcome dialog

3. Click **Next** on the Setup Wizard dialog to display the **Select Installation Folder** dialog. See Figure 4-3.

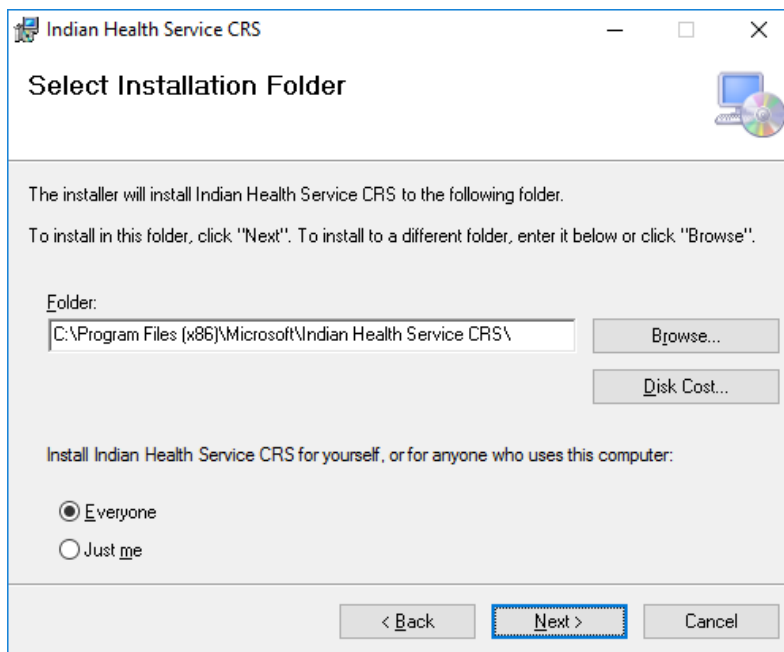


Figure 4-3: Indian Health Service CRS Setup Wizard, Select Installation Folder dialog

- Click **Next** to display the **Confirm Installation** dialog. See Figure 4-4.

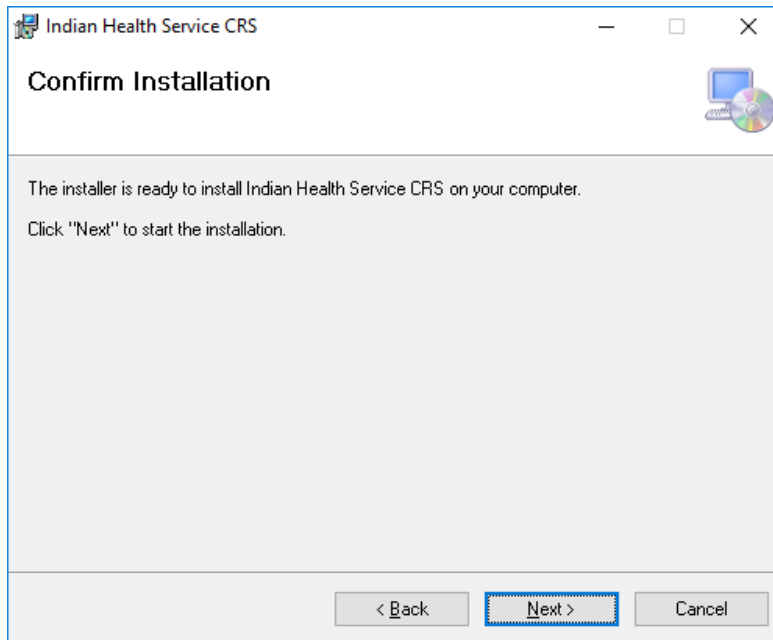


Figure 4-4: Indian Health Service CRS Setup Wizard, Confirm Installation dialog

- Click **Next** to display the **Installing Indian Health Service CRS** dialog. See Figure 4-5.

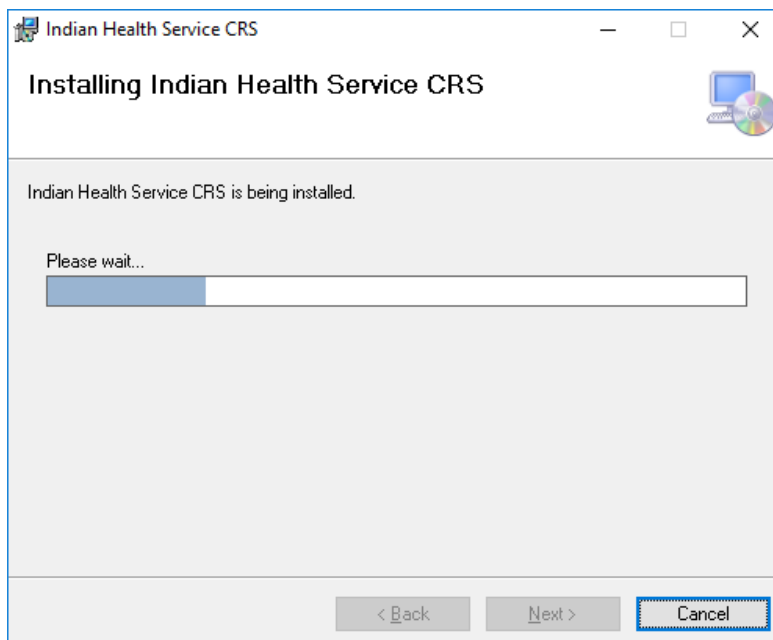


Figure 4-5: Indian Health Service CRS Setup Wizard, Installing Visual CRS dialog

6. Wait while the application installs. When the installation is complete, the **Installation Complete** dialog displays. See Figure 4-6.

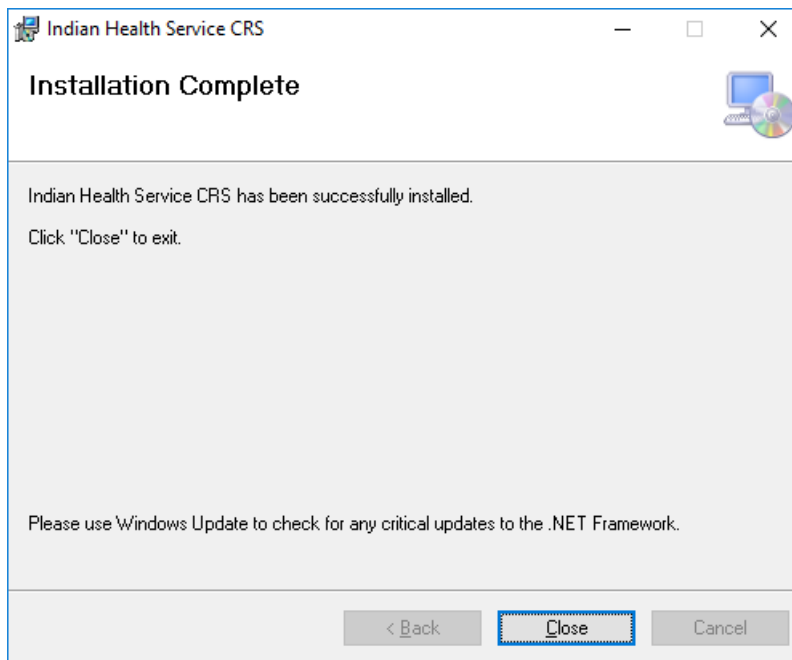


Figure 4-6: Indian Health Service CRS Setup Wizard, Installation Complete dialog

7. Click **Close**.

A desktop shortcut named **CRS 23.1** should now be available. Refer to the user manual for instructions on use of the Visual CRS application.

## 5.0 Installation Configuration

The requirements for successful installation are listed in Sections 2.2.1 (KIDS build) and 2.3.2 (GUI install). There are no other reference materials other than this installation manual.

## Acronym List

Acronym	Definition
BNI	Brief Negotiated Interview
CPT	Current Procedural Terminology
CRS	Clinical Reporting System
eCQM	Electronic Clinical Quality Measures
ENDS	Electronic Nicotine Delivery Systems
FY	Fiscal Year
GPRA	Government Performance and Results Act
GPRAMA	GPRA Modernization Act
GUI	Graphical User Interface
HEDIS	Healthcare Effectiveness Data and Information Set
ICD	International Classification of Diseases
IHS	Indian Health Service
IPC	Improving Patient Care
KIDS	Kernel Installation and Distribution System
LDL	Low-Density Lipoprotein
PPN	Patient Preferred Name
RPMS	Resource and Patient Management System
SBIRT	Screening, Brief Intervention, and Referral to Treatment
SNOMED	Systematized Nomenclature of Medicine
SUD	Substance Use Disorder
UCI	Unique Client Identifier

## Contact Information

If you have any questions or comments regarding this distribution, please contact the IHS IT Service Desk.

**Phone:** (888) 830-7280 (toll free)

**Web:** <https://www.ihs.gov/itsupport/>

**E-mail:** [itsupport@ihs.gov](mailto:itsupport@ihs.gov)