



# Training

## The Resource and Patient Management System

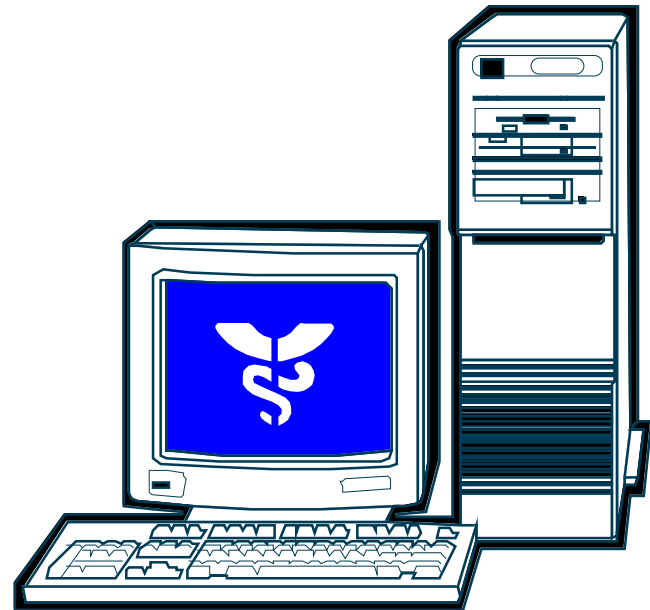
RPMS Briefing

The Indian Health Service  
Office of Information Technology



# RPMS is...

- A set of integrated computer applications designed to support the clinical and administrative functions of a health care program.



# Purpose of RPMS

- RPMS is designed for decentralized, integrated health care delivery programs which emphasize:
  - Community Based Comprehensive Care
  - Preventive Health Services

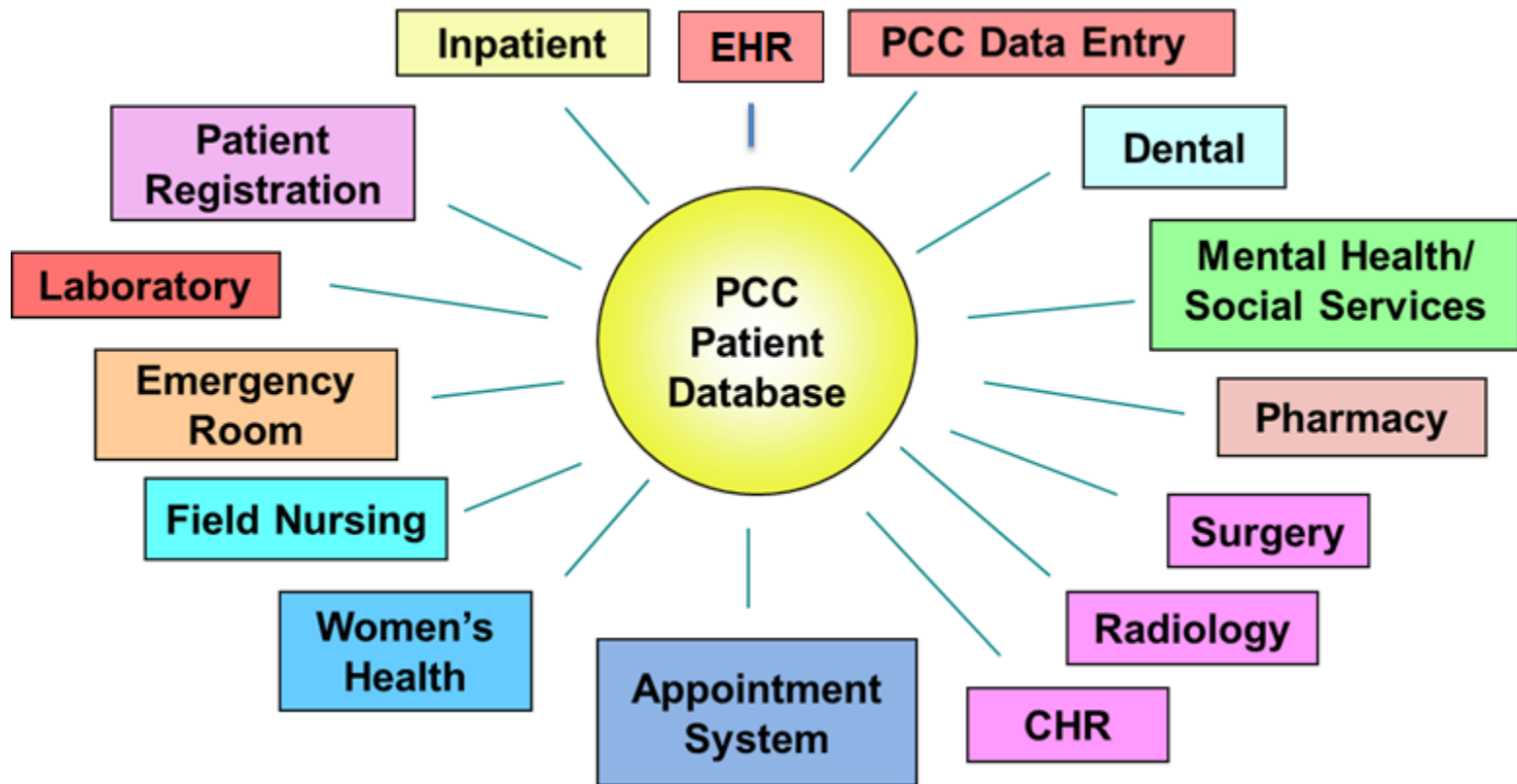
# RPMS Administrative Applications

- Patient Registration
- Referred Care Systems
- Third Party Billing
- Accounts Receivable
- DRG Grouping
- Supply Management
- Equipment Inventory
- Admin. Resources Management

# RPMS Clinical and Field Health Applications

- Patient Care Component
- Pharmacy
- Dental Data System
- Clinical Laboratory System
- Blood Bank
- Immunization Tracking
- Women's Health
- Emergency Room
- Clinic Scheduling
- Mental Health/Social Services
- Nursing Patient Acuity
- Nutrition and Dietetics
- Radiology
- Diabetes Management
- Chemical Dependency
- Community Health Work Module
- Admission/Discharge/Transfer

# RPMS Integrates Multiple Clinical Systems



# RPMS Produces:

- A list of patients needing an annual flu shot
- A count of active users at your facility
- The top ten health problems in your community
- Third party claims for billable visits
- Workload statistics by age, sex, community, payor
- A health profile for individual patients
- A profile of community health status

# RPMS Produces (cont.):

- Reminder letters for women needing pap smears
- Immunization status data for your patients
- A list of diabetic patients who need an eye or dental examination
- List of patients with special needs
- Lists of patients with Medicare, Medicaid, Private Insurance, or HMO Health Plans
- Lists of patients re-admitted within 30 days of a previous discharge

# RPMS Includes:

- Graphical User Interface
- Point of Service Entry of Data
- Provider Data Entry
- Use of Portable Devices
- Internet Access