

THE INDIAN HEALTH SERVICE

# VA Health Summaries



Superior Health Information Management  
Now and for the Future

# Learning Objectives

- Compare and Contrast VA Health Summary vs IHS Health Summary
- Review the Ad Hoc Health Summary Component
- Create a new VA Health Summary Report
- Review NEW reports available through VA HS Reports



# Health Summary Overview (cont.)

- RPMS Menu:
  - EHR > BEH > RPT > HSM:

## Health Summary Configuration

ALL	List All Health Summaries
IHS	IHS Health Summary Configuration...
VHA	VHAA Health Summary Configuration...

# Health Summary Overview ...Summaries

## IHS Health Summary

DEMO HOSPITAL      RPMS-EHR Management      Version 1.1

### IHS Health Summary Configuration

DF    Delete Health Summary Flowsheet  
DI    Delete Health Summary Flowsheet Item  
DM    Delete Measurement Panel Definition  
DS    Delete Health Summary Type  
FMMT    Create/Modify Health Summary Type using Fileman  
HM    Health Maintenance Reminders ...  
HS    Generate Health Summary  
HSSP    Update Health Summary Site Parameters  
IS    Inquire About a Health Summary Type  
LC    List Health Summary Components  
LF    List Health Summary Flowsheets  
LI    List Health Summary Flowsheet Items  
LM    List Measurement Panel Types  
LS    List Health Summary Types  
MF    Create/Modify Flowsheet  
MI    Create/Modify Flowsheet Item  
MM    Create/Modify Measurement Panel  
MS    Create/Modify Health Summary Type  
PP    Print Health Maintenance Item Protocols  
PWH    Print Patient Wellness Handout  
    \*\*> Out of order: Use APCH PWH GENERATE PWH option  
TYP    IHS Health Summary Types

## VA Health Summary

DEMO HOSPITAL      RPMS-EHR Management  
Version 1.1

### VHA Health Summary Configuration

BAT    List Batch Health Summary Locations  
BLD    Build Health Summary Type Menu ...  
DEF    Display/Edit Health Summary Site Defaults ...  
LOC    Setup Batch Print Locations  
MNT    Health Summary Maintenance Menu ...  
PRN    Print Health Summary Menu ...  
TYP    VHA Health Summary Types Menu ...

# Health Summary Overview ...Summaries (cont.)

## IHS Health Summary

## VA Health Summary

```

TEST DEHR
File Edit Options Send Receive Window Help
[Icons]
Create/Modify Summary Type Jan 24, 2011 09:40:24 Page: 1 of 8
Health Summary: ADULT REGULAR

STRUCTURE:
Order Component Max occ Time Alternate Title
5 DEMOGRAPHIC DATA
10 INSURANCE INFORMATION
14 ALLERGIES/ADVERSE REACTIONS (BRIEF)
15 ALLERGIES (FROM PROBLEM LIST)
20 MEASUREMENT PANELS (OUTPATIENT) 5 2Y
25 EYE CARE
30 REPRODUCTIVE HISTORY
35 PROBLEMS - ACTIVE
40 PROBLEMS - INACTIVE
45 HISTORY OF SURGERY
50 HEALTH FACTORS
55 MEDS - CURRENT 1Y CURRENT MEDICATIONS

+ Enter ?? for more actions
MS Modify Structure FS Flow Sheets GI General Info
MP Mod Meas Panel HF Health Factors HS Sample Health Summary
LP Lab Panel PC Provider Class Scrn Q Quit
HM Health Main Remind CS Clinic Screen
BP Best Practice PromptsSP Supplements
Select Action: +//
VT100 TCP/IP 09:40
  
```

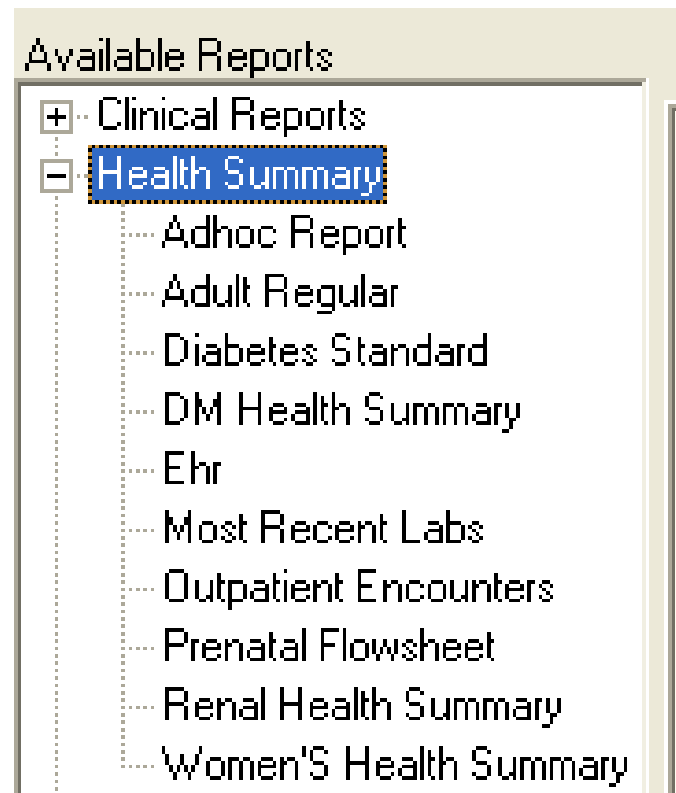
```

TEST DEHR
File Edit Options Send Receive Window Help
[Icons]
Type Name: WOMEN'S HEALTH BRIEF
Title:
Owner: USER,ZZSTUDENT
SUPPRESS PRINT OF COMPONENTS WITHOUT DATA: no

Abb Ord Component Name Max Occ Time Loc Text Pro CPT
-----
DEM 5 Demographics
PLL 10 All Problems long yes
WHB 15 Women's Health Brief

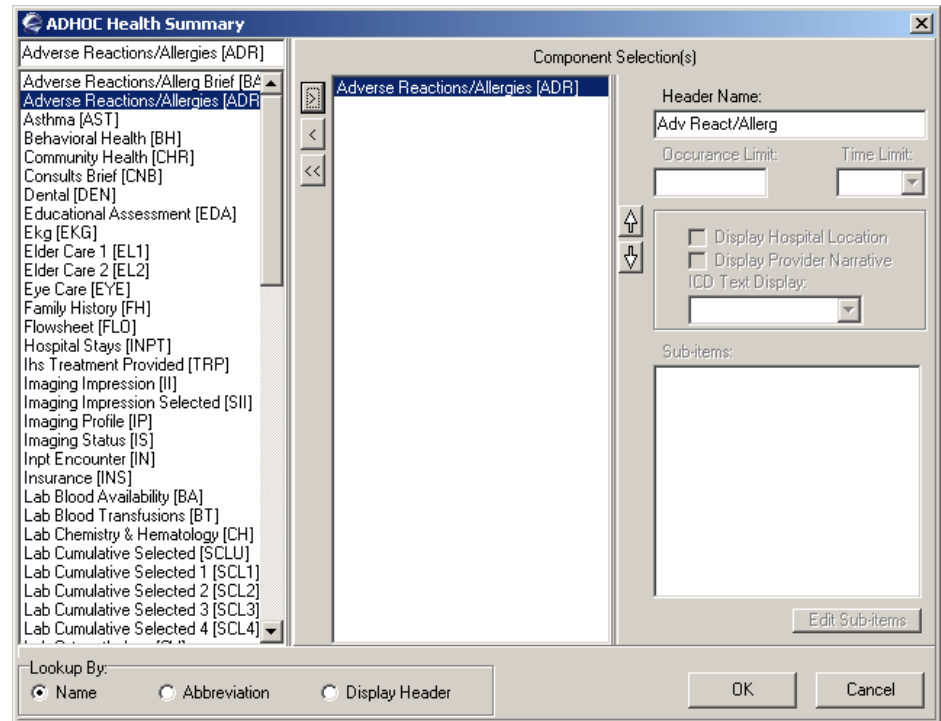
* = Disabled Components
Select COMPONENT:
VT100 TCP/IP 09:43
  
```

# Ad Hoc Report (1)



# Ad Hoc Report (2)

- Create an HS “on the fly”
  - Quick method of looking up information not normally found in the standard HS
  - Report specific to that patient & will reset when user leaves patient



# Ad Hoc Report (3)

RPMS EHR Menu:

EHR>BEH>RPT>HSM>VAH>TYP>TYP

## Health Summary Configuration

ALL List All Health Summaries..  
IHS IHS Health Summary Configuration ..  
**VHA VHA Health Summary Configuration ...**

## VHA Health Summary Configuration

BAT List Batch Health Summary Locations  
BLD Build Health Summary Type Menu ...  
DEF Display/Edit Health Summary Site Defaults ...  
LOC Setup Batch Print Locations  
MNT Health Summary Maintenance Menu ...  
PRN Print Health Summary Menu ...  
**TYP VHA Health Summary Types Menu ...**

## VHA Health Summary Types Menu

DEF Display VHA Health Summary Type Defaults  
MRG Merge Method for VHA Health Summary Types  
PRE Precedence of VHA Health Summary Types  
**TYP VHA Health Summary Types**

# Ad Hoc Report (4)

## VHA Health Summary Types

Allowable Health Summary Types may be set for the following:

2	User	USR	[choose from NEW PERSON]
4	<b>System</b>	<b>SYS</b>	<b>[DEMO-HO.IHS.GOV]</b>

Enter selection: 4 System DEMO-HO.IHS.GOV

---- Setting Allowable Health Summary Types for System: DEMO-HO.IHS.GOV ----Select Sequence: ?

Sequence Value

-----

5	<b>GMTS HS ADHOC OPTION</b>
10	PEDS MEASUREMENT PANEL
15	HEALTH FACTORS LAST 1Y
20	HEALTH MAINTENANCE REMINDER

# Creating a VA Health Summary

**NAME:** Woman's Health Report Replace

**TITLE:**

**SUPPRESS PRINT OF COMPONENTS WITHOUT DATA:** no//

**Do you wish to copy COMPONENTS from an existing Health Summary type?** YES// NO

**Select COMPONENT:** WOM

- |   |                       |     |
|---|-----------------------|-----|
| 1 | WOMEN'S HEALTH BRIEF  | WHB |
| 2 | WOMEN'S HEALTH DETAIL | WHD |

**CHOOSE 1-2:** 1 WOMEN'S HEALTH BRIEF WHB

**SUMMARY ORDER:** 5// 5

**HEADER NAME:** Women's Health Brief Replace

**Select COMPONENT:**

**Do you wish to review the Summary Type structure before continuing?** NO//

Please hold on while I resequence the summary order.

# Creating VA Health Summary Cont...

**NAME:** Woman's Health Report Replace

**TITLE:**

**SUPPRESS PRINT OF COMPONENTS WITHOUT DATA:** no//

**Do you wish to copy COMPONENTS from an existing Health Summary type?** YES// NO

**Select COMPONENT:** WOM

- |   |                       |     |
|---|-----------------------|-----|
| 1 | WOMEN'S HEALTH BRIEF  | WHB |
| 2 | WOMEN'S HEALTH DETAIL | WHD |

**CHOOSE 1-2:** 1 WOMEN'S HEALTH BRIEF WHB

**SUMMARY ORDER:** 5// 5

**HEADER NAME:** Women's Health Brief Replace

**Select COMPONENT:**

**Do you wish to review the Summary Type structure before continuing?** NO//

Please hold on while I resequence the summary order.

# Add NEW VA HS Women's Health Brief to EHR Reports Tab

- RPMS EHR Menu:
  - EHR>BEH>RPT>HSM>VAH>TYP>TYP

Health Summary Configuration	
ALL	List All Health Summaries..
IHS	IHS Health Summary Configuration ..
<b>VHA</b>	<b>VHA Health Summary Configuration ...</b>
VHA Health Summary Configuration	
BAT	List Batch Health Summary Locations
BLD	Build Health Summary Type Menu ...
DEF	Display/Edit Health Summary Site Defaults ...
LOC	Setup Batch Print Locations
MNT	Health Summary Maintenance Menu ...
PRN	Print Health Summary Menu ...
<b>TYP</b>	<b>VHA Health Summary Types Menu ...</b>
VHA Health Summary Types Menu	
DEF	Display VHA Health Summary Type Defaults
MRG	Merge Method for VHA Health Summary Types
PRE	Precedence of VHA Health Summary Types
<b>TYP</b>	<b>VHA Health Summary Types</b>

# Add NEW VA HS Women's Health Brief to EHR Reports Tab (cont.)

## VHA Health Summary Types

Allowable Health Summary Types may be set for the following:

2	User	USR	[choose from NEW PERSON]
4	<b>System</b>	<b>SYS</b>	<b>[DEMO-HO.IHS.GOV]</b>

Enter selection: 4 System DEMO-HO.IHS.GOV

---- Setting Allowable Health Summary Types for System: DEMO-HO.IHS.GOV ----Select Sequence: ?

Sequence Value

-----	-----
5	GMTS HS ADHOC OPTION
10	PEDS MEASUREMENT PANEL
15	HEALTH FACTORS LAST 1Y
20	HEALTH MAINTENANCE REMINDER
25	<b>WOMEN'S HEALTH BRIEF</b>

# New Reports Available through VA Health Summary

- Patient Wellness Handouts
- Asthma Supplements
- Women's Health Summary
- Many others.....

Questions?