

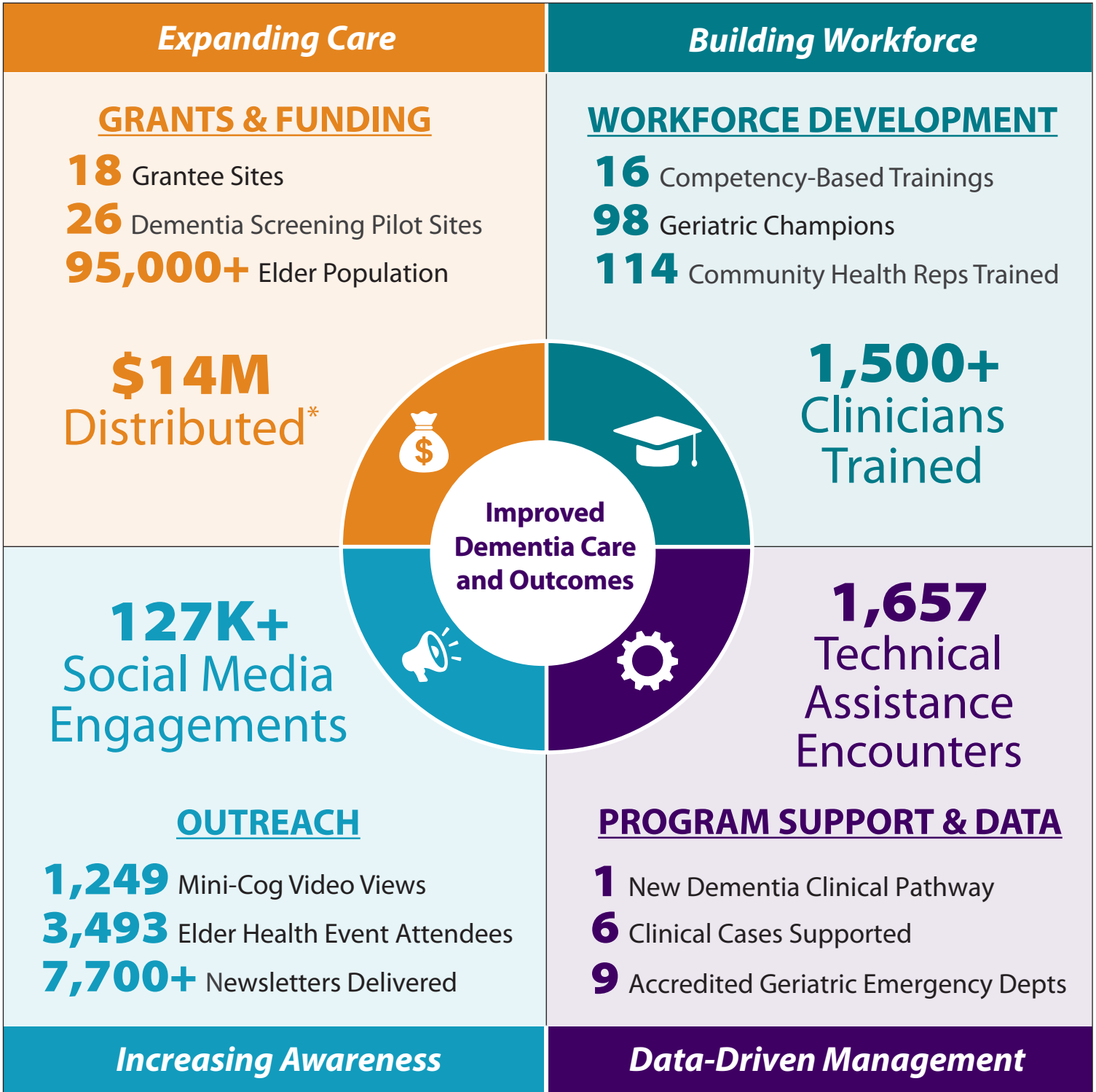


# IMPACT OF ELDER HEALTH AND ALZHEIMER'S PROGRAM

American Indian and Alaska Native elders experience high dementia rates yet face significant disparities in early detection and culturally responsive care. In 2021, IHS received first-time funding to improve dementia care and services.



**A tribally driven, coordinated approach**



\*2022-2028 grant obligations and 2022-2025 program distribution