

BCMA Site Parameter GUI Configuration

Figure 1 through Figure 7 illustrate the Site Parameter settings required for the BCMA GUI Configuration.

The screenshot shows the 'BCMA Site Parameters' dialog box with the 'Parameters' tab selected. The window title is 'BCMA Site Parameters' and it has a menu bar with 'File' and 'Help'. The tabs are 'Facility', 'Parameters', 'Default Answer Lists', 'IV Parameters', and 'JHS'. The 'Parameters' tab is active and contains the following sections:

- Output Devices:** Missing Dose Request Printer: TALRXIP
- Administration:**
 - Require E-Sig to Administer Medication
 - Allow Multiple Admins for On-Call
- Mail Groups:**
 - Due List Error: BCMA ISSUES
 - Missing Dose Notification: BCMA ISSUES
 - Unknown Actions: BCMA ISSUES
 - Unable To Scan: BCMA ISSUES
- Reports:**
 - Include Comments
 - Med Hist Days Back: 30
- Bar Code Options:**
 - Default Bar Code Format: 128
 - Default Bar Code Prefix: [Empty]
 - Using Robot RX
- 5 Rights Override:**
 - Unit Dose Administration
 - IV Administration
- Allowable Time Limits (In Minutes):**
 - Before Scheduled Admin Time: 60
 - After Scheduled Admin Time: 60
 - PRN Effectiveness Entry: 60
- Virtual Due List Default Times:**
 - Start Time: 1 hour prior
 - Stop Time: 1 hour after
- Include Schedule Types:**
 - PRN
 - On-Call
 - Continuous
 - One-Time
- Misc Options:**
 - Max Client Server Clock Variance: 5
 - Patient Transfer Notification Timeframe [In Hours]: 72
 - BCMA Idle Timeout [In Minutes]: 15
 - PRN Documentation [In Hours]: 72
 - Max Date Range: 7
 - Patch Display Duration: Always Display
 - Enable CPRS Med Order Button

Figure 1: BCMA Site Parameters dialog, Parameters tab

BCMA Site Parameter GUI Configuration

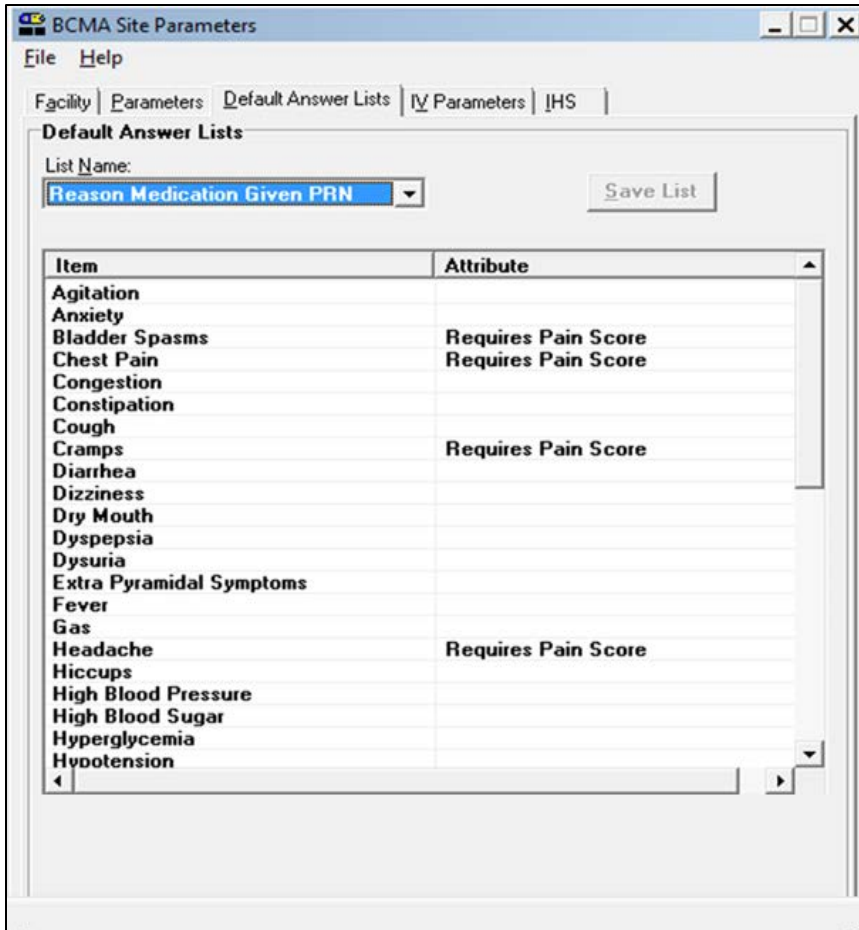


Figure 2: BCMA Site Parameters dialog, Default Answer Lists tab, Reason Medication Given PRN list

BCMA Site Parameter GUI Configuration

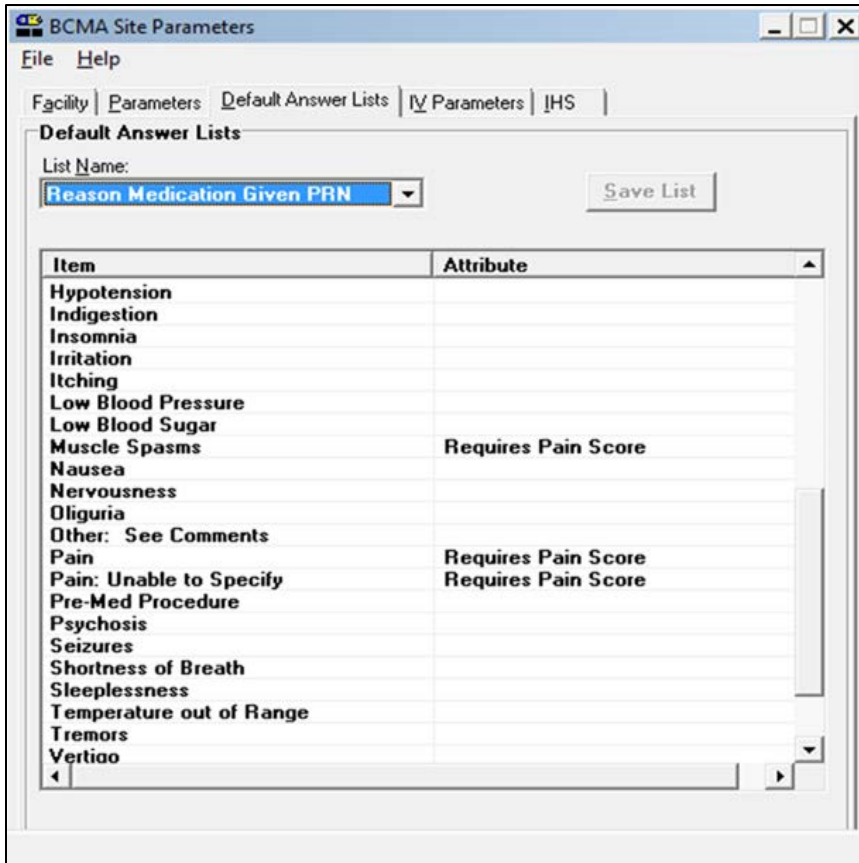


Figure 3: BCMA Site Parameters dialog, Default Answer Lists tab, Reason Medication Given PRN list (cont.)

BCMA Site Parameter GUI Configuration

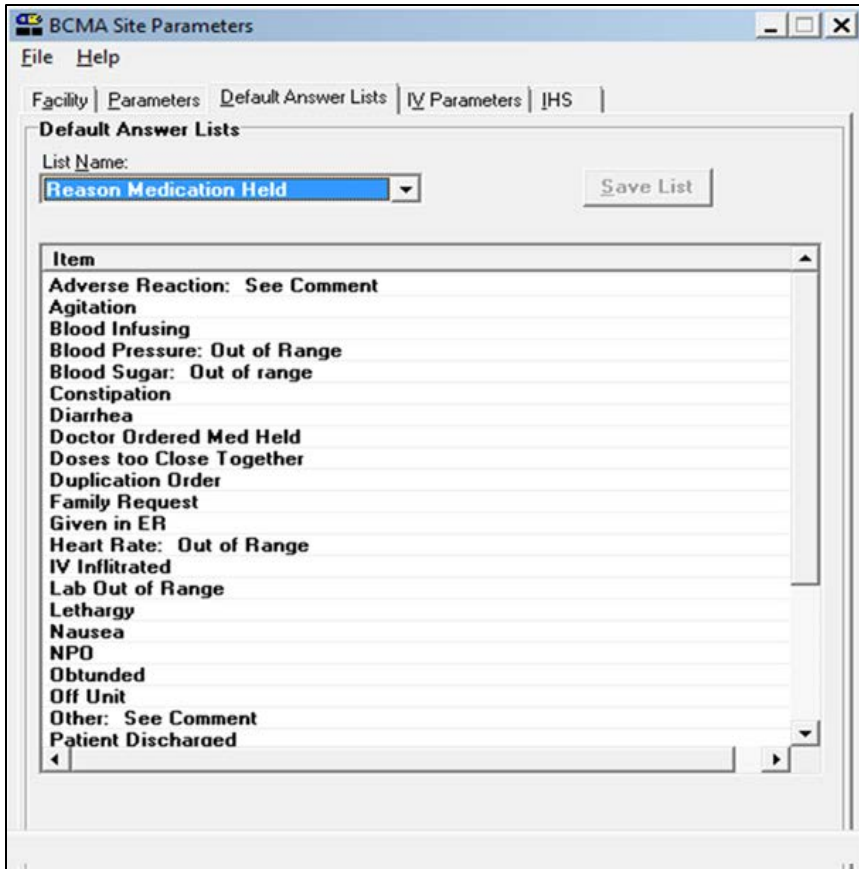


Figure 4: BCMA Site Parameters dialog, Default Answer Lists tab, Reason Medication Held list

BCMA Site Parameter GUI Configuration

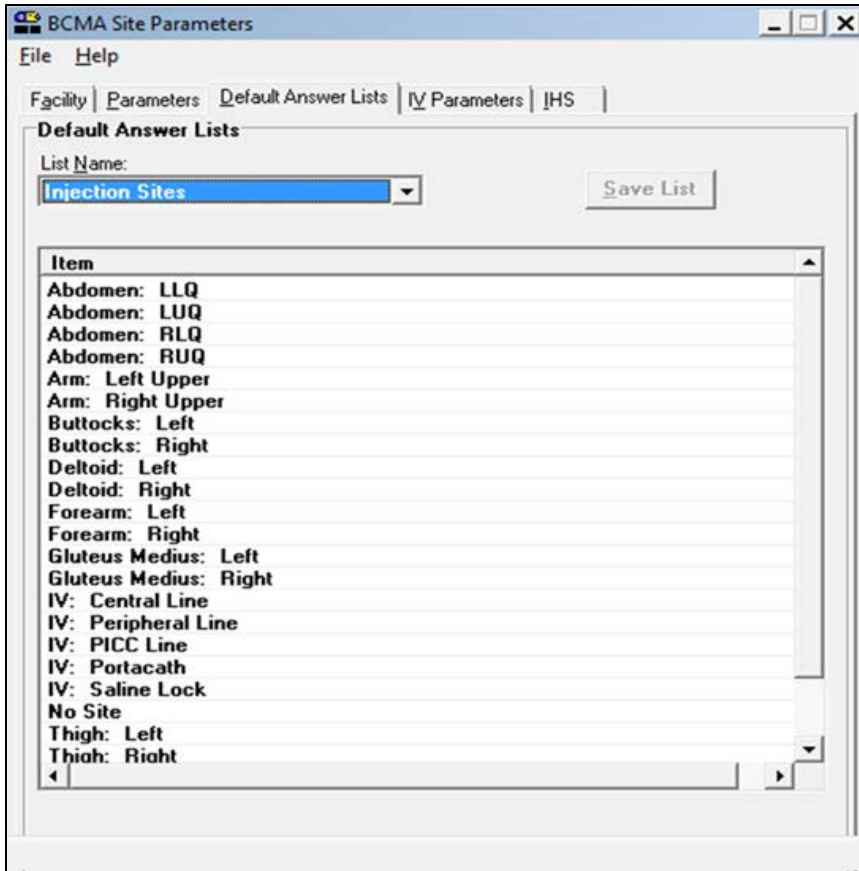


Figure 6: BCMA Site Parameters dialog, Default Answer Lists tab, Injection Sites list

BCMA Site Parameter GUI Configuration

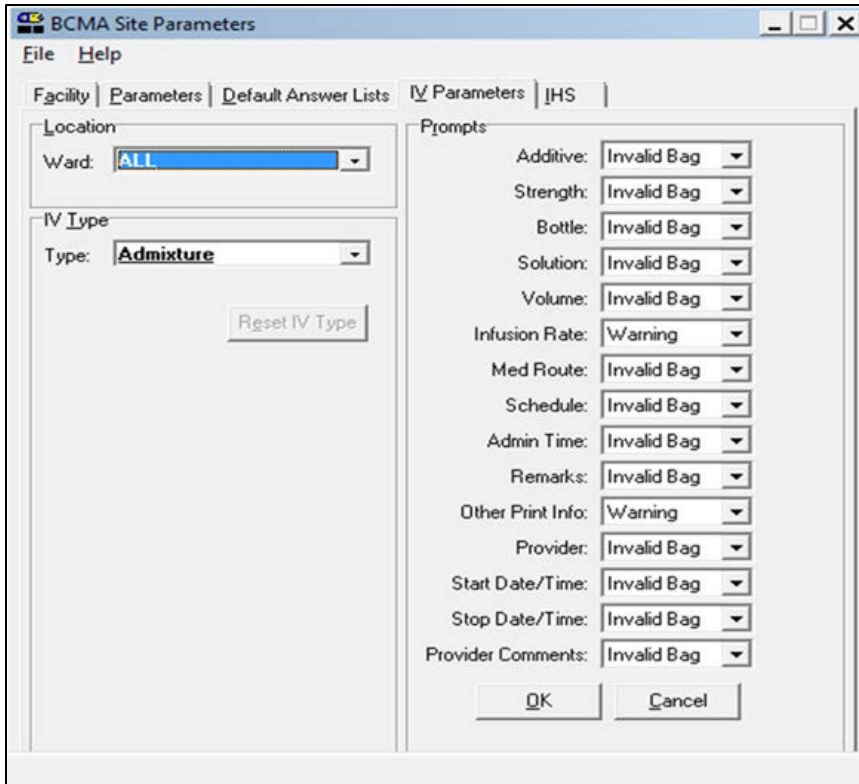


Figure 7: BCMA Site Parameters dialog, IV Parameters tab