



RESOURCE AND PATIENT MANAGEMENT SYSTEM

# **Bar Code Medication Administration GUI**

(BCMA)

## **Installation Guide**

Version 3.0 Patch 42  
September 2014

Revised January 2016

Office of Information Technology  
Division of Information Technology

## Document Revision History

Date	Section	Description of Change	Revised by
Sep 2014	All	Initial Release	N/A
Jan 2016	1.0, Step 13	Added <b>K=1500</b> to the end of the path.	D. Alcorn

# Table of Contents

<b>1.0</b>	<b>Install BCMA Broker and BCMA Client Software.....</b>	<b>1</b>
<b>2.0</b>	<b>Install the BCMA Parameters Shortcut.....</b>	<b>7</b>
	<b>Acronym List .....</b>	<b>11</b>
	<b>Contact Information .....</b>	<b>12</b>

## 1.0 Install BCMA Broker and BCMA Client Software

The Bar Code Medication Administration (BCMA) Client shortcut should be installed not only on the BCMA workstations, but also on the Inpatient Pharmacy, Nurse, and Nurse Manger workstations because there are many medication management activities that should be conducted apart from scanning medications at the bedside.

1. Log on to the workstation as administrator.
2. Unzip **Broker\_BCMA\_42.zip** and locate **Install.cmd** within the unzipped folder.

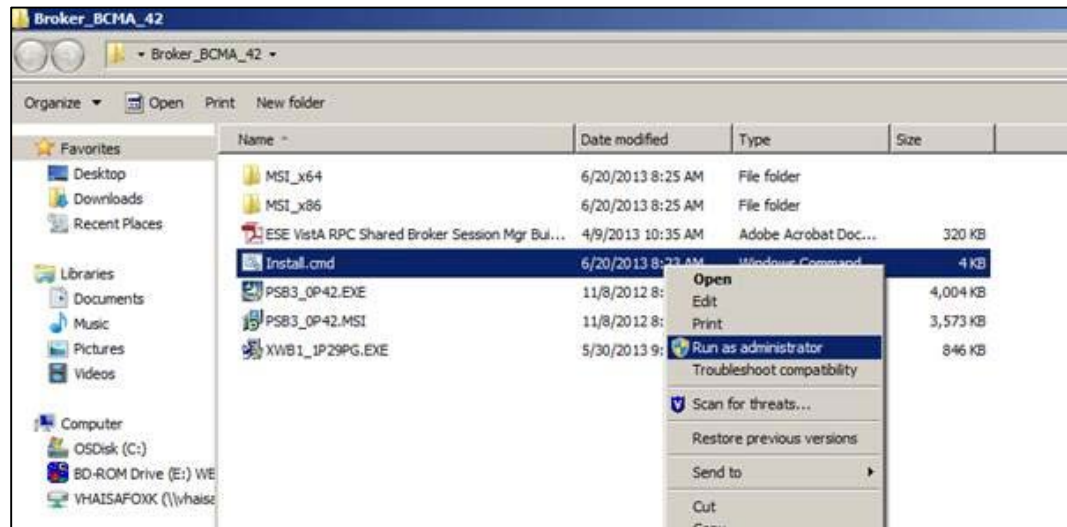


Figure 1-1: Windows Explorer window showing the contents of the unzipped folder

3. Right click **Install.cmd** and select **Run as administrator** (This is necessary even though you logged in as Administrator). The **Welcome** dialog (Figure 1-2) displays. The Broker (XWB1\_1P29PG.EXE) will be installed first.

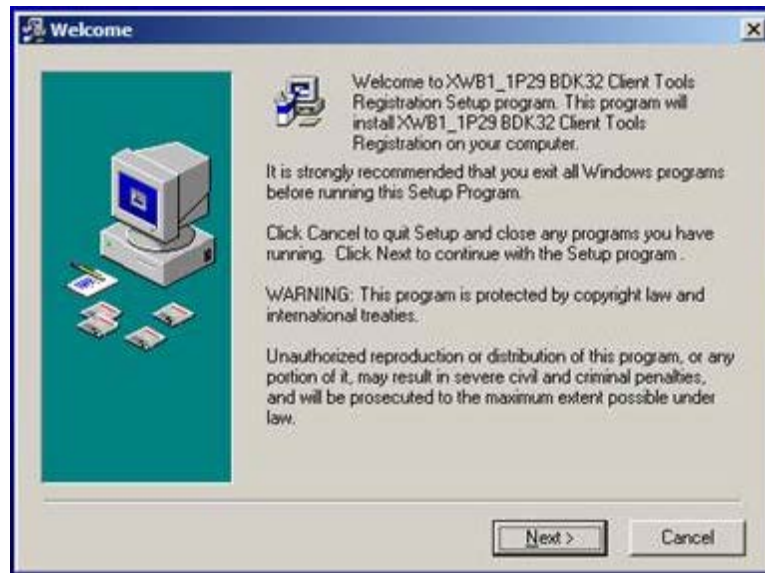


Figure 1-2: Installation Wizard, **Welcome** dialog

4. Click **Next**. The **Read Me File** dialog (Figure 1-3) displays.

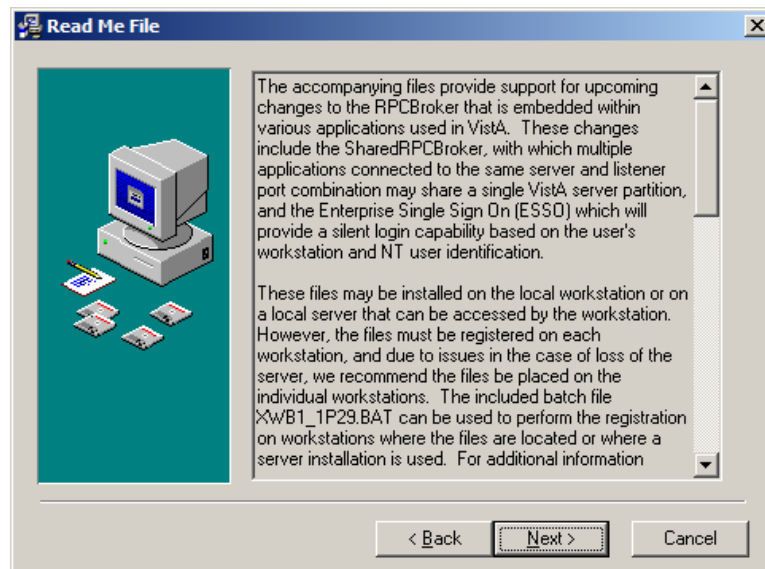


Figure 1-3: Installation Wizard, **Read Me File** dialog

5. Click **Next**. The **Choose Destination Location** dialog (Figure 1-4) displays.

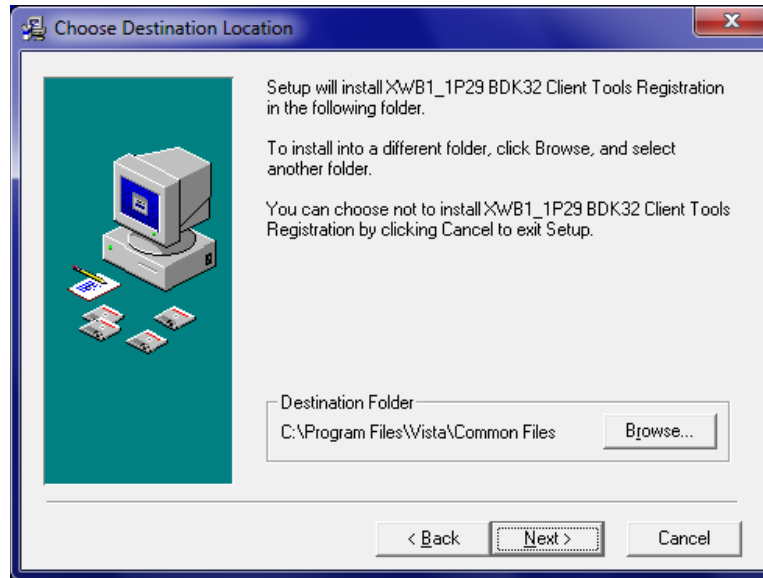


Figure 1-4: Installation Wizard, **Choose Destination Location** dialog

6. Click **Next**, accepting the default **Destination Folder** without change; do not click **Browse**. The **Start Installation** dialog (Figure 1-5) displays.

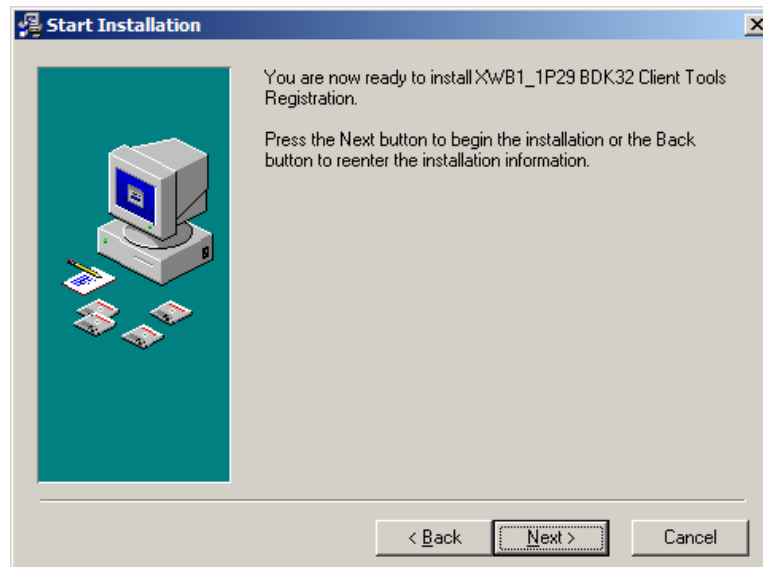


Figure 1-5: Installation Wizard, **Start Installation** dialog

7. Click **Next**. The **Installation Complete** dialog (Figure 1-6) displays.

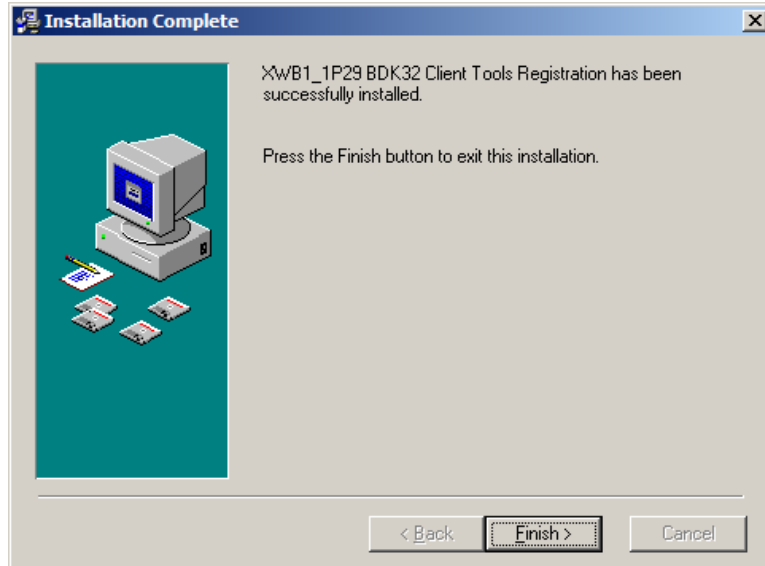


Figure 1-6: Installation Wizard, **Installation Complete** dialog

8. Click **Finish**.
9. Wait for the following to install; these are silent background installs:
  - Resource and Patient Management (RPMS)/VistA Remote Procedure Call (RPC) Shared Broker Session Manager Update.
  - BCMA GUI PSB\*3\*42.
10. When finished (command screen closes), locate the **BCMA Client** shortcut (Figure 1-7) on the desktop.



Figure 1-7: **BCMA Client** shortcut

11. Right click the **BCMA Client** shortcut to display the right click menu (Figure 1-8).



Figure 1-8: BCMA Client shortcut right click menu

12. Select Properties. The **BCMA Client Properties** dialog (Figure 1-9) displays.

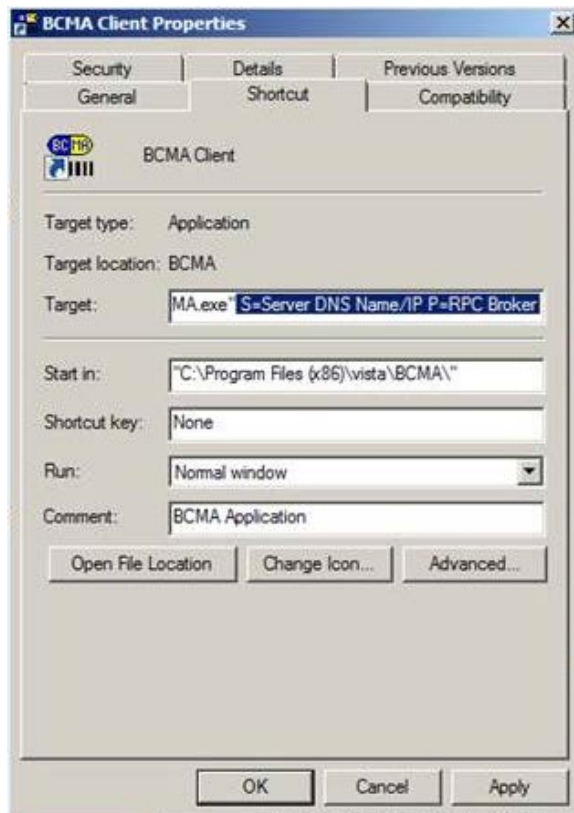


Figure 1-9: **BCMA Client Properties** dialog, **Shortcut** tab



- Leaving the existing path statement of the Target field unmodified, append the Server DNS Name or IP address, the RPMS RPC Broker Port number, and /NOCCOW /NOLOGFILE K=1500 at the end. It should look something like this:

```
“C:\Program Files (x86)\Vista\BCMA\BCMA.exe” S= 161.223.34.1 p=9522  
/NOCCOW /NOLOGFILE K=1500
```

where:

- S** = the site’s fully qualified DNS name or the site’s IP address.
- P** = the RPC Broker port number as defined in the PORT field of the RPMS RPC BROKER SITE PARAMETERS file.

- Click **Apply**.

- Select the **General** tab.

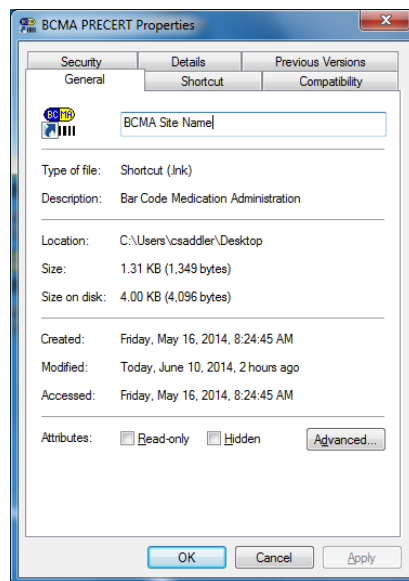


Figure 1-10: BCMA Client **Properties** dialog, **General** tab

- Type **BCMA (Site Name) Client** in the name field.

- Click **OK**.

## 2.0 Install the BCMA Parameters Shortcut

The BCMA Parameters shortcut is typically installed only on the BCMA Coordinator or Pharmacy Manager's workstation. To create a shortcut to BCMApar.exe, start at the BCMA Client Properties dialog, Shortcut tab (Figure 1-9):

1. Click **Open File Location** or **Find Target**. Windows Explorer (Figure 2-1) opens.

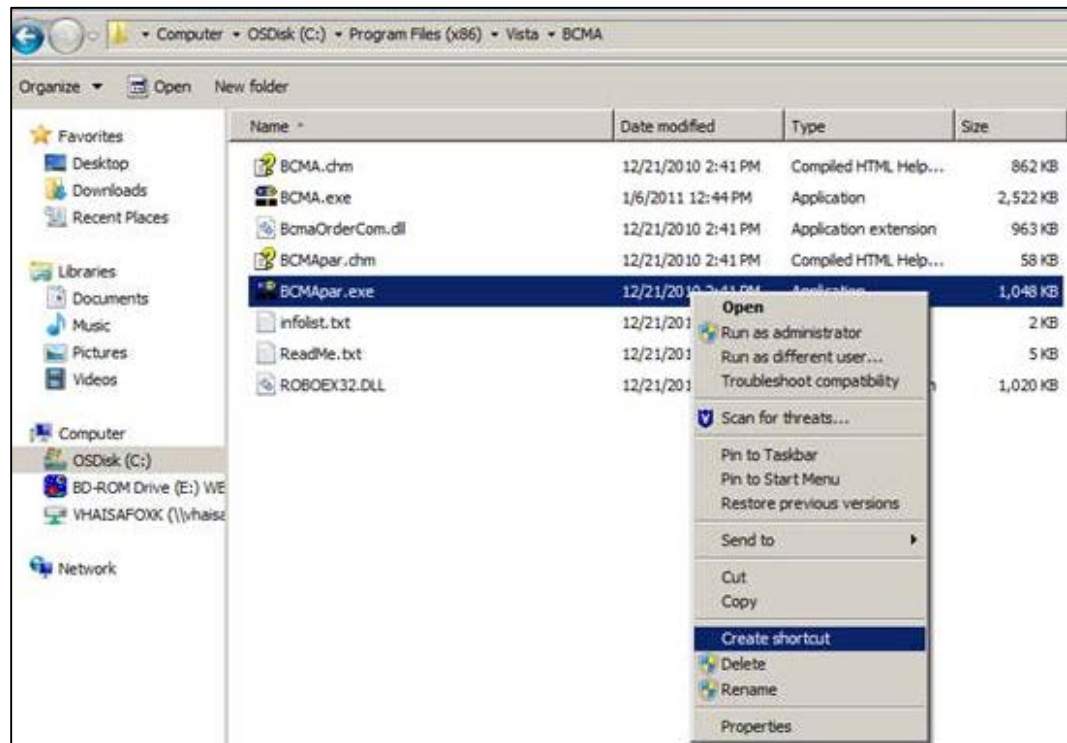


Figure 2-1: Windows Explorer right click menu

2. Right click **BCMApar.exe** and select **Create shortcut**.

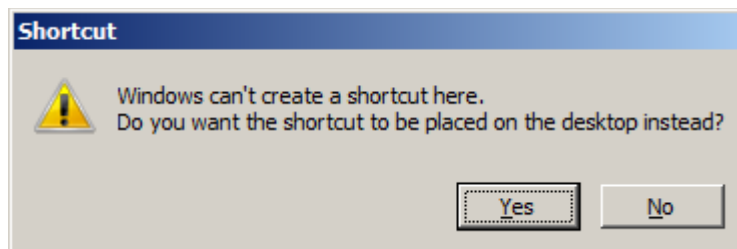


Figure 2-2: **Shortcut** warning dialog

3. If the **Shortcut** warning dialog (Figure 2-2) displays, click **Yes**. Otherwise, find the shortcut in the currently-opened folder and move it to the desktop.

- When finished, locate the shortcut on the desktop; its current name should be **Shortcut to BCMApar.exe** or **BCMApar.exe-shortcut**.
- Right click the **BCMApar** shortcut to display the right click menu (Figure 2-3).



Figure 2-3: Shortcut right click menu

- Select **Properties**. The **BCMApar Shortcut Properties** dialog (Figure 2-4) displays.

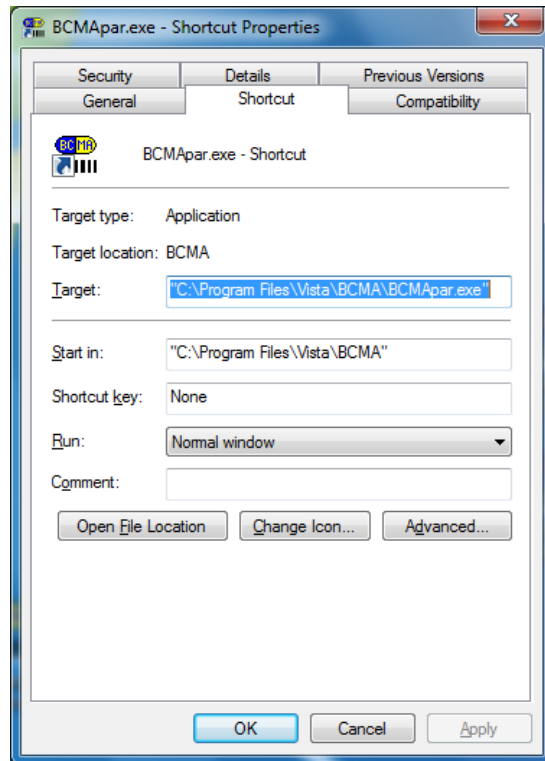


Figure 2-4: **BCMApar Shortcut Properties** dialog, **Shortcut** tab

7. In the **Target** field, append the Server DNS Name or IP address, and the RPMS RPC Broker Port number to the existing path statement. It should look something like this:

"C:\Program Files (x86)\Vista\BCMA\BCMA.exe" S= 161.223.34.1 p=9522

where:

- **S** = the site's fully qualified DNS name or the site's IP address.
  - **P** = the RPC Broker port number as defined in the PORT field of the RPMS RPC BROKER SITE PARAMETERS file.
8. Select the **General** tab (Figure 2-5).

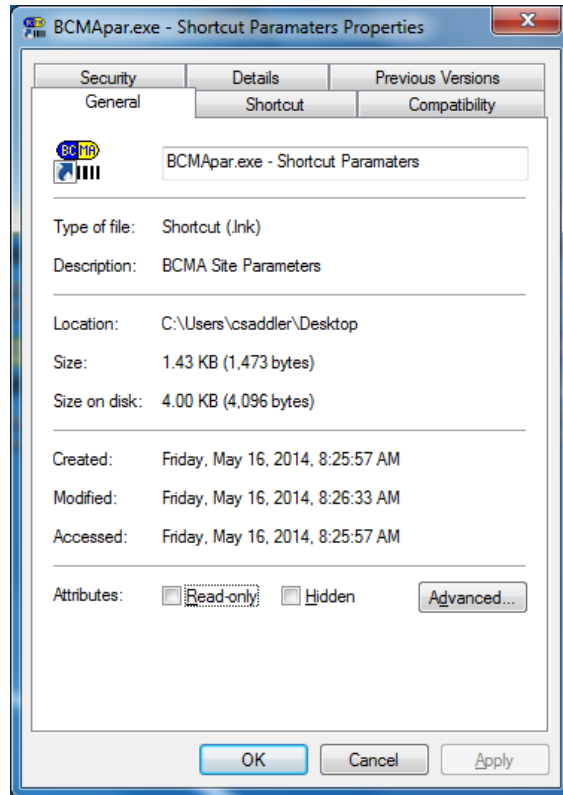


Figure 2-5: BCMApar Properties, General tab

9. Type **BCMA Parameters** in the name field.
10. Click **OK**.

## Acronym List

<b>Acronym</b>	<b>Meaning</b>
<b>BCMA</b>	Bar Code Medication Administration
<b>RPMS</b>	Resource and Patient Management System
<b>RPC</b>	Remote Procedure Call

## Contact Information

If you have any questions or comments regarding this distribution, please contact the OIT Help Desk (IHS).

**Phone:** (888) 830-7280 (toll free)

**Web:** <http://www.ihs.gov/helpdesk/>

**Email:** [support@ihs.gov](mailto:support@ihs.gov)