

# ICD-10 Endocrine, Nutritional and Metabolic Diseases

Rebecca Herrera, CCS, CCS-P, CPC, AHIMA  
Approved ICD-10-CM/PCS Trainer

2013 Indian Health Partnerships Conference  
ICD-10 Initiative  
Office of Information Technology  
August 13 - 15, 2013



# Objectives

- Welcome
  - Categories
  - Comparison
- Documentation Requirements
- Coding Cases
- References/Resources



# Diabetes Coding Changes

- **Five** updated Diabetes Mellitus categories to reflect the current clinical classification and manifestations:
  - E08      **Diabetes Mellitus *due to an underlying condition***
    - E08.22, Diabetes mellitus due to an underlying condition with diabetic chronic kidney disease
  - E09      ***Drug or chemical induced* diabetes mellitus**
    - E09.52, Drug or chemical induced diabetes mellitus with diabetic peripheral angiopathy with gangrene



# Diabetes Coding Changes

- E10      ***Type 1*** diabetes mellitus
  - E10.11, Type 1 diabetes mellitus with ketoacidosis with coma
- E11      ***Type 2*** diabetes mellitus
  - E11.41, Type 2 diabetes mellitus with diabetic mononeuropathy
- E13      ***Other specified*** diabetes mellitus
  - E13.341 Other specified diabetes mellitus with sever nonproliferative diabetic retinopathy with macular edema

***Note:*** *No longer use controlled and uncontrolled. Now classifies inadequately controlled, out of control, and poorly controlled diabetes mellitus by type with hyperglycemia.*

# Side-by-Side Look

Diabetes Codes in ICD-9	Diabetes Codes in ICD-10
<p>249.70 - Secondary diabetes mellitus with peripheral circulatory disorders, not stated as uncontrolled</p> <p>785.4 - Diabetic gangrene</p> <p>443.81 - Diabetic peripheral angiopathy</p>	<p>E09.52 - Drug or chemical induced diabetes mellitus with diabetic peripheral angiopathy with gangrene</p>
<p>250.31 - Diabetes with other coma, type I, not stated as uncontrolled</p>	<p>E10.11 - Type 1 diabetes mellitus with ketoacidosis with coma</p>
<p>250.60 - Diabetes with neurological manifestations, type II or unspecified, not stated as uncontrolled</p> <p>355.9 - Mononeuritis of unspecified site</p>	<p>E11.41 - Type 2 diabetes mellitus with diabetic mononeuropathy</p>
<p>249.40 - Secondary diabetes mellitus with renal manifestations , not stated as uncontrolled</p> <p>585.9 - Chronic kidney disease, unspecified</p>	<p>E08.22 - Diabetes mellitus due to an underlying condition with diabetic chronic kidney disease</p>

# Documentation to Include:

- Type or cause of diabetes:
  - Type 1
  - Type 2
  - Due to drugs or chemicals
  - Due to underlying condition
  - Other specified diabetes
- Body system complications related to diabetes, such as kidney or neurological complications
  - Specific complications, such as:
    - Chronic kidney disease
    - Foot Ulcer
    - Hypoglycemia without coma
- For Type II diabetes a secondary code for long term insulin use is required if patient is using insulin

# Case Study 1: Type II Diabetes with Complications

Adam a type II diabetes mellitus patient with diabetic peripheral angiopathy without gangrene who has used insulin for many years.





# Case 1: Index Look Up

- - - oral complication NEC E11.638
- - - periodontal disease E11.630
- - - peripheral angiopathy E11.51 ←
- - - - with gangrene E11.52
- - - polyneuropathy E11.42
- - - renal complication NEC E11.29
- - - renal tubular degeneration E11.29
- - - retinopathy E11.319
- - - - with macular edema E11.311



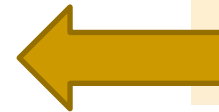


# Case 1: Tabular Look Up

## **E11 Type 2 diabetes mellitus**

**Includes:** diabetes (mellitus) due to insulin secretory defect  
diabetes NOS  
insulin resistant diabetes (mellitus)

**Use additional** code to identify any insulin use (Z79.4)



## **E11.5 Type 2 diabetes mellitus with circulatory complications**

### **E11.51 Type 2 diabetes mellitus with diabetic peripheral angiopathy without gangrene**

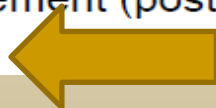
neonatal diabetes mellitus (P70.2)  
postpancreatectomy diabetes mellitus (E13.-)  
postprocedural diabetes mellitus (E13.-)  
secondary diabetes mellitus NEC (E13.-)  
type 1 diabetes mellitus (E10.-)

### **E11.0 Type 2 diabetes mellitus with hyperosmolarity**

# Case 1: Index Look Up

**Long-term** (current) (prophylactic) drug therapy (use of)

- agents affecting estrogen receptors and estrogen levels NEC Z79.818
- anastrozole (Arimidex) Z79.811
- antibiotics Z79.2
- - short-term use - omit code
- anticoagulants Z79.01
- anti-inflammatory, non-steroidal (NSAID) Z79.1
- antiplatelet Z79.02
- antithrombotics Z79.02
- aromatase inhibitors Z79.811
- aspirin Z79.82
- birth control pill or patch Z79.3
- bisphosphonates Z79.83
- contraceptive, oral Z79.3
- drug, specified NEC Z79.899
- estrogen receptor downregulators Z79.818
- Evista Z79.810
- exemestane (Aromasin) Z79.811
- Fareston Z79.810
- fulvestrant (Faslodex) Z79.818
- gonadotropin-releasing hormone (GnRH) agonist Z79.818
- goserelin acetate (Zoladex) Z79.818
- hormone replacement (postmenopausal) Z79.890
- insulin Z79.4



# Case 1: Tabular Look Up

## **Z79 Long term (current) drug therapy**

**Includes:** long term (current) drug use for prophylactic purposes

**Code also** any therapeutic drug level monitoring (Z51.81)

### **Z79.2 Long term (current) use of antibiotics**

### **Z79.3 Long term (current) use of hormonal contraceptives**

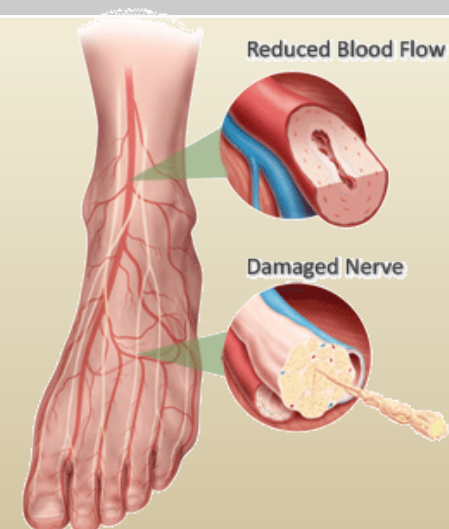
Long term (current) use of birth control pill or patch

### **Z79.4 Long term (current) use of insulin**



# Case Study 1 Answer: Type II Diabetes with Complications

ICD-9-CM Codes	ICD-10-CM Codes
250.70 Diabetes with peripheral circulatory disorders, type II or unspecified type not stated as uncontrolled	E11.51 Type 2 diabetes mellitus with diabetic peripheral angiopathy without gangrene
443.81 Peripheral angiopathy in diseases classified elsewhere	
V58.67 Long-term (current) use of insulin	Z79.4 Long term (current) use of insulin



<http://www.e-algos.com/wp-content/uploads/2011/05/neuropatia-diabetica.gif>

# Coding Study 2: Secondary Diabetes Mellitus

Thomas is 34 years old, he is being seen for ongoing management of steroid-induced diabetes mellitus. His diabetes was due to the prolonged use of corticosteroids, which have been discontinued. Thomas' diabetes has been managed with insulin for the last two years

[http://health.usnews.com/dbimages/master/16670/SS\\_PR\\_100513diabetes\\_treatment.jpg](http://health.usnews.com/dbimages/master/16670/SS_PR_100513diabetes_treatment.jpg)



# Case 2: Index Look Up

**Diabetes, diabetic** (mellitus) (sugar) E11.9

- with

- - amyotrophy E11.44

- - arthropathy NEC E11.618

- - autonomic (poly)neuropathy E11.43

- - cataract E11.36

- - Charcot's joints E11.610

- - chronic kidney disease E11.22

- - circulatory complication NEC E11.59

- dietary counseling and surveillance Z71.3

- due to drug or chemical E09.9

- - with

- - - amyotrophy E09.44



# Case 2: Tabular Look Up

## **E09 Drug or chemical induced diabetes mellitus**

**Code first** poisoning due to drug or toxin, if applicable (T36-T65 with fifth or sixth character 1-4 or 6)

**Use additional** code for adverse effect, if applicable, to identify drug (T36-T50 with fifth or sixth character 5)

**Use additional** code to identify any insulin use (Z79.4)

## **E09.8 Drug or chemical induced diabetes mellitus with unspecified complications**

## **E09.9 Drug or chemical induced diabetes mellitus without complications**

postprocedural diabetes mellitus (E13.-)

secondary diabetes mellitus NEC (E13.-)

type 1 diabetes mellitus (E10.-)

type 2 diabetes mellitus (E11.-)

## **E09.0 Drug or chemical induced diabetes mellitus with hyperosmolarity**



# Case 2 Tabular Look Up

## **E09 Drug or chemical induced diabetes mellitus**

**Code first** poisoning due to drug or toxin, if applicable (T36-T65 with fifth or sixth character 1-4 or 6)

**Use additional** code for adverse effect, if applicable, to identify drug (T36-T50 with fifth or sixth character 5)

**Use additional** code to identify any insulin use (Z79.4)

**Excludes1:** diabetes mellitus due to underlying condition (E08.-)

- gestational diabetes (O24.4-)

- neonatal diabetes mellitus (P70.2)

- postpancreatectomy diabetes mellitus (E13.-)

- postprocedural diabetes mellitus (E13.-)

- secondary diabetes mellitus NEC (E13.-)

- type 1 diabetes mellitus (E10.-)

- type 2 diabetes mellitus (E11.-)

## **E09.0 Drug or chemical induced diabetes mellitus with hyperosmolarity**



# Case 2: Drug Table

<b>Substance</b>	<b>Poisoning, Accidental unintentional</b>	<b>Poisoning, Intentional self-harm</b>	<b>Poisoning Assault</b>	<b>Poisoning, Undetermined</b>	<b>Adverse Effect</b>	<b>Underdosing</b>
Corticosteroid	T38.0X1	T38.0X2	T38.0X3	T38.0X4	T38.0X5	T38.0X6

# Case 2: Tabular Look Up

**T38 Poisoning by, adverse effect of and underdosing of hormones and their synthetic substitutes and antagonists, not elsewhere classified**

**Excludes1:** mineralocorticoids and their antagonists (T50.0-)  
oxytocic hormones (T48.0-)  
parathyroid hormones and derivatives (T50.9-)

The appropriate 7th character is to be added to each code from category T38

**T38.0X4 Poisoning by glucocorticoids and synthetic analogues, undetermined**

**T38.0X5 Adverse effect of glucocorticoids and synthetic analogues**

**T38.0X6 Underdosing of glucocorticoids and synthetic analogues**

**Excludes1:** glucocorticoids, topically used (T40.-)

**T38.0X Poisoning by, adverse effect of and underdosing of glucocorticoids and synthetic analogues**

**T38.0X1 Poisoning by glucocorticoids and synthetic analogues, accidental (unintentional)**  
Poisoning by glucocorticoids and synthetic analogues NOS

**T38.0X2 Poisoning by glucocorticoids and synthetic analogues, intentional self-harm**

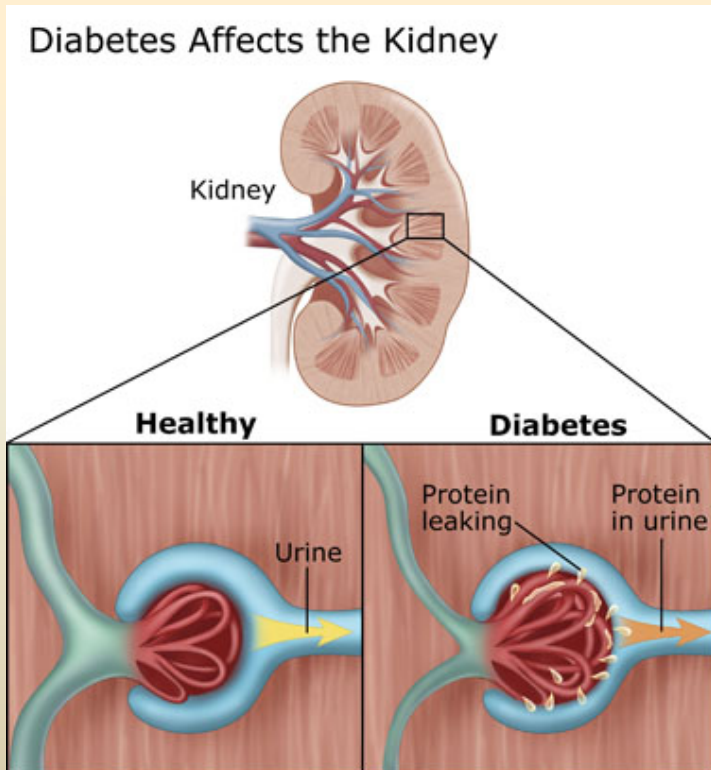
**T38.0X3 Poisoning by glucocorticoids and synthetic analogues, assault**

# Case Study 2 Answer: **Secondary Diabetes Mellitus**

ICD-9-CM Codes	ICD-10-CM Codes
249.00 Secondary diabetes mellitus without mention of complication, not stated as uncontrolled, or unspecified	T38.0x5S Adverse effect of glucocorticoids and synthetic analogues, sequela
	E09.9 Diabetes, diabetic, (mellitus) (sugar), due to drug or chemical
V58.67 Long-term (current) use of insulin	Z79.4 Long term (current) use of insulin

# Case Study 3: Type I Diabetes with Complications

**Wilbur is a type 1 diabetic with diabetic nephropathy with stage 2 CKD and a diabetic cataract**



[http://trialx.com/curetalk/wp-content/blogs.dir/7/files/2011/05/diseases/Diabetic\\_Nephropathy-3.jpg](http://trialx.com/curetalk/wp-content/blogs.dir/7/files/2011/05/diseases/Diabetic_Nephropathy-3.jpg)

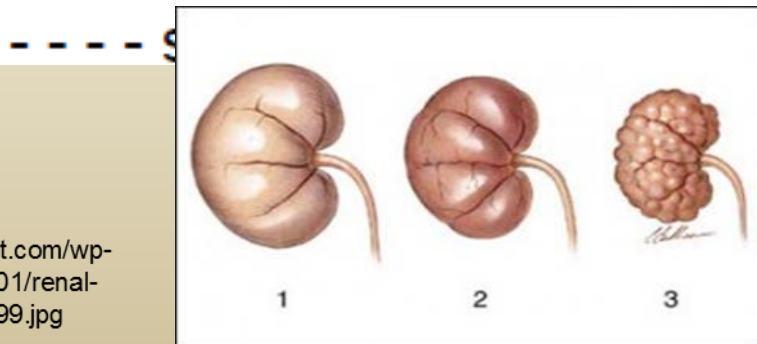


<http://www.rushabhe.yehospital.com/crystalens/images/cataracteyes.jpg>



# Case 3: Index Look Up

- - - necrobiosis lipoidica E10.620
- - - nephropathy E10.21
- - - neuralgia E10.42
- - - neurologic complication NEC E10.49
- - - neuropathic arthropathy E10.610



# Case 3: Tabular Look Up

## **E10 Type 1 diabetes mellitus**

**Includes:** brittle diabetes (mellitus)

diabetes (mellitus) due to autoimmune process

diabetes (mellitus) due to immune mediated pancreatic islet beta-cell destruction

idiopathic diabetes (mellitus)

juvenile onset diabetes (mellitus)

ketosis-prone diabetes (mellitus)

**Excludes1:** diabetes mellitus due to underlying condition (E08.-)

drug or chemical induced diabetes mellitus (E09.-)

gestational diabetes (O24.4-)

hyperglycemia NOS (R73.9)

neonatal diabetes mellitus (P70.2)

postpancreatectomy diabetes mellitus (E13.-)

postprocedural diabetes mellitus (E13.-)

secondary diabetes mellitus NEC (E13.-)

type 2 diabetes mellitus (E11.-)

### **E10.1 Type 1 diabetes mellitus with ketoacidosis**

**E10.10 Type 1 diabetes mellitus with ketoacidosis without coma**

**E10.11 Type 1 diabetes mellitus with ketoacidosis with coma**

### **E10.2 Type 1 diabetes mellitus with kidney complications**

**E10.21 Type 1 diabetes mellitus with diabetic nephropathy**

Type 1 diabetes mellitus with intercapillary glomerulosclerosis

# Case 3: Tabular Look Up

## **E10.22 Type 1 diabetes mellitus with diabetic chronic kidney disease**

Type 1 diabetes mellitus with chronic kidney disease due to conditions classified to .21 and .22

**Use additional** code to identify stage of chronic kidney disease (N18.1-N18.6)

## **E10.29 Type 1 diabetes mellitus with other diabetic kidney complication**

Type 1 diabetes mellitus with renal tubular degeneration

## **E10.3 Type 1 diabetes mellitus with ophthalmic complications**

### **E10.31 Type 1 diabetes mellitus with unspecified diabetic retinopathy**

**E10.311 Type 1 diabetes mellitus with unspecified diabetic retinopathy with macular edema**

**E10.319 Type 1 diabetes mellitus with unspecified diabetic retinopathy without macular edema**

### **E10.32 Type 1 diabetes mellitus with mild nonproliferative diabetic retinopathy**

Type 1 diabetes mellitus with nonproliferative diabetic retinopathy NOS

## **E10.36 Type 1 diabetes mellitus with diabetic cataract**

# Case 3: Tabular Look Up

## **N18 Chronic kidney disease (CKD)**

**Code first** any associated:

diabetic chronic kidney disease (E08.22, E09.22, E10.22, E11.22, E13.22)

hypertensive chronic kidney disease (I12.-, I13.-)

**Use additional** code to identify kidney transplant status, if applicable, (Z94.0)

**N18.1 Chronic kidney disease, stage 1**

**N18.2 Chronic kidney disease, stage 2 (mild)**



# Case Study 3 Answer: Type I Diabetes with Complications

ICD-9-CM Codes	ICD-10-CM Codes
<b>250.41</b> Diabetes with renal manifestations, type I [juvenile type], not stated as uncontrolled	<b>E10.21</b> Type 1 diabetes mellitus with diabetic nephropathy
<b>583.81</b> Nephritis and nephropathy, not specified as acute or chronic, in diseases classified elsewhere complication	<b>E10.22</b> Type 1 diabetes mellitus with diabetic chronic kidney disease
<b>585.2</b> Chronic kidney disease, Stage II (mild)	<b>N18.2</b> Chronic kidney disease stage 2 (mild)
<b>250.51</b> Diabetes with ophthalmic manifestations, type I [juvenile type], not stated as uncontrolled	<b>E10.36</b> Type 1 diabetes mellitus with diabetic cataract
<b>366.41</b> Diabetic cataract	



# Resources/References

- [http://www.ahima.org/downloads/ppts/resources/ICD-10/CDI\\_Coding\\_Tip\\_Sheet\\_ICD-10\\_Documentation\\_Diabetes.ppt](http://www.ahima.org/downloads/ppts/resources/ICD-10/CDI_Coding_Tip_Sheet_ICD-10_Documentation_Diabetes.ppt)
- <http://www.cdc.gov/nchs/ppt/duc2002/berglund.ppt>
- [http://www.montanahima.net/pdf/ICD-10-CM\\_spring\\_2011\\_handout.ppt](http://www.montanahima.net/pdf/ICD-10-CM_spring_2011_handout.ppt)
- <http://www.cms.gov/Medicare/Coding/ICD10/2013-ICD-10-CM-and-GEMs.html>





# Resources/References

- <http://www.cms.gov/Medicare/Coding/ICD10/Downloads/AAPCICD-10WillChangeEverything.pdf>
- <http://www.aapc.com/icd-10-newsletter/issue13.html>
- [http://www.ahima.org/downloads/ppts/resources/ICD-10/CDI\\_ICD-10\\_101.ppt](http://www.ahima.org/downloads/ppts/resources/ICD-10/CDI_ICD-10_101.ppt)



# Resources/References

- <http://journal.ahima.org/2012/05/16/coding-diabetes-mellitus-in-icd-10-cm-4/>
- <http://www.justcoding.com/282660/icd9cm-vs-icd10cm-examine-the-differences-in-diabetes-coding>



# Questions

Thank you!

