



RESOURCE AND PATIENT MANAGEMENT SYSTEM

# **Clinical Reporting System**

(BGP)

## **Installation Guide and Release Notes**

Version 13.0  
November 2012

Office of Information Technology  
Division of Information Resource Management  
Albuquerque, New Mexico

## Table of Contents

<b>1.0</b>	<b>Introduction.....</b>	<b>1</b>
1.1	Key Changes in Version 13.0 .....	1
1.1.1	Changes to National GPRA Reports .....	1
1.1.2	Logic Changes to National GPRA/GPRAMA Report Measures...1	
1.1.3	Key Logic Changes to Non-GPRA Measures.....	3
1.1.4	Additional Key Enhancements and Revisions .....	3
<b>2.0</b>	<b>Installation Notes.....</b>	<b>4</b>
2.1	CRS Distribution Contents and Required Resources .....	4
2.1.1	Contents of Distribution .....	4
2.1.2	Required Resources.....	4
2.2	Visual CRS (GUI) Distribution Contents and Required Resources	5
2.2.1	Contents of GUI CRS Distribution .....	5
2.2.2	Required Resources for GUI CRS.....	5
2.3	Before You Begin.....	5
<b>3.0</b>	<b>Installation Instructions .....</b>	<b>6</b>
3.1	Installation of the CRS GUI.....	7
3.1.1	Installation on the RPMS server .....	7
3.1.2	Installation on each user's (client) PC .....	8
<b>4.0</b>	<b>Sample Installations.....</b>	<b>9</b>
4.1	Sample Installation of CRS on RPMS Server .....	9
4.2	Sample Installation of the CRS GUI.....	14
	<b>Acronym List .....</b>	<b>18</b>
	<b>Contact Information .....</b>	<b>19</b>

## Preface

The Government Performance and Results Act (GPRA) requires federal agencies to report annually on how the agency measured against the performance targets set in its annual plan. The Indian Health Service (IHS) GPRA measures include clinical prevention and treatment, quality of care, infrastructure, and administrative efficiency functions.

The IHS Clinical Reporting System (CRS) is a Resource and Patient Management System (RPMS) software application designed for national reporting, as well as Area Office and local monitoring of clinical GPRA and developmental measures. CRS was first released for FY 2002 performance measures (as GPRA+) and is based on a design by the Aberdeen Area Office (GPRA2000).

This manual provides instructions on using the CRS. Version 13.0 adds fiscal year (FY) 2013 clinical performance measures to existing FY 2002 through FY 2012 measures.

CRS is the reporting tool used by the IHS Office of Planning and Evaluation to collect and report clinical performance results annually to the Department of Health and Human Services and to Congress.

Each year, an updated version of CRS software is released to reflect changes in the logic descriptions of the different denominators and numerators. Additional performance measures may also be added. Local facilities can run reports as often as they want and can also use CRS to transmit data to their Area Office. The Area Office can use CRS to produce an aggregated Area Office report for either annual GPRA or Area Office director performance reports.

CRS produces reports on demand from local RPMS databases for both GPRA and developmental clinical performance measures that are based on RPMS data, thus eliminating the need for manual chart audits for evaluating and reporting clinical measures.

To produce reports with comparable data across every facility, the GPRA measures definitions were “translated” into programming code with the assistance of clinical subject matter experts. CRS uses predefined taxonomies to find data items in the RPMS Patient Care Component to determine if a patient meets the performance measure criteria. Taxonomies contain groups of codes (e.g., diagnoses or procedures) or site-specific terms. Each performance measure topic has one or more defined denominators and numerators.

Administrative and clinical users can review individual or all measures at any time to

- Identify potential data issues in their RPMS; for example, missing or incorrect data.
- Monitor their site's performance against past national performance and upcoming agency goals
- Identify specific areas where the facility is not meeting the measure in order to initiate business process or other changes
- Quickly measure impact of process changes on performance measures
- Identify IHS Area Offices meeting or exceeding measures to provide lessons learned

Users of the RPMS CRS include

- Area Office and site quality improvement staff
- Compliance officers
- GPRA coordinators
- Clinical staff, such as physicians, nurses, nurse practitioners, and other providers
- Area Office directors
- Any staff involved with quality assurance initiatives
- Staff who run the various CRS reports

## 1.0 Introduction

This manual provides user instructions on installing Version 13.0 of the Clinical Reporting System (CRS). The manual provides installation instructions for both the Resource and Patient Management System (RPMS) server side software and the Visual CRS graphical user interface (GUI).

### 1.1 Key Changes in Version 13.0

#### 1.1.1 Changes to National GPRA Reports

Renamed National GPRA & PART Report to National GPRA/GPRAMA Report.

#### 1.1.2 Logic Changes to National GPRA/GPRAMA Report Measures

- GPRA Developmental Measures:
  - Added the following new GPRA Developmental measures: Access to Dental Service (pre-natal or nursing mother visit); Cancer Screening: Pap Smear Rates (Pap Smear + HPV visit)
  - Deleted the following GPRA Developmental measures: Diabetes: Blood Pressure Control; Diabetic Retinopathy; Dental Sealants; Topical Fluoride; Childhood Immunizations (4:3:1:3/4:3:1:4 combo and 3 or 4 HiB); Cancer Screening: Pap Smear Rates (Pap Smear in past 4 years); Colorectal Cancer Screening (Revised Logic #1-HEDIS); Tobacco Cessation (Developmental Logic); Comprehensive CVD-Related Assessment; Use of High-Risk Medications in the Elderly
  - Updated HIV Screening to look for positive results in either HIV-1 or HIV-2 tests
  - Updated codes in the following measures: Childhood Immunizations; Cancer Screening: Pap Smear Rates; Comprehensive Cancer Screening
- Diabetes: Glycemic Control: (1) Added measure for A1c less than (<) 8. This measure is the new GPRAMA measure. (2) Deleted previous GPRA measure of A1c less than (<) 7. (3) Updated logic to look for the last A1c done on a visit if there is more than one test with results for a visit.
- Diabetes: Blood Pressure Control: (1) Added measure for blood pressure less than (<) 140/90. This is the new GPRA measure. (2) Deleted previous GPRA measure of blood pressure less than (<) 130/80. (3) Added service code and clinic code exclusions to blood pressures used in calculation to exclude those taken in the hospital or surgery visits.

- Diabetes: Nephropathy Assessment: Deleted POV code 585.5 from ESRD definition.
- Diabetic Retinopathy: (1) Excluded patients with bilateral blindness from the denominator. (2) Added measures for JVN visits, Ophthalmology visits, and Optometry visits.
- Dental Sealants: (1) Added rate measure previously in GPRA Developmental report, with age range updated to 2-15 and age breakdowns. (2) Added age breakdown measure to existing count measure. (3) Added logic to only count 0007 code if it is not documented on the same visit as one of the ADA or CPT codes.
- Topical Fluoride: (1) Added rate measure previously in GPRA Developmental report, with age range updated to 1-15 and age breakdowns. (2) Added age breakdown measure to existing count measure.
- Childhood Immunizations: (1) Deleted 43133 and 431331 combination measures. (2) Updated GPRAMA combo measure to look for three or four HiB. The new combo is called 4313\*314. (3) Updated HiB measure to look for three or four Hib. (4) Removed contraindications for OPV.
- Cancer Screening: Pap Smear Rates: (1) Added measure for ages 25-64 with Pap Smear in the past four years, previously in GPRA Developmental report. This is the new GPRA measure. (2) Deleted previous GPRA measure of patients aged 21-64 with Pap Smear in the past three years. (3) Deleted POV code V76.2 from Pap Smear definition. (4) Moved POV code V76.47 from Pap Smear definition to hysterectomy definition.
- Colorectal Cancer Screening: Removed measures with old logic that were previously in the GPRA report.
- Colorectal Cancer Screening (Revised Logic #1-HEDIS): (1) Added topic and measures previously in GPRA Developmental report. This contains the new GPRA measure. (2) Updated procedure code 45.8 to 45.8\* in total colectomy definition.
- Tobacco Cessation: (1) Added topic and measures previously in GPRA Developmental report. This contains the new GPRA measure. (2) Removed measures with old logic that were previously in the GPRA report.
- Obesity Assessment: Removed topic from GPRA report.
- Childhood Weight Control: Removed topic from GPRA report.
- Controlling High Blood Pressure – Million Hearts: Added new topic.
- Comprehensive CVD-Related Assessment: (1) Deleted old measures and replaced them with measures previously in GPRA Developmental report. (2) Added logic to look at Patient Goal file for lifestyle education definition.

- Breastfeeding Rates: Changed “PART” label to “GPRA”.

### 1.1.3 Key Logic Changes to Non-GPRA Measures

For key logic changes to non-GPRA measures, please refer to the CRS 2013 (version 13.0) Selected Measures Report Performance Measure List and Definitions document located on the CRS Web site at

[http://www.ihs.gov/cio/crs/documents/crsv13/SelectedMeasuresV13\\_0.pdf](http://www.ihs.gov/cio/crs/documents/crsv13/SelectedMeasuresV13_0.pdf).

### 1.1.4 Additional Key Enhancements and Revisions

- Added functionality to run the GPRA Dashboard report by primary provider, and to choose the GPRA year for which to run the report.
- Removed the National GPRA & PART Height and Weight Local Data File.

## 2.0 Installation Notes

**Note:** Read the entire Notes File prior to attempting any installation.

**Prefix:** BGP

**Current Version:** 13.0

**Note:** This distribution of the CRS contains Version 13.0 of CRS and the GUI front end to the CRS system. The server-side (i.e. “roll-and-scroll” or backend) version 13.0 of the package can be installed alone or both the GUI and the server-side versions can be installed. Currently, there is no requirement to install the GUI.

Please install version 13.0 of CRS (bgp\_1300.k) at all sites regardless of whether the site opts to install and use the GUI portion of the package. Version 13.0 of CRS and the GUI have different requirements so please take note of the requirements section for each piece of the software.

### 2.1 CRS Distribution Contents and Required Resources

#### 2.1.1 Contents of Distribution

File	Description
bgp_1300.k	Kernel Installation and Distribution System (KIDS) file containing software
bgp_130i.pdf	Installation guide in PDF format (this manual)
bgp_130t.pdf	Technical Manual in PDF format
bgp_130u.pdf	User Manual in PDF format
bgp_130u_logicselected.pdf	CRS Clinical Performance Measure Logic Manual in PDF format
bgp_130u_visual.pdf	Visual CRS User Manual in PDF format
bgp_1300client.zip	Visual CRS software for Client's PC

#### 2.1.2 Required Resources

IHS Clinical Reporting System version 12.1 through patch 1 (BGP\*12.1\*1) must be installed.

iCare Version 2.3 through patch 1 (BQI\*2.3\*1) must be installed.



## 2.2 Visual CRS (GUI) Distribution Contents and Required Resources

### 2.2.1 Contents of GUI CRS Distribution

- bgp\_1300client.zip

The following two files are contained in the zip file:

- bgp\_1300setup.exe
- bgp\_1300.msi

### 2.2.2 Required Resources for GUI CRS

Additional requirements for installing and using Visual CRS on a client's PC:

- *On the RPMS Server:*
  - BMX v4.0
  - IHS Clinical Reporting System version 13.0
- *On the Client (User's) PC:*
  - Windows XP Service Pack 3 or higher
  - Microsoft Office 2003 or later
  - .NET Framework v4.0
  - If the CRS GUI is not going to be installed, ignore these requirements.
  - If the .NET Framework v4.0 is not installed it will automatically be downloaded and installed when the client installation is started.

## 2.3 Before You Begin

- Make a copy of this distribution for offline storage
- Print all notes/readme files
- Create a printed audit trail, in case there are any problems with the installation

To capture terminal output during the installation, use an auxport printer attached to the terminal on which the installation is being performed.

## 3.0 Installation Instructions

**Note:** This installation is a KIDS install. For any questions on how to do a KIDS installation, please contact your Area Office information systems support personnel.

In all UCIs running the IHS CRS:

1. Ensure that users are unable to use the CRS for the duration of this installation.
2. Save all routines (^%RO (CACHE) in the BGP3\* namespace for use in returning to the prior existing version, if needed.

**Notes:**

1. *Do not* delete any of these routines prior to installation.
2. If no problems are noted with the new installation, remove saved routines from your system 7–10 days after this install.

3. Install bgp\_1300.k. This file is the KIDS file for the IHS CRS.
  - a. Load the distribution into KIDS using **Option 1** on the **KIDS Installation menu**. The distribution was released in a file named bgp\_1300.k
  - b. Verify the load using **Option 2** on the **KIDS Installation menu**.
  - c. Consider using **Options 3** and **4** on the **KIDS Installation menu** to print and compare the Transport global.
  - d. Install the distribution using option 6 on the Installation menu.
  - e. For results, use the **KIDS Install File Print** option to view/print the IHS CLINICAL REPORTING SYSTEM V13.0 entry.

**Note:** For assistance with a KIDS install, call your Area Office support personnel.

4. After the install completes, assign security keys, as appropriate, using the following table.

Name	Descriptive Name	Description
BGPZAREA	BGP Area Report	This key unlocks the Area Office report options on the main BGPMENU. Note: This key should be assigned <i>only</i> at the Area Office level.
BGPZMENU	BGP Main Menu–CRS	This key unlocks the main CRS menu. It should be assigned to all users who need to run GPRA/CRS reports.
BGPZ PATIENT LISTS	BGP Patient Lists	This key allows the holder to obtain patient lists. The patient lists contain sensitive patient/clinical information. This key should be given <i>only</i> to those users who have a need for such information.
BGPZ SITE PARAMETERS	BGP Site Parameters	This key should be given to those with authority to update the site parameters.
BGPZ TAXONOMY EDIT	BGP Taxonomy Edit	This key should be given <i>only</i> to users who will need to update taxonomies.

### 3.1 Installation of the CRS GUI

There are two parts to the CRS GUI install: installation on the RPMS server and installation on the local (client) PC. See the steps below for installation instructions.

#### 3.1.1 Installation on the RPMS server

1. Make sure BMX Version 4.0 has been installed in RPMS on the RPMS Server.
2. Make sure CRS version 13.0 has been installed in RPMS on the RPMS server. (See instructions above.)

**Note:** If a previous version of Visual CRS is being used you will not need to perform Steps 3 and 4. If this is the first time Visual CRS is being used perform Steps 3 and 4.

3. Assign option BGPGRPC as a secondary menu option with a synonym of **BGPG** for each user.
4. Assign option BMXRPC as a secondary menu option with a synonym of **BMX** for each user.

### 3.1.2 Installation on each user's (client) PC

1. Place `bgp_1300client.zip` into a directory of your choice and unzip the file. There are two files included in the zip file: `bgp_1300.msi` and `bgp_1300setup.exe`.
2. If a previous version of the Visual CRS product is installed it will need to be removed. Go to the **Start** menu. Then go to **Control Panel** then click **Add/Remove Programs** and select and remove **Visual CRS**.
3. Double click the **bgp\_1300setup.exe** file that was distributed with Visual CRS. If asked, accept the License Agreement and follow the instructions for downloading and installing Microsoft .Net Framework v4.0 (this will only occur if the most current version of Microsoft.Net Framework v4.0 is not on the local PC). This step takes approximately 20-30 minutes over a DSL connection.
4. Follow the prompts on the **Visual CRS Setup Screens** and accept all of the defaults.
5. Double click the **Visual CRS** shortcut that appears on the desktop.
6. If this is the first install you will need to add a new connection. Please refer to the BMX 4.0 User Manual for instructions.
7. When the **RPMS Login** window appears, enter your RPMS access and verify codes, and then click **OK**.
8. If data for multiple facilities is stored on the same RPMS database, the Select Division window is displayed. Select a Division, and then click **OK**.
9. You are now in the Visual CRS software.

## 4.0 Sample Installations

### 4.1 Sample Installation of CRS on RPMS Server

```

Select Kernel Installation & Distribution System Option:

KIDS  Kernel Installation & Distribution System ...
NTEG  Build an 'NTEG' routine for a package
PG    Programmer mode
      Calculate and Show Checksum Values
      Clean Error Trap
      Delete Unreferenced Options
      Error Processing ...
      Global Block Count
      List Global
      Map Pointer Relations
      Number base changer
      Routine Tools ...
      Test an option not in your menu

Select Programmer Options Option: KID  Kernel Installation & Distribution System

      Edits and Distribution ...
      Utilities ...
      Installation ...
      Patch Monitor Main Menu ...

Select Kernel Installation & Distribution System Option: Installation

1      Load a Distribution
2      Verify Checksums in Transport Global
3      Print Transport Global
4      Compare Transport Global to Current System
5      Backup a Transport Global
6      Install Package(s)
      Restart Install of Package(s)
      Unload a Distribution

Select Installation Option: 1  Load a Distribution
Enter a Host File: C:\cml\ bgp_1300.k

KIDS Distribution saved on Oct 24, 2012@12:11:36
Comment: IHS CLINICAL REPORTING SYSTEM V13.0

OK to continue with Load? NO// YES

Distribution OK!

Want to Continue with Load? YES//
Loading Distribution...
Build IHS CLINICAL REPORTING 13.0 has an Enviromental Check Routine
Want to RUN the Environment Check Routine? YES//
Will first run the Environment Check Routine, BGP3POS

      Patch "BGP*12.1*1" is installed.
      Patch "BQI*2.3*1" is installed.

```

```
Select Installation Option: INStall Package(s)
Select INSTALL NAME:      IHS CLINICAL REPORTING 13.0      Loaded from Distribution
                          Loaded from Distribution 10/24/12@12:51:15
                          => IHS CLINICAL REPORTING V13.0 ;Created on Oct 24, 2012@13:39:32

This Distribution was loaded on Oct 24, 2012@12:51:15 with header of
  IHS CLINICAL REPORTING V13.0 ;Created on Oct 24, 2012@13:39:32
  It consisted of the following Install(s):
IHS CLINICAL REPORTING 13.0
Checking Install for Package IHS CLINICAL REPORTING 13.0
Will first run the Environment Check Routine, BGP3POS

Install Questions for IHS CLINICAL REPORTING 13.0

Incoming Files:

  90241.01 BGP CONTROL FILE (including data)
Note: You already have the 'BGP CONTROL FILE' File.
I will REPLACE your data with mine.

  90241.02 BGP SITE PARAMETERS
Note: You already have the 'BGP SITE PARAMETERS' File.

  90241.03 BGP SUMMARY CATEGORIES (including data)
Note: You already have the 'BGP SUMMARY CATEGORIES' File.
I will REPLACE your data with mine.

  90241.04 BGP CLIENT AUTOMATED GPRA EXTRACT PARAMS
Note: You already have the 'BGP CLIENT AUTOMATED GPRA EXTRACT PARAMS' File.

  90245      BGP AREA AUTOMATED GPRA PARAMS
Note: You already have the 'BGP AREA AUTOMATED GPRA PARAMS' File.

  90245.1    BGP GPRA FLAT FILE DATA
Note: You already have the 'BGP GPRA FLAT FILE DATA' File.

  90549.19   BGP 13 GUI REPORT OUTPUT
Note: You already have the 'BGP 13 GUI REPORT OUTPUT' File.

  90550.01   BGP 13 MEASURES (including data)
Note: You already have the 'BGP 13 MEASURES' File.
I will REPLACE your data with mine.

  90550.02   BGP 13 INDIVIDUAL MEASURES (including data)
Note: You already have the 'BGP 13 INDIVIDUAL MEASURES' File.
I will REPLACE your data with mine.

  90550.03   BGP 13 DATA CURRENT
Note: You already have the 'BGP 13 DATA CURRENT' File.

  90550.04   BGP 13 DATA PREVIOUS
Note: You already have the 'BGP 13 DATA PREVIOUS' File.

  90550.05   BGP 13 DATA BASELINE
Note: You already have the 'BGP 13 DATA BASELINE' File.

  90550.06   BGP 13 NATIONAL PATIENT LISTS (including data)
Note: You already have the 'BGP 13 NATIONAL PATIENT LISTS' File.
```

I will REPLACE your data with mine.

90550.08 BGP 13 TAXONOMIES (including data)

Note: You already have the 'BGP 13 TAXONOMIES' File.

I will REPLACE your data with mine.

90550.09 BGP 13 TAXONOMY TEMP (including data)

Note: You already have the 'BGP 13 TAXONOMY TEMP' File.

I will REPLACE your data with mine.

90550.1 BGP 13 MEASURE GROUPS (including data)

Note: You already have the 'BGP 13 MEASURE GROUPS' File.

I will OVERWRITE your data with mine.

90550.11 BGP 13 XP OUTPUT

Note: You already have the 'BGP 13 XP OUTPUT' File.

90550.12 BGP 13 PATIENT ED DATA CURRENT

Note: You already have the 'BGP 13 PATIENT ED DATA CURRENT' File.

90550.13 BGP 13 PATIENT ED DATA PREVIOUS

Note: You already have the 'BGP 13 PATIENT ED DATA PREVIOUS' File.

90550.14 BGP 13 PATIENT ED DATA BASELINE

Note: You already have the 'BGP 13 PATIENT ED DATA BASELINE' File.

90550.15 BGP 13 PAT ED MEASURES (including data)

Note: You already have the 'BGP 13 PAT ED MEASURES' File.

I will OVERWRITE your data with mine.

90550.17 BGP 13 ICARE GROUPS (including data)

Note: You already have the 'BGP 13 ICARE GROUPS' File.

I will OVERWRITE your data with mine.

90550.18 BGP 13 ICARE CATEGORIES (including data)

Note: You already have the 'BGP 13 ICARE CATEGORIES' File.

I will OVERWRITE your data with mine.

90551.02 BGP 13 ELDER INDIVIDUAL MEASURES (including data)

Note: You already have the 'BGP 13 ELDER INDIVIDUAL MEASURES' File.

I will OVERWRITE your data with mine.

90551.03 BGP 13 ELDER DATA CURRENT

Note: You already have the 'BGP 13 ELDER DATA CURRENT' File.

90551.04 BGP 13 ELDER DATA PREVIOUS

Note: You already have the 'BGP 13 ELDER DATA PREVIOUS' File.

90551.05 BGP 13 ELDER DATA BASELINE

Note: You already have the 'BGP 13 ELDER DATA BASELINE' File.

90551.06 BGP 13 ELDER MEASURES (including data)

Note: You already have the 'BGP 13 ELDER MEASURES' File.

I will OVERWRITE your data with mine.

Enter the Device you want to print the Install messages.

You can queue the install by enter a 'Q' at the device prompt.

Enter a '^' to abort the install.

```

DEVICE: HOME//    VIRTUAL
aaaaaaaaaaaaaaaaaaaaaaaaaaaaaaaaaaaaaaaaaaaaaaaaaaaaaaaaaaaaaaaaaaaaaaaaaaaaaaaa

  Install Started for IHS CLINICAL REPORTING 13.0 :
      Oct 24, 2012@12:52:42

Build Distribution Date: Oct 24, 2012

Installing Routines:
      Oct 24, 2012@12:52:46

Running Pre-Install Routine: PRE^BGP3POS

Installing Data Dictionaries: .....
Installing Data Dictionaries: .....
Installing Data Dictionaries: .....
Installing Data Dictionaries: .....
Installing Data Dictionaries: .....
Installing Data Dictionaries: .....
Installing Data Dictionaries: .....
      Oct 24, 2012@12:52:54.....

Installing Data:
      Oct 24, 2012@12:53:03

Installing PACKAGE COMPONENTS:

Installing SECURITY KEY

Installing INPUT TEMPLATE

Installing PROTOCOL

Installing REMOTE PROCEDURE

Installing LIST TEMPLATE

Installing OPTION
      Oct 24, 2012@12:53:07

Running Post-Install Routine: POST^BGP3POS
Updating [BGP ESRD PMS DXS] taxonomy...
Updating [BGP TOPICAL FLUORIDE DXS] taxonomy...
Updating [BGP HIGH RISK FLU DXS] taxonomy...
Updating [BGP HIGH RISK PNEUMO DXS] taxonomy...
Updating [BGP MMR CONTRAINDICATIONS] taxonomy...
Updating [BGP HYSTERECTOMY DXS] taxonomy...
Updating [BGP PAP ICDS] taxonomy...
Updating [BGP PAP SMEAR DXS] taxonomy...
Updating [BGP TOTAL COLECTOMY PROCS] taxonomy...
Updating [BGP MAJOR DEPRESSION (ADM)] taxonomy...
Updating [BGP HEDIS SKL MUSCLE RELAX NDC] taxonomy...
Updating [BGP HEDIS ANTICHOLINERGIC NDC] taxonomy...
Updating [BGP HEDIS ANTITHROMBOTIC NDC] taxonomy...
Updating [BGP HEDIS ANTI-INFECTIVE NDC] taxonomy...
Updating [BGP HEDIS CARDIOVASCULAR NDC] taxonomy...
Updating [BGP HEDIS CENTRAL NERVOUS NDC] taxonomy...
Updating [BGP HEDIS NONBENZODIAZ NDC] taxonomy...
Updating [BGP HEDIS ENDOCRINE NDC] taxonomy...

```



```

Updating [BGP HEDIS GASTROINTESTINAL NDC] taxonomy...
Updating [BGP HEDIS PAIN NDC] taxonomy...
Updating [BGP HPV LOINC CODES] taxonomy...
Updating [BGP HPV CPTS] taxonomy...
Updating [BGP HPV DXS] taxonomy...
Updating [BGP HIV TEST LOINC CODES] taxonomy...
Updating [BGP HIV-1 TEST LOINC CODES] taxonomy...
Updating [BGP HIV-2 TEST LOINC CODES] taxonomy...
Updating [BGP HEDIS ANTICHOLINERGIC NDC] taxonomy...
Updating [BGP HEPATITIS C DXS] taxonomy...
Updating [BGP HDL LOINC CODES] taxonomy...
Creating BGP CMS WARFARIN MEDS Taxonomy...
Creating BGP CMS ACEI MEDS Taxonomy...
Creating BGP CMS BETA BLOCKER MEDS Taxonomy...
Creating BGP CMS ANTIBIOTIC MEDS Taxonomy...
Creating BGP CMS ARB MEDS Taxonomy...
Creating DM AUDIT ASPIRIN DRUGS Taxonomy...
Creating BGP ANTI-PLATELET DRUGS Taxonomy...
Creating BGP HEDIS OSTEOPOROSIS DRUGS Taxonomy...
Creating BGP ASTHMA CONTROLLERS Taxonomy...
Creating BGP ASTHMA INHALED STEROIDS Taxonomy...
Creating BGP ASTHMA LEUKOTRIENE Taxonomy...
Creating BGP HEDIS ANTIDEPRESSANT MEDS Taxonomy...
Creating BGP RA OA NSAID MEDS Taxonomy...
Creating BGP RA GLUCOCORTICOIDS MEDS Taxonomy...
Creating BGP HEDIS ANTIBIOTICS MEDS Taxonomy...
Creating BGP HEDIS ASTHMA LEUK MEDS Taxonomy...
Creating BGP HEDIS ASTHMA MEDS Taxonomy...
Creating BGP HEDIS PRIMARY ASTHMA MEDS Taxonomy...
Creating BGP HEDIS ASTHMA INHALED MEDS Taxonomy...
Creating BGP HEDIS BETA BLOCKER MEDS Taxonomy...
Creating BGP RA IM GOLD MEDS Taxonomy...
Creating BGP RA AZATHIOPRINE MEDS Taxonomy...
Creating BGP RA LEFLUNOMIDE MEDS Taxonomy...
Creating BGP RA ORAL GOLD MEDS Taxonomy...
Creating BGP RA CYCLOSPORINE MEDS Taxonomy...
Creating BGP RA METHOTREXATE MEDS Taxonomy...
Creating BGP RA MYCOPHENOLATE MEDS Taxonomy...
Creating BGP RA PENICILLAMINE MEDS Taxonomy...
Creating BGP RA SULFASALAZINE MEDS Taxonomy...
Creating BGP CMS THROMBOLYTIC MEDS Taxonomy...
Creating BGP HEDIS ANTICHOLINERGIC MEDS Taxonomy...
Creating BGP HEDIS ANTITHROMBOTIC MEDS Taxonomy...
Creating BGP HEDIS ANTI-INFECTIVE MEDS Taxonomy...
Creating BGP HEDIS CARDIOVASCULAR MEDS Taxonomy...
Creating BGP HEDIS CENTRAL NERVOUS MEDS Taxonomy...
Creating BGP HEDIS NONBENZODIAZ MEDS Taxonomy...
Creating BGP HEDIS ENDOCRINE MEDS Taxonomy...
Creating BGP HEDIS GASTROINTESTINAL MED Taxonomy...
Creating BGP HEDIS PAIN MEDS Taxonomy...
Creating BGP HEDIS SKL MUSCLE RELAX MED Taxonomy...
Creating BGP HEDIS ACEI MEDS Taxonomy...
Creating BGP HEDIS ARB MEDS Taxonomy...
Creating BGP HEDIS STATIN MEDS Taxonomy...
Creating BGP PQA BETA BLOCKER MEDS Taxonomy...
Creating BGP PQA RASA MEDS Taxonomy...
Creating BGP PQA CCB MEDS Taxonomy...
Creating BGP PQA BIGUANIDE MEDS Taxonomy...
Creating BGP PQA SULFONYLUREA MEDS Taxonomy...

```

```

Creating BGP PQA THIAZOLIDINEDIONE MEDS Taxonomy...
Creating BGP PQA STATIN MEDS Taxonomy...
Creating BGP PQA ANTIRETROVIRAL MEDS Taxonomy...
Creating BGP PQA SABA MEDS Taxonomy...
Creating BGP PQA CONTROLLER MEDS Taxonomy...
Creating BGP ASTHMA LABA MEDS Taxonomy...
Creating BGP CMS SMOKING CESSATION MEDS Taxonomy...
Creating BGP CMS SYSTEMIC CHEMO MEDS Taxonomy...
Creating BGP CMS IMMUNOSUPPRESSIVE MEDS Taxonomy...
Creating/Updating DENTAL EXAM ADA Codes Taxonomy...
Creating/Updating PRENATAL DENTAL EXAM ADA Codes Taxonomy...

Updating Routine file...

Updating KIDS files...

IHS CLINICAL REPORTING 13.0 Installed.
      Oct 24, 2012@12:53:38

Not a VA primary domain

Install Completed

```

Figure 4-1: Sample installation for IHS Clinical Reporting package 13.0

## 4.2 Sample Installation of the CRS GUI

1. Double click **bgp\_1300setup.exe** to launch the Visual CRS Setup Wizard (Figure 4-2):



Figure 4-2: Visual CRS Setup Wizard, Welcome dialog

2. Click **Next** to display the Select Installation Folder dialog (Figure 4-3):

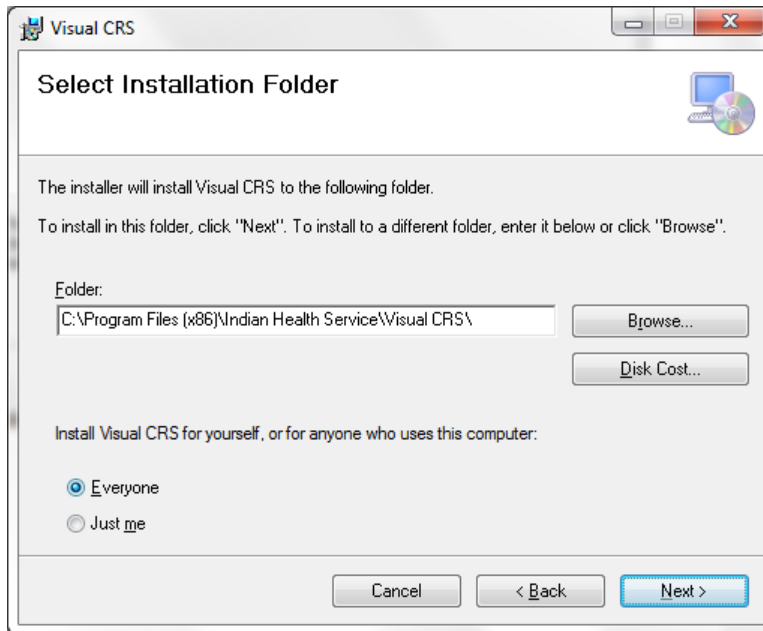


Figure 4-3: Visual CRS Setup Wizard, Select Installation Folder dialog

3. Click **Next** to display the Confirm Installation dialog (Figure 4-4):

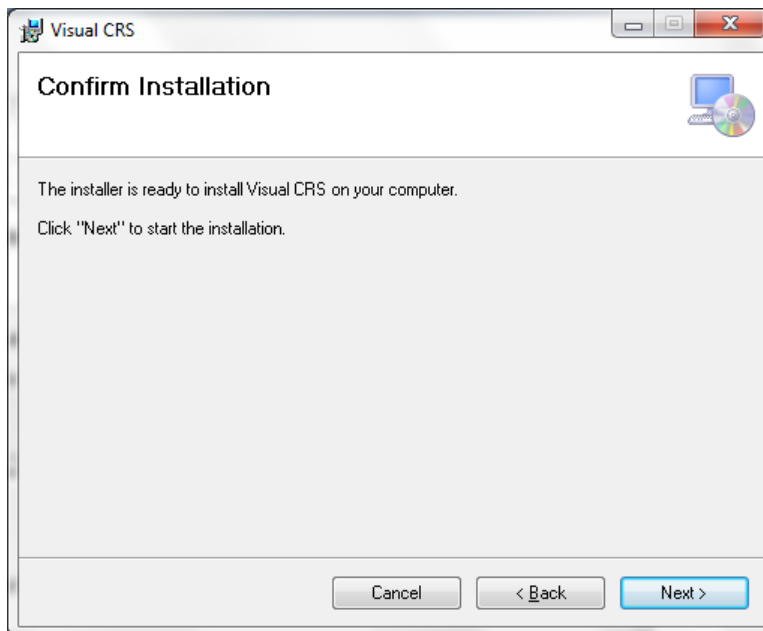


Figure 4-4: Visual CRS Setup Wizard, Confirm Installation dialog

- Click **Next** to display the Installing Visual CRS dialog (Figure 4-5):

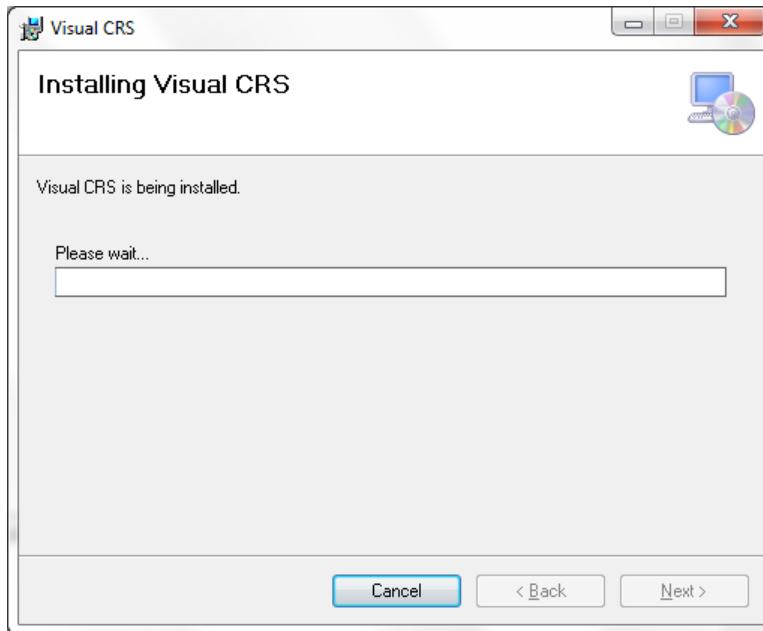


Figure 4-5: Visual CRS Setup Wizard, Installing Visual CRS dialog

- Wait while the application is installed. When the installation is complete, the Installation Complete dialog (Figure 4-6) displays:

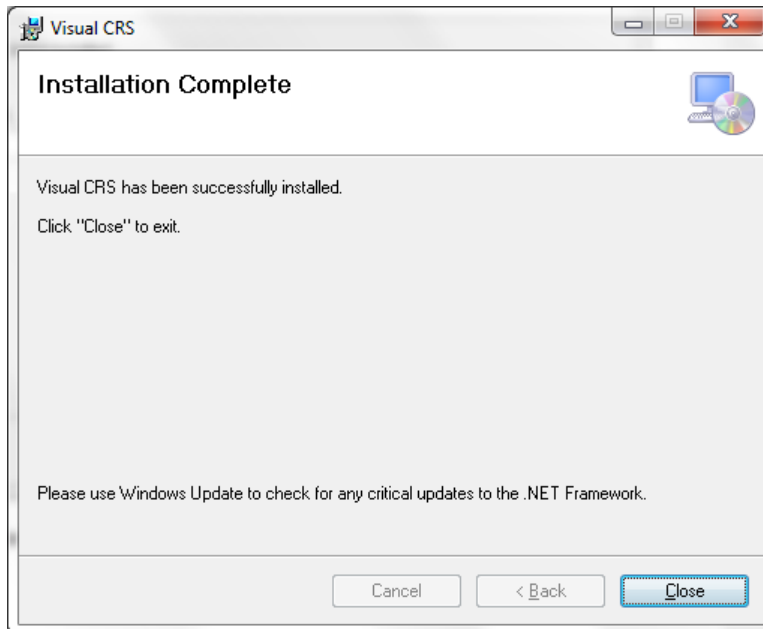


Figure 4-6: Visual CRS Setup Wizard, Installation Complete dialog

- Click **Close**.

A desktop shortcut named Visual CRS should now be available. Refer to the user manual for instructions on use of the Visual CRS application.

## Acronym List

<b>CRS</b>	Clinical Reporting System
<b>GPRA</b>	Government Performance and Results Act
<b>GUI</b>	Graphical User Interface
<b>IHS</b>	Indian Health Service
<b>RPMS</b>	Resource and Patient Management System

## Contact Information

If you have any questions or comments regarding this distribution, please contact the OIT Help Desk (IHS).

**Phone:** (505) 248-4371 or (888) 830-7280 (toll free)

**Fax:** (505) 248-4363

**Web:** <http://www.ihs.gov/GeneralWeb/HelpCenter/Helpdesk/index.cfm>

**Email:** [support@ihs.gov](mailto:support@ihs.gov)