



RESOURCE AND PATIENT MANAGEMENT SYSTEM

# **Clinical Reporting System**

(BGP)

## **Installation Guide and Release Notes**

Version 15.1  
May 2015

Office of Information Technology  
Division of Information Technology

# Table of Contents

<b>1.0</b>	<b>Introduction.....</b>	<b>1</b>
1.1	Key Changes in v15.1.....	1
1.1.1	Logic Changes to National GPRA/GPRAMA Report Measures.....	1
1.1.2	Key Logic Changes to Non-GPRA Measures.....	3
1.1.3	Additional Key Enhancements and Revisions .....	3
<b>2.0</b>	<b>Installation Notes.....</b>	<b>4</b>
2.1	CRS Distribution Contents and Required Resources .....	4
2.1.1	Contents of Distribution .....	4
2.1.2	Required Resources.....	4
2.2	Visual CRS (GUI) Distribution Contents and Required Resources .....	5
2.2.1	Contents of GUI CRS Distribution .....	5
2.2.2	Required Resources for GUI CRS.....	5
2.3	Before You Begin.....	5
<b>3.0</b>	<b>Installation Instructions .....</b>	<b>6</b>
3.1	Installation of the CRS GUI.....	7
3.1.1	Installation on the RPMS server .....	7
3.1.2	Installation on each user's (client) PC .....	8
<b>4.0</b>	<b>Sample Installations.....</b>	<b>9</b>
4.1	Sample Installation of CRS on RPMS Server .....	9
4.2	Sample Installation of the CRS GUI.....	16
	<b>Acronym List .....</b>	<b>19</b>
	<b>Contact Information .....</b>	<b>20</b>

## Preface

The Government Performance and Results Act (GPRA) requires federal agencies to report annually on how the agency measured against the performance targets set in its annual plan. The Indian Health Service (IHS) GPRA measures include clinical prevention and treatment, quality of care, infrastructure, and administrative efficiency functions.

The IHS Clinical Reporting System (CRS) is a Resource and Patient Management System (RPMS) software application designed for national reporting, as well as Area Office and local monitoring of clinical GPRA and developmental measures. CRS was first released for FY 2002 performance measures (as GPRA+) and is based on a design by the Aberdeen Area Office (GPRA2000).

This manual provides installation instructions for CRS Version 15.1. Version 15.1 adds fiscal year (FY) 2015 clinical performance measures to existing FY 2002 through FY 2014 measures.

CRS is the reporting tool used by the IHS Office of Planning and Evaluation to collect and report clinical performance results annually to the Department of Health and Human Services and to Congress.

Each year, an updated version of CRS software is released to reflect changes in the logic descriptions of the different denominators and numerators. Additional performance measures may also be added. Local facilities can run reports as often as they want and can also use CRS to transmit data to their Area Office. The Area Office can use CRS to produce an aggregated Area Office report for either annual GPRA or Area Office director performance reports.

CRS produces reports on demand from local RPMS databases for both GPRA and developmental clinical performance measures that are based on RPMS data, thus eliminating the need for manual chart audits for evaluating and reporting clinical measures.

To produce reports with comparable data across every facility, the GPRA measures definitions were “translated” into programming code with the assistance of clinical subject matter experts. CRS uses predefined taxonomies to find data items in the RPMS Patient Care Component to determine if a patient meets the performance measure criteria. Taxonomies contain groups of codes (e.g., diagnoses or procedures) or site-specific terms. Each performance measure topic has one or more defined denominators and numerators.

Administrative and clinical users can review individual or all measures at any time to:

- Identify potential data issues in their RPMS; for example, missing or incorrect data.
- Monitor their site's performance against past national performance and upcoming agency goals.
- Identify specific areas where the facility is not meeting the measure in order to initiate business process or other changes.
- Quickly measure impact of process changes on performance measures.
- Identify IHS Area Offices meeting or exceeding measures to provide lessons learned.

Users of the RPMS CRS include:

- Area Office and site quality improvement staff.
- Compliance officers.
- GPRA coordinators.
- Clinical staff, such as physicians, nurses, nurse practitioners, and other providers.
- Area Office directors.
- Any staff involved with quality assurance initiatives.
- Staff who run the various CRS reports.

## 1.0 Introduction

This manual provides user instructions on installing Version 15.1 of the Clinical Reporting System (CRS). The manual provides installation instructions for both the RPMS server side software and the Visual CRS graphical user interface (GUI).

### 1.1 Key Changes in v15.1

#### 1.1.1 Logic Changes to National GPRA/GPRAMA Report Measures

- GPRA Developmental Measures:
  - Added the following new GPRA Developmental measures:
    - Influenza (Ages 6 months through 17 years and age 18 and older)
    - Adult Immunizations (Added combination measures that do not include influenza and a new pneumococcal measure that includes pneumococcal conjugate)
  - Removed Cancer Screening: Mammogram Rates topic.
  - Changed Alcohol Screening denominator to Active Clinical patients age 14 through 46, and updated numerator to include patient education.
  - Changed Intimate Partner (Domestic) Violence Screening denominator to Active Clinical patients age 14 through 46, and updated numerator to include patient education.
  - Updated codes in the following measures: Adult Immunizations; Childhood Immunizations; Comprehensive Cancer Screening; Depression Screening; Hepatitis C Screening; Visit Statistics.
- Diabetes: Glycemic Control: Created new measure with User Population denominator.
- Diabetes: Blood Pressure Control: Created new measure with User Population denominator.
- Diabetes: LDL Assessment:
  - Added POV code V77.91 to LDL definition.
  - Created new measure with User Population denominator.
- Diabetes: Nephropathy Assessment: Created new measure with User Population denominator.
- Diabetic Retinopathy:
  - Changed “JVN” to “validated teleretinal”.

- Created new measure with User Population denominator.
- Dental Sealants:
  - Added new age breakdown of 2 through 5.
  - Added ADA code 1353 and CPT code D1353 to Dental Sealant definition.
  - Updated logic for the count measure to only count one dental sealant repair per tooth.
- Influenza:
  - Updated age range from less than 18 to 6 months through 17 years.
  - Added new age range for ages 18 and older.
  - Added CVX code 166 to Influenza and NMI definitions.
  - Added CPT code 90630 to Influenza and NMI definitions.
  - Created new measure with User Population denominator.
- Adult Immunizations:
  - Added combination measures that do not include influenza.
  - Added CVX code 166 to Influenza and NMI definitions.
  - Added CPT code 90630 to Influenza and NMI definitions.
  - Changed "pneumovax" to "pneumococcal vaccine".
  - Created new measure with User Population denominator.
- Childhood Immunizations:
  - Added CVX code 166 to Influenza and NMI definitions.
  - Added CPT code 90630 to Influenza and NMI definitions.
  - Created new measure with User Population denominator.
- Cancer Screening: Pap Smear Rates:
  - Removed POV codes V67.01 and V76.47 from Hysterectomy definition.
  - Created new measure with User Population denominator.
- Cancer Screening: Mammogram Rates:
  - Removed measures with age range of 52 through 74.
  - Created new measure with User Population denominator.
- Colorectal Cancer Screening: Created new measure with User Population denominator.
- Tobacco Use and Exposure Assessment: Added ICD-10 code Z72.0 to Tobacco Screening and Tobacco User definitions.
- Tobacco Cessation:

- Added ICD-10 code Z72.0 to Tobacco User definition.
- Created new measure with User Population denominator.
- Alcohol Screening (FAS Prevention):
  - Added BHS Problem Codes 10, 12.1, 14.2, 17.1, 18.1, 20.1, and 22.1 to Alcohol-related Diagnosis or Procedure definition.
  - Created new measure with User Population denominator.
- Intimate Partner (Domestic) Violence Screening: Created new measure with User Population denominator.
- Depression Screening:
  - Added new measure and corresponding logic for patients screened in a Behavioral Health clinic.
  - Added CPT codes 3725F and G0444 to Depression Screening definition.
  - Created new measure with User Population denominator.
- Childhood Weight Control: Created new measure with User Population denominator.
- Comprehensive CVD-Related Assessment:
  - Added ICD-10 code Z72.0 to Tobacco Screening definition.
  - Added POV code V77.91 to LDL definition.
  - Added CPT codes 3725F and G0444 to Depression Screening definition.
  - Created new measure with User Population denominator.
- HIV Screening: Created new measure with User Population denominator.
- Breastfeeding Rates: Created new measure with User Population denominator.

### 1.1.2 Key Logic Changes to Non-GPRA Measures

For key logic changes to non-GPRA measures, please refer to the *CRS 2015 (Version 15.1) Selected Measures Report Performance Measure List and Definitions* document located on the CRS Web site at <http://www.ihs.gov/crs/documents/crsv15/>.

### 1.1.3 Additional Key Enhancements and Revisions

- Removed the MFI field.

## 2.0 Installation Notes

**Note:** Read the entire Notes File prior to attempting any installation.

**Prefix:** BGP

**Current Version:** 15.1

**Note:** This distribution of the CRS contains Version 15.1 of CRS and the GUI front end to the CRS system. The server-side (i.e. “roll-and-scroll” or backend) version 15.1 of the package can be installed alone or both the GUI and the server-side versions can be installed. Currently, there is no requirement to install the GUI.  
Please install version 15.1 of CRS (bgp\_1510.k) at all sites regardless of whether the site opts to install and use the GUI portion of the package. Version 15.1 of CRS and the GUI have different requirements so please take note of the requirements section for each piece of the software.

## 2.1 CRS Distribution Contents and Required Resources

### 2.1.1 Contents of Distribution

File	Description
bgp_1510.k	Kernel Installation and Distribution System (KIDS) file containing software
bgp_151i.pdf	Installation guide in PDF format (this manual)
bgp_151t.pdf	Technical Manual in PDF format
bgp_151u.pdf	User Manual in PDF format
bgp_151u_logicselected.pdf	CRS Clinical Performance Measure Logic Manual in PDF format
bgp_151u_visual.pdf	Visual CRS User Manual in PDF format
bgp_1510client.zip	Visual CRS software for Client's PC

### 2.1.2 Required Resources

IHS Clinical Reporting System version 15.0 must be installed.



## 2.2 Visual CRS (GUI) Distribution Contents and Required Resources

### 2.2.1 Contents of GUI CRS Distribution

- bgp\_1510client.zip.

The following two files are contained in the zip file:

- bgp\_1510setup.exe.
- bgp\_1510.msi.

### 2.2.2 Required Resources for GUI CRS

Additional requirements for installing and using Visual CRS on a client's PC:

- *On the RPMS Server:*
  - BMX v4.0.
  - IHS Clinical Reporting System v15.1.
- *On the Client (User's) PC:*
  - Windows XP Service Pack 3 or higher.
  - Microsoft Office 2003 or later.
  - .NET Framework v4.0.
  - If the CRS GUI is not going to be installed, ignore these requirements.
  - If the .NET Framework v4.0 is not installed it will automatically be downloaded and installed when the client installation is started.

## 2.3 Before You Begin

1. Make a copy of this distribution for offline storage.
2. Print all notes/readme files.
3. Create a printed audit trail, in case there are any problems with the installation.

To capture terminal output during the installation, use an auxport printer attached to the terminal on which the installation is being performed.

## 3.0 Installation Instructions

**Note:** This installation is a KIDS install. For any questions on how to do a KIDS installation, please contact your Area Office information systems support personnel.

In all UCIs running the IHS CRS:

1. Ensure that users are unable to use the CRS for the duration of this installation.
2. Save all routines (^%RO (CACHE) in the BGP5\* namespace for use in returning to the prior existing version, if needed.

**Note:** If no problems are noted with the new installation, remove saved routines from your system 7–10 days after this install.

3. Install bgp\_1510.k. This file is the KIDS file for the IHS CRS:
  - a. Load the distribution into KIDS using **Option 1** on the **KIDS Installation menu**. The distribution was released in a file named bgp\_1510.k
  - b. Verify the load using **Option 2** on the **KIDS Installation menu**.
  - c. Consider using **Options 3** and **4** on the **KIDS Installation menu** to print and compare the Transport global.
  - d. Install the distribution using option 6 on the Installation menu.
  - e. For results, use the **KIDS Install File Print** option to view/print the IHS CLINICAL REPORTING SYSTEM V15.1 entry.

**Note:** For assistance with a KIDS install, call your Area Office support personnel.

4. After the install completes, assign security keys, as appropriate, using the following table:

Name	Descriptive Name	Description
BGPZAREA	BGP Area Report	This key unlocks the Area Office report options on the main BGPMENU. Note: This key should be assigned <i>only</i> at the Area Office level.
BGPZMENU	BGP Main Menu–CRS	This key unlocks the main CRS menu. It should be assigned to all users who need to run GPRA/CRS reports.
BGPZ PATIENT LISTS	BGP Patient Lists	This key allows the holder to obtain patient lists. The patient lists contain sensitive patient/clinical information. This key should be given <i>only</i> to those users who have a need for such information.
BGPZ SITE PARAMETERS	BGP Site Parameters	This key should be given to those with authority to update the site parameters.
BGPZ TAXONOMY EDIT	BGP Taxonomy Edit	This key should be given <i>only</i> to users who will need to update taxonomies.

## 3.1 Installation of the CRS GUI

There are two parts to the CRS GUI install: installation on the RPMS server and installation on the local (client) PC. See the steps below for installation instructions.

### 3.1.1 Installation on the RPMS server

1. Make sure BMX v4.0 has been installed in RPMS on the RPMS Server.
2. Make sure CRS v15.1 has been installed in RPMS on the RPMS server. (See instructions above.)

**Note:** If a previous version of Visual CRS is being used you will not need to perform Steps 3 and 4. If this is the first time Visual CRS is being used perform Steps 3 and 4.

3. Assign option BGPGRPC as a secondary menu option with a synonym of **BGPG** for each user.

4. Assign option **BMXRPC** as a secondary menu option with a synonym of **BMX** for each user.

### 3.1.2 Installation on each user's (client) PC

1. Place **bgp\_1510client.zip** into a directory of your choice and unzip the file. There are two files included in the zip file: **bgp\_1510.msi** and **bgp\_1510setup.exe**.
2. If a previous version of the Visual CRS product is installed it will need to be removed. Go to the **Start** menu. Then go to **Control Panel** then click **Add/Remove Programs** and select and remove **Visual CRS**.
3. Double click the **bgp\_1510setup.exe** file that was distributed with Visual CRS. If asked, accept the License Agreement and follow the instructions for downloading and installing Microsoft .Net Framework v4.0 (this will only occur if the most current version of Microsoft.Net Framework v4.0 is not on the local PC). This step takes approximately 20-30 minutes over a DSL connection.
4. Follow the prompts on the **Visual CRS Setup Screens** and accept all of the defaults.
5. Double click the **Visual CRS** shortcut that appears on the desktop.
6. If this is the first install you will need to add a new connection. Please refer to the **BMX 4.0 User Manual** for instructions.
7. When the **RPMS Login** window appears, enter your RPMS access and verify codes, and then click **OK**.
8. If data for multiple facilities is stored on the same RPMS database, the **Select Division** window is displayed. Select a Division, and then click **OK**.
9. You are now running the Visual CRS software.

## 4.0 Sample Installations

### 4.1 Sample Installation of CRS on RPMS Server

```

DEVA>D ^XPDKRN

KIDS 8.0

Select KIDS OPTION: ?
  Answer with KIDS OPTION NUMBER, or NAME
  Choose from:
  1          LOAD A DISTRIBUTION
  2          VERIFY CHECKSUMS IN TRANSPORT GLOBAL
  3          PRINT TRANSPORT GLOBAL
  4          COMPARE TRANSPORT GLOBAL TO CURRENT SYSTEM
  5          BACKUP A TRANSPORT GLOBAL
  6          INSTALL PACKAGE(S)
  7          RESTART INSTALL OF PACKAGE(S)
  8          UNLOAD A DISTRIBUTION

Select KIDS OPTION: 1  LOAD A DISTRIBUTION
Enter a Host File: X:\export\bgp_1510.k

KIDS Distribution saved on Mar 24, 2015@11:41:43
Comment: IHS Clinical Reporting v15.1

This Distribution contains Transport Globals for the following Package(s):
Build IHS CLINICAL REPORTING 15.1 has been loaded before, here is when:
  IHS CLINICAL REPORTING 15.1  Install Completed
                                was loaded on Feb 27, 2015@07:40:22
OK to continue with Load? NO// y  YES

Distribution OK!

Want to Continue with Load? YES//
Loading Distribution...

Build IHS CLINICAL REPORTING 15.1 has an Environmental Check Routine
Want to RUN the Environment Check Routine? YES//
  IHS CLINICAL REPORTING 15.1
Will first run the Environment Check Routine, BGP5POS

Use INSTALL NAME: IHS CLINICAL REPORTING 15.1 to install this Distribution.

DEVA>d ^XPDKRN

KIDS 8.0

Select KIDS OPTION: INSTALL PACKAGE(S)
Select INSTALL NAME:  IHS CLINICAL REPORTING 15.1  Loaded from Distribution
  Loaded from Distribution  3/24/15@11:43:55
  => IHS Clinical Reporting v15.1  ;Created on Mar 24, 2015@11:41:43

This Distribution was loaded on Mar 24, 2015@11:43:55 with header of

```

```
IHS Clinical Reporting v15.1 ;Created on Mar 24, 2015@11:41:43
It consisted of the following Install(s):
IHS CLINICAL REPORTING 15.1
Checking Install for Package IHS CLINICAL REPORTING 15.1
Will first run the Environment Check Routine, BGP5POS

Install Questions for IHS CLINICAL REPORTING 15.1

Incoming Files:

90241.01 BGP CONTROL FILE (including data)
Note: You already have the 'BGP CONTROL FILE' File.
I will REPLACE your data with mine.

90241.02 BGP SITE PARAMETERS
Note: You already have the 'BGP SITE PARAMETERS' File.

90241.03 BGP SUMMARY CATEGORIES (including data)
Note: You already have the 'BGP SUMMARY CATEGORIES' File.
I will REPLACE your data with mine.

90241.04 BGP CLIENT AUTOMATED GPRA EXTRACT PARAMS
Note: You already have the 'BGP CLIENT AUTOMATED GPRA EXTRACT PARAMS' File.

90245 BGP AREA AUTOMATED GPRA PARAMS
Note: You already have the 'BGP AREA AUTOMATED GPRA PARAMS' File.

90245.1 BGP GPRA FLAT FILE DATA
Note: You already have the 'BGP GPRA FLAT FILE DATA' File.

90554.01 BGP 15 MEASURES (including data)
Note: You already have the 'BGP 15 MEASURES' File.
I will REPLACE your data with mine.

90554.02 BGP 15 INDIVIDUAL MEASURES (including data)
Note: You already have the 'BGP 15 INDIVIDUAL MEASURES' File.
I will REPLACE your data with mine.

90554.03 BGP 15 DATA CURRENT
Note: You already have the 'BGP 15 DATA CURRENT' File.

90554.04 BGP 15 DATA PREVIOUS
Note: You already have the 'BGP 15 DATA PREVIOUS' File.

90554.05 BGP 15 DATA BASELINE
Note: You already have the 'BGP 15 DATA BASELINE' File.
```

90554.06 BGP 15 NATIONAL PATIENT LISTS (including data)

Note: You already have the 'BGP 15 NATIONAL PATIENT LISTS' File.

I will REPLACE your data with mine.

90554.08 BGP 15 TAXONOMIES (including data)

Note: You already have the 'BGP 15 TAXONOMIES' File.

I will REPLACE your data with mine.

90554.09 BGP 15 TAXONOMY TEMP (including data)

Note: You already have the 'BGP 15 TAXONOMY TEMP' File.

I will REPLACE your data with mine.

90554.1 BGP 15 MEASURE GROUPS (including data)

Note: You already have the 'BGP 15 MEASURE GROUPS' File.

I will OVERWRITE your data with mine.

90554.12 BGP 15 PATIENT ED DATA CURRENT

Note: You already have the 'BGP 15 PATIENT ED DATA CURRENT' File.

90554.13 BGP 15 PATIENT ED DATA PREVIOUS

Note: You already have the 'BGP 15 PATIENT ED DATA PREVIOUS' File.

90554.14 BGP 15 PATIENT ED DATA BASELINE

Note: You already have the 'BGP 15 PATIENT ED DATA BASELINE' File.

90554.15 BGP 15 PAT ED MEASURES (including data)

Note: You already have the 'BGP 15 PAT ED MEASURES' File.

I will OVERWRITE your data with mine.

90554.17 BGP 15 ICARE GROUPS (including data)

Note: You already have the 'BGP 15 ICARE GROUPS' File.

I will OVERWRITE your data with mine.

90554.18 BGP 15 ICARE CATEGORIES (including data)

Note: You already have the 'BGP 15 ICARE CATEGORIES' File.

I will OVERWRITE your data with mine.

90554.19 BGP 15 GUI REPORT OUTPUT

Note: You already have the 'BGP 15 GUI REPORT OUTPUT' File.

90555.02 BGP 15 ELDER INDIVIDUAL MEASURES (including data)

Note: You already have the 'BGP 15 ELDER INDIVIDUAL MEASURES' File.

I will OVERWRITE your data with mine.

90555.03 BGP 15 ELDER DATA CURRENT

Note: You already have the 'BGP 15 ELDER DATA CURRENT' File.





```
Installing LIST TEMPLATE
```

```
Installing OPTION
```

```
Mar 24, 2015@11:45:05
```

```
Running Post-Install Routine: POST^BGP5POS
Updating [BGP LDL DXS] taxonomy...
Updating [BGP UNILATERAL FOOT AMP DXS] taxonomy...
Updating [BGP FLU IZ CVX CODES] taxonomy...
Updating [BGP CPT FLU] taxonomy...
Updating [BGP DEPRESSION SCREEN CPTS] taxonomy...
Updating [BGP BMD CPTS] taxonomy...
Updating [BGP PNEUMO CONJUGATE CPTS] taxonomy...
Updating [BGP ASTHMA LABA NDC] taxonomy...
Updating [BGP HEDIS ANTIBIOTICS NDC] taxonomy...
Updating [BGP HEDIS ANTIDEPRESSANT NDC] taxonomy...
Updating [BGP HEDIS ASTHMA NDC] taxonomy...
Updating [BGP HEDIS ASTHMA LEUK NDC] taxonomy...
Updating [BGP HEDIS ASTHMA INHALED NDC] taxonomy...
Updating [BGP HEDIS PRIMARY ASTHMA NDC] taxonomy...
Updating [BGP HEDIS ACEI NDC] taxonomy...
Updating [BGP HEDIS ARB NDC] taxonomy...
Updating [BGP HEDIS BETA BLOCKER NDC] taxonomy...
Updating [BGP HEDIS OSTEOPOROSIS NDC] taxonomy...
Updating [BGP CD4 LOINC CODES] taxonomy...
Updating [BGP CREATINE KINASE LOINC] taxonomy...
Updating [BGP ESTIMATED GFR LOINC] taxonomy...
Updating [BGP FOBT LOINC CODES] taxonomy...
Updating [BGP GLUCOSE LOINC] taxonomy...
Updating [BGP POTASSIUM LOINC] taxonomy...
Updating [BGP QUANT UACR LOINC] taxonomy...
BGP CMS ACEI MEDS CLASS
Creating BGP CMS ACEI MEDS Taxonomy...
BGP CMS BETA BLOCKER CLASS BGP CMS BETA BLOCKER NDC
Creating BGP CMS BETA BLOCKER MEDS Taxonomy...
BGP CMS ANTIBIOTICS MEDS CLASS
Creating BGP CMS ANTIBIOTIC MEDS Taxonomy...
BGP CMS ARB MEDS CLASS
Creating BGP CMS ARB MEDS Taxonomy...

Creating DM AUDIT ASPIRIN DRUGS Taxonomy...
BGP CMS ANTI-PLATELET CLASS
Creating BGP ANTI-PLATELET DRUGS Taxonomy...
  BGP HEDIS OSTEOPOROSIS NDC
Creating BGP HEDIS OSTEOPOROSIS DRUGS Taxonomy...
  BGP ASTHMA CONTROLLER NDC
Creating BGP ASTHMA CONTROLLERS Taxonomy...
  BGP ASTHMA INHALED STEROID VAP
Creating BGP ASTHMA INHALED STEROIDS Taxonomy...
  BGP ASTHMA LEUKOTRIENE NDC
Creating BGP ASTHMA LEUKOTRIENE Taxonomy...
  BGP HEDIS ANTIDEPRESSANT NDC
Creating BGP HEDIS ANTIDEPRESSANT MEDS Taxonomy...
  BGP RA OA NSAID VAPI
Creating BGP RA OA NSAID MEDS Taxonomy...
BGP RA GLUCOCORTICOIDS CLASS BGP RA GLUCOCORTICOIDS VAPI
Creating BGP RA GLUCOCORTICOIDS MEDS Taxonomy...
  BGP HEDIS ANTIBIOTICS NDC
```

```

Creating BGP HEDIS ANTIBIOTICS MEDS Taxonomy...
  BGP HEDIS ASTHMA LEUK NDC
Creating BGP HEDIS ASTHMA LEUK MEDS Taxonomy...
  BGP HEDIS ASTHMA NDC
Creating BGP HEDIS ASTHMA MEDS Taxonomy...
  BGP HEDIS PRIMARY ASTHMA NDC
Creating BGP HEDIS PRIMARY ASTHMA MEDS Taxonomy...
  BGP HEDIS ASTHMA INHALED NDC
Creating BGP HEDIS ASTHMA INHALED MEDS Taxonomy...
  BGP HEDIS BETA BLOCKER NDC
Creating BGP HEDIS BETA BLOCKER MEDS Taxonomy...
  BGP RA IM GOLD NDC
Creating BGP RA IM GOLD MEDS Taxonomy...
  BGP RA AZATHIOPRINE VAPI
Creating BGP RA AZATHIOPRINE MEDS Taxonomy...
  BGP RA LEFLUNOMIDE VAPI
Creating BGP RA LEFLUNOMIDE MEDS Taxonomy...
  BGP RA ORAL GOLD VAPI
Creating BGP RA ORAL GOLD MEDS Taxonomy...
  BGP RA CYCLOSPORINE NDC
Creating BGP RA CYCLOSPORINE MEDS Taxonomy...
  BGP RA METHOTREXATE VAPI
Creating BGP RA METHOTREXATE MEDS Taxonomy...
  BGP RA MYCOPHENOLATE VAPI
Creating BGP RA MYCOPHENOLATE MEDS Taxonomy...
  BGP RA PENICILLAMINE VAPI
Creating BGP RA PENICILLAMINE MEDS Taxonomy...
  BGP RA SULFASALAZINE VAPI
Creating BGP RA SULFASALAZINE MEDS Taxonomy...
BGP THROMBOLYTIC AGENT CLASS
Creating BGP CMS THROMBOLYTIC MEDS Taxonomy...
  BGP HEDIS ANTICHOLINERGIC NDC
Creating BGP HEDIS ANTICHOLINERGIC MEDS Taxonomy...
  BGP HEDIS ANTITHROMBOTIC NDC
Creating BGP HEDIS ANTITHROMBOTIC MEDS Taxonomy...
  BGP HEDIS ANTI-INFECTIVE NDC
Creating BGP HEDIS ANTI-INFECTIVE MEDS Taxonomy...
  BGP HEDIS CARDIOVASCULAR NDC
Creating BGP HEDIS CARDIOVASCULAR MEDS Taxonomy...
  BGP HEDIS CENTRAL NERVOUS NDC
Creating BGP HEDIS CENTRAL NERVOUS MEDS Taxonomy...
  BGP HEDIS NONBENZODIAZ NDC
Creating BGP HEDIS NONBENZODIAZ MEDS Taxonomy...
  BGP HEDIS ENDOCRINE NDC
Creating BGP HEDIS ENDOCRINE MEDS Taxonomy...
  BGP HEDIS GASTROINTESTINAL NDC
Creating BGP HEDIS GASTROINTESTINAL MED Taxonomy...
  BGP HEDIS PAIN NDC
Creating BGP HEDIS PAIN MEDS Taxonomy...
  BGP HEDIS SKL MUSCLE RELAX NDC
Creating BGP HEDIS SKL MUSCLE RELAX MED Taxonomy...
  BGP HEDIS ACEI NDC
Creating BGP HEDIS ACEI MEDS Taxonomy...
  BGP HEDIS ARB NDC
Creating BGP HEDIS ARB MEDS Taxonomy...
  BGP HEDIS STATIN NDC
Creating BGP HEDIS STATIN MEDS Taxonomy...
  BGP CMS WARFARIN VAPI
Creating BGP CMS WARFARIN MEDS Taxonomy...

```

```

BGP PQA BETA BLOCKER NDC
Creating BGP PQA BETA BLOCKER MEDS Taxonomy...
BGP PQA RASA NDC
Creating BGP PQA RASA MEDS Taxonomy...
BGP PQA CCB NDC
Creating BGP PQA CCB MEDS Taxonomy...
BGP PQA BIGUANIDE NDC
Creating BGP PQA BIGUANIDE MEDS Taxonomy...
BGP PQA SULFONYLUREA NDC
Creating BGP PQA SULFONYLUREA MEDS Taxonomy...
BGP PQA THIAZOLIDINEDIONE NDC
Creating BGP PQA THIAZOLIDINEDIONE MEDS Taxonomy...
BGP PQA STATIN NDC
Creating BGP PQA STATIN MEDS Taxonomy...
BGP PQA ANTIRETROVIRAL NDC
Creating BGP PQA ANTIRETROVIRAL MEDS Taxonomy...
BGP PQA SABA NDC
Creating BGP PQA SABA MEDS Taxonomy...
BGP PQA CONTROLLER NDC
Creating BGP PQA CONTROLLER MEDS Taxonomy...
BGP ASTHMA LABA NDC
Creating BGP ASTHMA LABA MEDS Taxonomy...
BGP PQA DPP IV NDC
Creating BGP PQA DPP IV MEDS Taxonomy...
BGP PQA DIABETES ALL CLASS NDC
Creating BGP PQA DIABETES ALL CLASS Taxonomy...
BGP PQA NON-WARF ANTICOAG NDC
Creating BGP PQA NON-WARF ANTICOAG MEDS Taxonomy...
BGP PQA WARFARIN NDC
Creating BGP PQA WARFARIN MEDS Taxonomy...
BGP PQA COPD NDC
Creating BGP PQA COPD MEDS Taxonomy...
BGP PQA ASTHMA INHALE STER NDC
Creating BGP PQA ASTHMA INHALE STER MED Taxonomy...
BGP PQA BENZODIAZ NDC
Creating BGP PQA BENZODIAZ MEDS Taxonomy...
BGP CMS SMOKING CESSATION VAPI
Creating BGP CMS SMOKING CESSATION MEDS Taxonomy...

Creating BGP CMS SYSTEMIC CHEMO MEDS Taxonomy...

Creating BGP CMS IMMUNOSUPPRESSIVE MEDS Taxonomy...
Creating/Updating DENTAL ANESTHESIA ADA Codes Taxonomy...
Creating/Updating SSC ADA Codes Taxonomy...

Updating Routine file...

Updating KIDS files...

IHS CLINICAL REPORTING 15.1 Installed.
    Mar 24, 2015@11:46:11

Not a VA primary domain

Install Completed

```

Figure 4-1: Sample installation for IHS Clinical Reporting package 15.1

## 4.2 Sample Installation of the CRS GUI

1. Double click **bgp\_1510setup.exe** to launch the **Visual CRS Setup Wizard** (Figure 4-2):

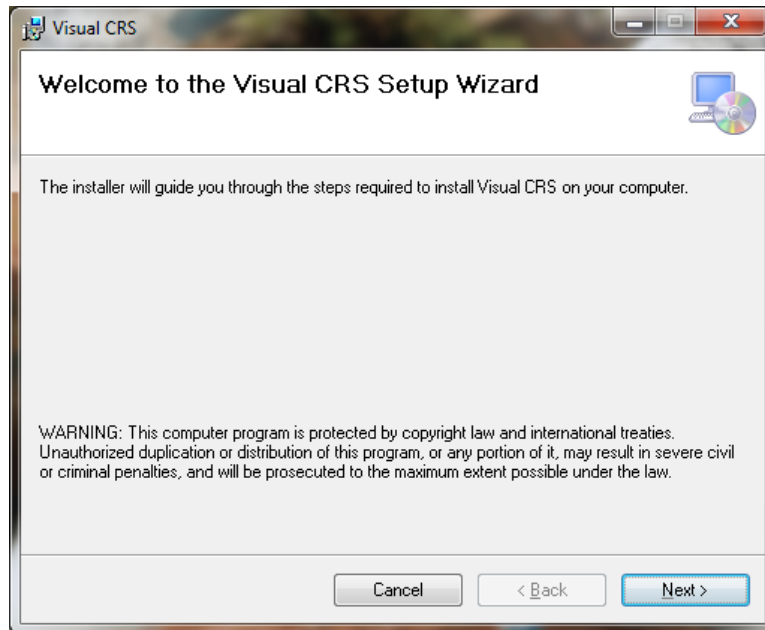


Figure 4-2: **Visual CRS Setup Wizard**, Welcome dialog

2. Click **Next** to display the **Select Installation Folder** dialog (Figure 4-3):

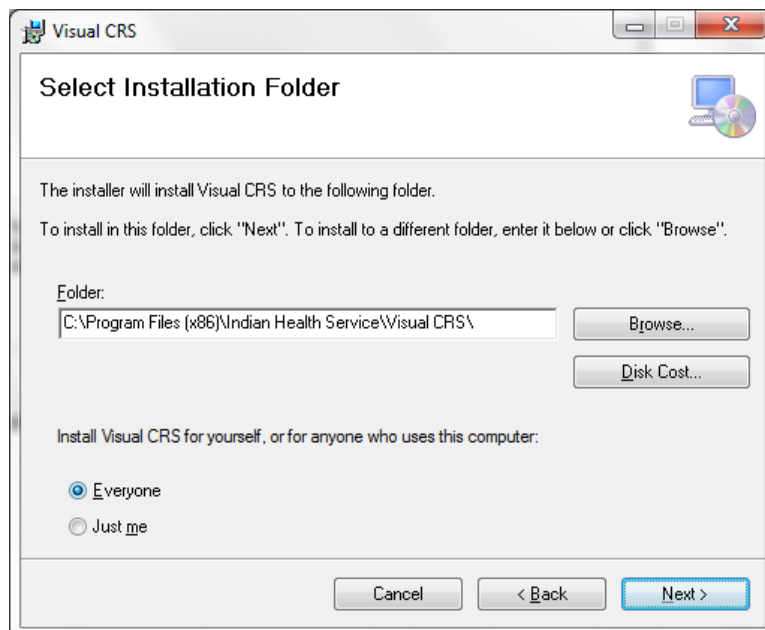


Figure 4-3: **Visual CRS Setup Wizard**, **Select Installation Folder** dialog

3. Click **Next** to display the **Confirm Installation** dialog (Figure 4-4):

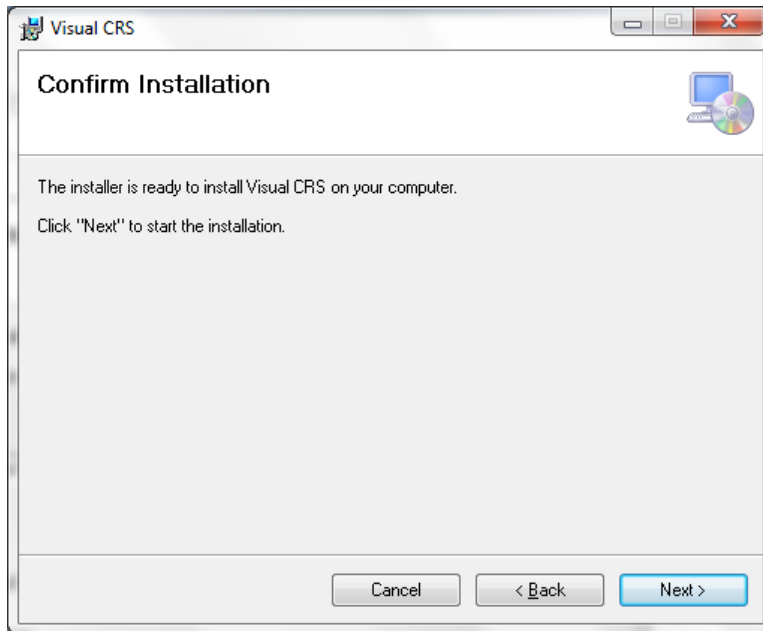


Figure 4-4: **Visual CRS Setup Wizard, Confirm Installation** dialog

4. Click **Next** to display the **Installing Visual CRS** dialog (Figure 4-5):

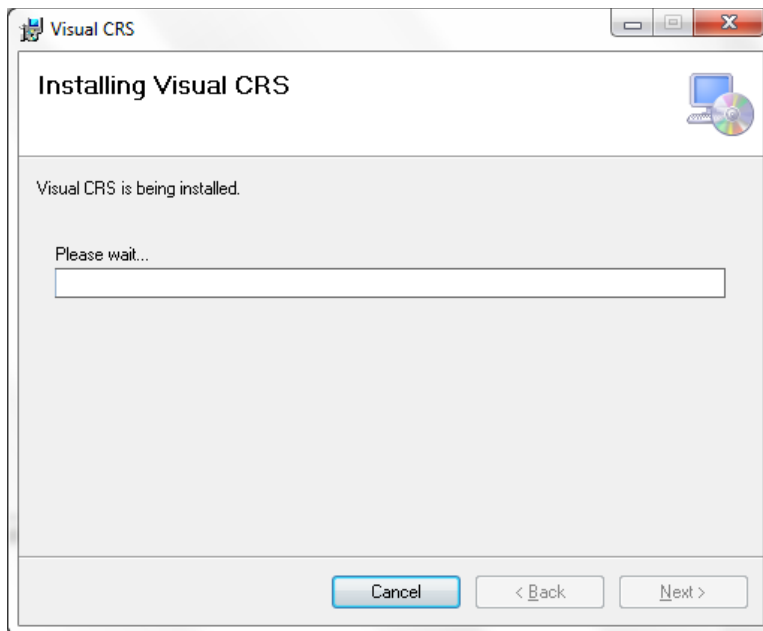


Figure 4-5: **Visual CRS Setup Wizard, Installing Visual CRS** dialog

5. Wait while the application is installed. When the installation is complete, the **Installation Complete** dialog (Figure 4-6) displays:

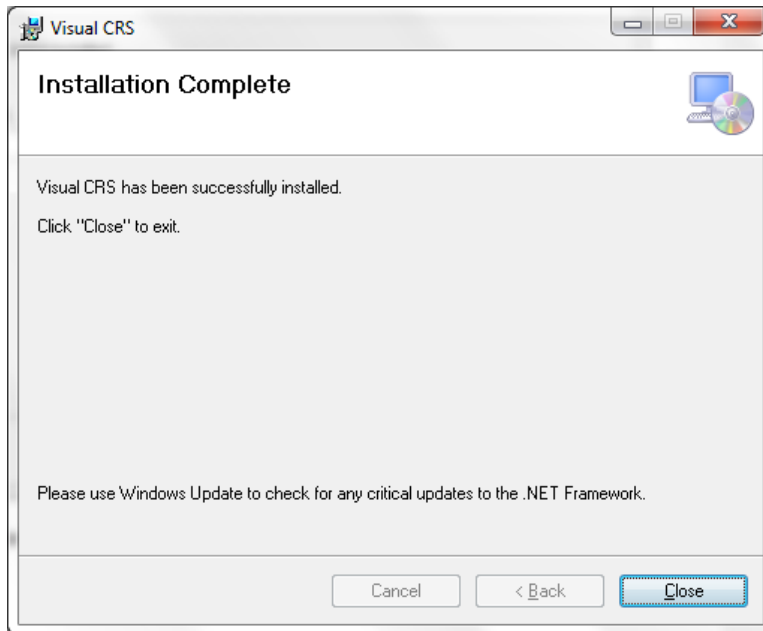


Figure 4-6: **Visual CRS Setup Wizard, Installation Complete** dialog

6. Click **Close**.

A desktop shortcut named Visual CRS should now be available. Refer to the user manual for instructions on use of the Visual CRS application.

## Acronym List

Acronym	Term Meaning
CRS	Clinical Reporting System
GPRA	Government Performance and Results Act
GUI	Graphical User Interface
IHS	Indian Health Service
RPMS	Resource and Patient Management System

## Contact Information

If you have any questions or comments regarding this distribution, please contact the OIT Help Desk (IHS).

**Phone:** (888) 830-7280 (toll free)

**Web:** <http://www.ihs.gov/helpdesk/>

**Email:** [support@ihs.gov](mailto:support@ihs.gov)