



RESOURCE AND PATIENT MANAGEMENT SYSTEM

Clinical Reporting System

(BGP)

Installation Guide and Release Notes

Version 19.0
March 2019

Office of Information Technology
Division of Information Technology

Table of Contents

1.0	Introduction.....	1
1.1	Key Changes in v19.0.....	1
1.1.1	Logic Changes to National GPRA/GPRAMA Report Measures.....	1
1.1.2	Key Logic Changes to Non-GPRA Measures.....	3
1.1.3	Additional Key Enhancements and Revisions	3
2.0	Installation Notes.....	4
2.1	CRS Distribution Contents and Required Resources	4
2.1.1	Contents of Distribution	4
2.1.2	Required Resources.....	4
2.2	Visual CRS (GUI) Distribution Contents and Required Resources.....	5
2.2.1	Contents of GUI CRS Distribution	5
2.2.2	Required Resources for GUI CRS.....	5
2.3	Before Installing.....	5
3.0	Installation Instructions	6
3.1	Installation of the CRS GUI.....	7
3.1.1	Installation on the RPMS Server.....	7
3.1.2	Installation on Each User's (Client) PC.....	7
4.0	Sample Installations.....	9
4.1	Sample Installation of CRS on RPMS Server	9
4.2	Sample Installation of the CRS GUI.....	17
	Acronym List	22
	Contact Information	23

Preface

The Government Performance and Results Act (GPRA) requires federal agencies to report annually on how the agency measured against the performance targets set in its annual plan. The Indian Health Service (IHS) GPRA measures include clinical prevention and treatment, quality of care, infrastructure, and administrative efficiency functions.

The IHS Clinical Reporting System (CRS) is a Resource and Patient Management System (RPMS) software application designed for national reporting, as well as Area Office and local monitoring of clinical GPRA and developmental measures. CRS was first released for FY 2002 performance measures (as GPRA+) and is based on a design by the Aberdeen Area Office (GPRA2000).

This manual provides installation instructions for CRS Version 19.0. Version 19.0 adds fiscal year (FY) 2018 clinical performance measures to existing FY 2002 through FY 2017 measures.

CRS is the reporting tool used by the IHS Office of Planning and Evaluation to collect and report clinical performance results annually to the Department of Health and Human Services and to Congress.

Each year, an updated version of CRS software is released to reflect changes in the logic descriptions of the different denominators and numerators. Additional performance measures may also be added. Local facilities can run reports as often as desired and can also use CRS to transmit data to their Area Office. The Area Office can use CRS to produce an aggregated Area Office report for either annual GPRA or Area Office director performance reports.

CRS produces reports on demand from local RPMS databases for both GPRA and developmental clinical performance measures that are based on RPMS data, thus eliminating the need for manual chart audits for evaluating and reporting clinical measures.

To produce reports with comparable data across every facility, the GPRA measures definitions were translated into programming code with the assistance of clinical subject matter experts. CRS uses predefined taxonomies to find data items in the RPMS Patient Care Component to determine if a patient meets the performance measure criteria. Taxonomies contain groups of codes (e.g., diagnoses or procedures) or site-specific terms. Each performance measure topic has one or more defined denominators and numerators.

Administrative and clinical users can review individual or all measures at any time to:

- Identify potential data issues in their RPMS, for example, missing or incorrect data.
- Monitor their site's performance against past national performance and upcoming agency goals.
- Identify specific areas where the facility is not meeting the measure in order to initiate business-process or other changes.
- Quickly measure impact of process changes on performance measures.
- Identify IHS Area Offices meeting or exceeding measures to provide lessons learned.

RPMS CRS Users include:

- Area Office and site quality improvement staff.
- Compliance officers.
- GPRA coordinators.
- Clinical staff, such as physicians, nurses, nurse practitioners, and other providers.
- Area Office directors.
- Any staff involved with quality assurance initiatives.
- Staff who run the various CRS reports.

1.0 Introduction

This manual provides user instructions on installing Version 19.0 of the Clinical Reporting System (CRS). The manual provides installation instructions for both the RPMS server-side software and the Visual CRS graphical user interface (GUI).

1.1 Key Changes in v19.0

1.1.1 Logic Changes to National GPRA/GPRAMA Report Measures

- GPRA Developmental Measures:
 - Added the following new GPRA Developmental measures:
 - Access to Dental Service – Carries Risk Assessment
 - Adult Immunizations – new age ranges for combination measures and new logic for Zoster/Shingrix
 - Suicide Risk Assessment
 - Removed the following GPRA Developmental measures:
 - Diabetes: Glycemic Control (moved to GPRA report)
 - Access to Dental Service – patients with dental visit (moved to GPRA report)
 - Access to Dental Service – stainless steel crown measure
 - Cancer Screening: Pap Smear Rates (moved to GPRA report)
 - Cancer Screening: Mammogram Rates (moved to GPRA report)
 - Tobacco Cessation (moved to GPRA report)
 - Updated codes and/or logic in the following measures: Diabetes: Blood Pressure Control; Access to Dental Service; Childhood Immunizations; Appropriate Medication Therapy After a Heart Attack; HIV Screening; HIV Quality of Care; Chlamydia Testing; Sexually Transmitted Infection (STI) Screening; Proportion of Days Covered by Medication Therapy; Concurrent Use of Opioids and Benzodiazepines; Use of Benzodiazepine Sedative Hypnotic Medications in the Elderly.
- Diabetes: Glycemic Control:
 - GPRA measure has been changed to Poor Control: A1c greater than (>) 9.0
 - Removed measure for Active Diabetics with good control.
 - Updated denominators to include patients with DM on the problem list.

- Diabetes: Blood Pressure Control:
 - Updated denominators to include patients with DM on the problem list.
- Statin Therapy to Reduce Cardiovascular Disease Risk in Patients with Diabetes:
 - Updated denominators to include patients with DM on the problem list.
 - Updated BGP PQA STATIN MEDS medication taxonomy.
- Diabetes: Nephropathy Assessment:
 - Updated denominators to include patients with DM on the problem list.
- Diabetic Retinopathy:
 - Updated denominators to include patients with DM on the problem list.
 - Added CPT codes 92018 and 92019 to other eye exam definition.
- Access to Dental Service:
 - Updated documented dental visit logic.
- Influenza:
 - Updated influenza definition to remove “not documented with” codes associated with POV V04.81.
 - Removed POV V06.6 from influenza definition.
- Adult Immunizations:
 - Updated influenza definition to remove “not documented with” codes associated with POV V04.81.
 - Removed POV V06.6 from influenza definition.
- Childhood Immunizations:
 - Updated GPRAMA measure to GPRA measure.
 - Updated SNOMED subsets to IPC SNOMED subsets.
 - Added SNOMED subsets to encephalopathy, immunodeficiency, HIV, and lymphoreticular cancer definitions.
- Cancer Screening: Pap Smear Rates:
 - Updated numerator to require Pap and HPV in past 5 years to be on the same day.
- Cancer Screening: Mammogram Rates:
 - Updated age range to 52–74.
- Tobacco Use and Exposure Assessment:
 - Removed cessation health factors from Tobacco User/Smoker/Smokeless/ENDS User definitions.
 - Added SNOMED codes to Tobacco Users and Smoker definitions.

- Added CPT codes G9016, 4000F, 4001F to tobacco screening and tobacco user definitions.
- Added CPT code G6016 to smoker definition.
- Tobacco Cessation:
 - Updated logic to previous GPRA Dev logic.
 - Updated logic to consider users in cessation as having quit tobacco use.
 - Added CPT code G9016 to tobacco cessation counseling definition.
- Alcohol Screening:
 - Added CPT code G0442 to alcohol screening definition.
- Intimate Partner (Domestic) Violence Screening
 - Updated GPRA measure to GPRAMA measure.
- Depression Screening:
 - Updated GPRAMA measure (patients 18 and older) to GPRA measure.
 - Added measures for Active Diabetic patients (from ONM report).
- Controlling High Blood Pressure – Million Hearts:
 - Removed requirement of HTN POV during report period.
- Statin Therapy for the Prevention and Treatment of Cardiovascular Disease:
 - Updated GPRAMA measure to GPRA measure.
 - Updated BGP PQA STATIN MEDS medication taxonomy.
- HIV Screening:
 - Added CPT codes 87901, 87906 to HIV Screening definition.

1.1.2 Key Logic Changes to Non-GPRA Measures

For key logic changes to non-GPRA measures, please refer to the *CRS 2019 (Version 19.0) Selected Measures Report Performance Measure List and Definitions* document located on the CRS Web site at

https://www.ihs.gov/crs/includes/themes/responsive2017/display_objects/documents/crsv19/SelectedMeasuresV190.pdf.

1.1.3 Additional Key Enhancements and Revisions

Removed Other National Measures Report.

2.0 Installation Notes

Note: Read the entire Notes file prior to attempting any installation.

Prefix: BGP

Current Version: 19.0

Note: This distribution of the CRS contains Version 19.0 of CRS and the GUI front end to the CRS system. The server-side (i.e., “roll-and-scroll” or backend) version 19.0 of the package can be installed alone or with both the GUI and the server-side versions. Currently, there is no requirement to install the GUI.

Please install version 19.0 of CRS (bgp_1900.k) at all sites regardless of whether the site opts to install and use the GUI portion of the package. Version 19.0 of CRS and the GUI have different requirements; please take note of the requirements section for each piece of the software.

2.1 CRS Distribution Contents and Required Resources

2.1.1 Contents of Distribution

Table 2-1: Contents of Distribution

File	Description
bgp_1900.k	Kernel Installation and Distribution System (KIDS) file containing software
bgp_190i.pdf	Installation guide in PDF format (this manual)
bgp_190t.pdf	Technical Manual in PDF format
bgp_190u.pdf	User Manual in PDF format
bgp_190u_visual.pdf	Visual CRS User Manual in PDF format
bgp_1900client.zip	Visual CRS software for Client's PC

2.1.2 Required Resources

IHS Clinical Reporting System version 18.1 must be installed (bgp_1810.k).

2.2 Visual CRS (GUI) Distribution Contents and Required Resources

2.2.1 Contents of GUI CRS Distribution

- bgp_1900client.zip.

The following two files are contained in the zip file:

- bgp_1900setup.exe.
- bgp_1900.msi.

2.2.2 Required Resources for GUI CRS

Additional requirements for installing and using Visual CRS on a client's PC:

- *On the RPMS Server:*
 - BMX v4.0.
 - IHS Clinical Reporting System v19.0.
- *On the Client (User's) PC:*
 - Windows XP Service Pack 3 or higher.
 - Microsoft Office 2003 or later.
 - .NET Framework v4.0.

Notes: If the CRS GUI will not be installed, ignore these requirements.

If the .NET Framework v4.0 is not installed, it will automatically be downloaded and installed when the client installation is started.

2.3 Before Installing

1. Make a copy of this distribution for offline storage.
2. Print all notes/readme files.
3. Create a printed audit trail, in case there are any problems with the installation.

To capture terminal output during the installation, use an auxport printer attached to the terminal on which the installation is being performed.

3.0 Installation Instructions

Note: This installation is a KIDS install. For any questions on how to do a KIDS installation, please contact your Area Office information systems support personnel.

In all UCIs running the IHS CRS:

1. Ensure that users are unable to use the CRS for the duration of this installation.
2. Save all routines (^%RO (CACHE) in the BGPL* namespace for use in returning to the prior existing version, if needed.

Note: If no problems are noted with the new installation, remove saved routines from your system seven to ten days after this install.

3. Install **bgp_1900.k**. This is the KIDS file for the IHS CRS:
 - a. Load the distribution into KIDS using **Option 1** on the **KIDS Installation menu**. The distribution was released in a file named **bgp_1900.k**.
 - b. Verify the load using **Option 2** on the **KIDS Installation** menu.
 - c. Consider using **Options 3** and **4** on the **KIDS Installation** menu to print and compare the Transport global.
 - d. Install the distribution using **option 6** on the **Installation** menu.
 - e. To see results, use the **KIDS Install File Print** option to view/print the IHS CLINICAL REPORTING SYSTEM V19.0 entry.

Note: For assistance with a KIDS install, call the Area Office support personnel.

4. After the install completes, assign security keys, as appropriate, using Table 3-1.

Table 3-1: Assigning security keys

Name	Descriptive Name	Description
BGPZAREA	BGP Area Report	This key unlocks the Area Office report options on the main BGPMENU. Note: This key should be assigned <i>only</i> at the Area Office level.
BGPZMENU	BGP Main Menu–CRS	This key unlocks the main CRS menu. It should be assigned to all users who need to run GPRA/CRS reports.

Name	Descriptive Name	Description
BGPZ PATIENT LISTS	BGP Patient Lists	This key allows the holder to obtain patient lists. The patient lists contain sensitive patient/clinical information. This key should be given <i>only</i> to those users who have a need for such information.
BGPZ SITE PARAMETERS	BGP Site Parameters	This key should be given to those with authority to update the site parameters.
BGPZ TAXONOMY EDIT	BGP Taxonomy Edit	This key should be given <i>only</i> to users who will need to update taxonomies.

3.1 Installation of the CRS GUI

There are two parts to the CRS GUI install: installation on the RPMS server and installation on the local (client) PC. See the steps below for installation instructions.

3.1.1 Installation on the RPMS Server

1. Make sure BMX v4.0 is installed in RPMS on the RPMS Server.
2. Make sure CRS v19.0 is installed in RPMS on the RPMS server. (See instructions above.)

Note: If a previous version of Visual CRS is being used you will not need to perform Steps 3 and 4. If this is the first time Visual CRS is being used, perform Steps 3 and 4.

3. Assign option **BGPGRPC** as a secondary menu option with a synonym of **BGPG** for each user.
4. Assign option **BMXRPC** as a secondary menu option with a synonym of **BMX** for each user.

3.1.2 Installation on Each User's (Client) PC

1. Place **bgp_1900client.zip** into a directory of your choice and unzip the file. There are two files included in the zip file: **bgp_1900.msi** and **bgp_1900setup.exe**.
2. Double-click the **bgp_1900setup.exe** file that was distributed with Visual CRS. If asked, accept the License Agreement and follow the instructions for downloading and installing Microsoft .Net Framework v4.0. This will only occur if the most current version of Microsoft.Net Framework v4.0 is not on the local PC. This step takes approximately 20–30 minutes over a DSL connection.

3. Follow the prompts on the **Visual CRS Setup Screens** and accept all of the defaults.
4. Double-click the **Visual CRS** shortcut that displays on the desktop.
5. If this is the first install, a new connection must be added. Please refer to the *BMX 4.0 User Manual* for instructions.
6. When the **RPMS Login** window displays, enter the RPMS access and verify codes and click **OK**.
7. If data for multiple facilities is stored on the same RPMS database, the **Select Division** window displays. Select a **Division** and click **OK**.
8. You are now running the Visual CRS software.

4.0 Sample Installations

4.1 Sample Installation of CRS on RPMS Server

```

CMBA>D ^XPKRNRN

KIDS 8.0

Select KIDS OPTION: 1  LOAD A DISTRIBUTION
Enter a Host File: c:\cmi\bgp_1900.k

KIDS Distribution saved on Dec 04, 2018@14:33:36
Comment: IHS CLINICAL REPORTING SYSTEM V19.0

This Distribution contains Transport Globals for the following Package(s):
Build IHS CLINICAL REPORTING 19.0 has been loaded before, here is when:
      IHS CLINICAL REPORTING 19.0   Install Completed
                                   was loaded on Dec 04, 2018@14:03:37
OK to continue with Load? NO// y  YES

Distribution OK!

Want to Continue with Load? YES//
Loading Distribution...

Build IHS CLINICAL REPORTING 19.0 has an Environmental Check Routine
Want to RUN the Environment Check Routine? YES//
      IHS CLINICAL REPORTING 19.0
Will first run the Environment Check Routine, BGPLPOS

                Patch "BGP*18.1*1" is installed.
Use INSTALL NAME: IHS CLINICAL REPORTING 19.0 to install this Distribution.

CMBA>D ^XPKRNRN

KIDS 8.0

Select KIDS OPTION: INSTALL PACKAGE(S)
Select INSTALL NAME:      IHS CLINICAL REPORTING 19.0      Loaded from Distribution
      Loaded from Distribution 12/4/18@14:15:31
      => IHS CLINICAL REPORTING SYSTEM V19   ;Created on Dec 04, 2018@14:33:36

This Distribution was loaded on Dec 04, 2018@14:15:31 with header of
      IHS CLINICAL REPORTING SYSTEM V19   ;Created on Dec 04, 2018@14:33:36
It consisted of the following Install(s):

```

```
IHS CLINICAL REPORTING 19.0
Checking Install for Package IHS CLINICAL REPORTING 19.0
Will first run the Environment Check Routine, BGPLPOS

          Patch "BGP*18.1*1" is installed.

Install Questions for IHS CLINICAL REPORTING 19.0

Incoming Files:

    90241.01  BGP CONTROL FILE  (including data)
Note:  You already have the 'BGP CONTROL FILE' File.
I will REPLACE your data with mine.

    90241.02  BGP SITE PARAMETERS
Note:  You already have the 'BGP SITE PARAMETERS' File.

    90241.03  BGP SUMMARY CATEGORIES  (including data)
Note:  You already have the 'BGP SUMMARY CATEGORIES' File.
I will REPLACE your data with mine.

    90245     BGP AREA AUTOMATED GPRA PARAMS
Note:  You already have the 'BGP AREA AUTOMATED GPRA PARAMS' File.

    90245.1   BGP GPRA FLAT FILE DATA
Note:  You already have the 'BGP GPRA FLAT FILE DATA' File.

    90562.01  BGP 19 MEASURES  (including data)
Note:  You already have the 'BGP 19 MEASURES' File.
I will REPLACE your data with mine.

    90562.02  BGP 19 INDIVIDUAL MEASURES  (including data)
Note:  You already have the 'BGP 19 INDIVIDUAL MEASURES' File.
I will REPLACE your data with mine.

    90562.03  BGP 19 DATA CURRENT
Note:  You already have the 'BGP 19 DATA CURRENT' File.

    90562.04  BGP 19 DATA PREVIOUS
Note:  You already have the 'BGP 19 DATA PREVIOUS' File.
```

90562.05 BGP 19 DATA BASELINE

Note: You already have the 'BGP 19 DATA BASELINE' File.

90562.06 BGP 19 NATIONAL PATIENT LISTS (including data)

Note: You already have the 'BGP 19 NATIONAL PATIENT LISTS' File.

I will REPLACE your data with mine.

90562.07 BGP 19 SNOMED SUBSETS (including data)

Note: You already have the 'BGP 19 SNOMED SUBSETS' File.

I will REPLACE your data with mine.

90562.08 BGP 19 TAXONOMIES (including data)

Note: You already have the 'BGP 19 TAXONOMIES' File.

I will REPLACE your data with mine.

90562.1 BGP 19 MEASURE GROUPS (including data)

Note: You already have the 'BGP 19 MEASURE GROUPS' File.

I will REPLACE your data with mine.

90562.12 BGP 19 PATIENT ED DATA CURRENT

Note: You already have the 'BGP 19 PATIENT ED DATA CURRENT' File.

90562.13 BGP 19 PATIENT ED DATA PREVIOUS

Note: You already have the 'BGP 19 PATIENT ED DATA PREVIOUS' File.

90562.14 BGP 19 PATIENT ED DATA BASELINE

Note: You already have the 'BGP 19 PATIENT ED DATA BASELINE' File.

90562.15 BGP 19 PAT ED MEASURES (including data)

Note: You already have the 'BGP 19 PAT ED MEASURES' File.

I will REPLACE your data with mine.

90562.17 BGP 19 ICARE GROUPS (including data)

Note: You already have the 'BGP 19 ICARE GROUPS' File.

I will REPLACE your data with mine.

90562.18 BGP 19 ICARE CATEGORIES (including data)

Note: You already have the 'BGP 19 ICARE CATEGORIES' File.

I will REPLACE your data with mine.


```
Installing PACKAGE COMPONENTS:
```

```
Installing SECURITY KEY
```

```
Installing INPUT TEMPLATE
```

```
Installing PROTOCOL
```

```
Installing REMOTE PROCEDURE
```

```
Installing LIST TEMPLATE
```

```
Installing OPTION
```

```
Dec 04, 2018@14:16:15
```

```
Running Post-Install Routine: POST^BGPLPOS
```

```
Updating [BGP DENTAL EXAM CPTS] taxonomy...
Updating [BGP CPT DENT GEN ANESTHESIA] taxonomy...
Updating [BGP CPT CARRIES RISK ASSMT] taxonomy...
Updating [BGP DM EYE EXAM CPTS] taxonomy...
Updating [BGP FLU IZ DXS] taxonomy...
Updating [BGP TOBACCO SCREEN CPTS] taxonomy...
Updating [BGP ALCOHOL SCREENING CPTS] taxonomy...
Updating [BGP CPT HIV TESTS] taxonomy...
Updating [BGP IPC CPT PAP] taxonomy...
Updating [BGP IPC CPT HPV] taxonomy...
Updating [BGP ASTHMA LABA NDC] taxonomy...
Updating [BGP HEDIS ANTICHOLINERGIC NDC] taxonomy...
Updating [BGP HEDIS ANTITHROMBOTIC NDC] taxonomy...
Updating [BGP HEDIS ANTI-INFECTIVE NDC] taxonomy...
Updating [BGP HEDIS CARDIOVASCULAR NDC] taxonomy...
Updating [BGP HEDIS CENTRAL NERVOUS NDC] taxonomy...
Updating [BGP HEDIS NONBENZODIAZ NDC] taxonomy...
Updating [BGP HEDIS ENDOCRINE NDC] taxonomy...
Updating [BGP HEDIS PAIN NDC] taxonomy...
Updating [BGP HEDIS SKL MUSCLE RELAX NDC] taxonomy...
Updating [BGP PQA BETA BLOCKER NDC] taxonomy...
Updating [BGP PQA ARB NEPRILYSIN NDC] taxonomy...
Updating [BGP PQA RASA NDC] taxonomy...
Updating [BGP PQA CCB NDC] taxonomy...
Updating [BGP PQA BIGUANIDE NDC] taxonomy...
Updating [BGP PQA SULFONYLUREA NDC] taxonomy...
Updating [BGP PQA THIAZOLIDINEDIONE NDC] taxonomy...
Updating [BGP PQA DPP IV NDC] taxonomy...
Updating [BGP PQA DIABETES ALL CLASS NDC] taxonomy...
Updating [BGP PQA ANTIRETROVIRAL NDC] taxonomy...
Updating [BGP PQA NON-WARF ANTICOAG NDC] taxonomy...
Updating [BGP PQA WARFARIN NDC] taxonomy...
Updating [BGP PQA NEBULIZED BRONCHO NDC] taxonomy...
Updating [BGP PQA LA INHALED BRONCHO NDC] taxonomy...
Updating [BGP PQA NON-INFUSED MS NDC] taxonomy...
```

```

Updating [BGP PQA INFUSED MS NDC] taxonomy...
Updating [BGP PQA SABA NDC] taxonomy...
Updating [BGP PQA CONTROLLER NDC] taxonomy...
Updating [BGP PQA ASTHMA INHALE STER NDC] taxonomy...
Updating [BGP PQA COPD NDC] taxonomy...
Updating [BGP PQA BENZODIAZ NDC] taxonomy...
Updating [BGP PQA OPIOID NDC] taxonomy...
Updating [BGP PQA BENZODIAZ OP NDC] taxonomy...
Updating [BGP PQA STATIN NDC] taxonomy...
BGP CMS ACEI MEDS CLASS
Creating BGP CMS ACEI MEDS Taxonomy...
BGP CMS BETA BLOCKER CLASS BGP CMS BETA BLOCKER NDC
Creating BGP CMS BETA BLOCKER MEDS Taxonomy...
BGP CMS ANTIBIOTICS MEDS CLASS
Creating BGP CMS ANTIBIOTIC MEDS Taxonomy...
BGP CMS ARB MEDS CLASS
Creating BGP CMS ARB MEDS Taxonomy...

Creating DM AUDIT ASPIRIN DRUGS Taxonomy...
BGP CMS ANTI-PLATELET CLASS
Creating BGP ANTI-PLATELET DRUGS Taxonomy...
  BGP HEDIS OSTEOPOROSIS NDC
Creating BGP HEDIS OSTEOPOROSIS DRUGS Taxonomy...
  BGP ASTHMA CONTROLLER NDC
Creating BGP ASTHMA CONTROLLERS Taxonomy...
  BGP ASTHMA INHALED STEROID VAP
Creating BGP ASTHMA INHALED STEROIDS Taxonomy...
  BGP ASTHMA LEUKOTRIENE NDC
Creating BGP ASTHMA LEUKOTRIENE Taxonomy...
  BGP HEDIS ANTIDEPRESSANT NDC
Creating BGP HEDIS ANTIDEPRESSANT MEDS Taxonomy...
  BGP RA OA NSAID VAPI
Creating BGP RA OA NSAID MEDS Taxonomy...
BGP RA GLUCOCORTICOIDS CLASS BGP RA GLUCOCORTICOIDS VAPI
Creating BGP RA GLUCOCORTICOIDS MEDS Taxonomy...
  BGP HEDIS ANTIBIOTICS NDC
Creating BGP HEDIS ANTIBIOTICS MEDS Taxonomy...
  BGP HEDIS ASTHMA LEUK NDC
Creating BGP HEDIS ASTHMA LEUK MEDS Taxonomy...
  BGP HEDIS ASTHMA NDC
Creating BGP HEDIS ASTHMA MEDS Taxonomy...
  BGP HEDIS PRIMARY ASTHMA NDC
Creating BGP HEDIS PRIMARY ASTHMA MEDS Taxonomy...
  BGP HEDIS ASTHMA INHALED NDC
Creating BGP HEDIS ASTHMA INHALED MEDS Taxonomy...
  BGP HEDIS BETA BLOCKER NDC
Creating BGP HEDIS BETA BLOCKER MEDS Taxonomy...
  BGP RA IM GOLD NDC
Creating BGP RA IM GOLD MEDS Taxonomy...
  BGP RA AZATHIOPRINE VAPI
Creating BGP RA AZATHIOPRINE MEDS Taxonomy...

```

```

BGP RA LEFLUNOMIDE VAPI
Creating BGP RA LEFLUNOMIDE MEDS Taxonomy...
BGP RA ORAL GOLD VAPI
Creating BGP RA ORAL GOLD MEDS Taxonomy...
BGP RA CYCLOSPORINE NDC
Creating BGP RA CYCLOSPORINE MEDS Taxonomy...
BGP RA METHOTREXATE VAPI
Creating BGP RA METHOTREXATE MEDS Taxonomy...
BGP RA MYCOPHENOLATE VAPI
Creating BGP RA MYCOPHENOLATE MEDS Taxonomy...
BGP RA PENICILLAMINE VAPI
Creating BGP RA PENICILLAMINE MEDS Taxonomy...
BGP RA SULFASALAZINE VAPI
Creating BGP RA SULFASALAZINE MEDS Taxonomy...
BGP THROMBOLYTIC AGENT CLASS
Creating BGP CMS THROMBOLYTIC MEDS Taxonomy...
BGP HEDIS ANTICHOLINERGIC NDC
Creating BGP HEDIS ANTICHOLINERGIC MEDS Taxonomy...
BGP HEDIS ANTITHROMBOTIC NDC
Creating BGP HEDIS ANTITHROMBOTIC MEDS Taxonomy...
BGP HEDIS ANTI-INFECTIVE NDC
Creating BGP HEDIS ANTI-INFECTIVE MEDS Taxonomy...
BGP HEDIS CARDIOVASCULAR NDC
Creating BGP HEDIS CARDIOVASCULAR MEDS Taxonomy...
BGP HEDIS CENTRAL NERVOUS NDC
Creating BGP HEDIS CENTRAL NERVOUS MEDS Taxonomy...
BGP HEDIS NONBENZODIAZ NDC
Creating BGP HEDIS NONBENZODIAZ MEDS Taxonomy...
BGP HEDIS ENDOCRINE NDC
Creating BGP HEDIS ENDOCRINE MEDS Taxonomy...
BGP HEDIS GASTROINTESTINAL NDC
Creating BGP HEDIS GASTROINTESTINAL MED Taxonomy...
BGP HEDIS PAIN NDC
Creating BGP HEDIS PAIN MEDS Taxonomy...
BGP HEDIS SKL MUSCLE RELAX NDC
Creating BGP HEDIS SKL MUSCLE RELAX MED Taxonomy...
BGP HEDIS ACEI NDC
Creating BGP HEDIS ACEI MEDS Taxonomy...
BGP HEDIS ARB NDC
Creating BGP HEDIS ARB MEDS Taxonomy...
BGP HEDIS STATIN NDC
Creating BGP HEDIS STATIN MEDS Taxonomy...
BGP CMS WARFARIN VAPI
Creating BGP CMS WARFARIN MEDS Taxonomy...
BGP HEDIS ISOTRETINOIN NDC
Creating BGP HEDIS ISOTRETINOIN MEDS Taxonomy...
BGP HEDIS CONTRACEPTION NDC
Creating BGP HEDIS CONTRACEPTION MEDS Taxonomy...
BGP PQA OPIOID NDC
Creating BGP PQA OPIOID MEDS Taxonomy...
BGP PQA BENZODIAZ OP NDC

```

```

Creating BGP PQA BENZODIAZ OP MEDS Taxonomy...
  BGP PQA BETA BLOCKER NDC
Creating BGP PQA BETA BLOCKER MEDS Taxonomy...
  BGP PQA RASA NDC
Creating BGP PQA RASA MEDS Taxonomy...
  BGP PQA CCB NDC
Creating BGP PQA CCB MEDS Taxonomy...
  BGP PQA BIGUANIDE NDC
Creating BGP PQA BIGUANIDE MEDS Taxonomy...
  BGP PQA SULFONYLUREA NDC
Creating BGP PQA SULFONYLUREA MEDS Taxonomy...
  BGP PQA THIAZOLIDINEDIONE NDC
Creating BGP PQA THIAZOLIDINEDIONE MEDS Taxonomy...
  BGP PQA STATIN NDC
Creating BGP PQA STATIN MEDS Taxonomy...
  BGP PQA ANTIRETROVIRAL NDC
Creating BGP PQA ANTIRETROVIRAL MEDS Taxonomy...
  BGP PQA SABA NDC
Creating BGP PQA SABA MEDS Taxonomy...
  BGP PQA CONTROLLER NDC
Creating BGP PQA CONTROLLER MEDS Taxonomy...
  BGP ASTHMA LABA NDC
Creating BGP ASTHMA LABA MEDS Taxonomy...
  BGP PQA DPP IV NDC
Creating BGP PQA DPP IV MEDS Taxonomy...
  BGP PQA DIABETES ALL CLASS NDC
Creating BGP PQA DIABETES ALL CLASS Taxonomy...
  BGP PQA NON-WARF ANTICOAG NDC
Creating BGP PQA NON-WARF ANTICOAG MEDS Taxonomy...
  BGP PQA WARFARIN NDC
Creating BGP PQA WARFARIN MEDS Taxonomy...
  BGP PQA COPD NDC
Creating BGP PQA COPD MEDS Taxonomy...
  BGP PQA ASTHMA INHALE STER NDC
Creating BGP PQA ASTHMA INHALE STER MED Taxonomy...
  BGP PQA BENZODIAZ NDC
Creating BGP PQA BENZODIAZ MEDS Taxonomy...
  BGP PQA ARB NEPRILYSIN NDC
Creating BGP PQA ARB NEPRILYSIN MEDS Taxonomy...
  BGP PQA LA INHALED BRONCHO NDC
Creating BGP PQA LA INHALED BRONCHO MED Taxonomy...
  BGP PQA NEBULIZED BRONCHO NDC
Creating BGP PQA NEBULIZED BRONCHO MEDS Taxonomy...
  BGP PQA NON-INFUSED MS NDC
Creating BGP PQA NON-INFUSED MS MEDS Taxonomy...
  BGP PQA INFUSED MS NDC
Creating BGP PQA INFUSED MS MEDS Taxonomy...
  BGP CMS SMOKING CESSATION VAPI
Creating BGP CMS SMOKING CESSATION MEDS Taxonomy...

Creating BGP CMS SYSTEMIC CHEMO MEDS Taxonomy...

```

```
Creating BGP CMS IMMUNOSUPPRESSIVE MEDS Taxonomy...
BGP IPC DEPRESSION RXNORM
Creating BGP IPC DEPRESSION MEDS Taxonomy...
BGP IPC ABOVE NORMAL RXNORM
Creating BGP IPC ABOVE NORMAL MEDS Taxonomy...
BGP IPC BELOW NORMAL RXNORM
Creating BGP IPC BELOW NORMAL MEDS Taxonomy...
Creating/Updating DENTAL EXAM ADA Codes Taxonomy...
Creating/Updating DENTAL ANESTHESIA ADA Codes Taxonomy...
Creating/Updating CARRIES RISK ADA Codes Taxonomy...

Updating Routine file...

Updating KIDS files...

IHS CLINICAL REPORTING 19.0 Installed.
      Dec 04, 2018@14:17:57

Not a VA primary domain

Install Completed
```

Figure 4-1: Sample installation for IHS Clinical Reporting package 19.0

4.2 Sample Installation of the CRS GUI

1. Double-click **bgp_1900setup.exe** to launch the **Visual CRS Setup Wizard**.
2. The **Security Warning** window will display. Click **Run** (see Figure 4-2).

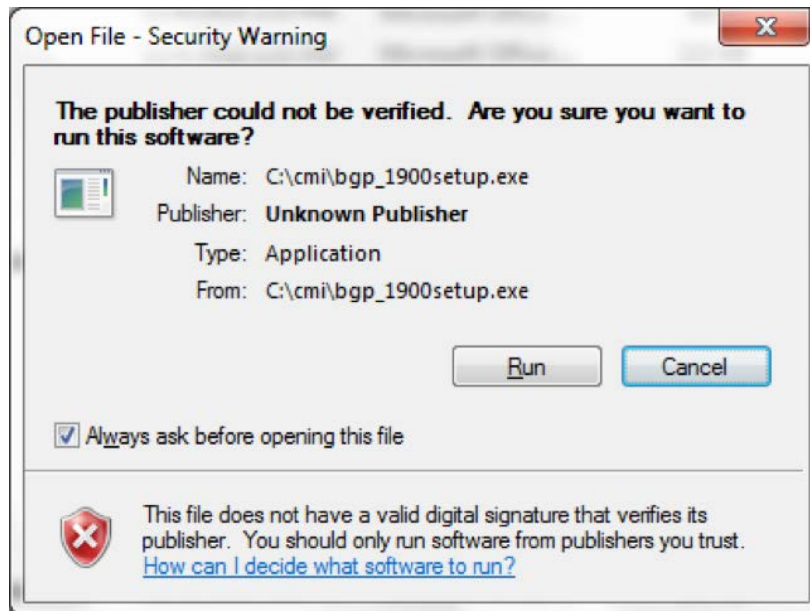


Figure 4-2: Visual CRS Security Warning window

3. The **Visual CRS Setup Wizard** dialog displays (Figure 4-3).

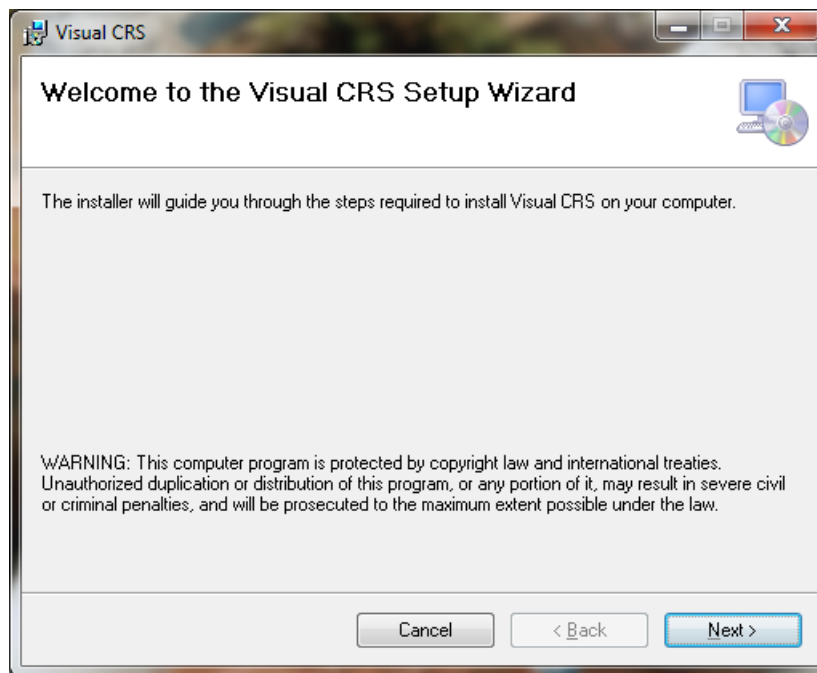


Figure 4-3: Visual CRS Setup Wizard, Welcome dialog

- Click **Next** on the Setup Wizard dialog to display the **Select Installation Folder** dialog. See Figure 4-4.

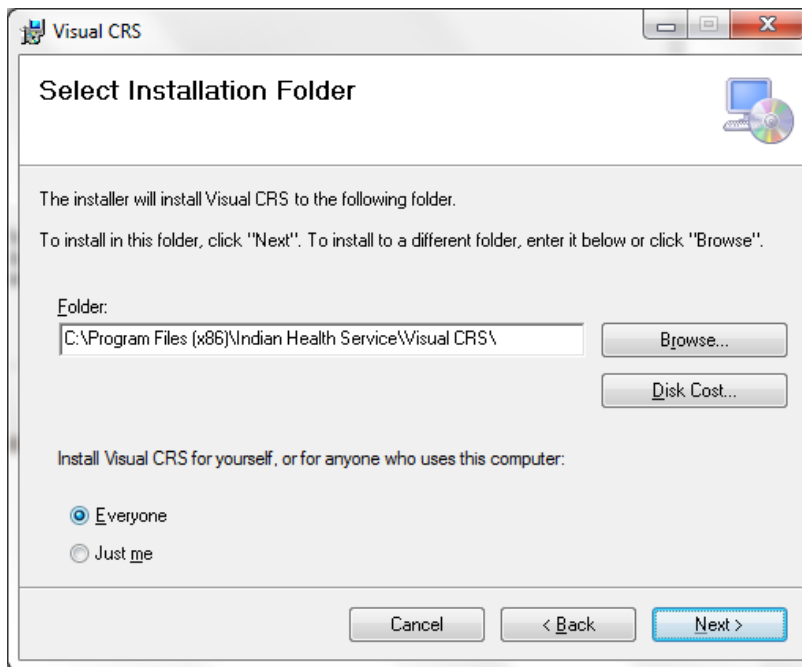


Figure 4-4: Visual CRS Setup Wizard, Select Installation Folder dialog

- Click **Next** to display the **Confirm Installation** dialog. See Figure 4-5.

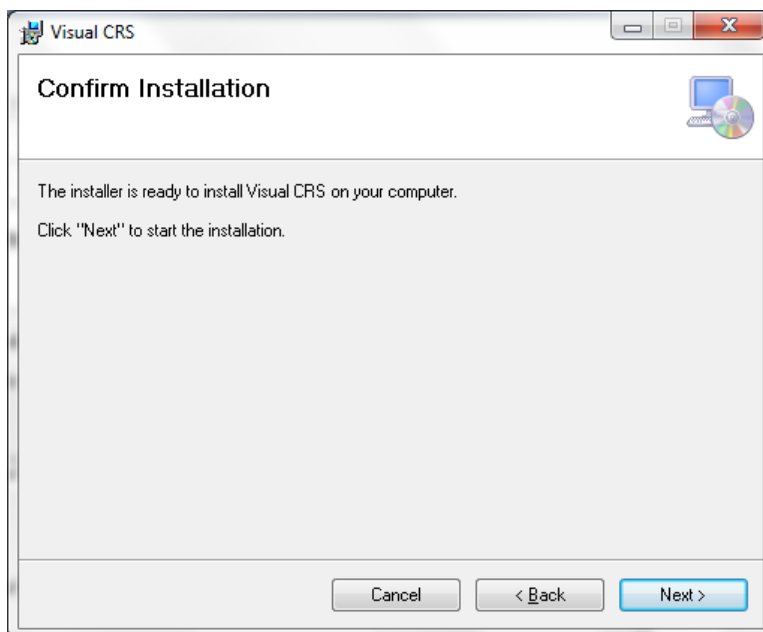


Figure 4-5: Visual CRS Setup Wizard, Confirm Installation dialog

- Click **Next** to display the **Installing Visual CRS** dialog. See Figure 4-6.

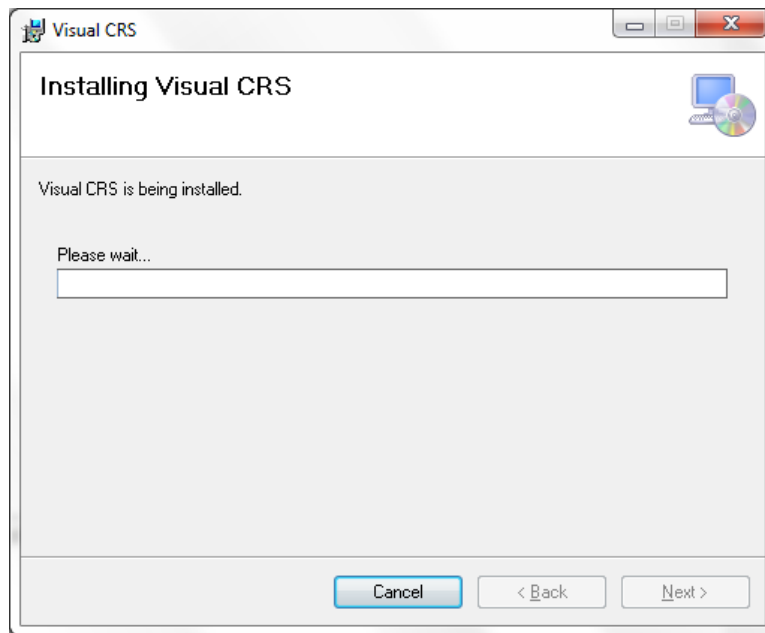


Figure 4-6: Visual CRS Setup Wizard, Installing Visual CRS dialog

- Wait while the application installs. When the installation is complete, the **Installation Complete** dialog displays. See Figure 4-7.

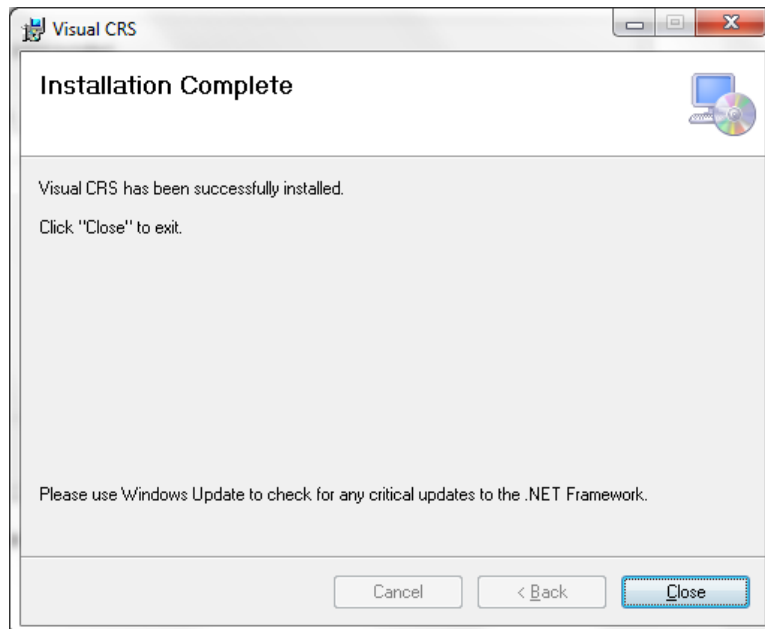


Figure 4-7: Visual CRS Setup Wizard, Installation Complete dialog

- Click **Close**.

A desktop shortcut named Visual CRS should now be available. Refer to the user manual for instructions on use of the Visual CRS application.

Acronym List

Acronym	Definition
CRS	Clinical Reporting System
ESRD	End Stage Renal Disease
GPRA	Government Performance and Results Act
GUI	Graphical User Interface
ICD	International Classification of Diseases
IHS	Indian Health Service
KIDS	Kernel Installation and Distribution System
RPMS	Resource and Patient Management System

Contact Information

If you have any questions or comments regarding this distribution, please contact the OIT Help Desk (IHS).

Phone: (888) 830-7280 (toll free)

Web: <http://www.ihs.gov/helpdesk/>

Email: support@ihs.gov