



RESOURCE AND PATIENT MANAGEMENT SYSTEM

Clinical Reporting System

(BGP)

Installation Guide and Release Notes

Version 22.0
March 2022

Office of Information Technology
Division of Information Technology

Table of Contents

1.0	Release Notes	1
1.1	Key Changes in v22.0.....	1
1.1.1	Logic Changes to National GPRA/GPRAMA Report Measures.....	1
1.1.2	Key Logic Changes to Non-GPRA Measures.....	2
1.1.3	Additional Key Enhancements and Revisions	2
1.1.4	Feature Numbers Included in Release	3
2.0	Installation Notes	4
2.1	CRS Distribution Contents and Required Resources	4
2.2	Contents of Distribution	4
2.2.1	Required Resources.....	4
2.3	Visual CRS (GUI) Distribution Contents and Required Resources.....	5
2.3.1	Contents of GUI CRS Distribution	5
2.3.2	Required Resources for GUI CRS.....	5
2.4	Before You Begin: Installation Issues	5
3.0	Installation Instructions	7
3.1	Installation of the CRS GUI.....	8
3.1.1	Installation on the RPMS Server.....	8
3.1.2	Installation on Each User's (Client) PC.....	8
4.0	Sample Installations	10
4.1	Sample Installation of CRS on RPMS Server	10
4.2	Sample Installation of the CRS GUI.....	17
5.0	Installation Configuration	21
	Acronym List	22
	Contact Information	23

Preface

The Government Performance and Results Act (GPRA) requires federal agencies to report annually on how the agency measured against the performance targets set in its annual plan. The Indian Health Service (IHS) GPRA measures include clinical prevention and treatment, quality of care, infrastructure, and administrative efficiency functions.

The IHS Clinical Reporting System (CRS) is a Resource and Patient Management System (RPMS) software application designed for national reporting, as well as Area Office and local monitoring of clinical GPRA and developmental measures. CRS was first released for FY 2002 performance measures (as GPRA+) and is based on a design by the Aberdeen Area Office (GPRA2000).

This manual provides installation instructions for CRS Version 22.0. Version 22.0 adds fiscal year (FY) 2022 clinical performance measures to existing FY 2002 through FY 2021 measures.

CRS is the reporting tool used by the IHS Office of Planning and Evaluation to collect and report clinical performance results annually to the Department of Health and Human Services and to Congress.

Each year, an updated version of CRS software is released to reflect changes in the logic descriptions of the different denominators and numerators. Additional performance measures may also be added. Local facilities can run reports as often as desired and can also use CRS to transmit data to their Area Office. The Area Office can use CRS to produce an aggregated Area Office report for either annual GPRA or Area Office director performance reports.

CRS produces reports on demand from local RPMS databases for both GPRA and developmental clinical performance measures that are based on RPMS data, thus eliminating the need for manual chart audits for evaluating and reporting clinical measures.

To produce reports with comparable data across every facility, the GPRA measures definitions were translated into programming code with the assistance of clinical subject matter experts. CRS uses predefined taxonomies to find data items in the RPMS Patient Care Component to determine if a patient meets the performance measure criteria. Taxonomies contain groups of codes (e.g., diagnoses or procedures) or site-specific terms. Each performance measure topic has one or more defined denominators and numerators.

Administrative and clinical users can review individual or all measures at any time to:

- Identify potential data issues in their RPMS, for example, missing or incorrect data.
- Monitor their site's performance against past national performance and upcoming agency goals.
- Identify specific areas where the facility is not meeting the measure to initiate business-process or other changes.
- Quickly measure the impact of process changes on performance measures.
- Identify IHS Area Offices meeting or exceeding measures to provide lessons learned.

RPMS CRS Users include:

- Area Office and site quality improvement staff.
- Compliance officers.
- GPRA coordinators.
- Clinical staff, such as physicians, nurses, nurse practitioners, and other providers.
- Area Office directors.
- Any staff involved with quality assurance initiatives.
- Staff who run the various CRS reports.

1.0 Release Notes

This manual provides user instructions on installing Version 22.0 of the Clinical Reporting System (CRS). The manual provides installation instructions for both the RPMS server-side software and the Visual CRS graphical user interface (GUI).

1.1 Key Changes in v22.0

1.1.1 Logic Changes to National GPRA/GPRAMA Report Measures

- GPRA Developmental Measures:
 - Removed the following GPRA Developmental topics:
 - Colorectal Cancer Screening
 - Use of Benzodiazepine Sedative Hypnotic Medications in the Elderly
 - Updated codes and/or logic in the following measures: Adult Immunizations; Childhood Immunizations; Cancer Screening: Pap Smear Rates; Weight Assessment and Counseling for Nutrition and Physical Activity; Physical Activity Assessment; Appropriate Medication Therapy After a Heart Attack; HIV Screening; HIV Quality of Care; Sexually Transmitted Infection (STI) Screening; Proportion of Days Covered by Medication Therapy; Concurrent Use of Opioids and Benzodiazepines.
- Statin Therapy to Reduce Cardiovascular Disease Risk in Patients with Diabetes:
 - Added SNOMED subset PXR M BGP IPC HOSPICE to denominator exceptions.
 - Removed POV 412, I24.1, I25.2 from myocardial infarction definition.
 - Removed POV 272.0 from hypercholesterolemia definition.
 - Removed ICD-9 POVs from active liver disease definition.
 - Updated medication taxonomy BGP PQA STATIN MEDS.
- Influenza:
 - Added HCPCS codes Q2034-Q2039 to influenza definition.
- Adult Immunizations:
 - Added HCPCS codes Q2034-Q2039 to influenza definition.
- Cancer Screening: Pap Smear Rates:
 - Added LOINC codes 97156-4, 97157-2 to BGP HPV LOINC CODES taxonomy.
- Colorectal Cancer Screening:

- Updated denominator age range to 45–75.
- Statin Therapy for the Prevention and Treatment of Cardiovascular Disease:
 - Added SNOMED subset PXRMBGP IPC HOSPICE to denominator exceptions.
 - Removed POV 412, I24.1, I25.2 from myocardial infarction definition.
 - Removed POV 272.0 from hypercholesterolemia definition.
 - Removed ICD-9 POVs from active liver disease definition.
 - Updated medication taxonomy BGP PQA STATIN MEDS.
- HIV Screening:
 - Added LOINC codes 97860-1, 97861-9 to BGP HIV TEST LOINC CODES taxonomy.

1.1.2 Key Logic Changes to Non-GPRA Measures

For key logic changes to non-GPRA measures, please refer to the *CRS 2022 (Version 22.0) Selected Measures Report Performance Measure List and Definitions* document located on the CRS website:

https://www.ihs.gov/sites/crs/themes/responsive2017/display_objects/documents/crsv22/SelectedMeasuresV220.pdf.

1.1.3 Additional Key Enhancements and Revisions

- Updated baseline year to 2016.
- Updated demo patients to include those with an SSN that begins with five zeros.
- Added functionality to display Patient Preferred Name on GPRA/GPRAMA Forecast Patient List

This application uses the AUPN DISPLAY PPN parameter functionality and is defaulted to OFF until Patient Preferred Name (PPN) is available across the enterprise.

Note: While this parameter is turned off, the Patient Preferred Name will not display in this application. This allows the Patient Preferred Name display to be turned on at once without requiring a coordinated release of all applications. Once all applications support the display of the PPN, instructions will be sent out on how to enable this parameter system-wide.

1.1.4 Feature Numbers Included in Release

- 76897 – Add Patient Preferred Name (PPN) to GPRA Forecast Report
- 78079 – Update baseline year to 2016
- 78080 – Add new Influenza codes
- 78081 – Include patients with SSN starting with 5 zeros in demo patient logic
- 78082 – Update Statin Therapy Measures
- 78083 – Update age range for Colorectal Cancer Screening
- 78084 – Retire two PQA measures
- 78085 – Remove old Nutrition and Exercise codes
- 78087 – Move 21.1 software to v22.0
- 78086 – Update export files
- 78088 – Update summaries
- 78089 – Update lab/PQA medication taxonomies
- 78090 – Update manuals
- 78091 – GUI: Add new version and testing
- 78092 – GUI: Help file

2.0 Installation Notes

Note: Read the entire Notes file prior to attempting any installation.

Prefix: BGP

Current Version: 22.0

Note: This distribution of the CRS contains Version 22.0 of CRS and the GUI front end to the CRS system. The server-side (i.e., “roll-and-scroll” or backend) version 22.0 of the package can be installed alone or with both the GUI and the server-side versions. Currently, there is no requirement to install the GUI.

Please install version 22.0 of CRS (bgp_2200.k) at all sites regardless of whether the site opts to install and use the GUI portion of the package. Version 22.0 of CRS and the GUI have different requirements; please take note of the requirements section for each piece of the software.

2.1 CRS Distribution Contents and Required Resources

2.2 Contents of Distribution

Table 2-1: Contents of Distribution

File	Description
bgp_2200.k	Kernel Installation and Distribution System (KIDS) file containing software
bgp_220i.pdf	Installation guide in PDF format (this manual)
bgp_220t.pdf	Technical Manual in PDF format
bgp_220u.pdf	User Manual in PDF format
bgp_220u_visual.pdf	Visual CRS User Manual in PDF format
bgp_2200client.zip	Visual CRS software for Client's PC

2.2.1 Required Resources

- Kernel v8.0 patch 1018 (XU*8.0*1018) or later
- FileMan v22.0 patch 1018 (DI*22.0*1018) or later

- Taxonomy v5.1 patch 39 or later must be installed (atx_0510.39k, atx*5.1*39)
- AUPN v99.1 patch 29 or later (aupn9910.29k, aupn*99.1*29)
- IHS Clinical Reporting System version 21.1 must be installed (bgp_2110.k).

2.3 Visual CRS (GUI) Distribution Contents and Required Resources

2.3.1 Contents of GUI CRS Distribution

- bgp_2200client.zip.

The following two files are contained in the zip file:

- bgp_2200setup.exe.
- bgp_2200.msi.

2.3.2 Required Resources for GUI CRS

Additional requirements for installing and using Visual CRS on a client's PC:

- On the RPMS Server:
 - BMX v4.0.
 - IHS Clinical Reporting System v22.0.
- On the Client (User's) PC:
 - Windows XP Service Pack 3 or higher.
 - Microsoft Office 2003 or later.
 - .NET Framework v4.0.

Note: If the CRS GUI will not be installed, ignore these requirements.

If the .NET Framework v4.0 is not installed, it will automatically be downloaded and installed when the client installation is started.

2.4 Before You Begin: Installation Issues

1. Make a copy of this distribution for offline storage.
2. Print all notes/readme files.
3. Create a printed audit trail in case there are any problems with the installation.

To capture terminal output during the installation, use an auxport printer attached to the terminal on which the installation is being performed.

3.0 Installation Instructions

Note: This installation is a KIDS install. For any questions on how to do a KIDS installation, please contact your Area Office information systems support personnel.

In all UCIs running the IHS CRS:

1. Ensure that users are unable to use the CRS for the duration of this installation.
2. Save all routines (^%RO (CACHE) in the BGPU* namespace for use in returning to the prior existing version, if needed.

Note: If this is the first install of v22.0 there will be few, if any, routines in this namespace.

If no problems are noted with the new installation, remove saved routines from your system seven to ten days after this install.

3. Install **bgp_2200.k**. This is the KIDS file for the IHS CRS:
 - a. Load the distribution into KIDS using **Option 1** on the **KIDS Installation menu**. The distribution was released in a file named **bgp_2200.k**.
 - b. Verify the load using **Option 2** on the **KIDS Installation** menu.
 - c. Consider using **Options 3** and **4** on the **KIDS Installation** menu to print and compare the Transport global.
 - d. Install the distribution using **Option 6** on the **Installation** menu.
 - e. To see results, use the **KIDS Install File Print** option to view/print the IHS CLINICAL REPORTING v22.0 entry.

Note: For assistance with a KIDS install, call the Area Office support personnel.

4. After the install completes, assign security keys, as appropriate, using Table 3-1.

Table 3-1: Assigning security keys

Name	Descriptive Name	Description
BGPZAREA	BGP Area Report	This key unlocks the Area Office report options on the main BGPMENU. Note: This key should be assigned <i>only</i> at the Area Office level.

Name	Descriptive Name	Description
BGPZMENU	BGP Main Menu–CRS	This key unlocks the main CRS menu. It should be assigned to all users who need to run GPRA/CRS reports.
BGPZ PATIENT LISTS	BGP Patient Lists	This key allows the holder to obtain patient lists. The patient lists contain sensitive patient/clinical information. This key should be given <i>only</i> to those users who have a need for such information.
BGPZ SITE PARAMETERS	BGP Site Parameters	This key should be given to those with authority to update the site parameters.
BGPZ TAXONOMY EDIT	BGP Taxonomy Edit	This key should be given <i>only</i> to users who will need to update taxonomies.

3.1 Installation of the CRS GUI

There are two parts to the CRS GUI install: installation on the RPMS server and installation on the local (client) PC. See the steps below for installation instructions.

3.1.1 Installation on the RPMS Server

1. Make sure BMX v4.0 is installed in RPMS on the RPMS Server.
2. Make sure CRS v22.0 is installed in RPMS on the RPMS server. (See instructions above.)

Note: If a previous version of Visual CRS is being used you will not need to perform Steps 3 and 4. If this is the first time Visual CRS is being used, perform Steps 3 and 4.

3. Assign option **BGPGRPC** as a secondary menu option with a synonym of **BGPG** for each user.
4. Assign option **BMXRPC** as a secondary menu option with a synonym of **BMX** for each user.

3.1.2 Installation on Each User's (Client) PC

1. Place **bgp_2200client.zip** into a directory of your choice and unzip the file. There are two files included in the zip file: **bgp_2200.msi** and **bgp_2200setup.exe**.

2. Double-click the **bgp_2200setup.exe** file that was distributed with Visual CRS. If asked, accept the License Agreement, and follow the instructions for downloading and installing Microsoft .Net Framework v4.0. This will only occur if the most current version of Microsoft.Net Framework v4.0 is not on the local PC. This step takes approximately 20–30 minutes over a DSL connection.
3. Follow the prompts on the **Visual CRS Setup** screens and accept all the defaults.
4. Double-click the **Visual CRS** shortcut that displays on the desktop.
5. If this is the first install, a new connection must be added. Please refer to the *BMX 4.0 User Manual* for instructions.
6. When the **RPMS Login** window displays, enter the RPMS access, and verify codes and click **OK**.
7. If data for multiple facilities is stored on the same RPMS database, the **Select Division** window displays. Select a Division and click **OK**.
8. You are now running the Visual CRS software.

4.0 Sample Installations

4.1 Sample Installation of CRS on RPMS Server

```

CMBB>D ^XPDKRN

KIDS 8.0

Select KIDS OPTION: LOAD A DISTRIBUTION
Enter a Host File: G:\export\bgp_2200.k

KIDS Distribution saved on Jan 05, 2022@12:28:31
Comment: IHS CLINICAL REPORTING V22.0

This Distribution contains Transport Globals for the following Package(s):
Build IHS CLINICAL REPORTING 22.0 has been loaded before, here is when:
      IHS CLINICAL REPORTING 22.0   Install Completed
                                   was loaded on Dec 07, 2021@10:28:30
OK to continue with Load? NO// y  YES

Distribution OK!

Want to Continue with Load? YES//
Loading Distribution...

Build IHS CLINICAL REPORTING 22.0 has an Environmental Check Routine
Want to RUN the Environment Check Routine? YES//
      IHS CLINICAL REPORTING 22.0
Will first run the Environment Check Routine, BGPUPOS

      Patch "XU*8.0*1018" is installed.
      Patch "DI*22.0*1018" is installed.
      Patch "ATX*5.1*39" is installed.
      Patch "AUPN*99.1*29" is installed.
      CRS (BGP) Version 21.1 is installed.
Use INSTALL NAME: IHS CLINICAL REPORTING 22.0 to install this Distribution.

CMBB>d ^XPDKRN

KIDS 8.0

Select KIDS OPTION: INSTALL PACKAGE(S)
Select INSTALL NAME:      IHS CLINICAL REPORTING 22.0      Loaded from Distribution
1/5/22@12:32:12
=> IHS CLINICAL REPORTING V22.0 ;Created on Jan 05, 2022@12:28:31

This Distribution was loaded on Jan 05, 2022@12:32:12 with header of
      IHS CLINICAL REPORTING V22.0 ;Created on Jan 05, 2022@12:28:31
It consisted of the following Install(s):
IHS CLINICAL REPORTING 22.0
Checking Install for Package IHS CLINICAL REPORTING 22.0
Will first run the Environment Check Routine, BGPUPOS

```

```
Patch "XU*8.0*1018" is installed.
Patch "DI*22.0*1018" is installed.
Patch "ATX*5.1*39" is installed.
Patch "AUPN*99.1*29" is installed.
CRS (BGP) Version 21.1 is installed.
```

Install Questions for IHS CLINICAL REPORTING 22.0

Incoming Files:

```
90241.01 BGP CONTROL FILE (including data)
Note: You already have the 'BGP CONTROL FILE' File.
I will REPLACE your data with mine.
```

```
90241.02 BGP SITE PARAMETERS
Note: You already have the 'BGP SITE PARAMETERS' File.
```

```
90241.03 BGP SUMMARY CATEGORIES (including data)
Note: You already have the 'BGP SUMMARY CATEGORIES' File.
I will REPLACE your data with mine.
```

```
90245 BGP AREA AUTOMATED GPRA PARAMS
Note: You already have the 'BGP AREA AUTOMATED GPRA PARAMS' File.
```

```
90245.1 BGP GPRA FLAT FILE DATA
Note: You already have the 'BGP GPRA FLAT FILE DATA' File.
```

```
90566.01 BGP 22 MEASURES (including data)
Note: You already have the 'BGP 22 MEASURES' File.
I will REPLACE your data with mine.
```

```
90566.02 BGP 22 INDIVIDUAL MEASURES (including data)
Note: You already have the 'BGP 22 INDIVIDUAL MEASURES' File.
I will REPLACE your data with mine.
```

```
90566.03 BGP 22 DATA CURRENT
Note: You already have the 'BGP 22 DATA CURRENT' File.
```

```
90566.04 BGP 22 DATA PREVIOUS
Note: You already have the 'BGP 22 DATA PREVIOUS' File.
```

```
90566.05 BGP 22 DATA BASELINE
Note: You already have the 'BGP 22 DATA BASELINE' File.
```

```
90566.06 BGP 22 NATIONAL PATIENT LISTS (including data)
Note: You already have the 'BGP 22 NATIONAL PATIENT LISTS' File.
I will REPLACE your data with mine.
```

```
90566.07 BGP 22 SNOMED SUBSETS (including data)
Note: You already have the 'BGP 22 SNOMED SUBSETS' File.
I will REPLACE your data with mine.

90566.08 BGP 22 TAXONOMIES USED (including data)
Note: You already have the 'BGP 22 TAXONOMIES USED' File.
I will REPLACE your data with mine.

90566.1 BGP 22 MEASURE GROUPS (including data)
Note: You already have the 'BGP 22 MEASURE GROUPS' File.
I will REPLACE your data with mine.

90566.17 BGP 22 ICARE GROUPS (including data)
Note: You already have the 'BGP 22 ICARE GROUPS' File.
I will REPLACE your data with mine.

90566.18 BGP 22 ICARE CATEGORIES (including data)
Note: You already have the 'BGP 22 ICARE CATEGORIES' File.
I will REPLACE your data with mine.

90566.19 BGP 22 GUI REPORT OUTPUT
Note: You already have the 'BGP 22 GUI REPORT OUTPUT' File.

90566.21 BGP 22 SNOMED LISTS (including data)
Note: You already have the 'BGP 22 SNOMED LISTS' File.
I will REPLACE your data with mine.

90566.22 BGP 22 ELDER INDIVIDUAL MEASURES (including data)
Note: You already have the 'BGP 22 ELDER INDIVIDUAL MEASURES' File.
I will REPLACE your data with mine.

90566.23 BGP 22 ELDER DATA CURRENT
Note: You already have the 'BGP 22 ELDER DATA CURRENT' File.

90566.24 BGP 22 ELDER DATA PREVIOUS
Note: You already have the 'BGP 22 ELDER DATA PREVIOUS' File.

90566.25 BGP 22 ELDER DATA BASELINE
Note: You already have the 'BGP 22 ELDER DATA BASELINE' File.

90566.26 BGP 22 ELDER MEASURES (including data)
Note: You already have the 'BGP 22 ELDER MEASURES' File.
I will REPLACE your data with mine.

Enter the Device you want to print the Install messages.
You can queue the install by enter a 'Q' at the device prompt.
```



```

Updating [BGP HEDIS CENTRAL NERVOUS NDC] taxonomy...
Updating [BGP HEDIS NONBENZODIAZ NDC] taxonomy...
Updating [BGP HEDIS ENDOCRINE NDC] taxonomy...
Updating [BGP HEDIS PAIN NDC] taxonomy...
Updating [BGP HEDIS SKL MUSCLE RELAX NDC] taxonomy...
Updating [BGP PQA BETA BLOCKER NDC] taxonomy...
Updating [BGP PQA ARB NEPRILYSIN NDC] taxonomy...
Updating [BGP PQA CCB NDC] taxonomy...
Updating [BGP PQA BIGUANIDE NDC] taxonomy...
Updating [BGP PQA SULFONYLUREA NDC] taxonomy...
Updating [BGP PQA THIAZOLIDINEDIONE NDC] taxonomy...
Updating [BGP PQA DPP IV NDC] taxonomy...
Updating [BGP PQA DIABETES ALL CLASS NDC] taxonomy...
Updating [BGP PQA STATIN NDC] taxonomy...
Updating [BGP PQA ANTIRETROVIRAL NDC] taxonomy...
Updating [BGP PQA NON-WARF ANTICOAG NDC] taxonomy...
Updating [BGP PQA WARFARIN NDC] taxonomy...
Updating [BGP PQA NEBULIZED BRONCHO NDC] taxonomy...
Updating [BGP PQA LA INHALED BRONCHO NDC] taxonomy...
Updating [BGP PQA NON-INFUSED MS NDC] taxonomy...
Updating [BGP PQA INFUSED MS NDC] taxonomy...
Updating [BGP PQA ASTHMA INHALE STER NDC] taxonomy...
Updating [BGP PQA COPD NDC] taxonomy...
Updating [BGP PQA BENZODIAZ OP NDC] taxonomy...
Updating [BGP PQA RASA NDC] taxonomy...
Updating [BGP PQA OPIOID NDC] taxonomy...
BGP CMS ACEI MEDS CLASS
Creating BGP CMS ACEI MEDS Taxonomy...
BGP CMS BETA BLOCKER CLASS BGP CMS BETA BLOCKER NDC
Creating BGP CMS BETA BLOCKER MEDS Taxonomy...
BGP CMS ANTIBIOTICS MEDS CLASS
Creating BGP CMS ANTIBIOTIC MEDS Taxonomy...
BGP CMS ARB MEDS CLASS
Creating BGP CMS ARB MEDS Taxonomy...

Creating DM AUDIT ASPIRIN DRUGS Taxonomy...
BGP CMS ANTI-PLATELET CLASS
Creating BGP ANTI-PLATELET DRUGS Taxonomy...
  BGP HEDIS OSTEOPOROSIS NDC
Creating BGP HEDIS OSTEOPOROSIS DRUGS Taxonomy...
  BGP ASTHMA CONTROLLER NDC
Creating BGP ASTHMA CONTROLLERS Taxonomy...
  BGP ASTHMA INHALED STEROID VAP
Creating BGP ASTHMA INHALED STEROIDS Taxonomy...
  BGP ASTHMA LEUKOTRIENE NDC
Creating BGP ASTHMA LEUKOTRIENE Taxonomy...
  BGP HEDIS ANTIDEPRESSANT NDC
Creating BGP HEDIS ANTIDEPRESSANT MEDS Taxonomy...
  BGP RA OA NSAID VAPI
Creating BGP RA OA NSAID MEDS Taxonomy...
BGP RA GLUCOCORTICOIDS CLASS BGP RA GLUCOCORTICOIDS VAPI
Creating BGP RA GLUCOCORTICOIDS MEDS Taxonomy...
  BGP HEDIS ANTIBIOTICS NDC
Creating BGP HEDIS ANTIBIOTICS MEDS Taxonomy...
  BGP HEDIS ASTHMA LEUK NDC
Creating BGP HEDIS ASTHMA LEUK MEDS Taxonomy...
  BGP HEDIS ASTHMA NDC
Creating BGP HEDIS ASTHMA MEDS Taxonomy...
  BGP HEDIS PRIMARY ASTHMA NDC

```

```

Creating BGP HEDIS PRIMARY ASTHMA MEDS Taxonomy...
  BGP HEDIS ASTHMA INHALED NDC
Creating BGP HEDIS ASTHMA INHALED MEDS Taxonomy...
  BGP HEDIS BETA BLOCKER NDC
Creating BGP HEDIS BETA BLOCKER MEDS Taxonomy...
  BGP RA IM GOLD NDC
Creating BGP RA IM GOLD MEDS Taxonomy...
  BGP RA AZATHIOPRINE VAPI
Creating BGP RA AZATHIOPRINE MEDS Taxonomy...
  BGP RA LEFLUNOMIDE VAPI
Creating BGP RA LEFLUNOMIDE MEDS Taxonomy...
  BGP RA ORAL GOLD VAPI
Creating BGP RA ORAL GOLD MEDS Taxonomy...
  BGP RA CYCLOSPORINE NDC
Creating BGP RA CYCLOSPORINE MEDS Taxonomy...
  BGP RA METHOTREXATE VAPI
Creating BGP RA METHOTREXATE MEDS Taxonomy...
  BGP RA MYCOPHENOLATE VAPI
Creating BGP RA MYCOPHENOLATE MEDS Taxonomy...
  BGP RA PENICILLAMINE VAPI
Creating BGP RA PENICILLAMINE MEDS Taxonomy...
  BGP RA SULFASALAZINE VAPI
Creating BGP RA SULFASALAZINE MEDS Taxonomy...
BGP THROMBOLYTIC AGENT CLASS
Creating BGP CMS THROMBOLYTIC MEDS Taxonomy...
  BGP HEDIS ANTICHOLINERGIC NDC
Creating BGP HEDIS ANTICHOLINERGIC MEDS Taxonomy...
  BGP HEDIS ANTITHROMBOTIC NDC
Creating BGP HEDIS ANTITHROMBOTIC MEDS Taxonomy...
  BGP HEDIS ANTI-INFECTIVE NDC
Creating BGP HEDIS ANTI-INFECTIVE MEDS Taxonomy...
  BGP HEDIS CARDIOVASCULAR NDC
Creating BGP HEDIS CARDIOVASCULAR MEDS Taxonomy...
  BGP HEDIS CENTRAL NERVOUS NDC
Creating BGP HEDIS CENTRAL NERVOUS MEDS Taxonomy...
  BGP HEDIS NONBENZODIAZ NDC
Creating BGP HEDIS NONBENZODIAZ MEDS Taxonomy...
  BGP HEDIS ENDOCRINE NDC
Creating BGP HEDIS ENDOCRINE MEDS Taxonomy...
  BGP HEDIS GASTROINTESTINAL NDC
Creating BGP HEDIS GASTROINTESTINAL MED Taxonomy...
  BGP HEDIS PAIN NDC
Creating BGP HEDIS PAIN MEDS Taxonomy...
  BGP HEDIS SKL MUSCLE RELAX NDC
Creating BGP HEDIS SKL MUSCLE RELAX MED Taxonomy...
  BGP HEDIS ACEI NDC
Creating BGP HEDIS ACEI MEDS Taxonomy...
  BGP HEDIS ARB NDC
Creating BGP HEDIS ARB MEDS Taxonomy...
  BGP HEDIS STATIN NDC
Creating BGP HEDIS STATIN MEDS Taxonomy...
  BGP CMS WARFARIN VAPI
Creating BGP CMS WARFARIN MEDS Taxonomy...
  BGP HEDIS ISOTRETINOIN NDC
Creating BGP HEDIS ISOTRETINOIN MEDS Taxonomy...
  BGP HEDIS CONTRACEPTION NDC
Creating BGP HEDIS CONTRACEPTION MEDS Taxonomy...
  BGP PQA OPIOID NDC
Creating BGP PQA OPIOID MEDS Taxonomy...

```

```

BGP PQA BENZODIAZ OP NDC
Creating BGP PQA BENZODIAZ OP MEDS Taxonomy...
BGP PQA BETA BLOCKER NDC
Creating BGP PQA BETA BLOCKER MEDS Taxonomy...
BGP PQA RASA NDC
Creating BGP PQA RASA MEDS Taxonomy...
BGP PQA CCB NDC
Creating BGP PQA CCB MEDS Taxonomy...
BGP PQA BIGUANIDE NDC
Creating BGP PQA BIGUANIDE MEDS Taxonomy...
BGP PQA SULFONYLUREA NDC
Creating BGP PQA SULFONYLUREA MEDS Taxonomy...
BGP PQA THIAZOLIDINEDIONE NDC
Creating BGP PQA THIAZOLIDINEDIONE MEDS Taxonomy...
BGP PQA STATIN NDC
Creating BGP PQA STATIN MEDS Taxonomy...
BGP PQA ANTIRETROVIRAL NDC
Creating BGP PQA ANTIRETROVIRAL MEDS Taxonomy...
BGP PQA SABA NDC
Creating BGP PQA SABA MEDS Taxonomy...
BGP PQA CONTROLLER NDC
Creating BGP PQA CONTROLLER MEDS Taxonomy...
BGP ASTHMA LABA NDC
Creating BGP ASTHMA LABA MEDS Taxonomy...
BGP PQA DPP IV NDC
Creating BGP PQA DPP IV MEDS Taxonomy...
BGP PQA DIABETES ALL CLASS NDC
Creating BGP PQA DIABETES ALL CLASS Taxonomy...
BGP PQA NON-WARF ANTICOAG NDC
Creating BGP PQA NON-WARF ANTICOAG MEDS Taxonomy...
BGP PQA WARFARIN NDC
Creating BGP PQA WARFARIN MEDS Taxonomy...
BGP PQA COPD NDC
Creating BGP PQA COPD MEDS Taxonomy...
BGP PQA ASTHMA INHALE STER NDC
Creating BGP PQA ASTHMA INHALE STER MED Taxonomy...
BGP PQA BENZODIAZ NDC
Creating BGP PQA BENZODIAZ MEDS Taxonomy...
BGP PQA ARB NEPRILYSIN NDC
Creating BGP PQA ARB NEPRILYSIN MEDS Taxonomy...
BGP PQA LA INHALED BRONCHO NDC
Creating BGP PQA LA INHALED BRONCHO MED Taxonomy...
BGP PQA NEBULIZED BRONCHO NDC
Creating BGP PQA NEBULIZED BRONCHO MEDS Taxonomy...
BGP PQA NON-INFUSED MS NDC
Creating BGP PQA NON-INFUSED MS MEDS Taxonomy...
BGP PQA INFUSED MS NDC
Creating BGP PQA INFUSED MS MEDS Taxonomy...
BGP CMS SMOKING CESSATION VAPI
Creating BGP CMS SMOKING CESSATION MEDS Taxonomy...

Creating BGP CMS SYSTEMIC CHEMO MEDS Taxonomy...

Creating BGP CMS IMMUNOSUPPRESSIVE MEDS Taxonomy...
BGP IPC DEPRESSION RXNORM
Creating BGP IPC DEPRESSION MEDS Taxonomy...
BGP IPC ABOVE NORMAL RXNORM
Creating BGP IPC ABOVE NORMAL MEDS Taxonomy...
BGP IPC BELOW NORMAL RXNORM

```

```
Creating BGP IPC BELOW NORMAL MEDS Taxonomy...
BGP ECQM DEMENTIA RXNORM
Creating BGP ECQM DEMENTIA MEDS Taxonomy...
Creating/Updating SSC ADA Codes Taxonomy...

Updating Routine file...

Updating KIDS files...

IHS CLINICAL REPORTING 22.0 Installed.
      Jan 05, 2022@12:34:02

Not a VA primary domain

Install Completed
```

Figure 4-1: Sample installation for IHS Clinical Reporting package 22.0

4.2 Sample Installation of the CRS GUI

1. Double-click **bgp_2200setup.exe** to launch the **Visual CRS Setup Wizard**.
2. The **Visual CRS Setup Wizard** dialog displays (Figure 4-2).



Figure 4-2: Visual CRS Setup Wizard, Welcome dialog

- Click **Next** on the Setup Wizard dialog to display the **Select Installation Folder** dialog. See Figure 4-3.

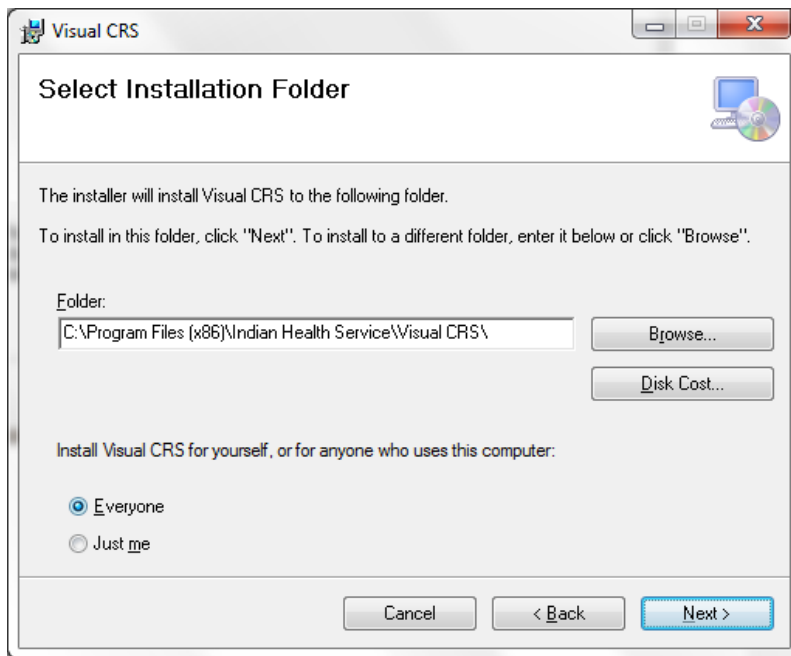


Figure 4-3: Visual CRS Setup Wizard, Select Installation Folder dialog

- Click **Next** to display the **Confirm Installation** dialog. See Figure 4-4.

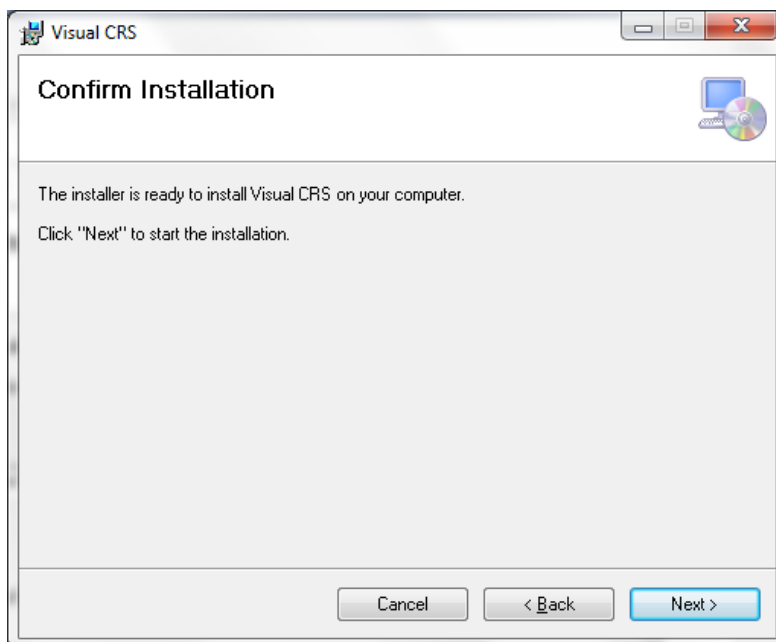


Figure 4-4: Visual CRS Setup Wizard, Confirm Installation dialog

- Click **Next** to display the **Installing Visual CRS** dialog. See Figure 4-5.

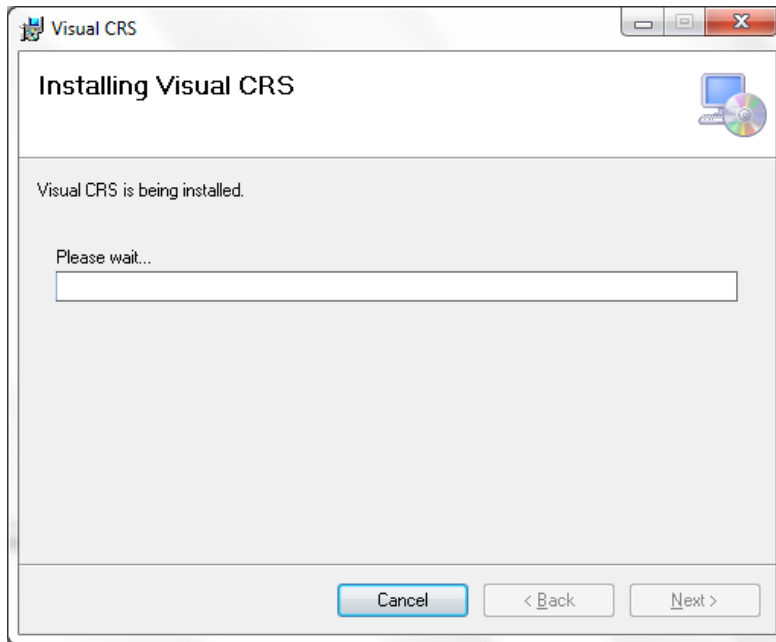


Figure 4-5: Visual CRS Setup Wizard, Installing Visual CRS dialog

- Wait while the application installs. When the installation is complete, the **Installation Complete** dialog displays. See Figure 4-6.

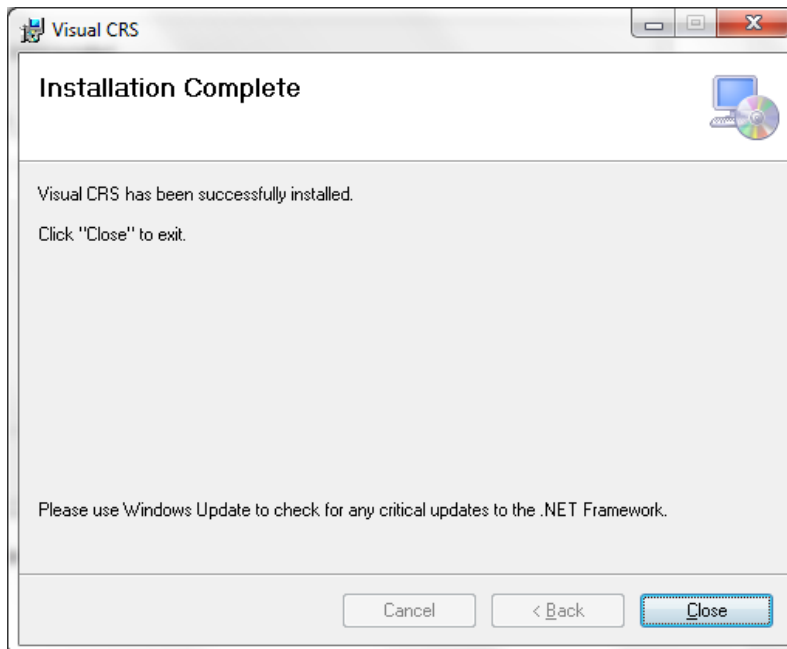


Figure 4-6: Visual CRS Setup Wizard, Installation Complete dialog

7. Click **Close**.

A desktop shortcut named **Visual CRS** should now be available. Refer to the user manual for instructions on use of the Visual CRS application.

5.0 Installation Configuration

The requirements for successful installation are listed in Sections 2.2.1 (KIDS build) and 2.3.2 (GUI install). There are no other reference materials other than this installation manual.

Acronym List

Acronym	Definition
BNI	Brief Negotiated Interview
CPT	Current Procedural Terminology
CRS	Clinical Reporting System
eCQM	Electronic Clinical Quality Measures
ENDS	Electronic Nicotine Delivery Systems
FY	Fiscal Year
GPRA	Government Performance and Results Act
GPRAMA	GPRA Modernization Act
GUI	Graphical User Interface
HEDIS	Healthcare Effectiveness Data and Information Set
ICD	International Classification of Diseases
IHS	Indian Health Service
IPC	Improving Patient Care
KIDS	Kernel Installation and Distribution System
LDL	Low-Density Lipoprotein
PPN	Patient Preferred Name
RPMS	Resource and Patient Management System
SBIRT	Screening, Brief Intervention, and Referral to Treatment
SNOMED	Systematized Nomenclature of Medicine
SUD	Substance Use Disorder
UCI	Unique Client Identifier

Contact Information

If you have any questions or comments regarding this distribution, please contact the IHS IT Service Desk.

Phone: (888) 830-7280 (toll free)

Web: <https://www.ihs.gov/itsupport/>

E-mail: itsupport@ihs.gov