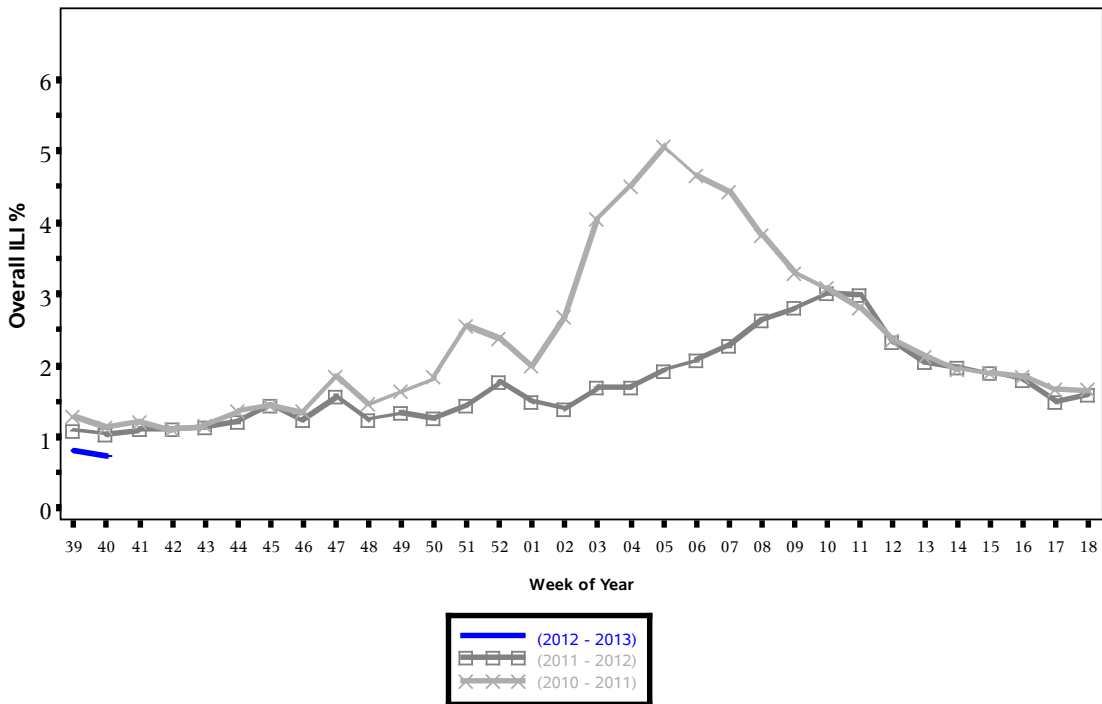


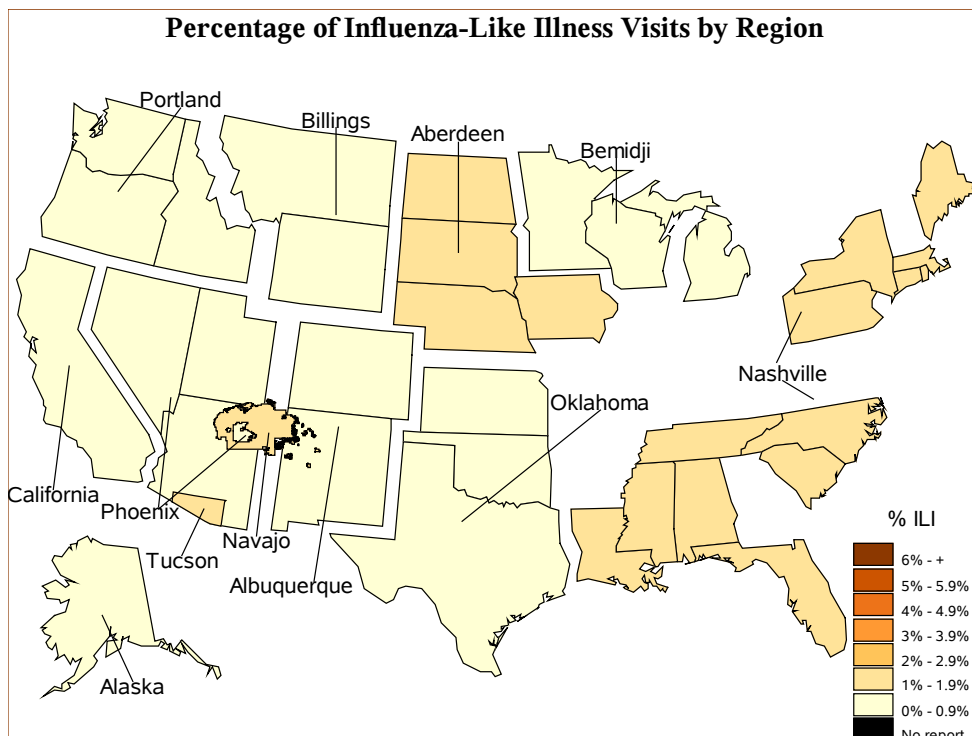


Indian Health Service
 Division of Epidemiology and Disease
 Prevention
 Influenza Surveillance Report
IHS Influenza Awareness System (IIAS)
#1 (Week 40: 9/30/2012 – 10/6/2012)

Percentage of Visits for Influenza-like Illness (ILI) per week
 Overall ILI % (ILI visits per week / Total visits per week)
 (ILI) in IHS, October
 through April



All data are preliminary and may change as more reports are received.



% Visits for ILI Compared to Previous Week

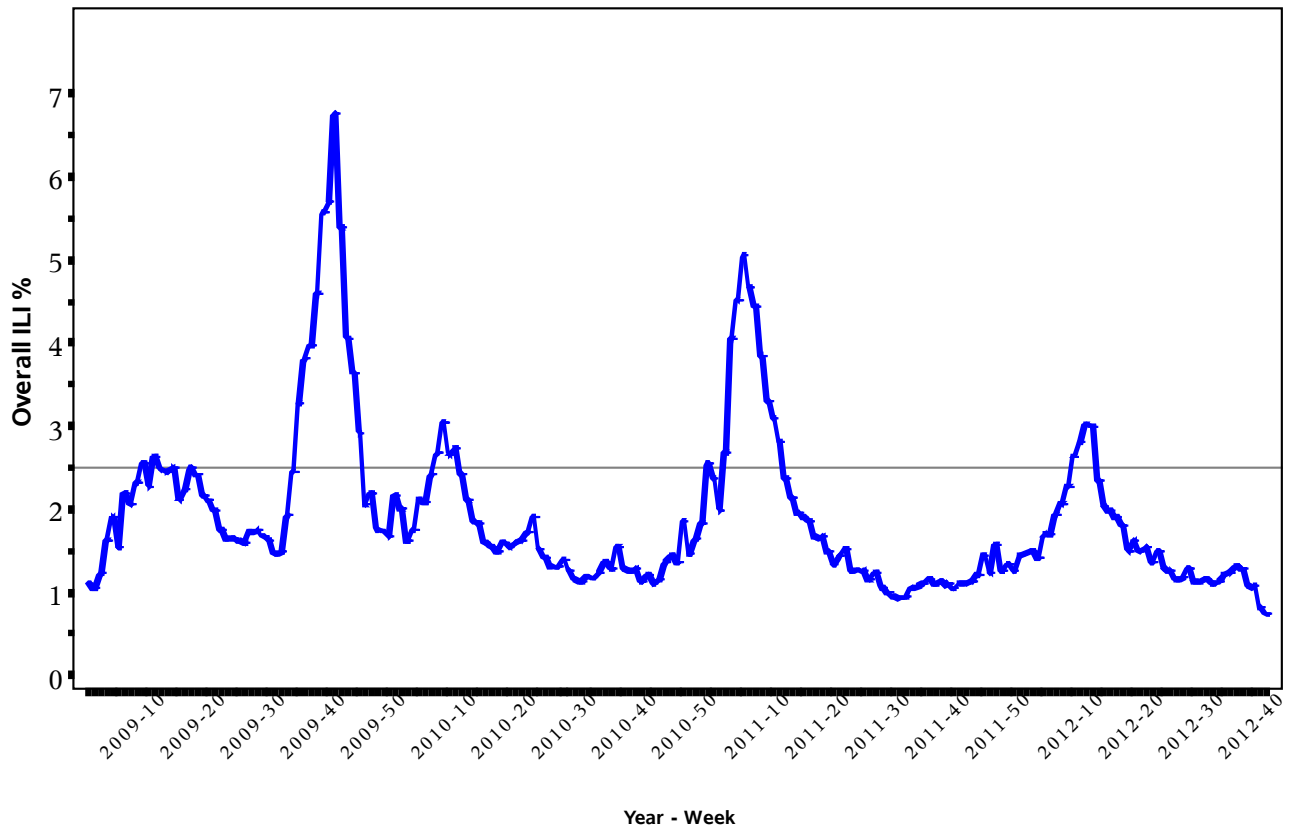
IHS Area	% in week 40
NATIONAL	0.8
Aberdeen	1.0
Alaska	0.2
Albuquerque	0.7
Bemidji	0.9
Billings	0.7
California	0.6
Nashville	1.2
Navajo	1.3
Oklahoma	0.5
Phoenix	0.9
Portland	0.5
Tucson	1.0

Percentage of Visits for Influenza-like Illness (ILI) per week

Overall ILI % (ILI visits per week / Total visits per week)

(ILI) in IHS, 03/23/2009

through 10/06/2012



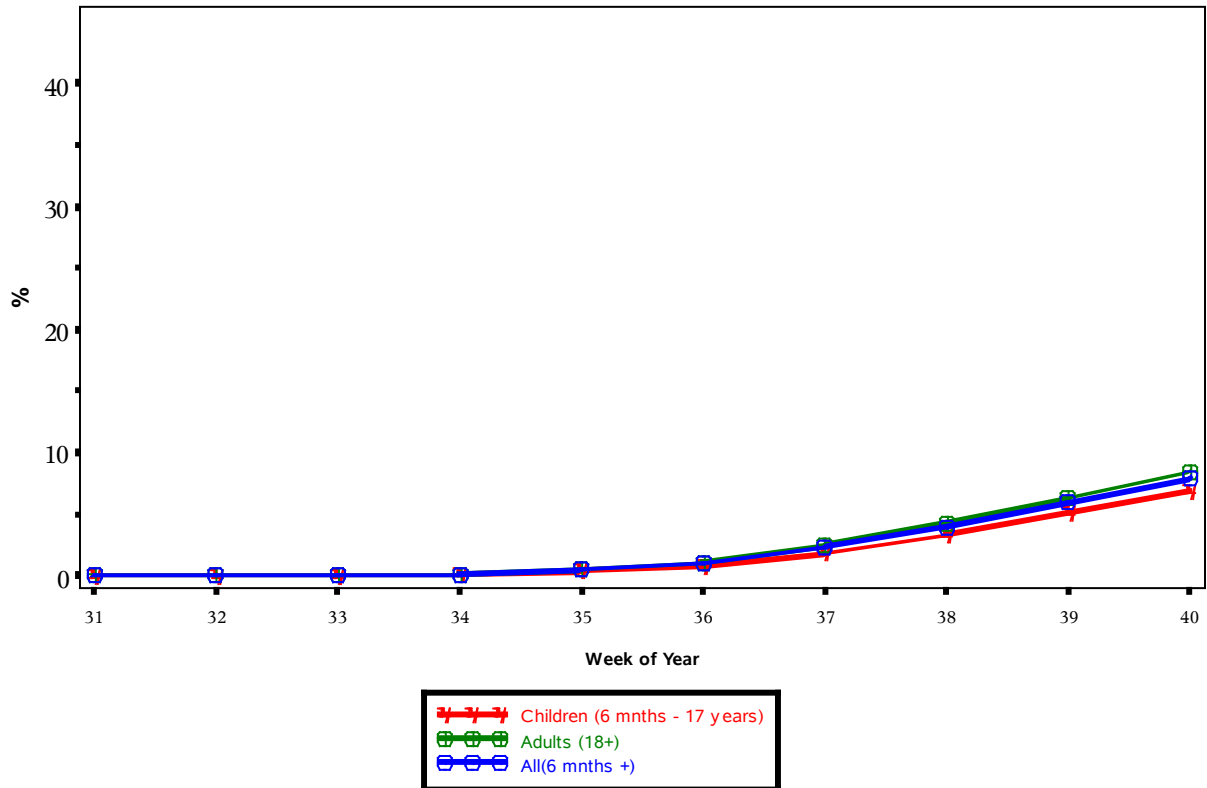
All data are preliminary and may change as more reports are received.

The baseline is the mean percentage of patient visits for ILI during non-influenza weeks for the previous two seasons plus two standard deviations.

IHS Influenza Vaccination Surveillance

- As of 10/6/2012, sites reporting to the IIAS have administered 107,487 doses (1st and 2nd) of seasonal influenza vaccine to Active Clinical* patients.

Influenza Vaccine Coverage, IHS Influenza Awareness System Weeks 31 (07/29/2012) through 40 (10/06/2012), 2012 - 2013



(Active Clinical Population covered by the IIAS)
(*Includes all doses administered.)

Influenza Vaccination Coverage by Age Group

Age Group	Active Clinical Population	Seasonal Flu Vaccine (1 Dose)	% Seasonal Flu (1 Dose)	Seasonal Flu Vaccine (2 Dose)	% Seasonal Flu (2 Dose)
6 - 23 months	29,651	3,899	13.1	215	0.7
2 - 4 years	76,230	5,624	7.4	212	0.3
5 - 17 years	262,598	17,802	6.8	.	.
18 - 49 years	565,282	38,408	6.8	.	.
50 - 64 years	208,077	24,625	11.8	.	.
65 + years	114,109	16,702	14.6	.	.
Children (6 months - 17 years)	368,479	27,325	7.4	.	.
Adults (18 + years)	887,468	79,735	9.0	.	.
All (6 months +)	1,255,947	107,060	8.5	.	.

* Active Clinical population is defined as patients who have had at least 2 visits in the last 3 years

** Limited to sites that exported both doses administered and active clinical population data

Influenza Vaccination Coverage by Influenza Vaccination Type

	!CVX 15 Flu HX	!CVX 16 Flu Whole	!CVX 88 Flu NOS	CVX 111 Flu-Nasal	CVX 135 Flu-High	CVX 140 Flu P-free	CVX 141 Flu	CVX 144 Flu-Intraderm	Proc 99.52 Vac Inf	ICD-9 V04.81 Vac Flu	CPT Billing Codes	Cumulative # of Doses Seasonal Flu
ABD	1119	.	6	890	149	2332	6326	4	.	486	70	11382
AK	2	.	3	14	141	1346	486	.	141	16	41	2190
ABQ	71	.	3	45	177	1003	3340	.	.	35	54	4728
BEM	6	1	69	33	3	238	951	.	.	7	8	1316
BIL	33	.	9	515	274	2672	3392	4	.	43	69	7011
CA	136	.	14	400	236	683	3710	283	.	59	51	5572
NASH	1627	9	4	146	4	79	520	16	.	28	25	2458
NAV	61	.	33	431	19	2166	28343	3	11	145	246	31458
OK	4663	2	130	902	608	5410	11406	49	2	358	120	23650
PHX	391	.	26	424	150	5960	6635	21	3	101	148	13859
PORT	42	.	67	412	27	1289	3953	.	.	83	54	5927
TUC	3	.	4	9	.	1673	910	.	.	64	17	2680
Total	8154	12	368	4221	1788	24851	69972	380	157	1425	903	112231

Summary

- This report includes data from the following # of RPMS databases:

IHS Area	# of ILI RPMS Databases Reporting
Aberdeen	17
Alaska	6
Albuquerque	6
Bemidji	4
Billings	8
California	17
Nashville	13
Navajo	8
Oklahoma	22
Phoenix	19
Portland	20
Tucson	1
All Areas	141

- Nationwide, ILI is low.
- Influenza vaccination is underway.