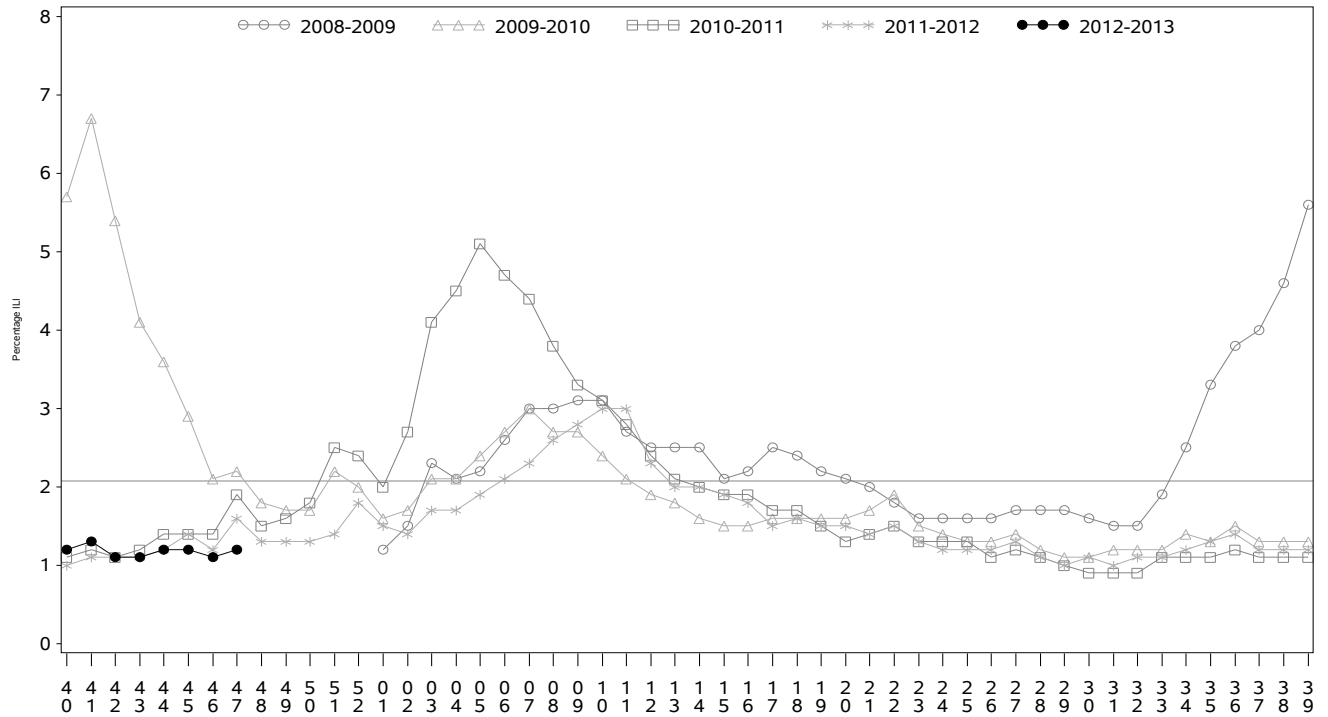




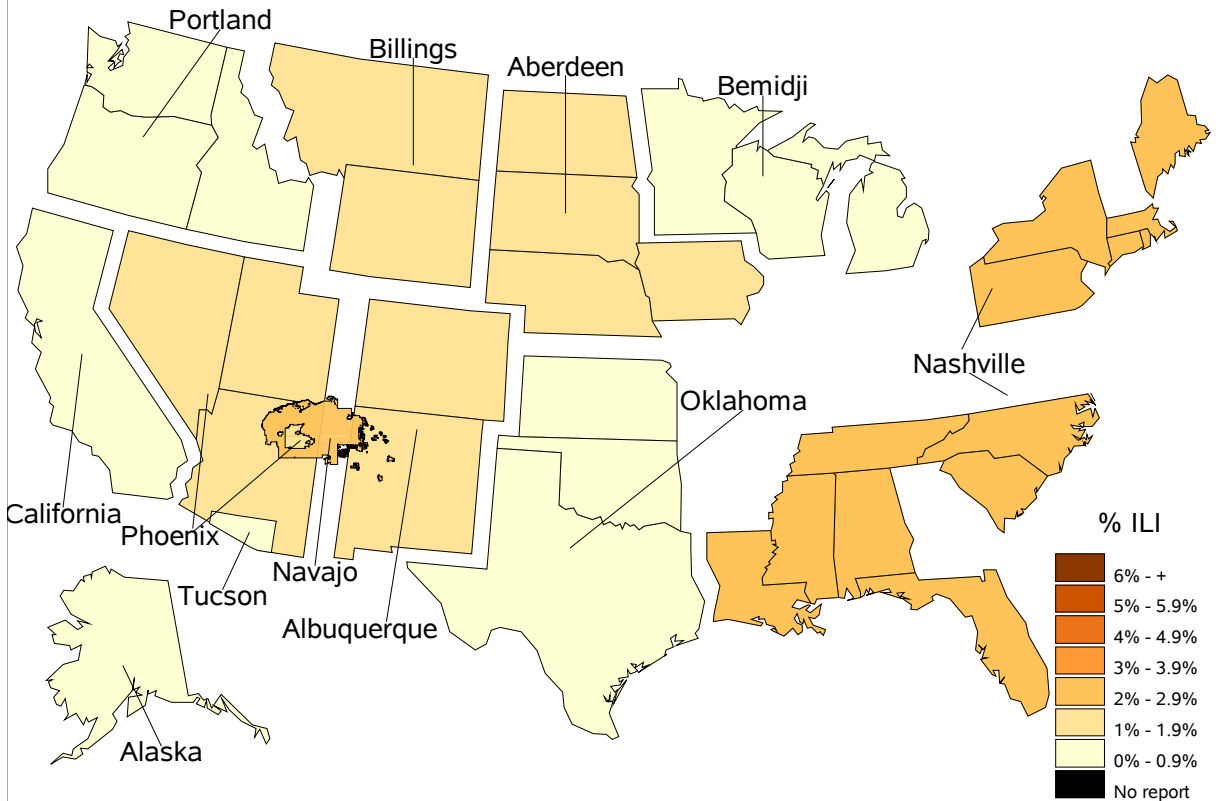
Indian Health Service
 Division of Epidemiology and Disease Prevention
 Influenza Surveillance Report
IHS Influenza Awareness System (IIAS)
#8 (Week 47: 11/18/2012 – 11/24/2012)

All IHS Areas
 Influenza-Like Illness (ILI) for All Surveillance Years
 Percentage of Visits for ILI per week
 01/04/09 to 11/24/12



Percentage of ILI visits is number of ILI visits divided by total number of daily visits.
 The horizontal line represents the 2012-2013 baseline. The baseline is the mean percentage of patient visits for
 ILI during non-influenza weeks for the previous three seasons plus two standard deviations.

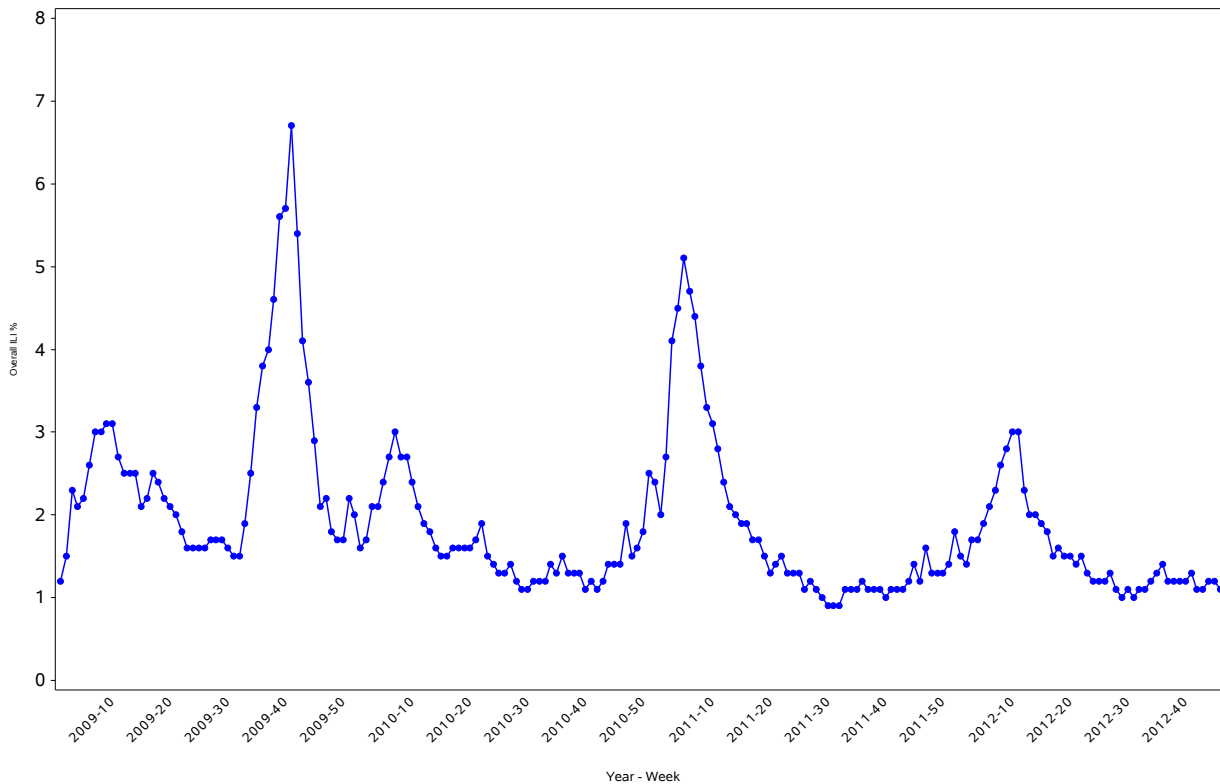
Percentage of Influenza-Like Illness Visits by Region For Week: 47



Percent ILI Visits Current week compared to previous week

IHS Areas	% in Week 46	% in Week 47
NATIONAL	1.1	1.2
ABERDEEN	1.3	1.9
ALASKA	0.5	0.2
ALBUQUERQUE	0.9	1.1
BEMIDJI	0.7	0.9
BILLINGS	0.8	1.0
CALIFORNIA	0.6	0.7
NASHVILLE	1.5	2.3
NAVAJO	2.1	2.3
OKLAHOMA	0.7	0.6
PHOENIX	1.4	1.2
PORTLAND	0.5	0.3
TUCSON	1.4	0.7

All IHS Areas
 Influenza-Like Illness (ILI) All Surveillance Years - Continuous
 Percentage of Visits for ILI per week
 01/04/09 to 11/24/12

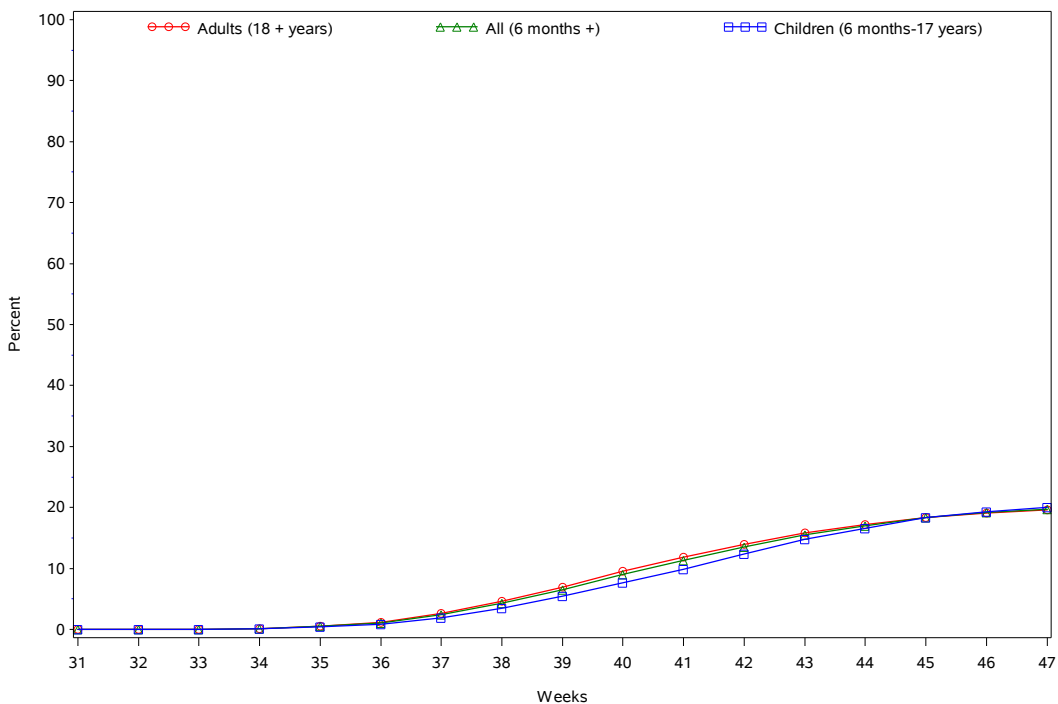


Percentage of ILI visits is number of ILI visits divided by total number of daily visits.

IHS Influenza Vaccination Surveillance

- As of 11/24/2012, sites reporting to the IIAS have administered over 270,000 doses (1st and 2nd) of seasonal influenza vaccine. Coverage estimates below exclude sites that did not provide Active Clinical User * denominator data.

All IHS Areas
 Cumulative One-Dose Seasonal Influenza Vaccine Coverage
 08/01/12 to 11/24/12
 Active Clinical Population



Influenza Vaccination Coverage by Age Group**

Age Group	Active Clinical Population*	Seasonal Flu Vaccine (1 Dose)	% Seasonal Flu (1 Dose)	Seasonal Flu Vaccine (2 Dose)	% Seasonal Flu (2 Dose)
0 - 5 months	5,676	240	4.2	175	3.1
6 - 23 months	29,908	9,271	31.0	1,718	5.7
2 - 4 years	76,762	13,879	18.1	928	1.2
5 - 17 years	264,367	51,123	19.3	.	.
18 - 49 years	570,622	87,342	15.3	.	.
50 - 64 years	210,630	53,592	25.4	.	.
65 + years	115,256	34,894	30.3	.	.
Children (6 months-17 years)	371,037	74,273	20.0	.	.
Adults (18 + years)	896,508	175,828	19.6	.	.
All (6 months +)	1,267,545	250,101	19.7	.	.

* Active Clinical population is defined as patients who have had at least 2 visits in the last 3 years

** Limited to sites that exported both doses administered and active clinical population data. Total doses in table may not equal total doses administered.

Influenza Vaccination Coverage by Influenza Vaccination Type

Area	CVX 15 Flu HX*	CVX 16 Flu Whole*	CVX 88 Flu NOS**	CVX 111 Flu-Nasal	CVX 135 Flu-High	CVX 140 Flu P-free	CVX 141 Flu	CVX 144 Flu-Intraderm	Proc 99.52 Vac Inf	ICD-9 V04.81 Vac Flu	CPT Billing Codes+	Cumulative # of Doses Seasonal Flu
ABR	2491	.	14	2231	231	4450	16338	17	2	1533	148	27455
AKA	249	.	10	437	52	4450	4931	37	316	53	819	11354
ALB	328	.	150	491	250	2088	8181	.	.	96	127	11711
BEM	192	5	211	406	30	1206	5565	2	.	506	58	8181
BIL	60	.	87	1951	470	7730	7379	5	.	122	205	18009
CAO	261	.	144	979	456	1937	9349	682	.	233	166	14207
NSA	3419	11	242	383	6	1430	2619	93	.	228	94	8525
NAV	97	.	170	1114	23	4244	47015	5	17	168	637	53490
OKC	13500	3	940	2837	1264	11299	32384	284	23	944	416	63894
PHX	801	.	99	2265	476	11986	20274	56	5	242	427	36631
POR	117	1	313	1232	182	2379	12036	24	.	229	226	16739
TUC	3	.	9	40	1	3847	1917	.	1	120	78	6016
	21518	20	2389	14366	3441	57046	167988	1205	364	4474	3401	276212

* CVX Codes 15 and 16 should not be used to document flu vaccines given this flu season.

** CVX Code 88 should only be used to document flu vaccines given elsewhere when flu vaccine type is unknown.

+ CPT Flu codes include: 90654 90655 90656 90657 90658 90659 90660 90661 90662 90724 G0008 G8108.

Exporting Databases and Facilities

* Includes Hospitals, Health facilities, Alaska Native Village clinics, and Other Health Locations.

IHS Area	# of RPMS Databases Reporting*	# of Facilities Reporting**
NATIONAL	150	326
ABERDEEN	17	31
ALASKA	8	61
ALBUQUERQUE	6	8
BEMIDJI	4	12
BILLINGS	13	26
CALIFORNIA	19	37
NASHVILLE	15	20
NAVAJO	6	28
OKLAHOMA	22	43
PHOENIX	18	29
PORTLAND	21	25
TUCSON	1	6

* Exporting databases may include data from multiple facilities.

** Includes only facility categories: Hospital, Health Center, Health Station, Health Location, Alaska Village Clinic.