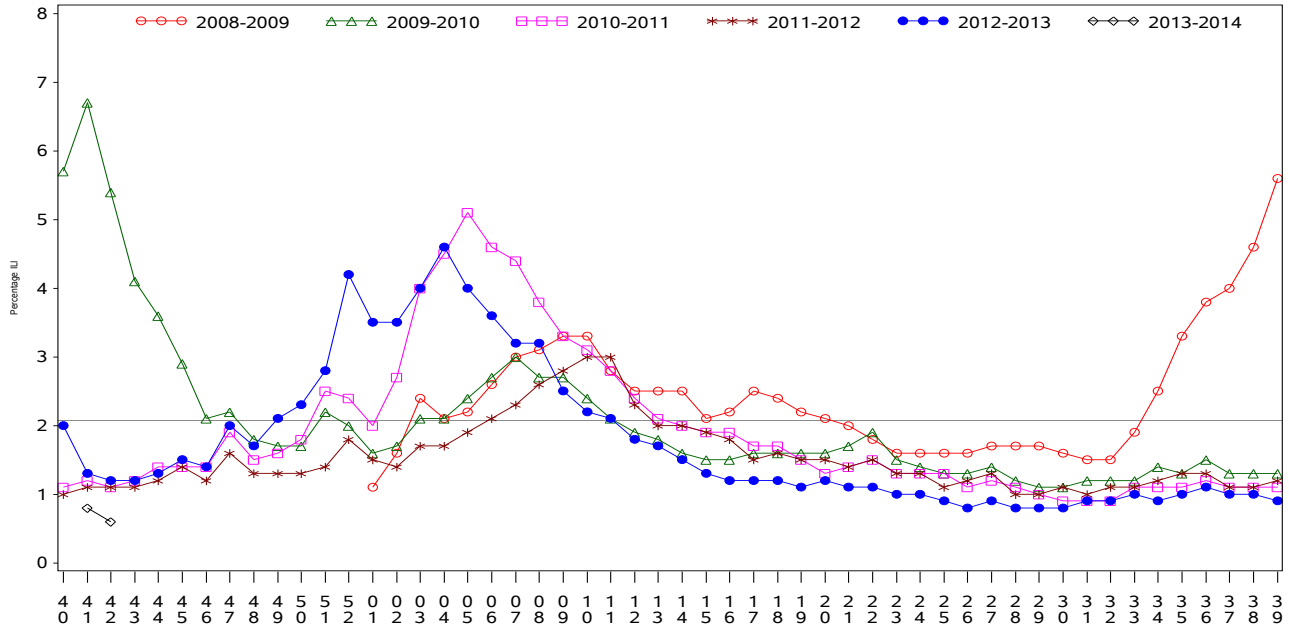




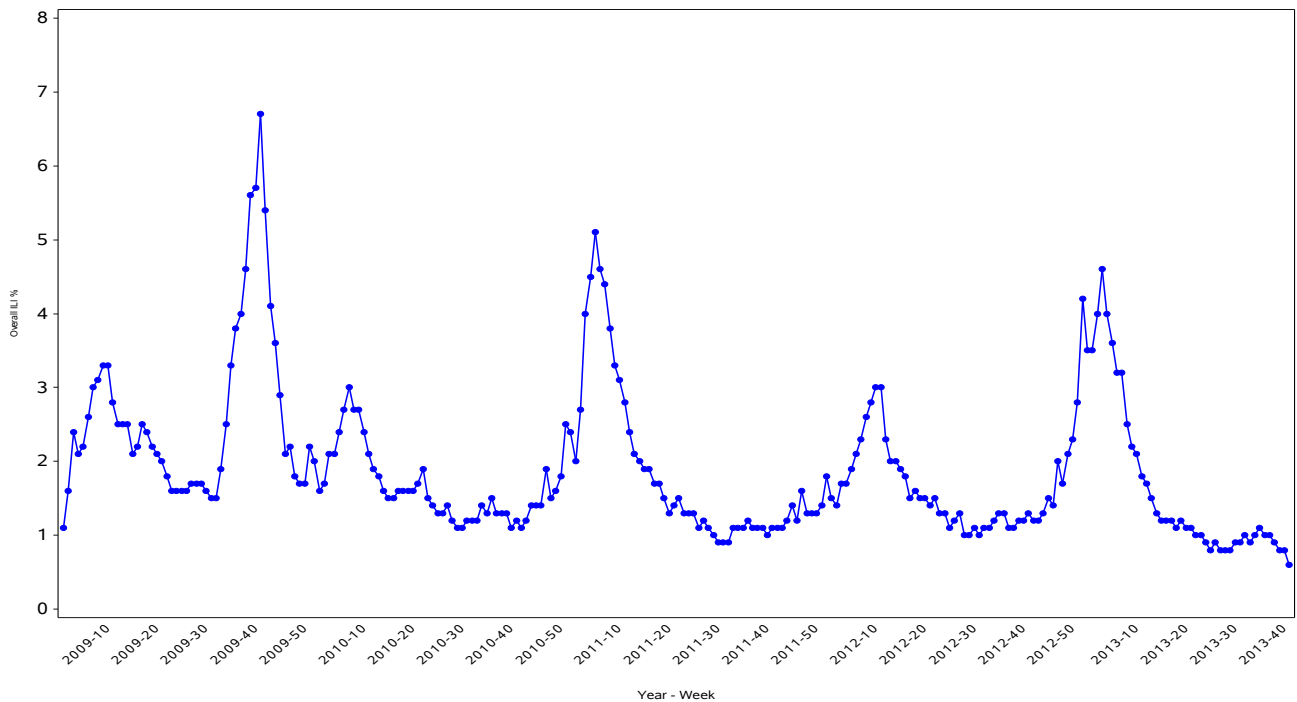
**Indian Health Service**  
 Division of Epidemiology and Disease Prevention  
**Influenza Surveillance Report**  
**IHS Influenza Awareness System (IIAS)**  
**#3 (Week 42: 10/13/2013 – 10/19/2013)**

All IHS Areas  
 Influenza-Like Illness (ILI) for All Surveillance Years  
 Percentage of Visits for ILI per week  
 01/04/09 to 10/19/13



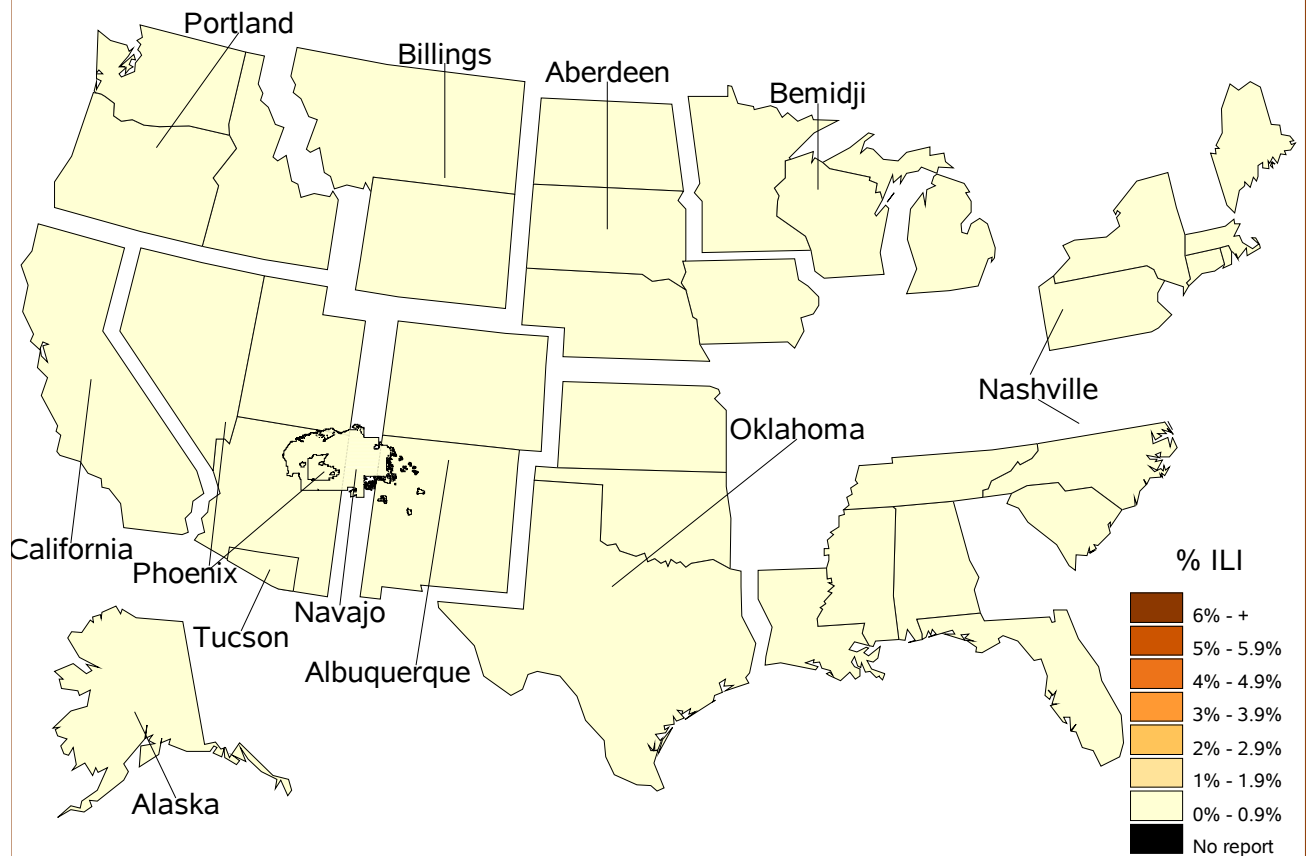
Percentage of ILI visits is number of ILI visits divided by total number of daily visits.  
 The horizontal line represents the 2012-2013 baseline. The baseline is the mean percentage of patient visits for ILI during non-influenza weeks for the previous three seasons plus two standard deviations.

All IHS Areas  
 Influenza-Like Illness (ILI) All Surveillance Years - Continuous  
 Percentage of Visits for ILI per week  
 01/04/09 to 10/19/13



Percentage of ILI visits is number of ILI visits divided by total number of daily visits.

## Percentage of Influenza-Like Illness Visits by Region For Week: 42

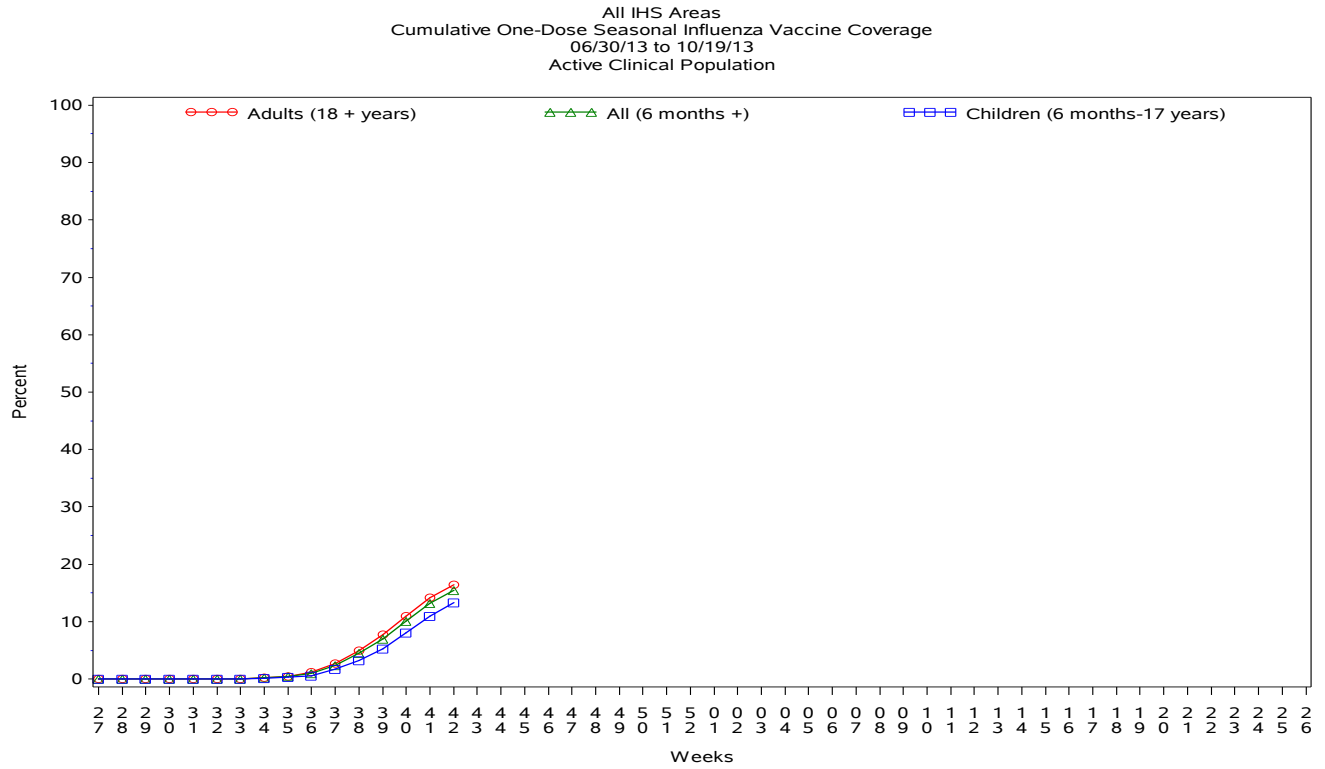


### % Visits for ILI Compared to Previous Week

IHS Areas	% in Week 41	% in Week 42
NATIONAL	0.8	0.6
ABERDEEN	1.0	0.7
ALASKA	0.6	0.6
ALBUQUERQUE	0.7	0.5
BEMIDJI	0.7	0.4
BILLINGS	1.0	0.8
CALIFORNIA	0.3	0.4
NASHVILLE	0.8	0.6
NAVAJO	1.2	0.9
OKLAHOMA	0.6	0.3
PHOENIX	0.9	0.8
PORTLAND	0.4	0.5
TUCSON	0.5	0.6

## IHS Influenza Vaccination\* Surveillance

- As of 10/19/2013, sites reporting to the IIAS have administered 176,569 doses (1st and 2nd) of seasonal influenza vaccine to Active Clinical patients.



**\* The IIAS currently does not capture some of the newer influenza vaccine codes; vaccine coverage reported here is an underestimate.**

## Influenza Vaccination Coverage by Age Group\*

	Active Clinical Population**	Seasonal Flu Vaccine (At Least 1 Dose)***	% Seasonal Flu (At Least 1 Dose)	Seasonal Flu Vaccine (At Least 2 Doses)	% Seasonal Flu (At Least 2 Doses)	Total # Doses Administered
0 - 5 months	5,153	39	0.8	.	.	39
6 - 23 months	26,263	5,527	21.0	175	0.7	5,718
2 - 4 years	64,503	8,066	12.5	45	0.1	8,139
5 - 17 years	234,044	29,710	12.7	135	0.1	29,940
18 - 49 years	501,896	61,972	12.3	362	0.1	62,727
50 - 64 years	191,178	40,950	21.4	294	0.2	41,481
65 + years	104,604	28,131	26.9	192	0.2	28,564
Children (6 months-17 years)	324,810	43,303	13.3	355	0.1	43,797
Adults (18 + years)	797,678	131,053	16.4	848	0.1	132,772
All (6 months +)	1,122,488	174,356	15.5	1,203	0.1	176,569

\*Data on the new influenza vaccines are not currently captured in the IIAS: therefore these are underestimates

\*\* Active Clinical population is defined as patients who have had at least 2 visits in the last 3 years

\*\*\* Limited to sites that exported both doses administered and active clinical population data

## Influenza Vaccination Doses Administered by Influenza Vaccination Type\*

Area	Inactive CVX Codes**	CVX 88 FLU-NOS**	CVX 111 FLU-LAIV3	CVX 135 FLU-HIGH	CVX 140 FLU-IIV3pf	CVX 141 FLU-IIV3	CVX 144 FLU-DERMAL	CVX 149 FLU-LAIV4	CVX 150 FLU-IIV4pf	CVX 153 FLU-ccIIV3	CVX 155 FLU-RIV3	CVX 158 IIV4	Proc 99.52 Vac Inf	ICD-9 V04.81 Vac Inf	CPT Billing Codes	Cumulative # of Doses Seasonal Flu
ABR	6	79	8	208	2458	8493	35	.	.	.	.	.	1	2200	388	13876
AKA	20	19	23	91	729	2964	.	.	.	.	.	.	.	306	164	4316
ALB	4	54	4	448	1923	9176	193	.	.	.	.	.	.	453	828	13083
BEM	35	44	137	34	1231	4345	27	.	.	.	.	.	.	821	279	6953
BIL	3	26	24	706	6287	2955	181	.	.	.	.	.	1	900	551	11634
CAO	26	47	17	337	841	4961	5	.	.	.	.	.	.	608	157	6999
NSA	15	14	4	59	453	2207	346	.	.	.	.	.	.	88	35	3221
NAV	16	95	26	29	2530	43549	.	.	.	.	.	.	12	785	1349	48391
OKC	122	332	77	1161	6062	27948	86	.	.	.	.	.	1	3460	514	39763
PHX	79	86	28	383	7631	7849	31	.	.	.	.	.	6	1603	1306	19002
POR	19	96	273	192	1456	8296	17	.	.	.	.	.	.	873	434	11656
TUC	5	10	80	1	2598	807	.	.	.	.	.	.	.	382	259	4142
	<b>350</b>	<b>902</b>	<b>701</b>	<b>3649</b>	<b>34199</b>	<b>123550</b>	<b>921</b>	<b>0</b>	<b>0</b>	<b>0</b>	<b>0</b>	<b>0</b>	<b>21</b>	<b>12479</b>	<b>6264</b>	<b>183036</b>

\* Data on the new influenza vaccines are not currently captured in the IIAS: therefore doses administered data are underestimated

\*\* Inactive CVX Codes 15 (FLU-TIVhx), 16 (FLU-WHOLE), 123 (FLU-H5N1), and 151 (FLU-NasNOS) should not be used to document flu vaccines given this flu season.

\*\*\* CVX Code 88 (FLU-NOS) should only be used to document flu vaccines given elsewhere when flu vaccine type is unknown.

## Summary

- This report includes data from the following # of RPMS databases:

<b>IHS Area</b>	<b># of RPMS Databases Reporting*</b>	<b># of Facilities Reporting**</b>
NATIONAL	176	411
ABERDEEN	15	26
ALASKA	11	84
ALBUQUERQUE	13	23
BEMIDJI	17	29
BILLINGS	13	29
CALIFORNIA	16	24
NASHVILLE	15	18
NAVAJO	9	56
OKLAHOMA	24	48
PHOENIX	17	28
PORTLAND	25	35
TUCSON	1	11

- Nationwide, ILI is low.
- Influenza vaccination is underway.