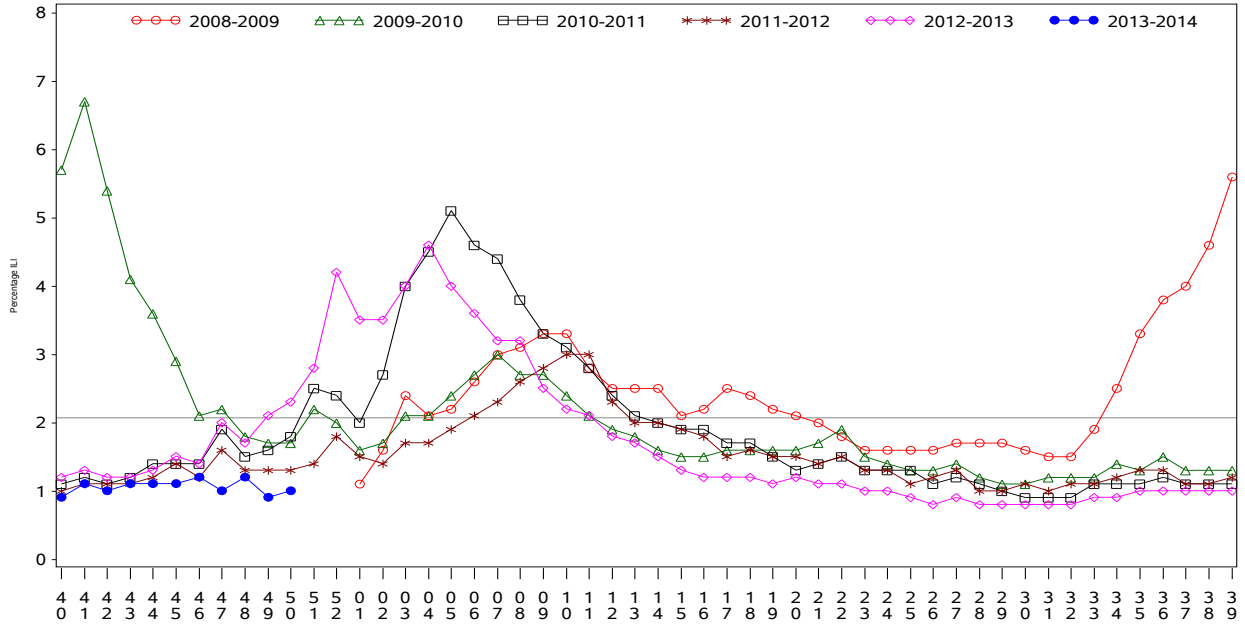




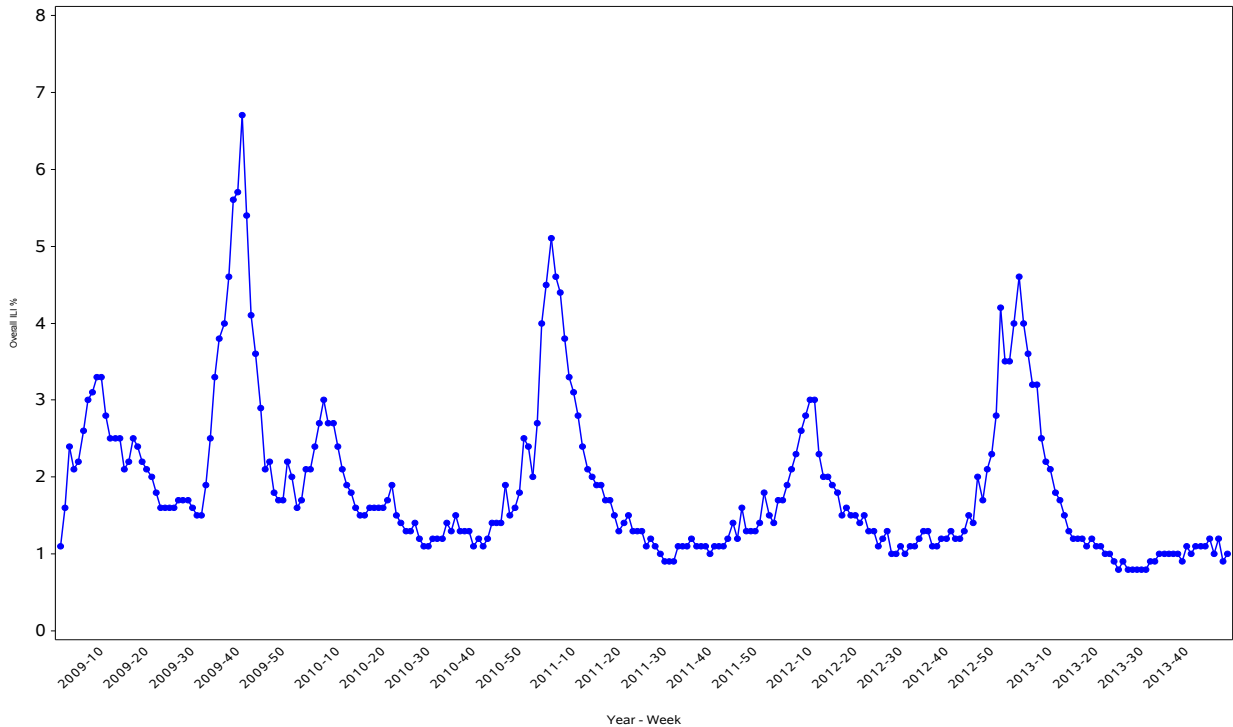
Indian Health Service
 Division of Epidemiology and Disease Prevention
Influenza Surveillance Report
IHS Influenza Awareness System (IIAS)
#11 (Week 50: 12/08/2013 – 12/14/2013)

All IHS Areas
 Influenza-Like Illness (ILI) for All Surveillance Years
 Percentage of Visits for ILI per week
 01/04/09 to 12/14/13



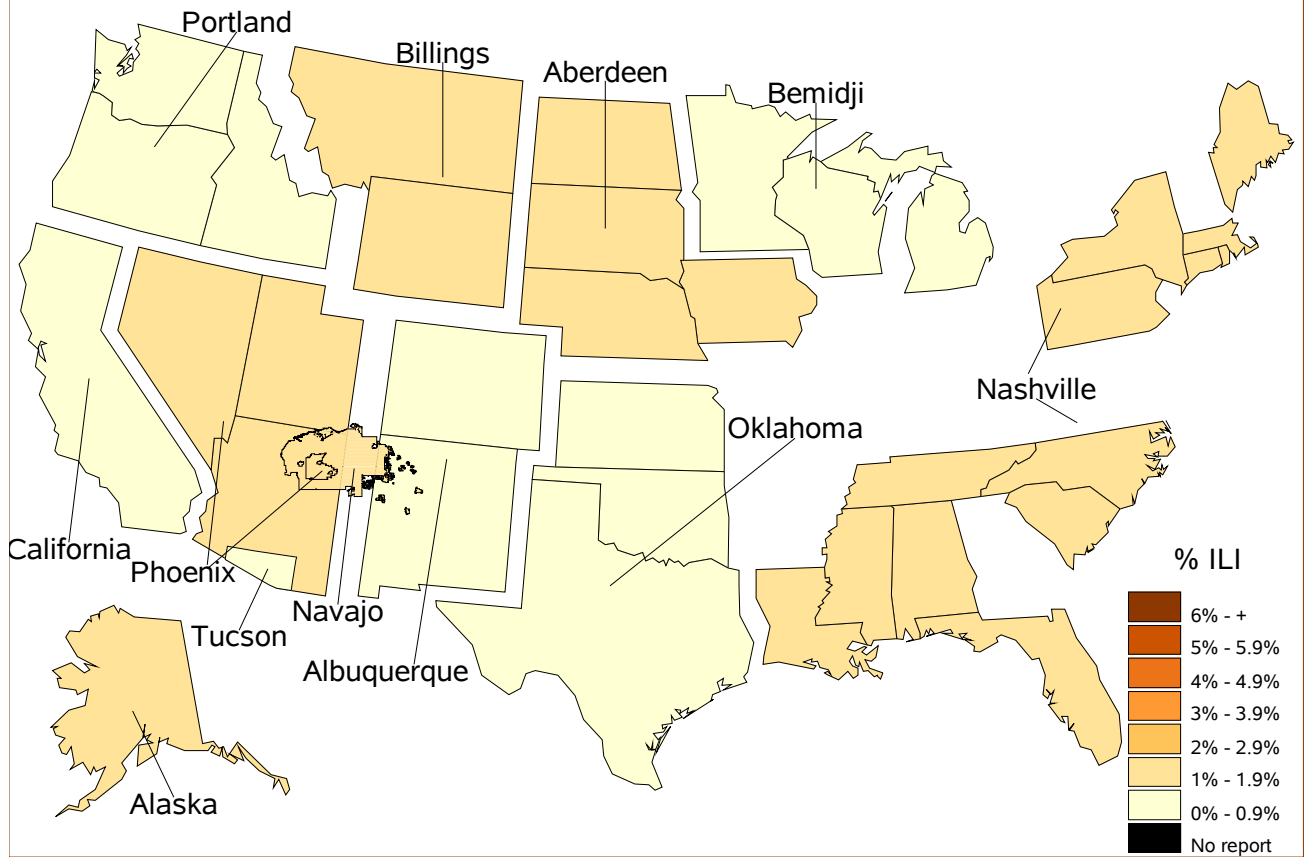
Percentage of ILI visits is number of ILI visits divided by total number of daily visits.
 The horizontal line represents the 2012-2013 baseline. The baseline is the mean percentage of patient visits for ILI during non-influenza weeks for the previous three seasons plus two standard deviations.

All IHS Areas
 Influenza-Like Illness (ILI) All Surveillance Years - Continuous
 Percentage of Visits for ILI per week
 01/04/09 to 12/14/13



Percentage of ILI visits is number of ILI visits divided by total number of daily visits.

Percentage of Influenza-Like Illness Visits by Region For Week: 50

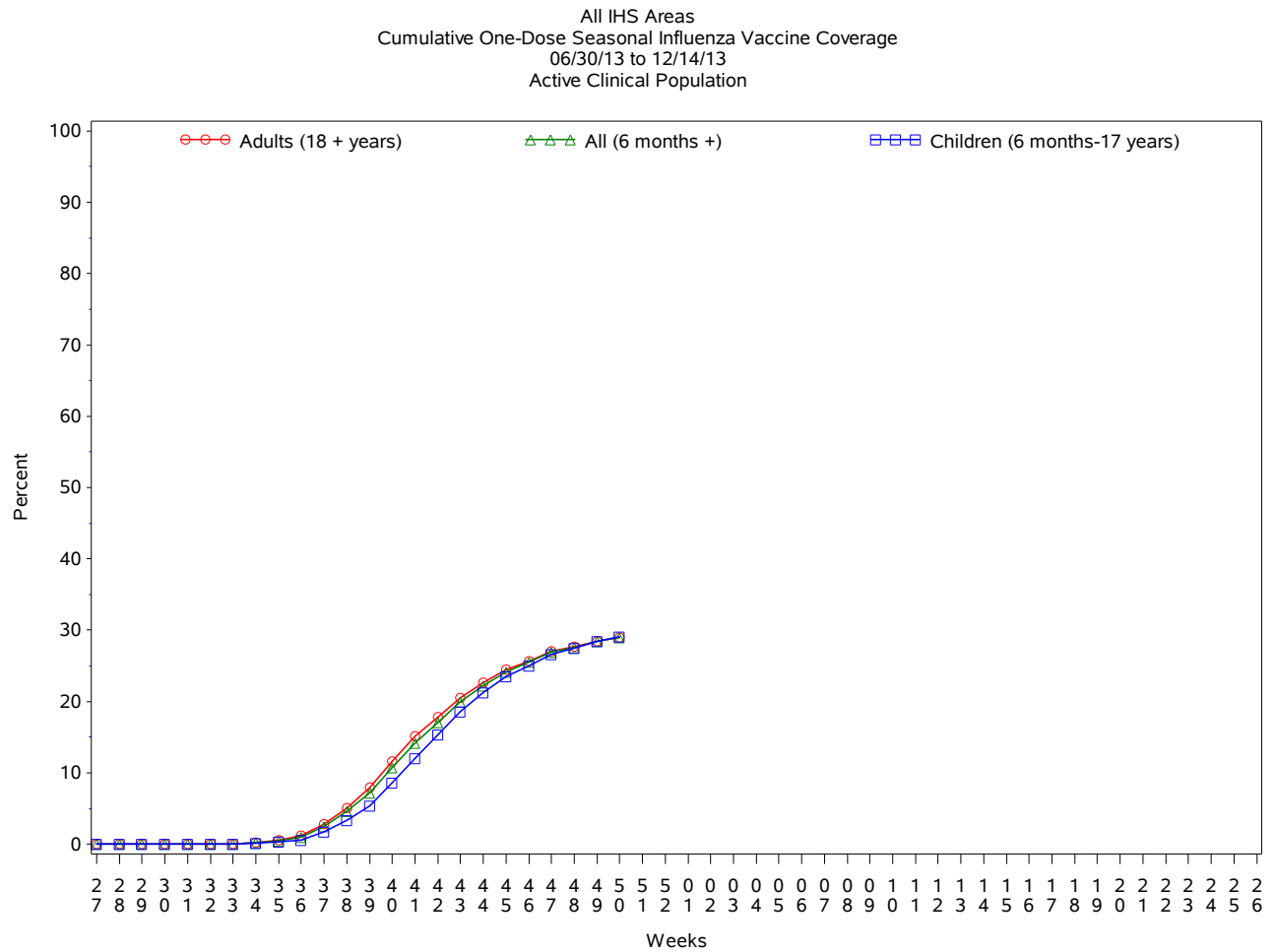


% Visits for ILI Compared to Previous Week

IHS Areas	% in Week 49	% in Week 50
NATIONAL	0.9	1.0
ABERDEEN	1.4	1.6
ALASKA	1.3	1.2
ALBUQUERQUE	1.0	0.9
BEMIDJI	1.0	0.4
BILLINGS	0.7	1.1
CALIFORNIA	0.6	0.3
NASHVILLE	1.2	1.9
NAVAJO	1.6	1.4
OKLAHOMA	0.6	0.4
PHOENIX	0.8	1.1
PORTLAND	0.6	0.8
TUCSON	0.9	0.5

IHS Influenza Vaccination* Surveillance

- As of 12/14/2013, sites reporting to the IIAS have administered 336,835 doses (1st and 2nd) of seasonal influenza vaccine to Active Clinical patients.



* Not all sites are currently sending the newer influenza vaccine codes, which may result in an underestimate of vaccine coverage.

Influenza Vaccination Coverage by Age Group*

	Active Clinical Population**	Seasonal Flu Vaccine (At Least 1 Dose)***	% Seasonal Flu (At Least 1 Dose)	Seasonal Flu Vaccine (At Least 2 Doses)	% Seasonal Flu (At Least 2 Doses)	Total # Doses Administered
0 - 5 months	5,315	70	1.3	.	.	70
6 - 23 months	26,261	11,698	44.5	2,176	8.3	13,916
2 - 4 years	65,011	16,927	26.0	433	0.7	17,413
5 - 17 years	236,113	66,604	28.2	643	0.3	67,470
18 - 49 years	507,031	114,097	22.5	1,072	0.2	115,754
50 - 64 years	194,368	72,528	37.3	777	0.4	73,675
65 + years	106,198	47,692	44.9	573	0.5	48,607
Children (6 months-17 years)	327,385	95,229	29.1	3,252	1.0	98,799
Adults (18 + years)	807,597	234,317	29.0	2,422	0.3	238,036
All (6 months +)	1,134,982	329,546	29.0	5,674	0.5	336,835

* Not all sites are currently sending the newer influenza vaccine codes, which may result in an underestimate of vaccine coverage.

** Active Clinical population is defined as patients who have had at least 2 visits in the last 3 years

*** Limited to sites that exported both doses administered and active clinical population data

Influenza Vaccination Doses Administered by Influenza Vaccination Type*

Area	Inactive CVX Codes**	CVX 88 FLU-NOS** *	CVX 111 FLU-LAIV3	CVX 135 FLU-HIGH	CVX 140 FLU-IIV3pf	CVX 141 FLU-IIV3	CVX 144 FLU-DERMAL	CVX 149 FLU-LAIV4	CVX 150 FLU-IIV4pf	CVX 153 FLU-ccIIV3	CVX 155 FLU-RIV3	CVX 158 IIV4	Proc 99.52 Vac Inf	ICD-9 V04.81 Vac Inf	CPT Billing Codes	Cumulative # of Doses Seasonal Flu
ABR	17	204	40	316	3799	15409	82	1	5102	570	25540
AKA	319	71	52	211	2281	5598	29	285	217	.	1	119	.	964	280	10427
ALB	40	210	19	621	3912	16860	304	1889	827	5	3	40	.	576	1098	26404
BEM	63	123	198	73	1871	6563	94	1076	344	10405
BIL	7	101	34	958	10863	5467	234	1761	862	7	.	10	1	152	265	20722
CAO	49	128	60	554	1587	8760	17	53	38	45	.	3	.	1030	308	12632
NSA	59	45	12	75	2884	3737	428	115	216	.	.	5	.	128	90	7794
NAV	271	290	67	130	5365	76896	2	231	748	.	1	12	26	1195	2915	88149
OKC	296	1885	101	1890	10270	55534	129	2242	3399	2	2	461	217	5000	314	81742
PHX	131	273	54	555	13427	14979	41	457	465	.	.	1	6	3246	2170	35805
POR	89	305	388	404	3188	17227	46	329	.	.	.	1	.	1487	624	24088
TUC	20	24	108	1	4402	1278	898	353	7084
	1361	3659	1133	5788	63849	228308	1406	7362	6772	59	7	652	251	20854	9331	350792

* Not all sites are currently sending the newer influenza vaccine codes, which may result in an underestimate of vaccine coverage.

** Inactive CVX Codes 15 (FLU-TIVhx), 16 (FLU-WHOLE), 123 (FLU-H5N1), and 151 (FLU-NasNOS) should not be used to document flu vaccines given this flu season.

*** CVX Code 88 (FLU-NOS) should only be used to document flu vaccines given elsewhere when flu vaccine type is unknown.

Summary

- This report includes data from the following # of RPMS databases:

IHS Area	# of RPMS Databases Reporting*	# of Facilities Reporting**
NATIONAL	160	355
ABERDEEN	16	28
ALASKA	11	78
ALBUQUERQUE	14	24
BEMIDJI	2	10
BILLINGS	12	26
CALIFORNIA	15	22
NASHVILLE	17	20
NAVAJO	8	35
OKLAHOMA	23	44
PHOENIX	15	25
PORTLAND	26	36
TUCSON	1	7

* Exporting databases may include data from multiple facilities.

** Includes only facility categories: Hospital, Health Center, Health Station, Health Location, Alaska Village Clinic.

- Nationwide, ILI is low.
- Influenza vaccination is underway.