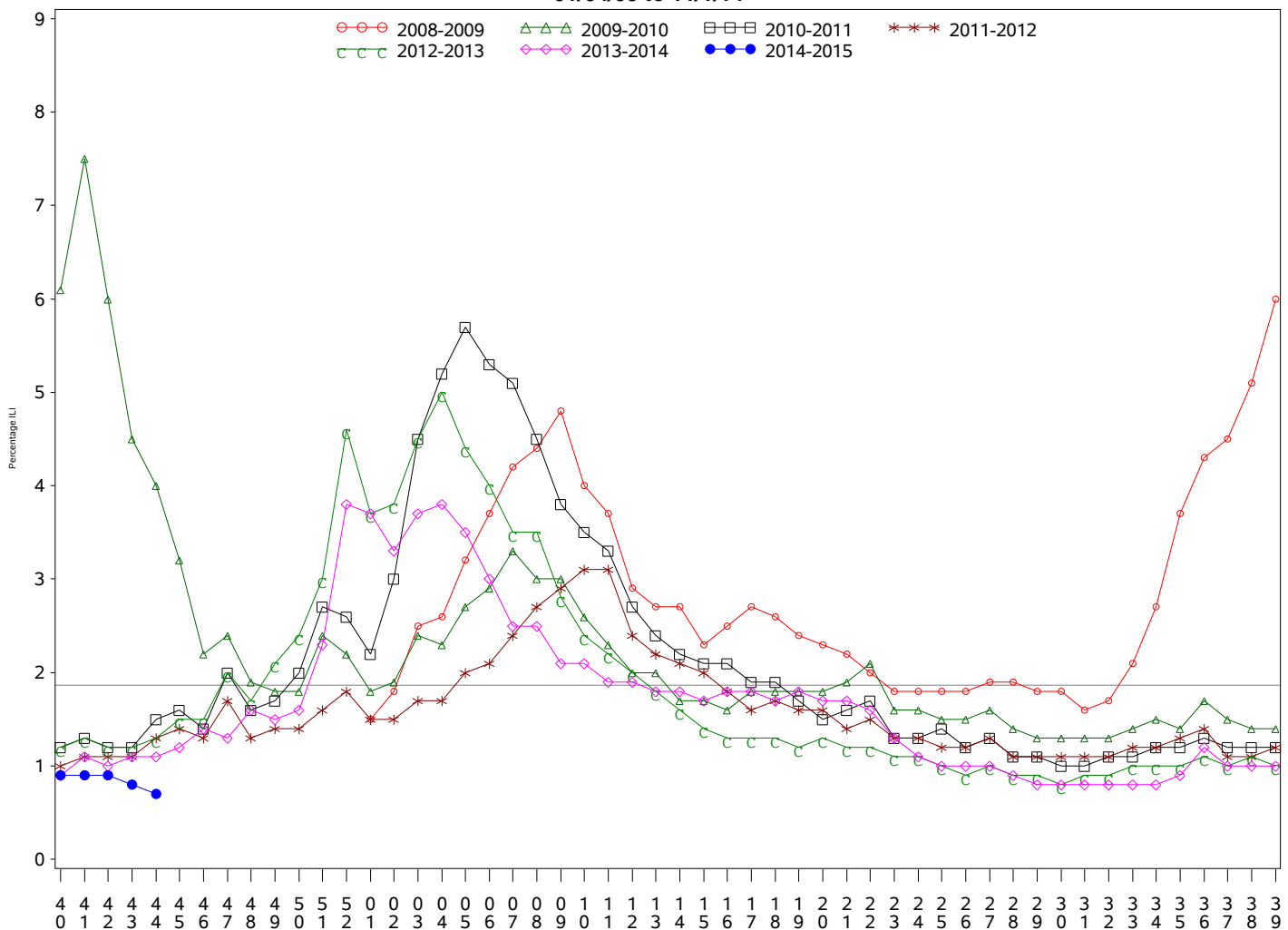




**Indian Health Service**  
 Division of Epidemiology and Disease Prevention  
**Influenza Surveillance Report**  
**IHS Influenza Awareness System (IIAS)**  
**#5 (Week 44: 6/29/2014 – 11/1/2014)**

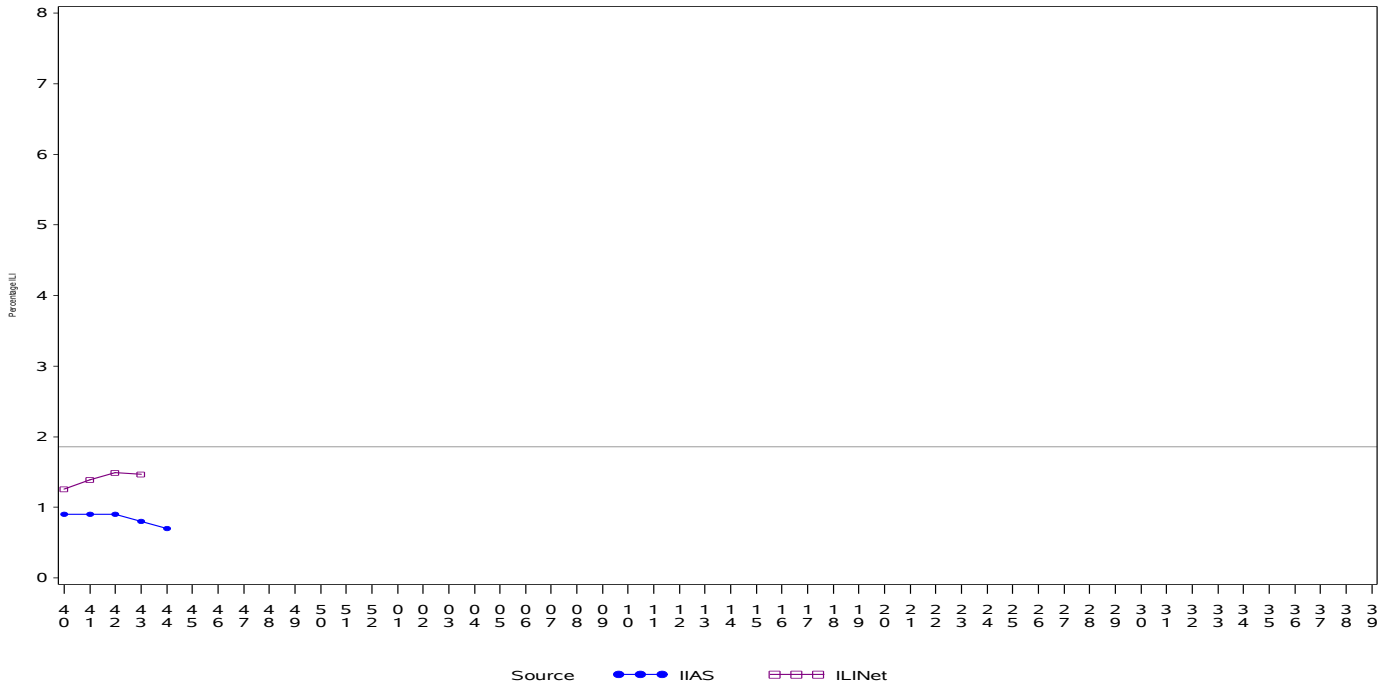
- Overall influenza-like-illness (ILI) activity in IHS and the U.S. is low.
- To date IHS has administered over 222,000 influenza vaccines this season.
- Overall, 18.7% of the IHS Active Clinical population received an influenza vaccine this season.

**All IHS Areas**  
**Influenza-Like Illness (ILI) for All Surveillance Years**  
**Percentage of Visits for ILI per week**  
**01/04/09 to 11/1/14**



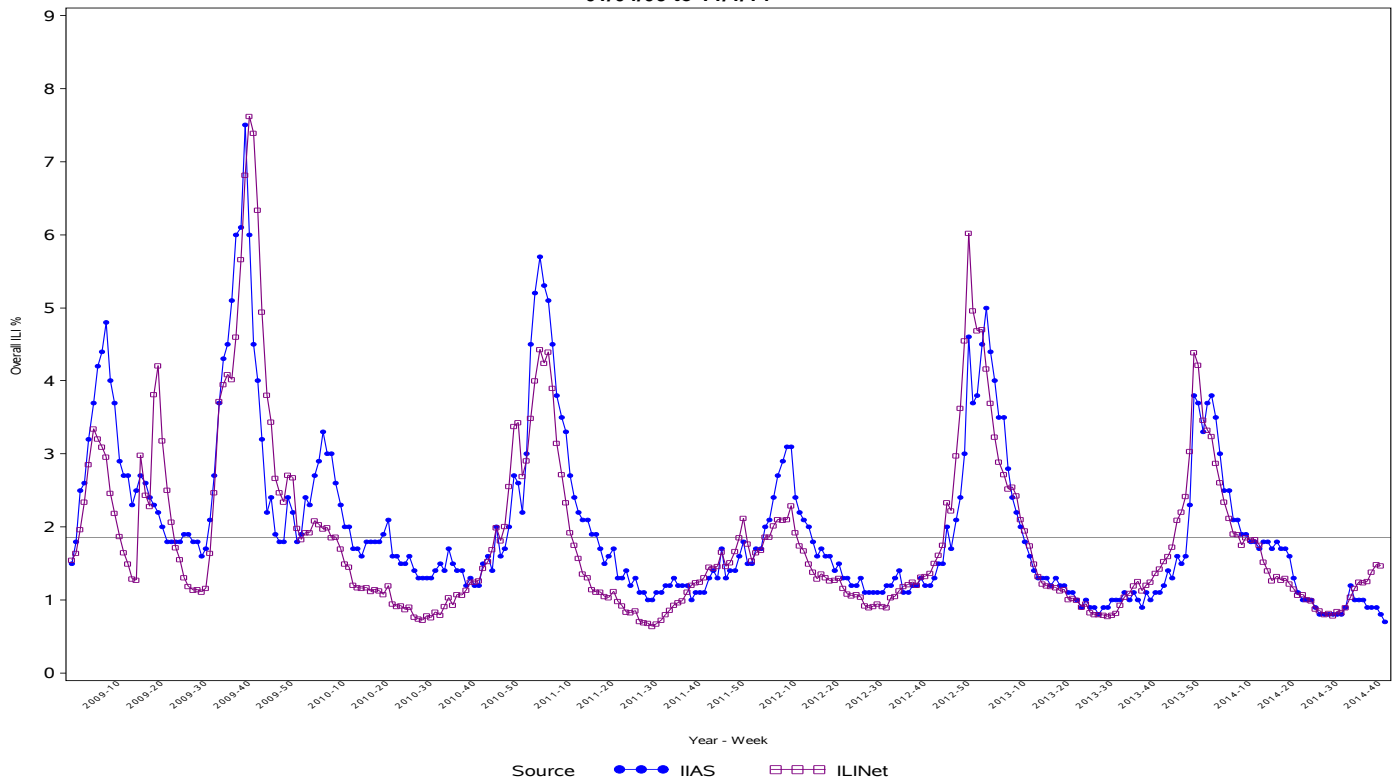
Percentage of ILI visits is number of ILI visits divided by total number of daily visits.  
 The horizontal line represents the 2013-2014 baseline. The baseline is the mean percentage of patient visits for ILI during non-influenza weeks for the previous three seasons plus two standard deviations.

**Proportion of Outpatient Visits for Influenza-Like Illness (ILI)**  
**Percent ILI for FluYear 2014 - 2015**  
**ILINet vs. IIAS**  
**09/28/14 to 11/1/14**



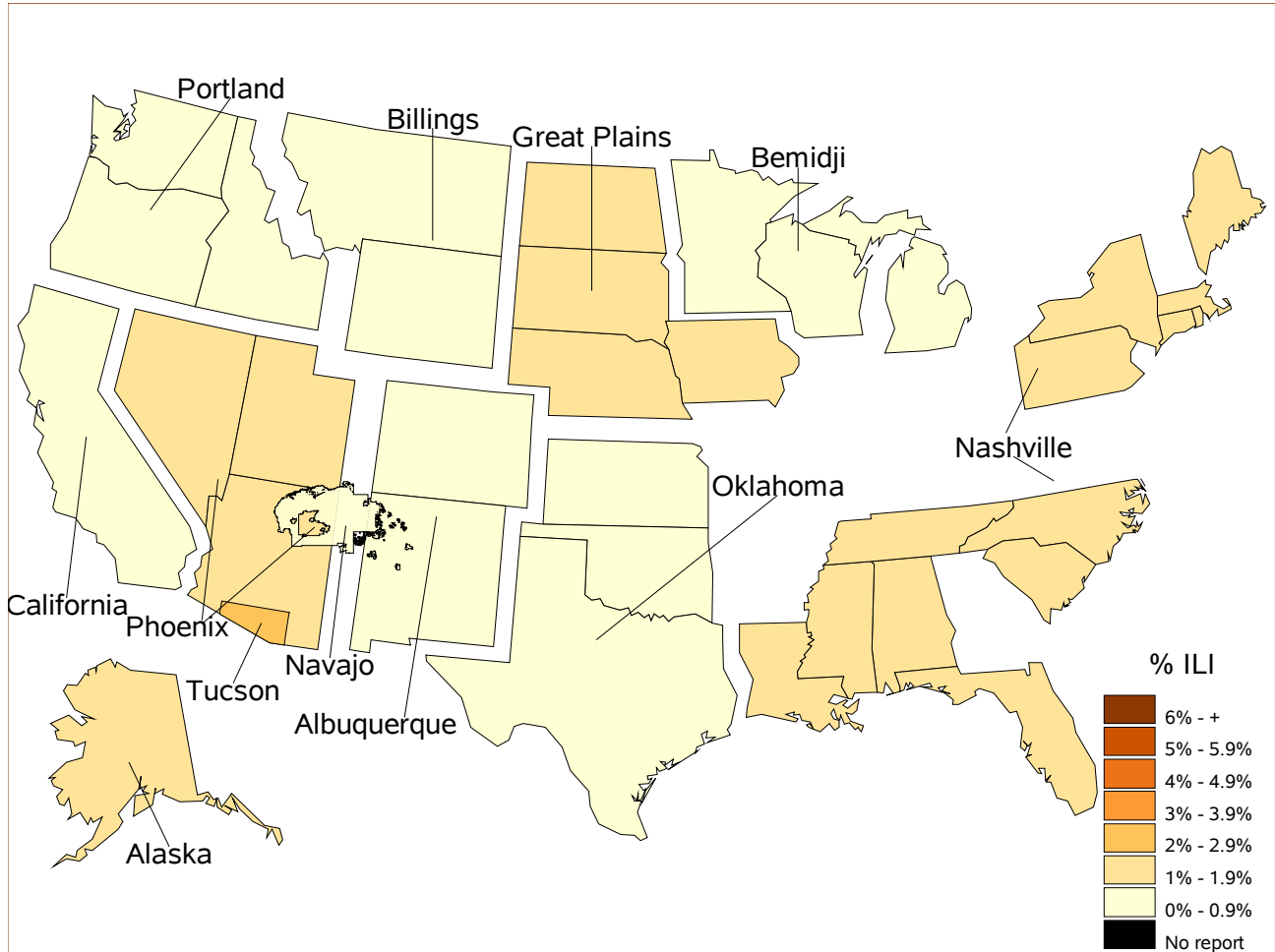
Percentage of ILI visits is number of ILI visits divided by total number of daily visits (outpatient visits).  
 The horizontal line represents the 2013-2014 baseline. The baseline is the mean percentage of patient visits for ILI during non-influenza weeks for the previous three seasons plus two standard deviations.  
 Sources: ILINet - CDC Sentinal Surveillance System for Influenza-Like Illness, IIAS - IHS Influenza Awareness System

**IIAS versus ILINet**  
**Influenza-Like Illness (ILI) All Surveillance Years - Continuous**  
**Percentage of Visits for ILI per week**  
**01/04/09 to 11/1/14**



Percentage of ILI visits is number of ILI visits divided by total number of daily visits (outpatient visits).

**Percentage of Influenza-Like Illness Visits by Region  
For Week: 44**



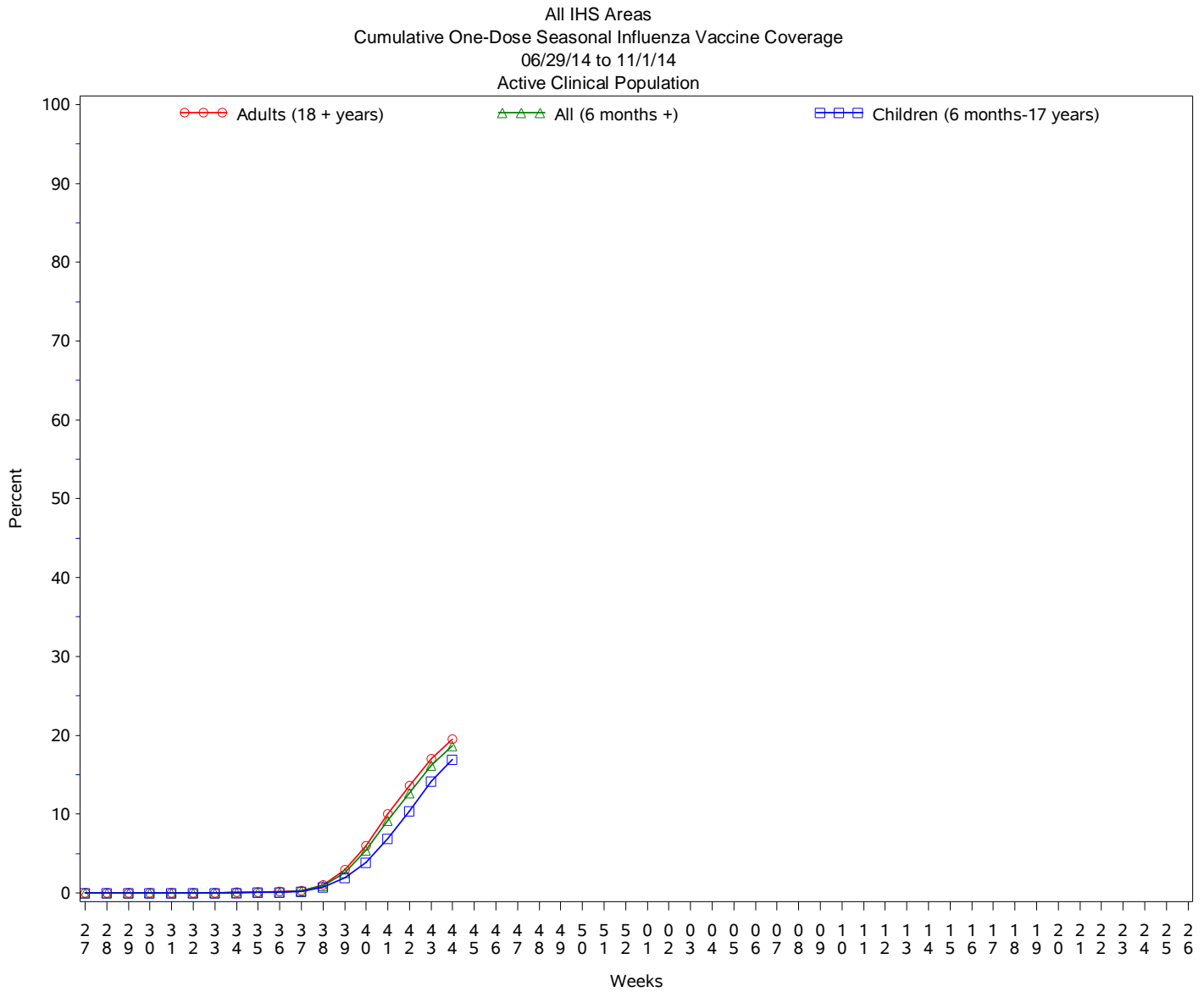
**% Visits for ILI Compared to Previous Week**

IHS Areas	% in Week 43	% in Week 44
NATIONAL	0.8	0.7
ALASKA	0.9	1.0
ALBUQUERQUE	0.5	0.3
BEMIDJI	0.3	0.9
BILLINGS	0.6	0.7
CALIFORNIA	0.4	0.4
GREAT PLAINS	1.7	1.7
NASHVILLE	0.8	1.0
NAVAJO	0.8	0.7
OKLAHOMA	0.5	0.3
PHOENIX	1.2	1.1
PORTLAND	0.5	0.6
TUCSON	1.7	2.2

Percentage of ILI visits is number of ILI visits divided by total number of daily visits.

## IHS Influenza Vaccination\* Surveillance

- As of 11/1/2014, sites reporting to the IIAS have administered 222,459 doses (1st and 2nd) of seasonal influenza vaccine to Active Clinical patients.



## Influenza Vaccination Coverage by Age Group\*

Age Group	Active Clinical Population**	Seasonal Flu Vaccine (At Least 1 Dose)***	% Seasonal Flu (At Least 1 Dose)	Seasonal Flu Vaccine (At Least 2 Doses)	% Seasonal Flu (At Least 2 Doses)	Total #Doses Administered****
0 - 5 months	5,414	49	0.9	4	0.1	53
6 - 23 months	27,100	6,107	22.5	146	0.5	6,264
2 - 4 years	65,496	9,994	15.3	55	0.1	10,078
5 - 17 years	243,592	40,749	16.7	222	0.1	41,118
18 - 49 years	516,728	74,892	14.5	447	0.1	75,649
50 - 64 years	206,364	51,883	25.1	344	0.2	52,453
65 + years	115,122	36,363	31.6	290	0.3	36,897
Children (6 months-17 years)	336,188	56,850	16.9	423	0.1	57,460
Adults (18 + years)	838,214	163,138	19.5	1,081	0.1	164,999
All (6 months +)	1,174,402	219,988	18.7	1,504	0.1	222,459

\* Limited to sites that exported both doses administered and active clinical population data.

\*\* Active Clinical is defined as patients who have had at least 2 visits in the last 3 years.

\*\*\* Number of unique patients with at least 1 dose.

\*\*\*\* Total # Doses Administered = All doses administered to patients including doses not included in coverage calculation due to lack of Active Clinical Population data.

## Influenza Vaccination Doses Administered by Influenza Vaccination Type\*

Area	Inactive CVX Codes*	CVX 88 FLU-NOS**	CVX 111 FLU-LAIV3	CVX 135 FLU-HIGH	CVX 140 FLU-IIV3pf	CVX 141 FLU-IIV3	CVX 144 FLU-Dermal	CVX 149 FLU-LAIV4	CVX 150 FLU-IIV4pf	CVX 153 FLU-cclIIV3	CVX 155 FLU-RIV3	CVX 158 IIV4	CVX 161 IIV4pf-ped	Proc 99.52 Vac Inf	ICD-9 V04.81 Vac Inf	CPT Billing Codes+	Cumulative # of Doses Seasonal Flu
AKA	20	21	2	245	16	2063	.	343	839	65	3	2816	.	.	107	51	6591
ALB	32	94	8	777	178	7885	101	1436	3306	.	.	1528	.	.	99	100	15544
BEM	67	143	11	228	271	5782	10	702	1077	1	1	167	.	.	494	59	9013
BIL	90	37	3	698	139	2785	.	1294	6473	.	.	403	.	.	64	91	12077
CAO	60	93	3	733	533	7972	345	1158	1888	1	1	654	.	.	181	188	13810
GPA	25	51	10	345	285	7987	44	2026	4502	3	1	2426	.	1	686	43	18435
NSA	165	69	.	116	67	3765	295	453	1402	.	1	273	.	16	57	116	6795
NAV	41	119	2	237	493	45435	.	2080	3226	.	.	1838	.	1	250	290	54012
OKC	70	628	40	2411	109	29320	177	3022	13436	1	.	1999	.	86	452	68	51819
PHX	24	214	2	850	51	8757	89	2185	10386	.	3	1209	.	3	200	403	24376
POR	114	225	26	516	784	6576	226	1690	3343	9	4	2571	1	.	272	341	16698
TUC	.	17	1	1	2	29	1	237	3748	.	.	619	.	1	71	8	4735
	<b>708</b>	<b>1711</b>	<b>108</b>	<b>7157</b>	<b>2928</b>	<b>128356</b>	<b>1288</b>	<b>16626</b>	<b>53626</b>	<b>80</b>	<b>14</b>	<b>16503</b>	<b>1</b>	<b>108</b>	<b>2933</b>	<b>1758</b>	<b>233905</b>

\* Inactive CVX Codes 15 (FLU-TIVhx), 16 (FLU-WHOLE), 123 (FLU-H5N1), and 151 (FLU-NasNOS) should not be used to document flu vaccines given this flu season.

\*\* CVX Code 88 (FLU-NOS) should only be used to document flu vaccines given elsewhere when flu vaccine type is unknown.

+ CPT Flu codes include: 90654-90662, 90672-90673, 90685-90686, 90724, G0008, G8108.

^ ICD9 codes V04.8 and V06.6 are not displayed on this report and are not used in any of the influenza vaccine coverage calculations.

- This report includes data from the following # of RPMS databases:

<b>IHS Area</b>	<b># of RPMS Databases Reporting*</b>	<b># of Facilities Reporting**</b>
NATIONAL	178	576
ALASKA	11	94
ALBUQUERQUE	13	34
BEMIDJI	4	17
BILLINGS	13	36
CALIFORNIA	26	56
GREAT PLAINS	16	33
NASHVILLE	17	26
NAVAJO	8	123
OKLAHOMA	21	59
PHOENIX	19	40
PORTLAND	28	41
TUCSON	2	17

\* Exporting databases may include data from multiple facilities.

\*\* Includes only facility categories: Hospital, Health Center, Health Station, Health Location, Alaska Village Clinic.