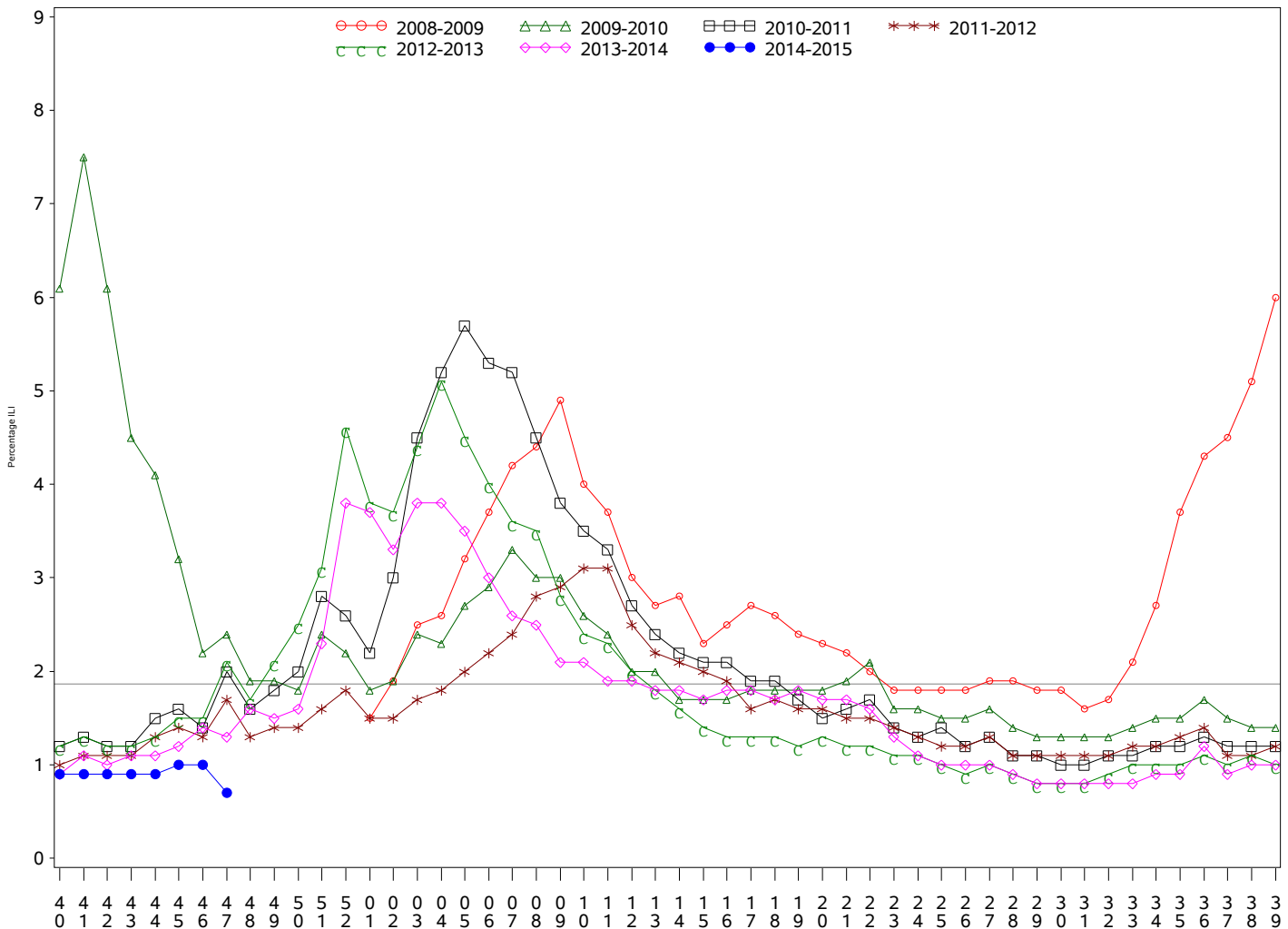




Indian Health Service
 Division of Epidemiology and Disease Prevention
Influenza Surveillance Report
IHS Influenza Awareness System (IIAS)
#8 (Week 47: 6/29/2014 – 11/22/2014)

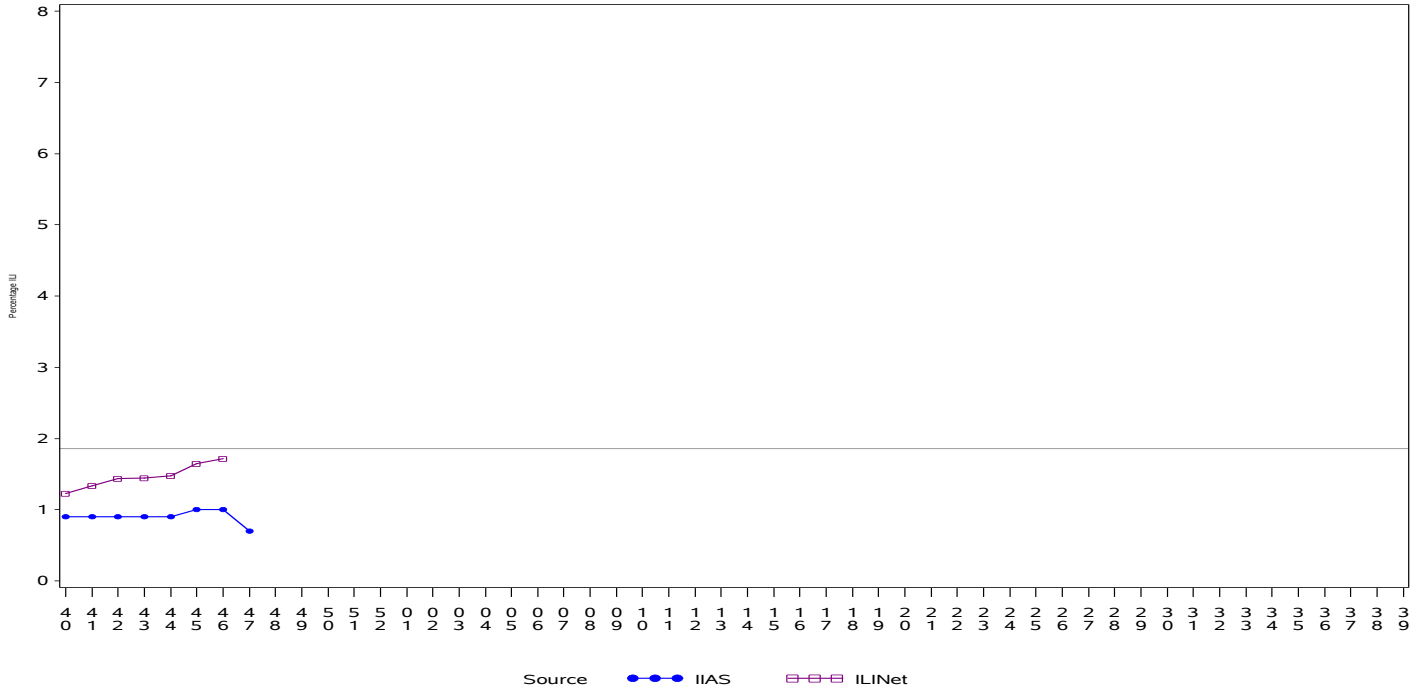
- Overall influenza-like-illness (ILI) activity in IHS and the U.S. is low.
- To date IHS has administered over 305,000 influenza vaccines this season.
- Overall, 25.5% of the IHS Active Clinical population received an influenza vaccine this season.

All IHS Areas
Influenza-Like Illness (ILI) for All Surveillance Years
Percentage of Visits for ILI per week
01/04/09 to 11/22/14



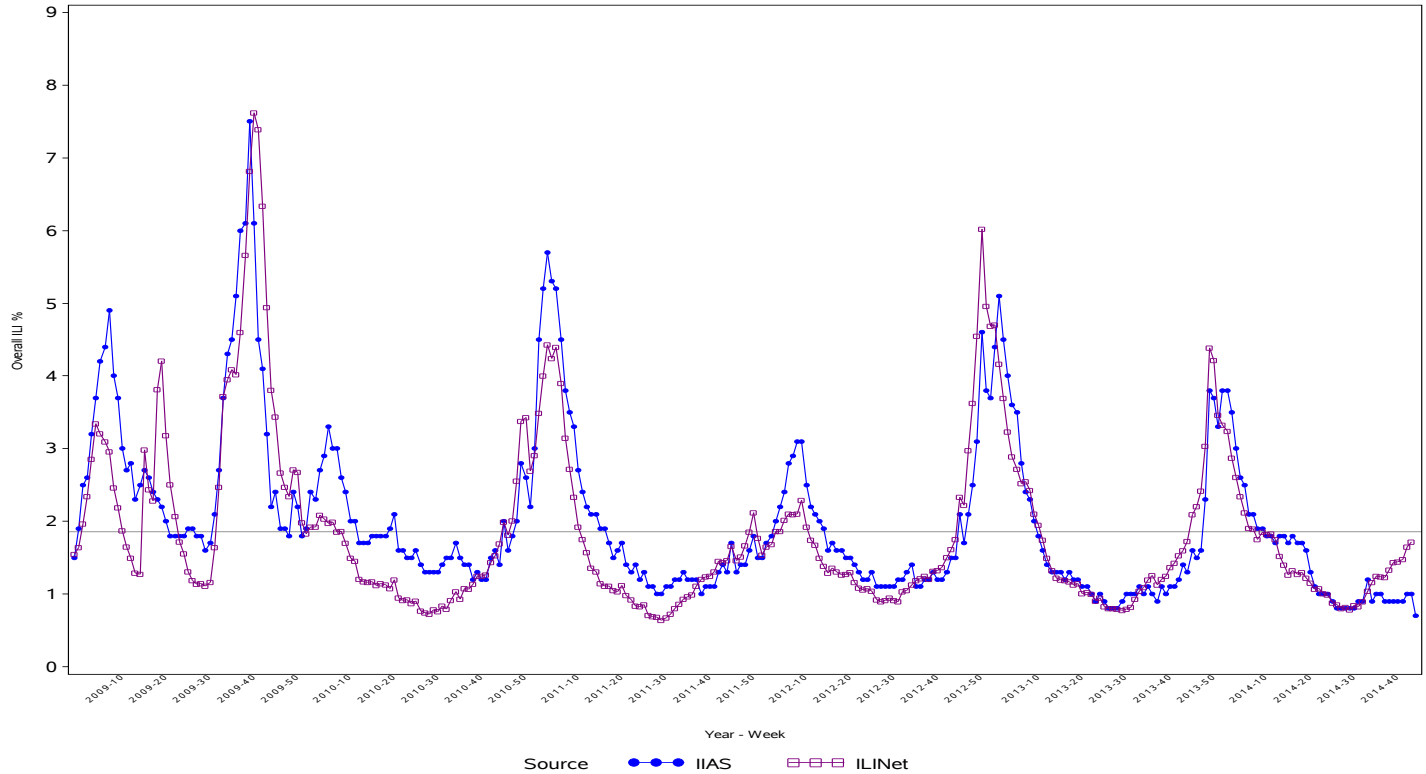
Percentage of ILI visits is number of ILI visits divided by total number of daily visits.
 The horizontal line represents the 2013-2014 baseline. The baseline is the mean percentage of patient visits for ILI during non-influenza weeks for the previous three seasons plus two standard deviations.

Proportion of Outpatient Visits for Influenza-Like Illness (ILI)
Percent ILI for FluYear 2014 - 2015
ILINet vs. IIAS
09/28/14 to 11/22/14



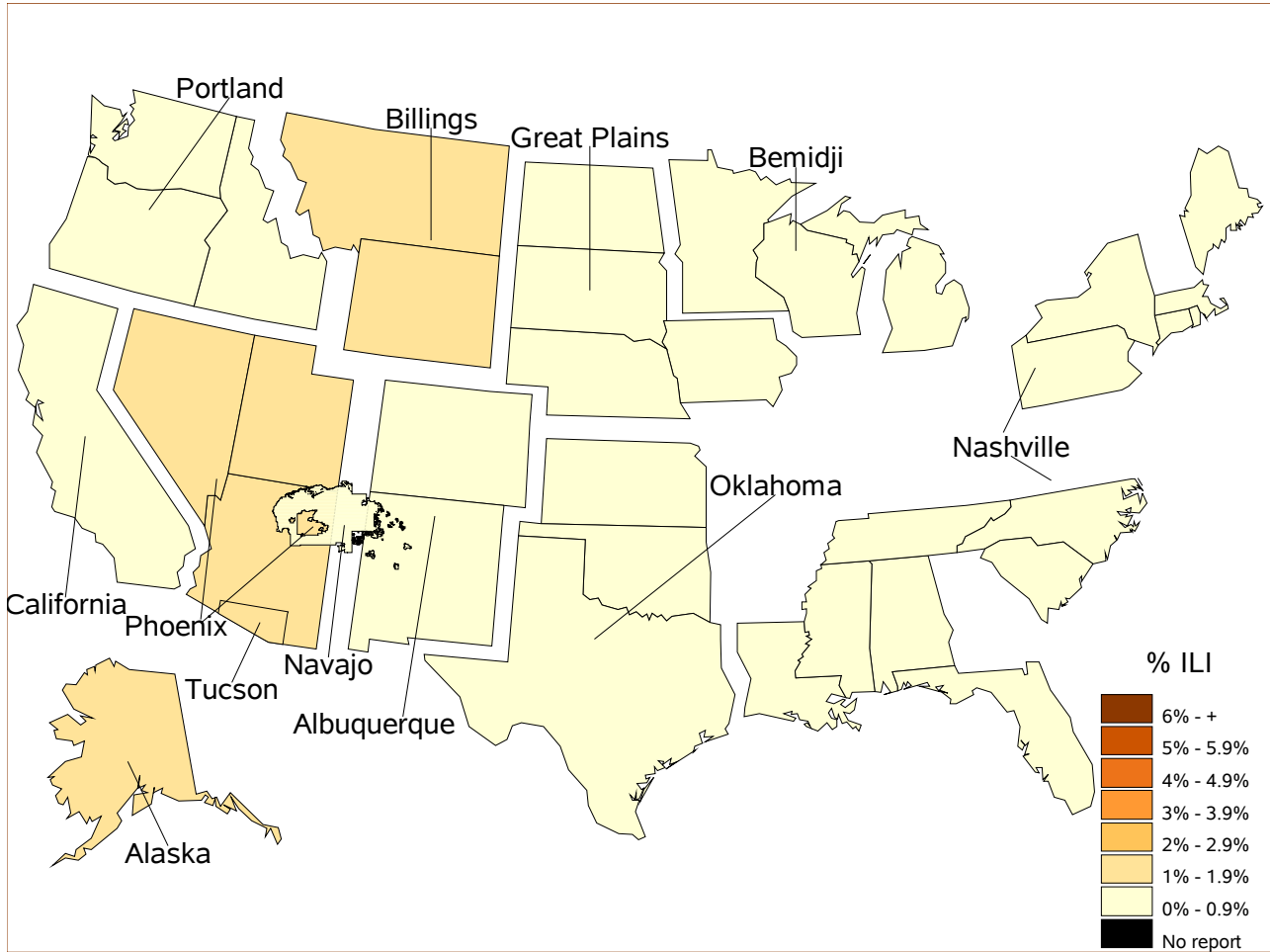
Percentage of ILI visits is number of ILI visits divided by total number of daily visits (outpatient visits).
 The horizontal line represents the 2013-2014 baseline. The baseline is the mean percentage of patient visits for ILI during non-influenza weeks for the previous three seasons plus two standard deviations.
 Sources: ILINet - CDC Sentinal Surveillance System for Influenza-Like Illness, IIAS - IHS Influenza Awareness System

IIAS versus ILINet
Influenza-Like Illness (ILI) All Surveillance Years - Continuous
Percentage of Visits for ILI per week
01/04/09 to 11/22/14



Percentage of ILI visits is number of ILI visits divided by total number of daily visits (outpatient visits).

**Percentage of Influenza-Like Illness Visits by Region
For Week: 47**



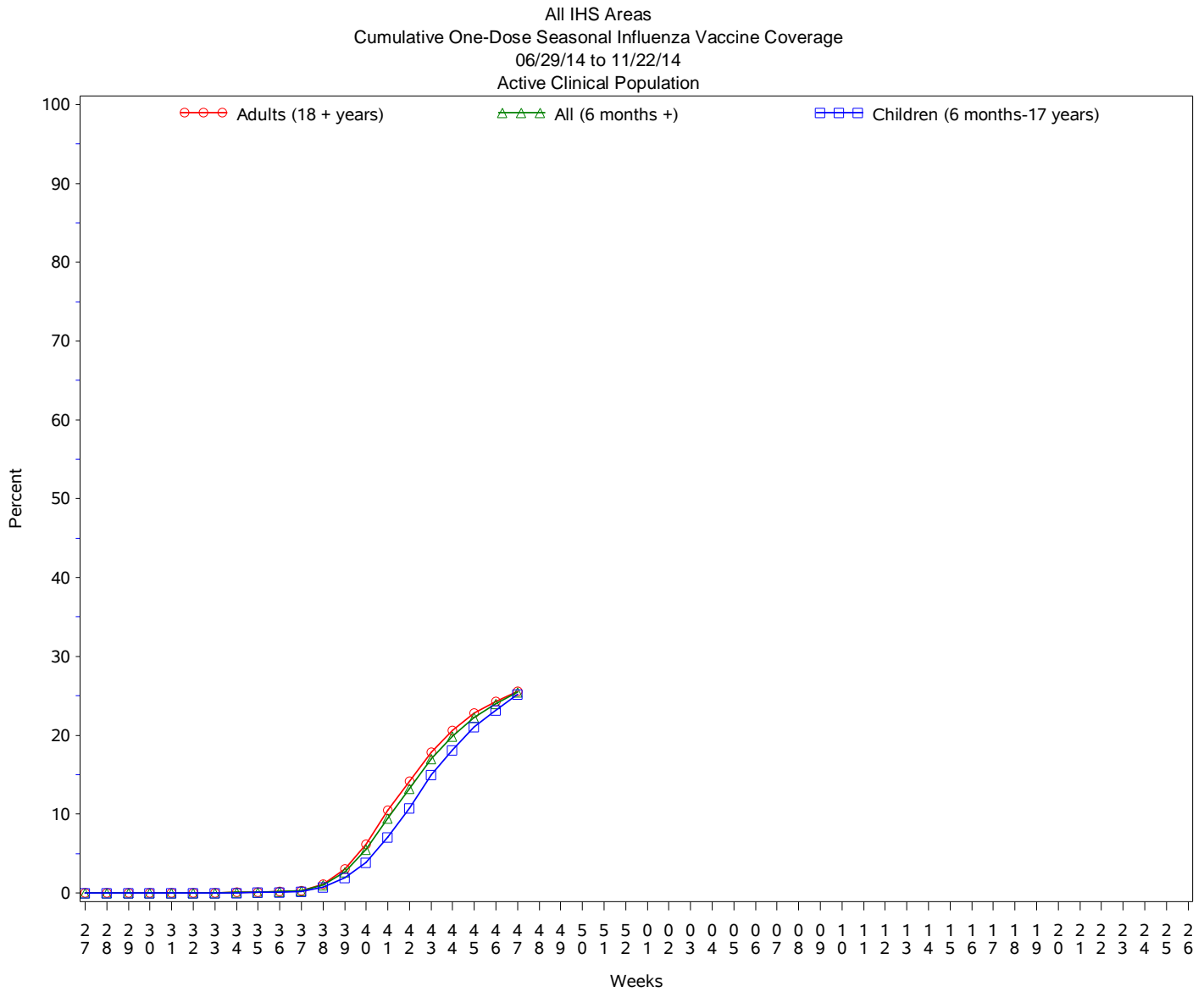
% Visits for ILI Compared to Previous Week

IHS Areas	% in Week 46	% in Week 47
NATIONAL	1.0	0.7
ALASKA	2.4	1.0
ALBUQUERQUE	0.7	0.5
BEMIDJI	1.2	0.9
BILLINGS	1.0	1.0
CALIFORNIA	0.6	0.5
GREAT PLAINS	0.9	0.9
NASHVILLE	1.1	0.7
NAVAJO	1.0	0.7
OKLAHOMA	0.6	0.5
PHOENIX	1.7	1.2
PORTLAND	0.6	0.5
TUCSON	2.3	1.4

Percentage of ILI visits is number of ILI visits divided by total number of daily visits.

IHS Influenza Vaccination* Surveillance

- As of 11/22/2014, sites reporting to the IIAS have administered 305,261 doses (1st and 2nd) of seasonal influenza vaccine to Active Clinical patients.



Influenza Vaccination Coverage by Age Group*

Age Group	Active Clinical Population**	Seasonal Flu Vaccine (At Least 1 Dose)***	% Seasonal Flu (At Least 1 Dose)	Seasonal Flu Vaccine (At Least 2 Doses)	% Seasonal Flu (At Least 2 Doses)	Total #Doses Administered****
0 - 5 months	5,449	63	1.2	4	0.1	67
6 - 23 months	27,173	9,071	33.4	707	2.6	9,795
2 - 4 years	65,776	14,364	21.8	158	0.2	14,564
5 - 17 years	244,903	61,674	25.2	426	0.2	62,293
18 - 49 years	519,299	101,140	19.5	752	0.1	102,276
50 - 64 years	207,450	68,203	32.9	536	0.3	69,019
65 + years	115,539	46,572	40.3	442	0.4	47,314
Children (6 months-17 years)	337,852	85,109	25.2	1,291	0.4	86,652
Adults (18 + years)	842,288	215,915	25.6	1,730	0.2	218,609
All (6 months +)	1,180,140	301,024	25.5	3,021	0.3	305,261

* Limited to sites that exported both doses administered and active clinical population data.

** Active Clinical is defined as patients who have had at least 2 visits in the last 3 years.

*** Number of unique patients with at least 1 dose.

**** Total # Doses Administered = All doses administered to patients including doses not included in coverage calculation due to lack of Active Clinical Population data.

Influenza Vaccination Doses Administered by Influenza Vaccination Type*

Area	Inactive CVX Codes*	CVX 88 FLU-NOS**	CVX 111 FLU-LAIV3	CVX 135 FLU-HIGH	CVX 140 FLU-IIV3pf	CVX 141 FLU-IIV3	CVX 144 FLU-Dermal	CVX 149 FLU-LAIV4	CVX 150 FLU-IIV4pf	CVX 153 FLU-ccIIV3	CVX 155 FLU-RIV3	CVX 158 IIV4	CVX 161 IIV4pf-ped	Proc 99.52 Vac Inf	ICD-9 V04.81 Vac Inf	CPT Billing Codes+	Cumulative # of Doses Seasonal Flu
AKA	31	28	2	288	25	2530	.	510	998	93	3	3381	.	.	120	68	8077
ALB	97	150	8	920	248	11327	152	2075	4326	.	.	1881	15	.	106	163	21468
BEM	85	206	40	283	358	6344	13	959	1310	1	1	391	.	.	502	75	10568
BIL	91	86	6	835	179	3795	1	1781	8235	1	.	574	.	.	77	110	15771
CAO	83	147	3	886	951	10612	447	1675	2637	1	1	999	.	.	259	224	18925
GPA	34	87	10	414	384	11698	44	2875	5980	3	1	3814	5	1	1068	52	26470
NSA	234	114	.	132	89	5336	349	618	2131	.	6	338	.	21	116	145	9629
NAV	67	225	14	336	1686	59994	.	3504	4802	1	.	4604	2	1	377	449	76062
OKC	119	1405	93	2897	179	41276	275	4242	17948	9	.	2825	.	132	726	101	72227
PHX	38	358	3	1254	196	13347	99	3467	15077	1	4	1613	1	5	353	459	36275
POR	153	372	51	680	966	8847	273	2138	4082	13	10	3501	78	.	345	271	21780
TUC	.	24	1	1	3	184	1	311	5421	.	.	892	.	1	131	18	6988
	1032	3202	231	8926	5264	175290	1654	24155	72947	123	26	24813	101	161	4180	2135	324240

* Inactive CVX Codes 15 (FLU-TIVhx), 16 (FLU-WHOLE), 123 (FLU-H5N1), and 151 (FLU-NasNOS) should not be used to document flu vaccines given this flu season.

** CVX Code 88 (FLU-NOS) should only be used to document flu vaccines given elsewhere when flu vaccine type is unknown.

+ CPT Flu codes include: 90654-90662, 90672-90673, 90685-90686, 90724, G0008, G8108.

^ ICD9 codes V04.8 and V06.6 are not displayed on this report and are not used in any of the influenza vaccine coverage calculations.

- This report includes data from the following # of RPMS databases:

IHS Area	# of RPMS Databases Reporting*	# of Facilities Reporting**
NATIONAL	182	570
ALASKA	10	64
ALBUQUERQUE	13	33
BEMIDJI	5	19
BILLINGS	13	37
CALIFORNIA	27	57
GREAT PLAINS	17	34
NASHVILLE	20	30
NAVAJO	8	135
OKLAHOMA	21	63
PHOENIX	19	40
PORTLAND	27	40
TUCSON	2	18

* Exporting databases may include data from multiple facilities.

** Includes only facility categories: Hospital, Health Center, Health Station, Health Location, Alaska Village Clinic.