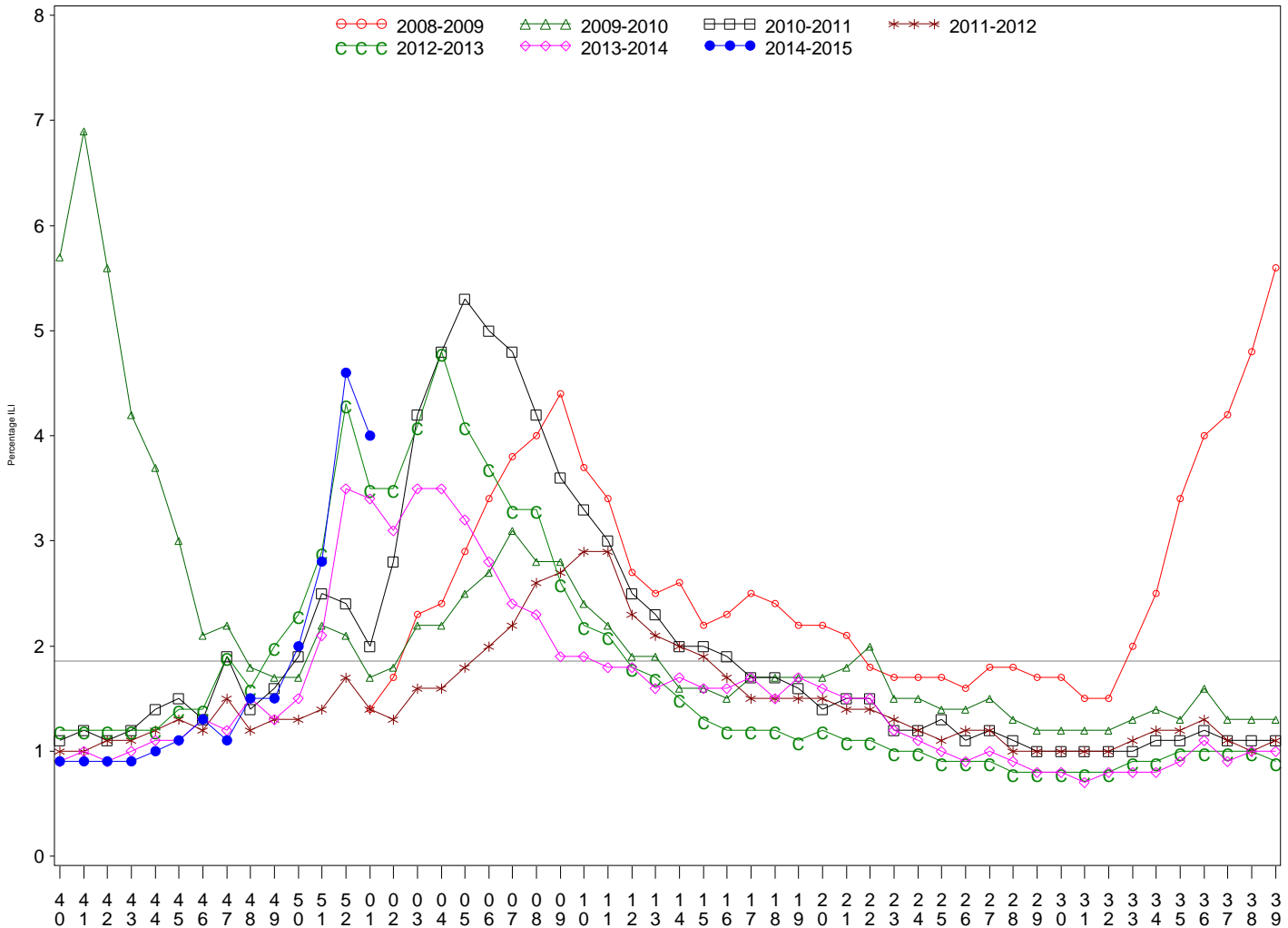




Indian Health Service
 Division of Epidemiology and Disease Prevention
Influenza Surveillance Report
IHS Influenza Awareness System (IIAS)
#14 (Week 1: 6/29/2014 – 1/3/2015)

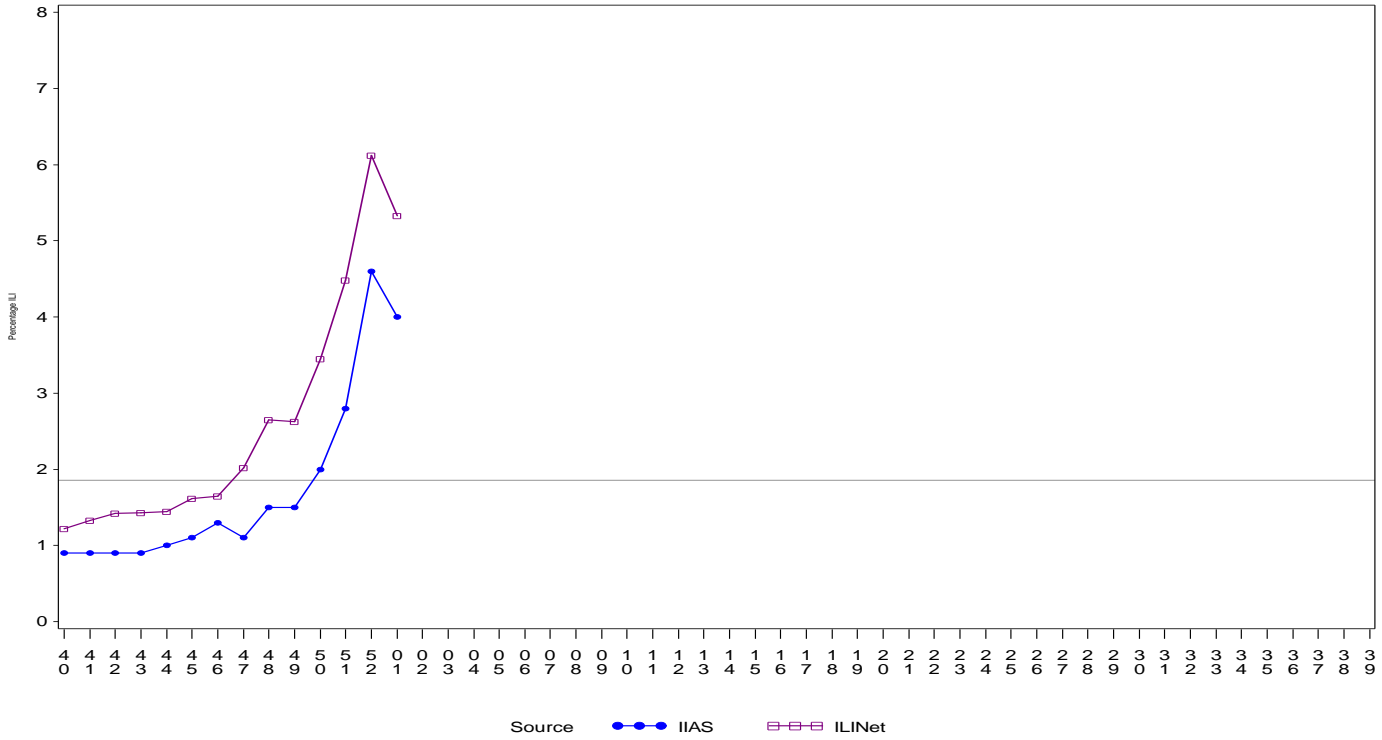
- Influenza-like-illness (ILI) activity in IHS and the U.S. is high.
- To date IHS has administered over 388,000 influenza vaccines this season.
- Overall, 32.1% of the IHS Active Clinical population received an influenza vaccine this season.

All IHS Areas
 Influenza-Like Illness (ILI) for All Surveillance Years
 Percentage of Visits for ILI per week
 01/04/09 to 1/3/15



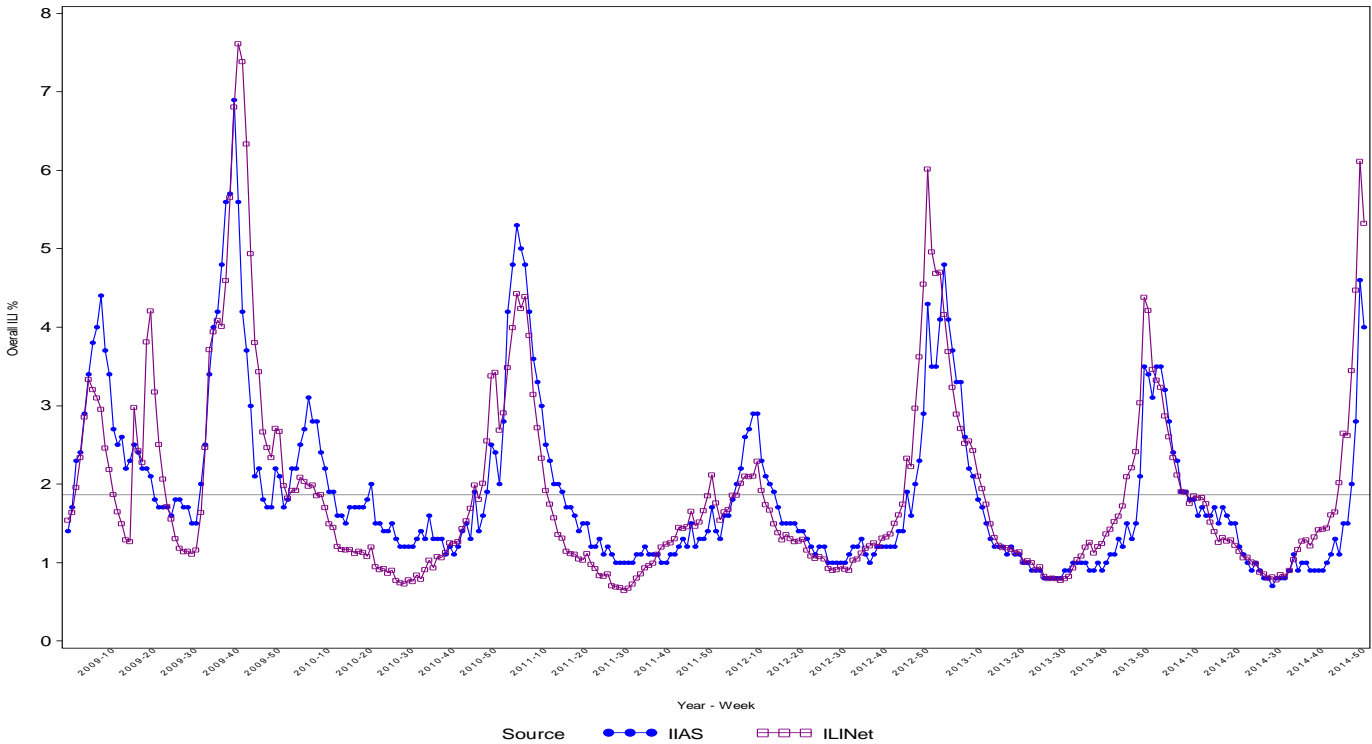
Percentage of ILI visits is number of ILI visits divided by total number of daily visits.
 The horizontal line represents the 2013-2014 baseline. The baseline is the mean percentage of patient visits for ILI during non-influenza weeks for the previous three seasons plus two standard deviations.

Proportion of Outpatient Visits for Influenza-Like Illness (ILI)
 Percent ILI for FluYear 2014 - 2015
 ILINet vs. IIAS
 09/28/14 to 1/3/15



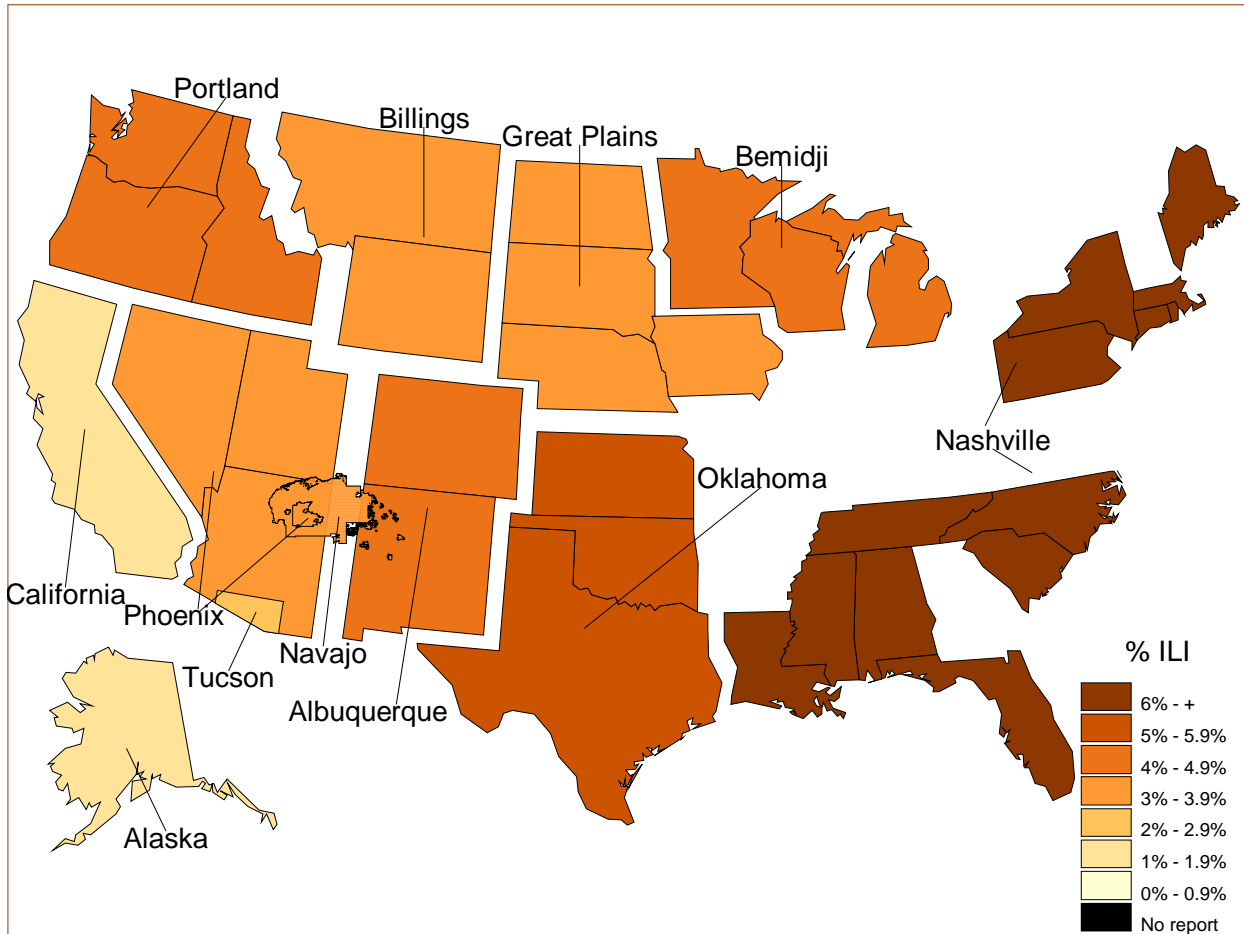
Percentage of ILI visits is number of ILI visits divided by total number of daily visits (outpatient visits).
 The horizontal line represents the 2013-2014 baseline. The baseline is the mean percentage of patient visits for ILI during non-influenza weeks for the previous three seasons plus two standard deviations.
 Sources: ILINet - CDC Sentinal Surveillance System for Influenza-Like Illness, IIAS - IHS Influenza Awareness System

IIAS versus ILINet
 Influenza-Like Illness (ILI) All Surveillance Years - Continuous
 Percentage of Visits for ILI per week
 01/04/09 to 1/3/15



Percentage of ILI visits is number of ILI visits divided by total number of daily visits (outpatient visits).

Percentage of Influenza-Like Illness Visits by IHS Area
For Week: 1



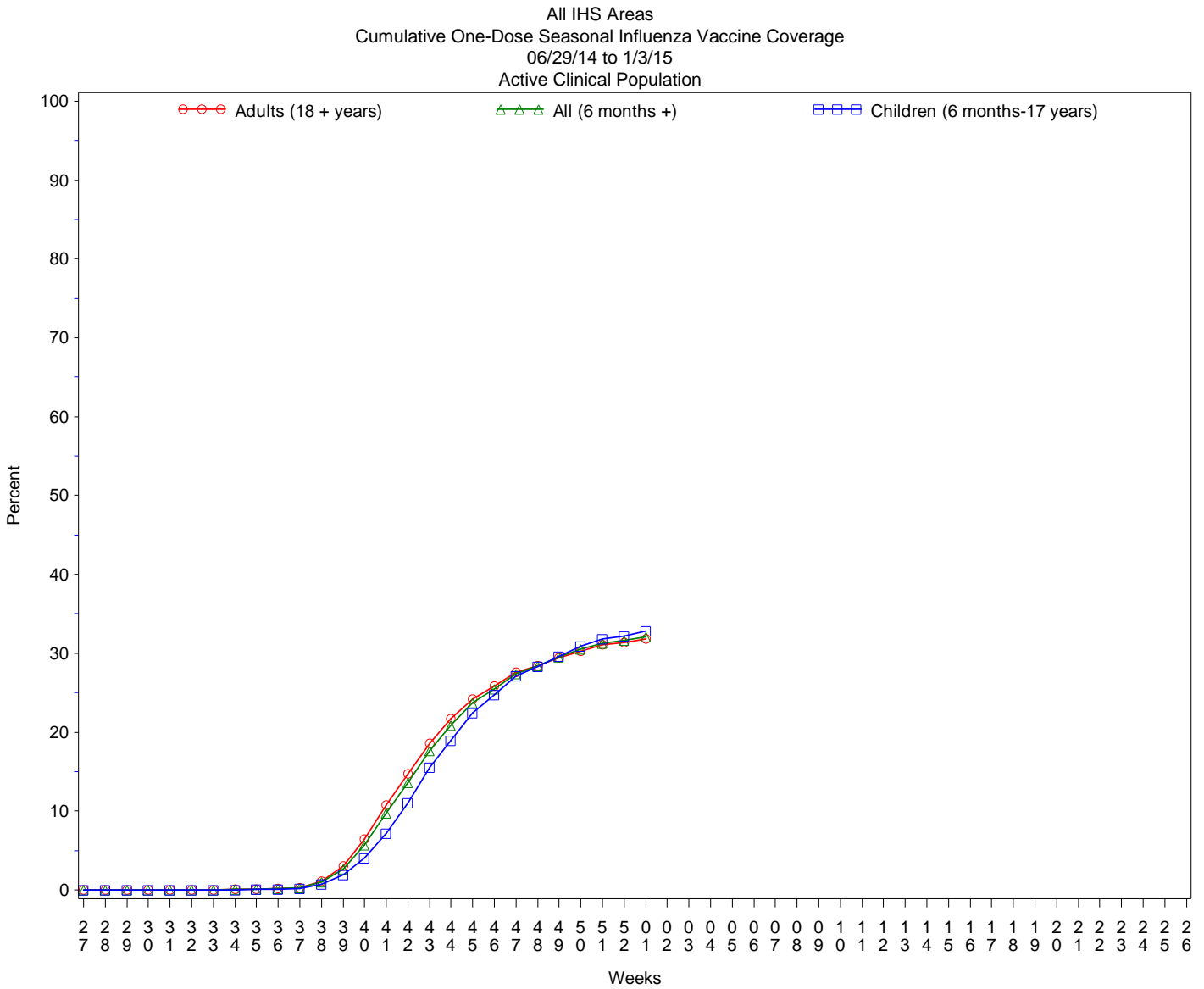
% Visits for ILI Compared to Previous Week

IHS Areas	% in Week 52	% in Week 1
NATIONAL	4.6	4.0
ALASKA	2.4	1.3
ALBUQUERQUE	2.8	4.4
BEMIDJI	7.5	4.9
BILLINGS	4.1	3.7
CALIFORNIA	1.6	1.2
GREAT PLAINS	3.9	3.2
NASHVILLE	10.8	6.0
NAVAJO	3.2	3.3
OKLAHOMA	6.9	5.6
PHOENIX	4.2	3.7
PORTLAND	2.5	4.2
TUCSON	1.7	2.0

Percentage of ILI visits is number of ILI visits divided by total number of daily visits.

IHS Influenza Vaccination Surveillance

- As of 1/3/2015, sites reporting to the IIAS have administered 388,900 doses (1st and 2nd) of seasonal influenza vaccine to Active Clinical patients.



Influenza Vaccination Coverage by Age Group*

Age Group	Active Clinical Population**	Seasonal Flu Vaccine (At Least 1 Dose)***	% Seasonal Flu (At Least 1 Dose)	Seasonal Flu Vaccine (At Least 2 Doses)	% Seasonal Flu (At Least 2 Doses)	Total #Doses Administered****
0 - 5 months	5,443	102	1.9	4	0.1	106
6 - 23 months	27,004	13,268	49.1	2,375	8.8	15,680
2 - 4 years	65,808	19,190	29.2	347	0.5	19,609
5 - 17 years	246,478	78,963	32.0	721	0.3	79,979
18 - 49 years	521,771	128,452	24.6	1,391	0.3	130,346
50 - 64 years	209,657	84,401	40.3	917	0.4	85,696
65 + years	116,979	56,539	48.3	698	0.6	57,590
Children (6 months-17 years)	339,290	111,421	32.8	3,443	1.0	115,268
Adults (18 + years)	848,407	269,392	31.8	3,006	0.4	273,632
All (6 months +)	1,187,697	380,813	32.1	6,449	0.5	388,900

* Limited to sites that exported both doses administered and active clinical population data.

** Active Clinical is defined as patients who have had at least 2 visits in the last 3 years.

*** Number of unique patients with at least 1 dose.

**** Total # Doses Administered = All doses administered to patients including doses not included in coverage calculation due to lack of Active Clinical Population data.

Influenza Vaccination Doses Administered by Influenza Vaccination Type*

Area	Inactive CVX Codes*	CVX 88 FLU-NOS**	CVX 111 FLU-LAIV3	CVX 135 FLU-HIGH	CVX 140 FLU-IIV3pf	CVX 141 FLU-IIV3	CVX 144 FLU-Dermal	CVX 149 FLU-LAIV4	CVX 150 FLU-IIV4pf	CVX 153 FLU-cclIIV3	CVX 155 FLU-RIV3	CVX 158 IIV4	CVX 161 IIV4pf-ped	Proc 99.52 Vac Inf	ICD-9 V04.81 Vac Inf	CPT Billing Codes+	Cumulative # of Doses Seasonal Flu
AKA	54	140	8	343	33	4129	.	846	2408	113	2	4160	.	1	179	142	12558
ALB	125	318	15	1064	409	14628	238	2653	5557	1	1	2401	52	.	122	198	27782
BEM	154	291	61	369	649	8135	32	1301	1941	3	1	568	9	.	501	91	14106
BIL	110	180	7	934	255	4961	1	2178	10197	1	.	895	.	1	101	139	19960
CAO	127	245	5	1006	1364	13282	516	2167	3502	1	2	1320	26	.	348	424	24335
GPA	46	205	14	476	440	15124	45	3354	7412	3	3	4846	19	1	1217	61	33266
NSA	302	162	1	158	224	6404	409	688	3300	.	6	400	1	26	175	228	12484
NAV	174	418	25	427	4302	69552	.	4363	6883	2	1	5963	154	3	504	636	93407
OKC	188	3088	111	3332	237	54201	357	5430	22288	14	4	3767	3	253	1008	196	94477
PHX	83	569	8	1520	293	17559	103	4504	19308	1	4	2072	27	7	446	544	47048
POR	195	693	102	774	1259	11374	308	2599	5077	17	13	4226	119	.	328	311	27395
TUC	.	37	2	12	16	625	1	375	6676	.	.	1010	.	1	320	22	9097
	1558	6346	359	10415	9481	219974	2010	30458	94549	156	37	31628	410	293	5249	2992	415915

* Inactive CVX Codes 15 (FLU-TIVhx), 16 (FLU-WHOLE), 123 (FLU-H5N1), and 151 (FLU-NasNOS) should not be used to document flu vaccines given this flu season.

** CVX Code 88 (FLU-NOS) should only be used to document flu vaccines given elsewhere when flu vaccine type is unknown.

+ CPT Flu codes include: 90654-90662, 90672-90673, 90685-90686, 90724, G0008, G8108.

^ ICD9 codes V04.8 and V06.6 are not displayed on this report and are not used in any of the influenza vaccine coverage calculations.

- This report includes data from the following number of Resource and Patient Management System (RPMS) databases:

IHS Area	# of RPMS Databases Reporting*	# of Facilities Reporting**
NATIONAL	192	397
ALASKA	10	64
ALBUQUERQUE	15	25
BEMIDJI	14	23
BILLINGS	13	28
CALIFORNIA	27	50
GREAT PLAINS	17	29
NASHVILLE	20	28
NAVAJO	8	22
OKLAHOMA	21	49
PHOENIX	19	35
PORTLAND	26	35
TUCSON	2	9

* Exporting databases may include data from multiple facilities.

** Includes only facility categories: Hospital, Health Center, Health Station, Health Location, Alaska Village Clinic.