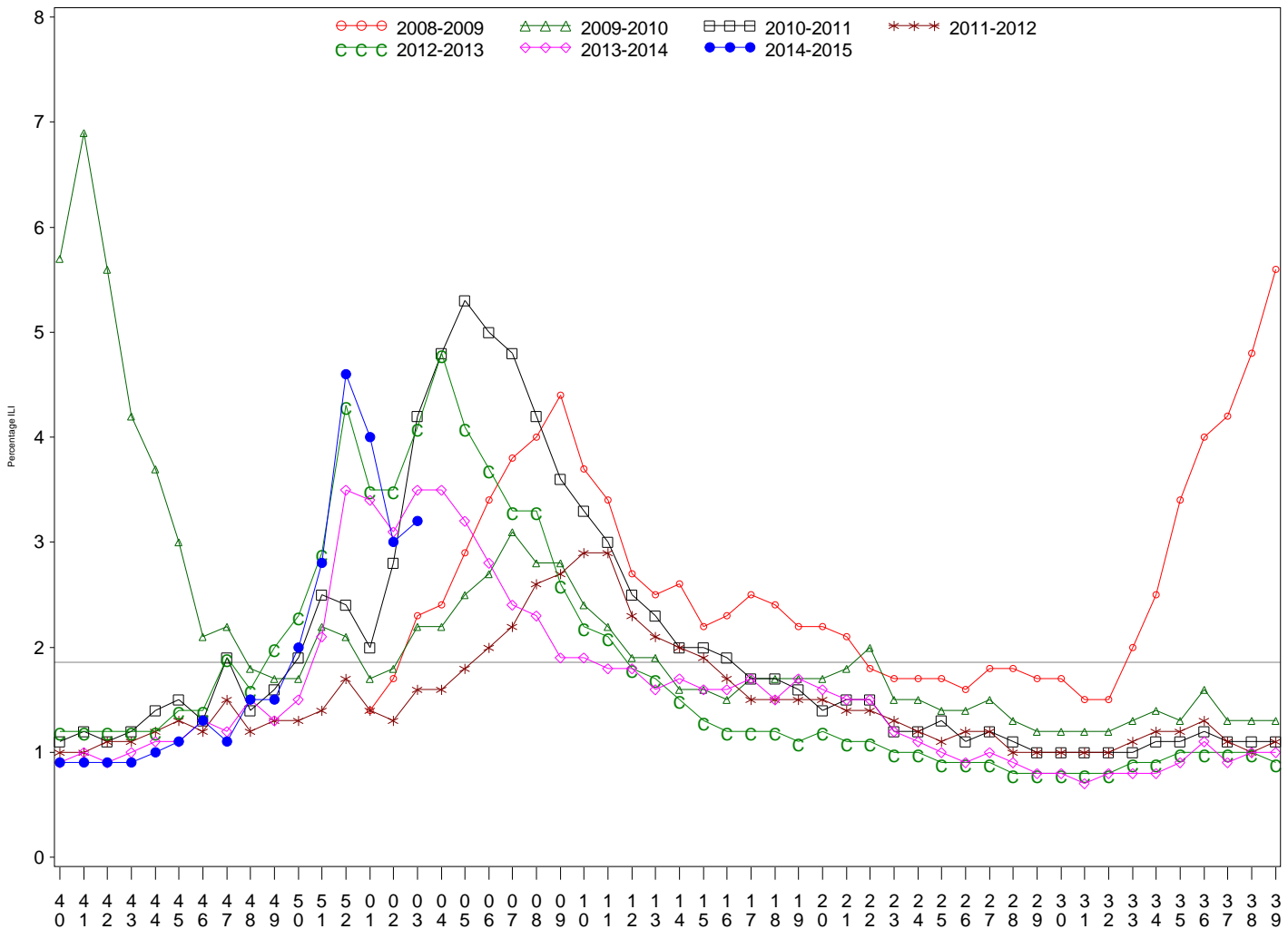




Indian Health Service
 Division of Epidemiology and Disease Prevention
Influenza Surveillance Report
IHS Influenza Awareness System (IIAS)
#16 (Week 3: 6/29/2014 – 1/17/2015)

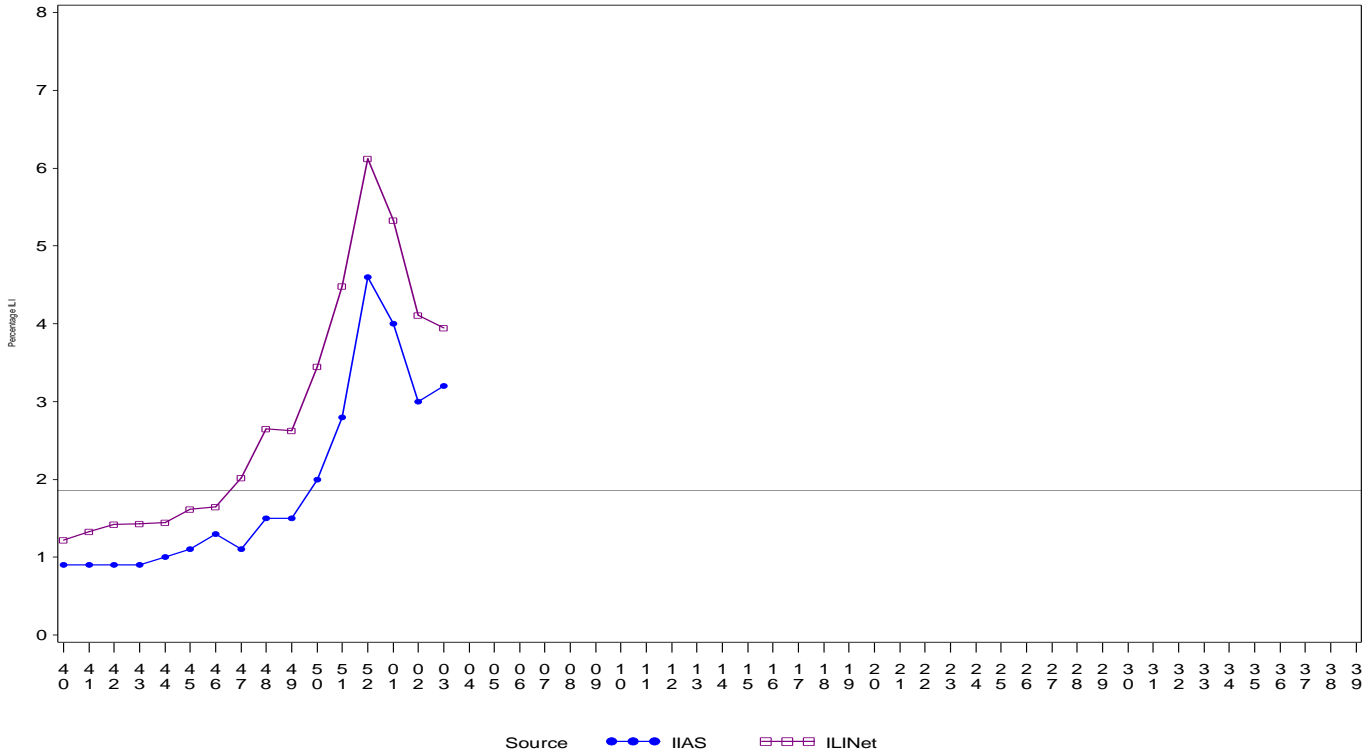
- Influenza-like-illness (ILI) activity in IHS and the U.S. is high.
- To date IHS has administered over 405,000 influenza vaccines this season.
- Overall, 33.3% of the IHS Active Clinical population received an influenza vaccine this season.

All IHS Areas
 Influenza-Like Illness (ILI) for All Surveillance Years
 Percentage of Visits for ILI per week
 01/04/09 to 1/17/15



Percentage of ILI visits is number of ILI visits divided by total number of daily visits. The horizontal line represents the 2013-2014 baseline. The baseline is the mean percentage of patient visits for ILI during non-influenza weeks for the previous three seasons plus two standard deviations.

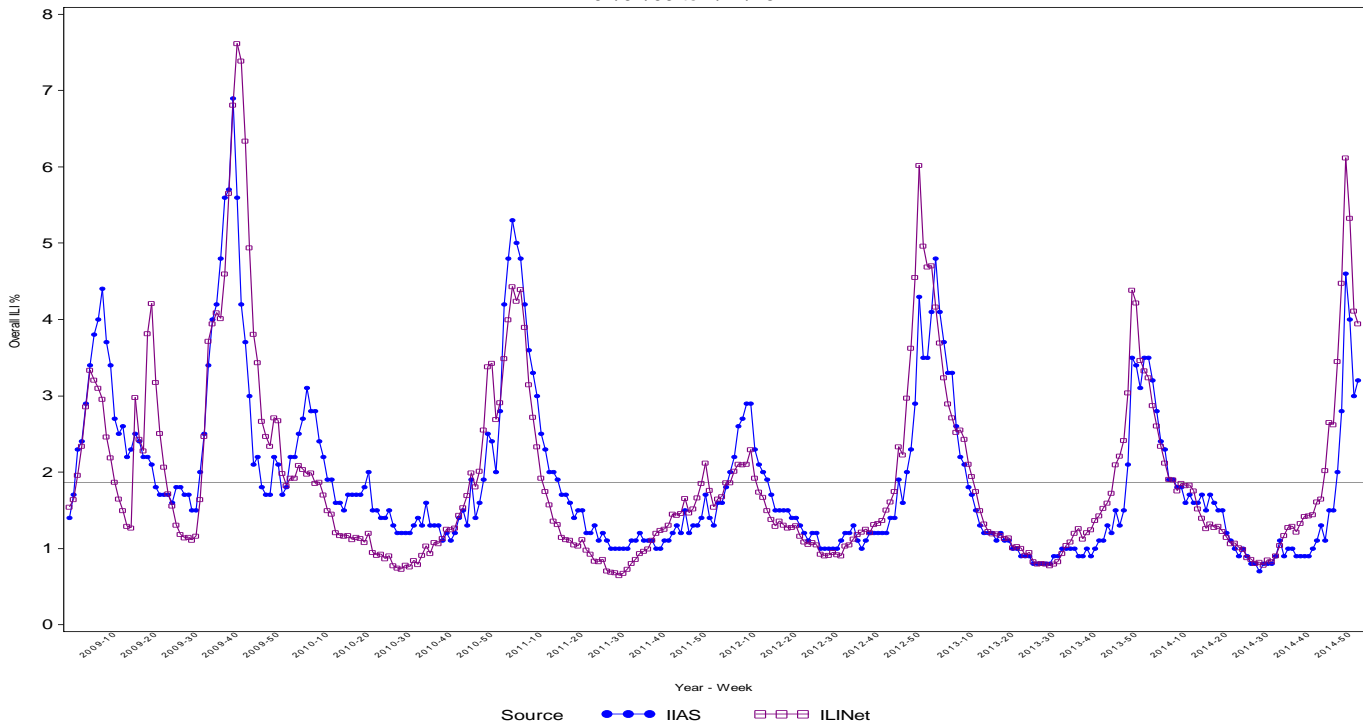
Proportion of Outpatient Visits for Influenza-Like Illness (ILI)
 Percent ILI for FluYear 2014 - 2015
 ILINet vs. IIAS
 09/28/14 to 1/17/15



Source: ●●● IIAS □□□ ILINet

Percentage of ILI visits is number of ILI visits divided by total number of daily visits (outpatient visits).
 The horizontal line represents the 2013-2014 baseline. The baseline is the mean percentage of patient visits for ILI during non-influenza weeks for the previous three seasons plus two standard deviations.
 Sources: ILINet - CDC Sentinal Surveillance System for Influenza-Like Illness, IIAS - IHS Influenza Awareness System

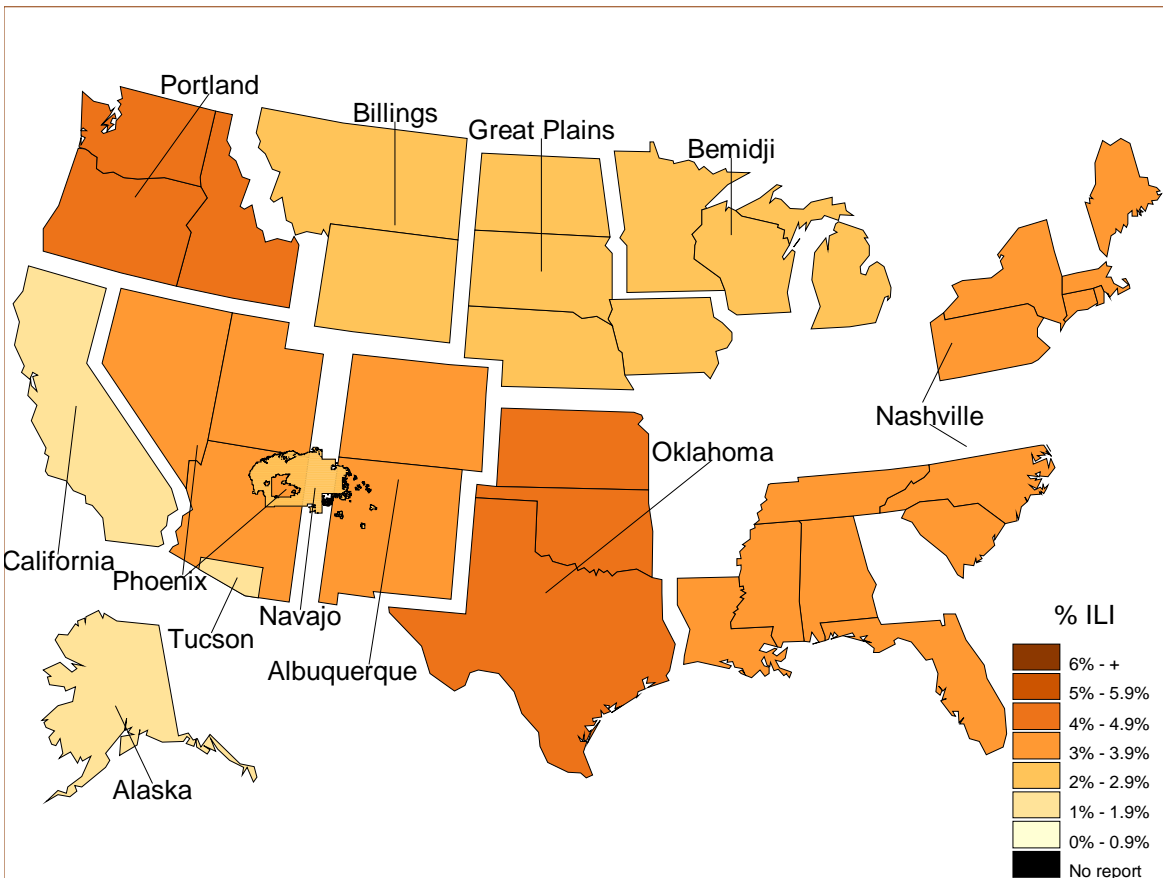
IIAS versus ILINet
 Influenza-Like Illness (ILI) All Surveillance Years - Continuous
 Percentage of Visits for ILI per week
 01/04/09 to 1/17/15



Source: ●●● IIAS □□□ ILINet

Percentage of ILI visits is number of ILI visits divided by total number of daily visits (outpatient visits).

Percentage of Influenza-Like Illness Visits by IHS Area
For Week: 3



% Visits for ILI Compared to Previous Week

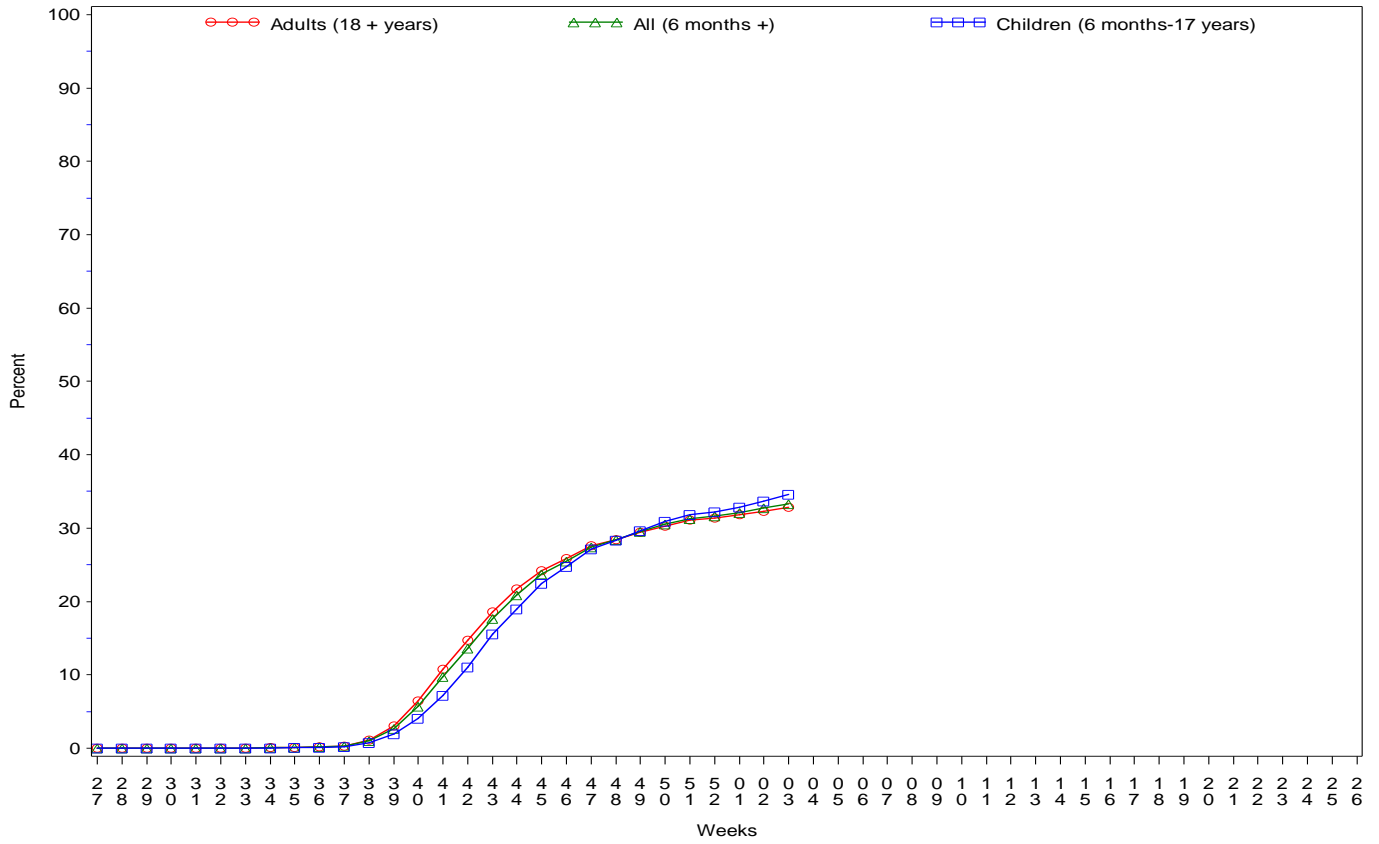
IHS Areas	% in Week 2	% in Week 3
NATIONAL	3.0	3.2
ALASKA	1.2	1.0
ALBUQUERQUE	3.2	3.0
BEMIDJI	3.8	2.4
BILLINGS	3.0	2.4
CALIFORNIA	1.6	1.9
GREAT PLAINS	3.1	2.8
NASHVILLE	3.2	3.0
NAVAJO	2.9	2.8
OKLAHOMA	3.4	4.0
PHOENIX	3.2	3.6
PORTLAND	3.1	4.9
TUCSON	1.8	1.9

Percentage of ILI visits is number of ILI visits divided by total number of daily visits.

IHS Influenza Vaccination Surveillance

- As of 1/17/2015, sites reporting to the IIAS have administered 405,097 doses (1st and 2nd) of seasonal influenza vaccine to Active Clinical patients.

All IHS Areas
Cumulative One-Dose Seasonal Influenza Vaccine Coverage
06/29/14 to 1/17/15
Active Clinical Population



Influenza Vaccination Coverage by Age Group*

Age Group	Active Clinical Population**	Seasonal Flu Vaccine (At Least 1 Dose)***	% Seasonal Flu (At Least 1 Dose)	Seasonal Flu Vaccine (At Least 2 Doses)	% Seasonal Flu (At Least 2 Doses)	Total #Doses Administered****
0 - 5 months	5,443	109	2.0	4	0.1	113
6 - 23 months	27,004	14,369	53.2	3,071	11.4	17,482
2 - 4 years	65,808	20,526	31.2	420	0.6	21,020
5 - 17 years	246,478	82,558	33.5	785	0.3	83,659
18 - 49 years	521,771	133,665	25.6	1,462	0.3	135,647
50 - 64 years	209,657	87,011	41.5	966	0.5	88,365
65 + years	116,979	57,816	49.4	745	0.6	58,924
Children (6 months-17 years)	339,290	117,453	34.6	4,276	1.3	122,161
Adults (18 + years)	848,407	278,492	32.8	3,173	0.4	282,936
All (6 months +)	1,187,697	395,945	33.3	7,449	0.6	405,097

* Limited to sites that exported both doses administered and active clinical population data.

** Active Clinical is defined as patients who have had at least 2 visits in the last 3 years.

*** Number of unique patients with at least 1 dose.

**** Total # Doses Administered = All doses administered to patients including doses not included in coverage calculation due to lack of Active Clinical Population data.

Influenza Vaccination Doses Administered by Influenza Vaccination Type*

Area	Inactive CVX Codes*	CVX 88 FLU-NOS**	CVX 111 FLU-LAIV3	CVX 135 FLU-HIGH	CVX 140 FLU-IIV3pf	CVX 141 FLU-IIV3	CVX 144 FLU-Dermal	CVX 149 FLU-LAIV4	CVX 150 FLU-IIV4pf	CVX 153 FLU-cclIV3	CVX 155 FLU-RIV3	CVX 158 IIV4	CVX 161 IIV4pf-ped	Proc 99.52 Vac Inf	ICD-9 V04.81 Vac Inf	CPT Billing Codes+	Cumulative # of Doses Seasonal Flu
AKA	54	140	8	348	33	4245	.	846	2569	114	3	4356	.	1	183	143	13043
ALB	125	321	15	1106	457	15260	245	2653	5933	1	1	2574	55	.	130	209	29085
BEM	155	294	61	377	683	8272	34	1341	1995	3	1	591	9	.	502	95	14413
BIL	112	180	7	944	267	5132	1	2187	10852	1	.	1020	.	1	106	142	20952
CAO	131	250	5	1030	1524	13751	533	2251	3823	1	2	1429	42	.	370	437	25579
GPA	46	211	14	485	449	15856	45	3368	7896	3	3	5115	23	1	1227	62	34804
NSA	325	164	1	160	237	6589	426	689	3440	.	6	417	1	26	185	233	12899
NAV	177	433	25	443	4949	70984	.	4406	7465	2	1	6164	245	3	521	664	96482
OKC	193	3106	111	3395	253	55981	388	5470	23293	14	4	3969	3	272	1041	203	97696
PHX	92	584	9	1563	320	18237	106	4579	20305	2	4	2339	32	7	457	563	49199
POR	195	703	106	783	1297	12008	332	2736	5303	19	13	4486	132	.	352	327	28792
TUC	.	37	2	12	16	636	1	381	7159	.	.	1025	.	1	335	24	9629
	1605	6423	364	10646	10485	226951	2111	30907	100033	160	38	33485	542	312	5409	3102	432573

* Inactive CVX Codes 15 (FLU-TIVhx), 16 (FLU-WHOLE), 123 (FLU-H5N1), and 151 (FLU-NasNOS) should not be used to document flu vaccines given this flu season.

** CVX Code 88 (FLU-NOS) should only be used to document flu vaccines given elsewhere when flu vaccine type is unknown.

+ CPT Flu codes include: 90654-90662, 90672-90673, 90685-90686, 90724, G0008, G8108.

^ ICD9 codes V04.8 and V06.6 are not displayed on this report and are not used in any of the influenza vaccine coverage calculations.

- This report includes data from the following number of Resource and Patient Management System (RPMS) databases:

IHS Area	# of RPMS Databases Reporting*	# of Facilities Reporting**
NATIONAL	182	404
ALASKA	10	66
ALBUQUERQUE	15	27
BEMIDJI	5	12
BILLINGS	13	29
CALIFORNIA	27	49
GREAT PLAINS	17	33
NASHVILLE	19	28
NAVAJO	8	29
OKLAHOMA	21	48
PHOENIX	19	36
PORTLAND	26	35
TUCSON	2	12

* Exporting databases may include data from multiple facilities.

** Includes only facility categories: Hospital, Health Center, Health Station, Health Location, Alaska Village Clinic.