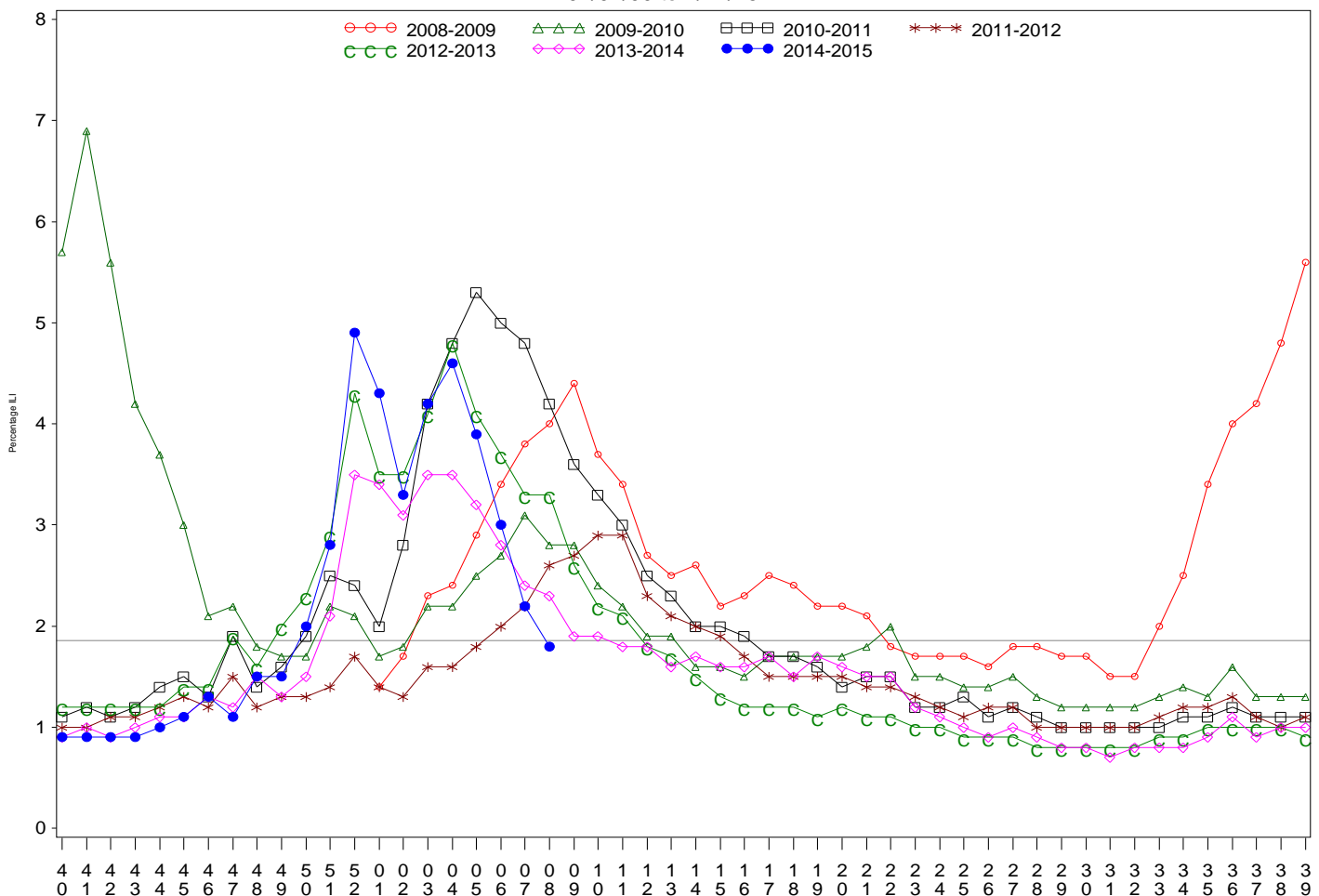




**Indian Health Service**  
 Division of Epidemiology and Disease Prevention  
**Influenza Surveillance Report**  
*IHS Influenza Awareness System (IIAS)*  
**#21 (Week 8: 6/29/2014 – 2/21/2015)**

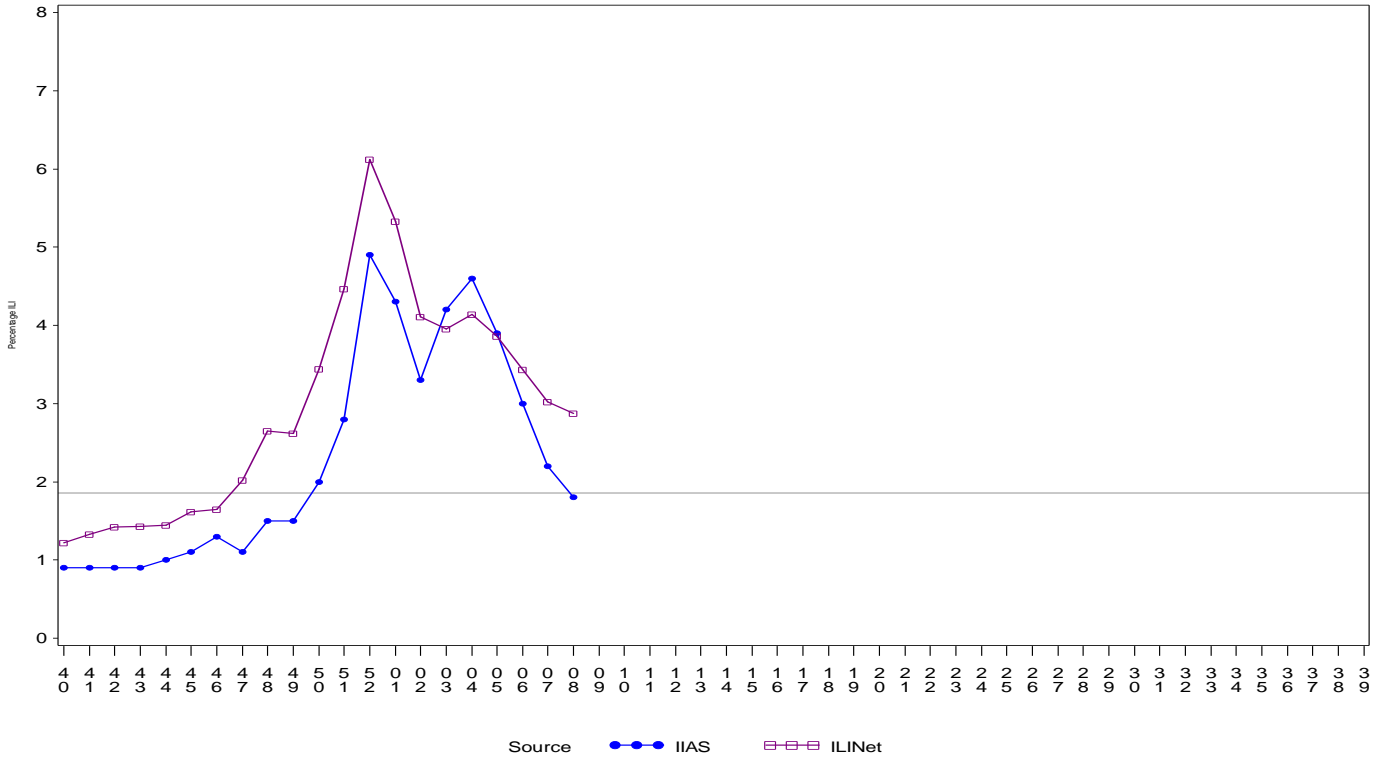
- Influenza-like-illness (ILI) activity in IHS and the U.S. is declining, though activity remains elevated in some regions.
- To date IHS has administered over 433,000 influenza vaccines this season.
- Overall, 35.5% of the IHS Active Clinical population received an influenza vaccine this season.

All IHS Areas  
 Influenza-Like Illness (ILI) for All Surveillance Years  
 Percentage of Visits for ILI per week  
 01/04/09 to 2/21/15



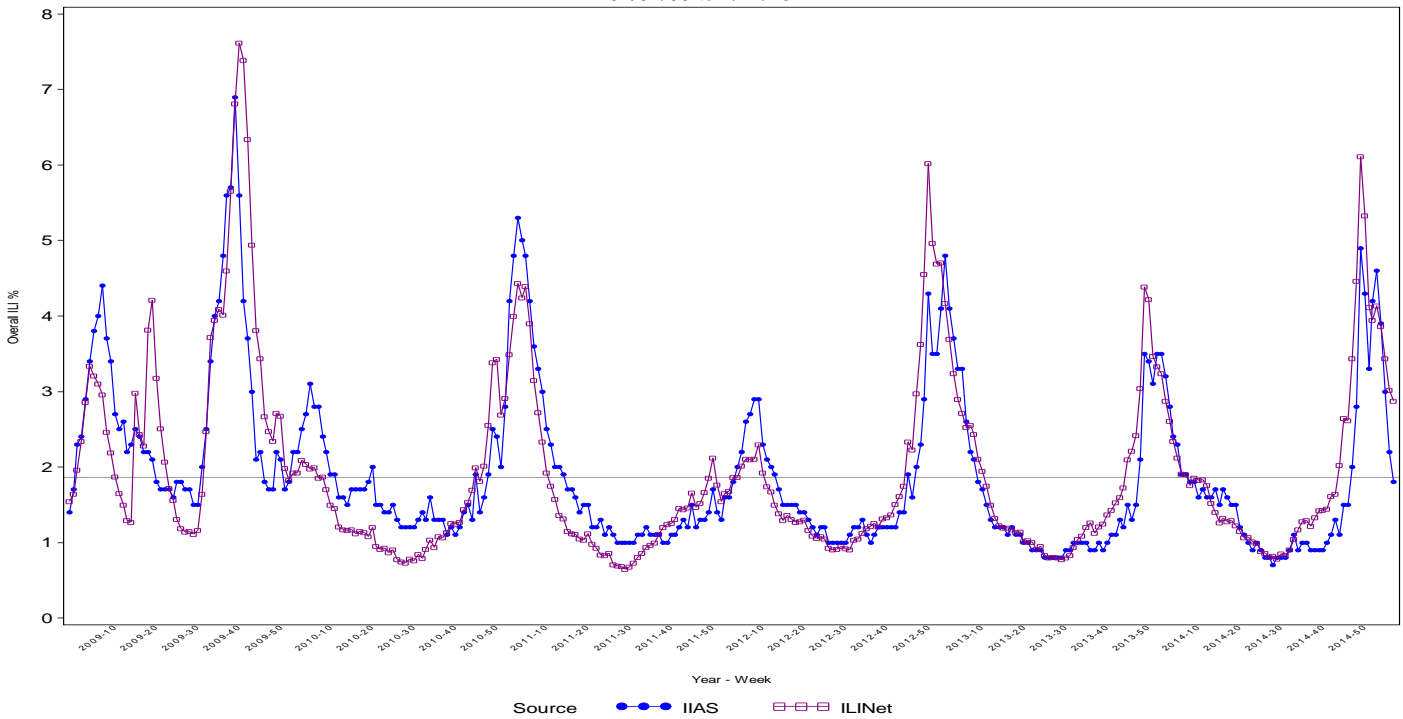
Percentage of ILI visits is number of ILI visits divided by total number of daily visits.  
 The horizontal line represents the 2013-2014 baseline. The baseline is the mean percentage of patient visits for ILI during non-influenza weeks for the previous three seasons plus two standard deviations.

Proportion of Outpatient Visits for Influenza-Like Illness (ILI)  
 Percent ILI for FluYear 2014 - 2015  
 ILINet vs. IAS  
 09/28/14 to 2/21/15



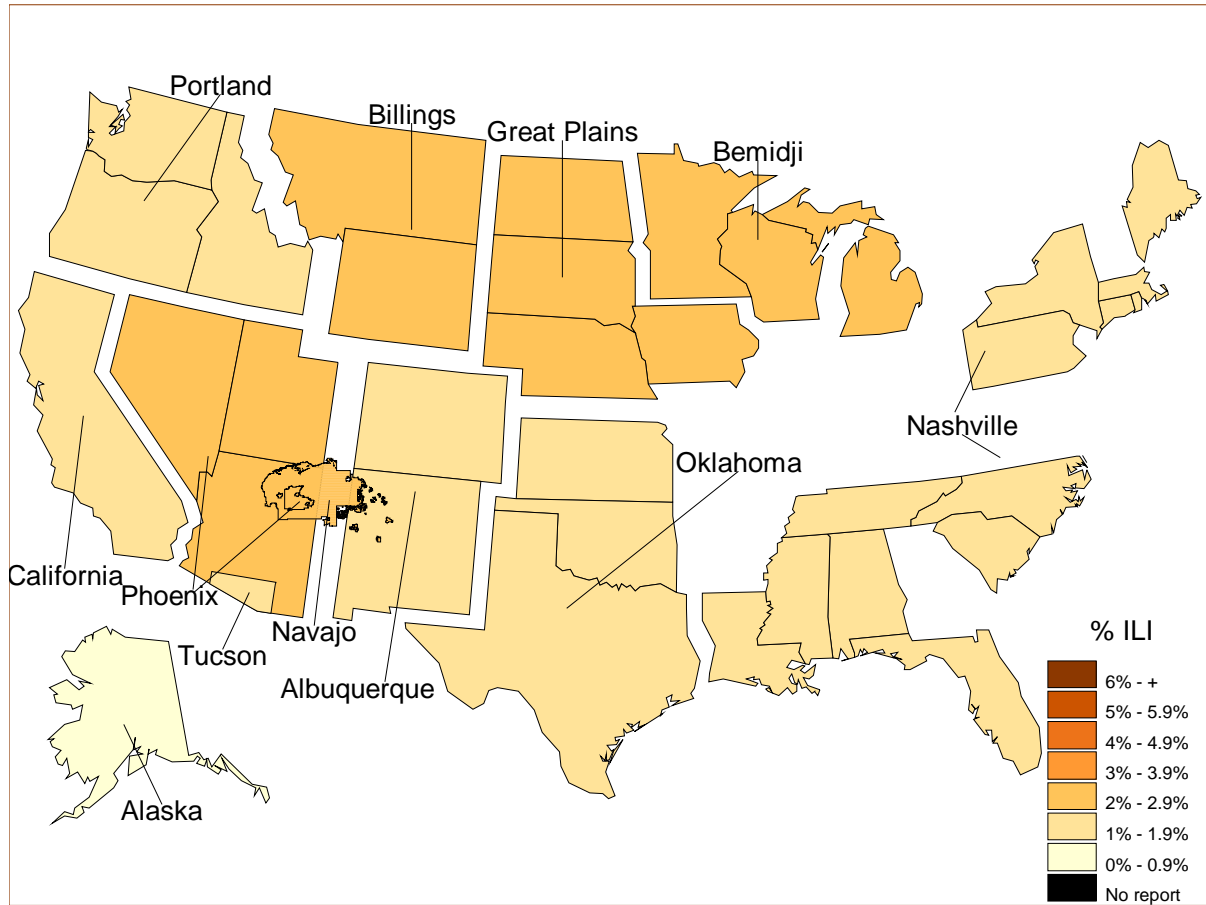
Percentage of ILI visits is number of ILI visits divided by total number of daily visits (outpatient visits).  
 The horizontal line represents the 2013-2014 baseline. The baseline is the mean percentage of patient visits for ILI during non-influenza weeks for the previous three seasons plus two standard deviations.  
 Sources: ILINet - CDC Sentinal Surveillance System for Influenza-Like Illness, IAS - IHS Influenza Awareness System

IIAS versus ILINet  
 Influenza-Like Illness (ILI) All Surveillance Years - Continuous  
 Percentage of Visits for ILI per week  
 01/04/09 to 2/21/15



Percentage of ILI visits is number of ILI visits divided by total number of daily visits (outpatient visits).

Percentage of Influenza-Like Illness Visits by IHS Area  
For Week: 8



% Visits for ILI Compared to Previous Week

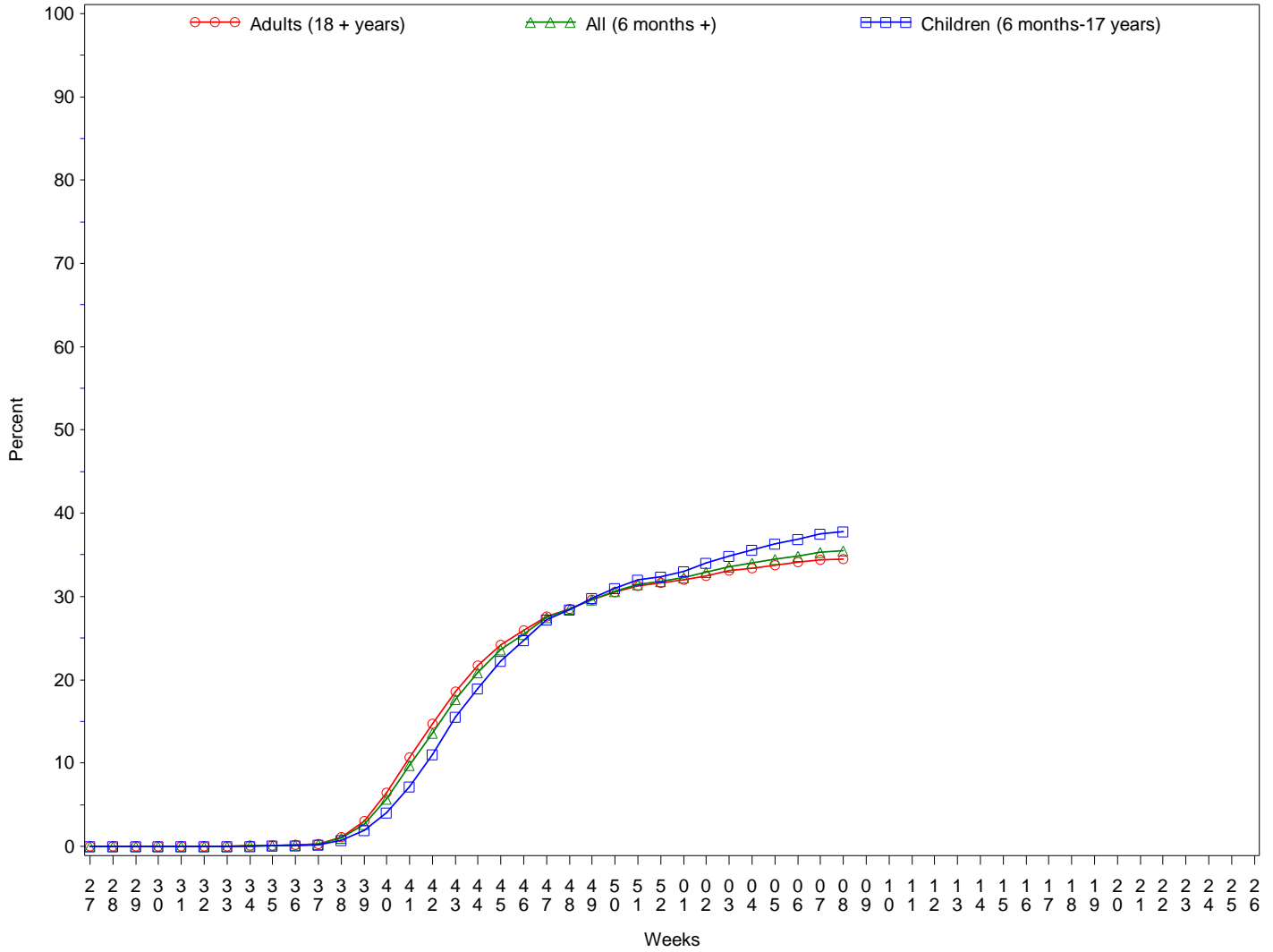
IHS Areas	% in Week 7	% in Week 8
NATIONAL	2.2	1.8
ALASKA	0.5	0.6
ALBUQUERQUE	2.4	1.7
BEMIDJI	1.7	2.4
BILLINGS	2.0	2.1
CALIFORNIA	1.6	1.3
GREAT PLAINS	2.5	2.0
NASHVILLE	2.2	1.9
NAVAJO	3.2	2.5
OKLAHOMA	1.8	1.1
PHOENIX	2.9	2.5
PORTLAND	1.6	1.4
TUCSON	1.9	1.7

Percentage of ILI visits is number of ILI visits divided by total number of daily visits.

## IHS Influenza Vaccination Surveillance

- As of 2/21/2015, sites reporting to the IIAS have administered 433,522 doses (1st and 2nd) of seasonal influenza vaccine to Active Clinical patients.

All IHS Areas  
 Cumulative One-Dose Seasonal Influenza Vaccine Coverage  
 06/29/14 to 2/21/15  
 Active Clinical Population



## Influenza Vaccination Coverage by Age Group\*

Age Group	Active Clinical Population**	Seasonal Flu Vaccine (At Least 1 Dose)***	% Seasonal Flu (At Least 1 Dose)	Seasonal Flu Vaccine (At Least 2 Doses)	% Seasonal Flu (At Least 2 Doses)	Total #Doses Administered****
0 - 5 months	5,463	133	2.4	4	0.1	137
6 - 23 months	27,074	16,552	61.1	4,489	16.6	21,088
2 - 4 years	65,885	23,062	35.0	591	0.9	23,733
5 - 17 years	247,192	89,044	36.0	905	0.4	90,291
18 - 49 years	521,918	142,302	27.3	1,642	0.3	144,493
50 - 64 years	210,404	91,203	43.3	1,078	0.5	92,685
65 + years	117,529	59,998	51.0	863	0.7	61,232
Children (6 months-17 years)	340,151	128,658	37.8	5,985	1.8	135,112
Adults (18 + years)	849,851	293,503	34.5	3,583	0.4	298,410
All (6 months +)	1,190,002	422,161	35.5	9,568	0.8	433,522

\* Limited to sites that exported both doses administered and active clinical population data.

\*\* Active Clinical is defined as patients who have had at least 2 visits in the last 3 years.

\*\*\* Number of unique patients with at least 1 dose.

\*\*\*\* Total # Doses Administered = All doses administered to patients including doses not included in coverage calculation due to lack of Active Clinical Population data.

## Influenza Vaccination Doses Administered by Influenza Vaccination Type\*

Area	Inactive CVX Codes*	CVX 88 FLU-NOS**	CVX 111 FLU-LAIV3	CVX 135 FLU-HIGH	CVX 140 FLU-IIV3pf	CVX 141 FLU-IIV3	CVX 144 FLU-Dermal	CVX 149 FLU-LAIV4	CVX 150 FLU-IIV4pf	CVX 153 FLU-cclIV3	CVX 155 FLU-RIV3	CVX 158 IIV4	CVX 161 IIV4pf-ped	Proc 99.52 Vac Inf	ICD-9 V04.81 Vac Inf	CPT Billing Codes+	Cumulative # of Doses Seasonal Flu
AKA	58	167	9	352	36	4488	.	852	2684	119	3	4543	2	1	189	152	13655
ALB	128	353	15	1147	705	15955	252	2668	6704	1	1	2871	65	.	141	220	31226
BEM	157	303	61	391	764	9097	46	1494	2253	6	1	726	16	.	771	109	16195
BIL	114	211	7	962	312	5419	1	2253	11985	1	.	1226	.	1	117	159	22768
CAO	149	263	5	1054	1747	14594	555	2393	4316	1	2	1598	71	.	380	515	27643
GPA	47	250	15	504	461	17250	45	3423	8702	3	3	5536	40	1	1265	72	37617
NSA	347	179	2	161	251	6819	436	692	3592	1	6	439	3	26	193	236	13383
NAV	199	574	46	474	5798	73523	.	4542	9004	3	1	6607	400	6	580	734	102491
OKC	228	3365	112	3479	267	59119	413	5677	24590	16	4	4321	12	292	1131	219	103245
PHX	112	636	10	1617	380	19441	108	4892	22289	3	6	2557	102	10	494	592	53249
POR	207	771	113	804	1386	12743	342	2955	5629	20	13	4808	206	.	346	356	30699
TUC	.	39	2	12	16	667	1	411	7859	.	2	1054	1	1	356	26	10447
	<b>1746</b>	<b>7111</b>	<b>397</b>	<b>10957</b>	<b>12123</b>	<b>239115</b>	<b>2199</b>	<b>32252</b>	<b>109607</b>	<b>174</b>	<b>42</b>	<b>36286</b>	<b>918</b>	<b>338</b>	<b>5963</b>	<b>3390</b>	<b>462618</b>

\* Inactive CVX Codes 15 (FLU-TIVhx), 16 (FLU-WHOLE), 123 (FLU-H5N1), and 151 (FLU-NasNOS) should not be used to document flu vaccines given this flu season.

\*\* CVX Code 88 (FLU-NOS) should only be used to document flu vaccines given elsewhere when flu vaccine type is unknown.

+ CPT Flu codes include: 90654-90662, 90672-90673, 90685-90686, 90724, G0008, G8108.

^ ICD9 codes V04.8 and V06.6 are not displayed on this report and are not used in any of the influenza vaccine coverage calculations.

- This report includes data from the following number of Resource and Patient Management System (RPMS) databases:

<b>IHS Area</b>	<b># of RPMS Databases Reporting*</b>	<b># of Facilities Reporting**</b>
NATIONAL	176	346
ALASKA	9	29
ALBUQUERQUE	15	24
BEMIDJI	7	11
BILLINGS	13	27
CALIFORNIA	27	47
GREAT PLAINS	17	31
NASHVILLE	18	26
NAVAJO	7	30
OKLAHOMA	19	43
PHOENIX	18	34
PORTLAND	24	33
TUCSON	2	11

\* Exporting databases may include data from multiple facilities.

\*\* Includes only facility categories: Hospital, Health Center, Health Station, Health Location, Alaska Village Clinic.