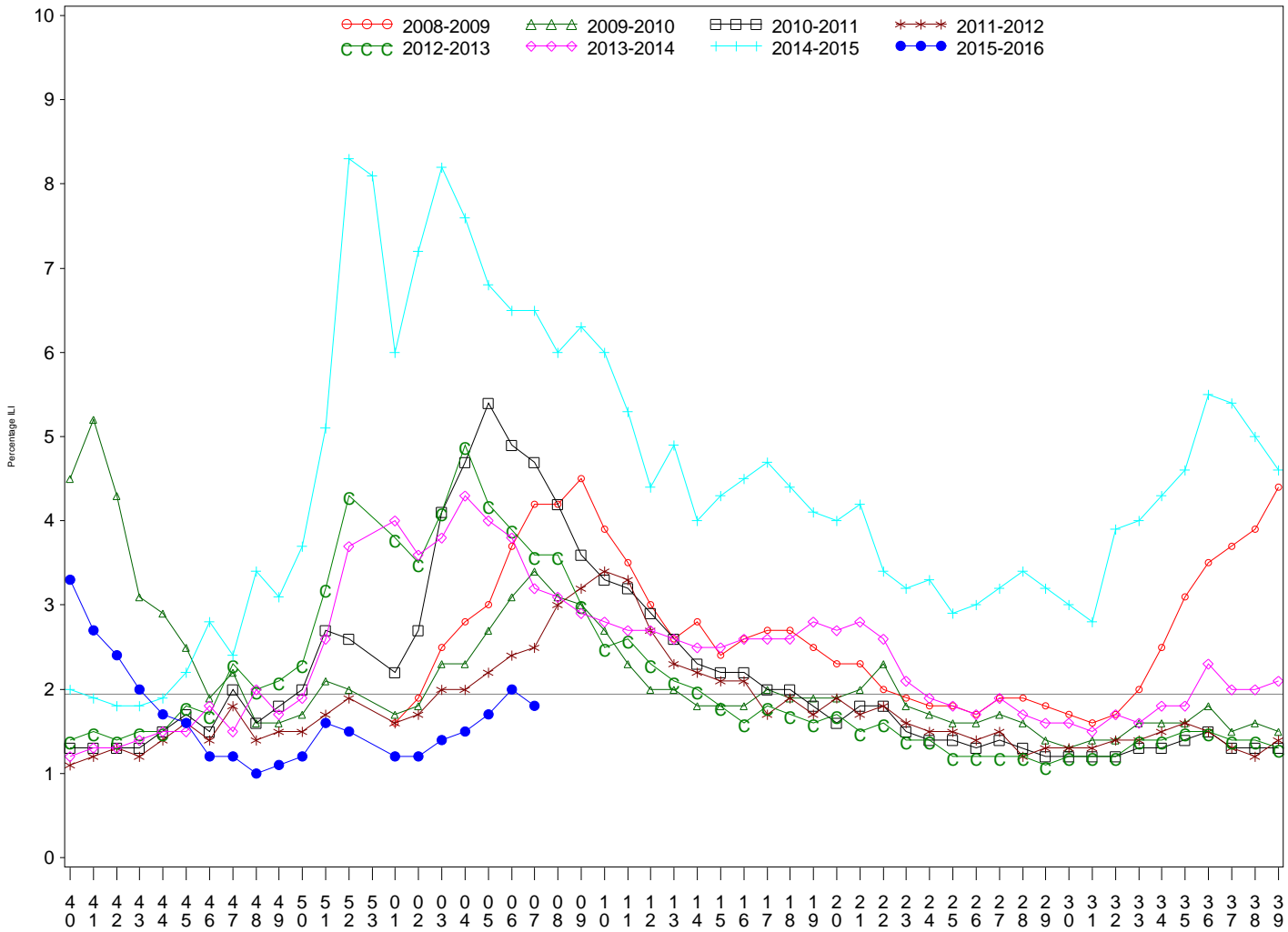




**Indian Health Service**  
 Division of Epidemiology and Disease Prevention  
**Influenza Surveillance Report**  
*IHS Influenza Awareness System (IIAS)*  
**(Week 7: 2/14/2016 – 2/20/2016)**

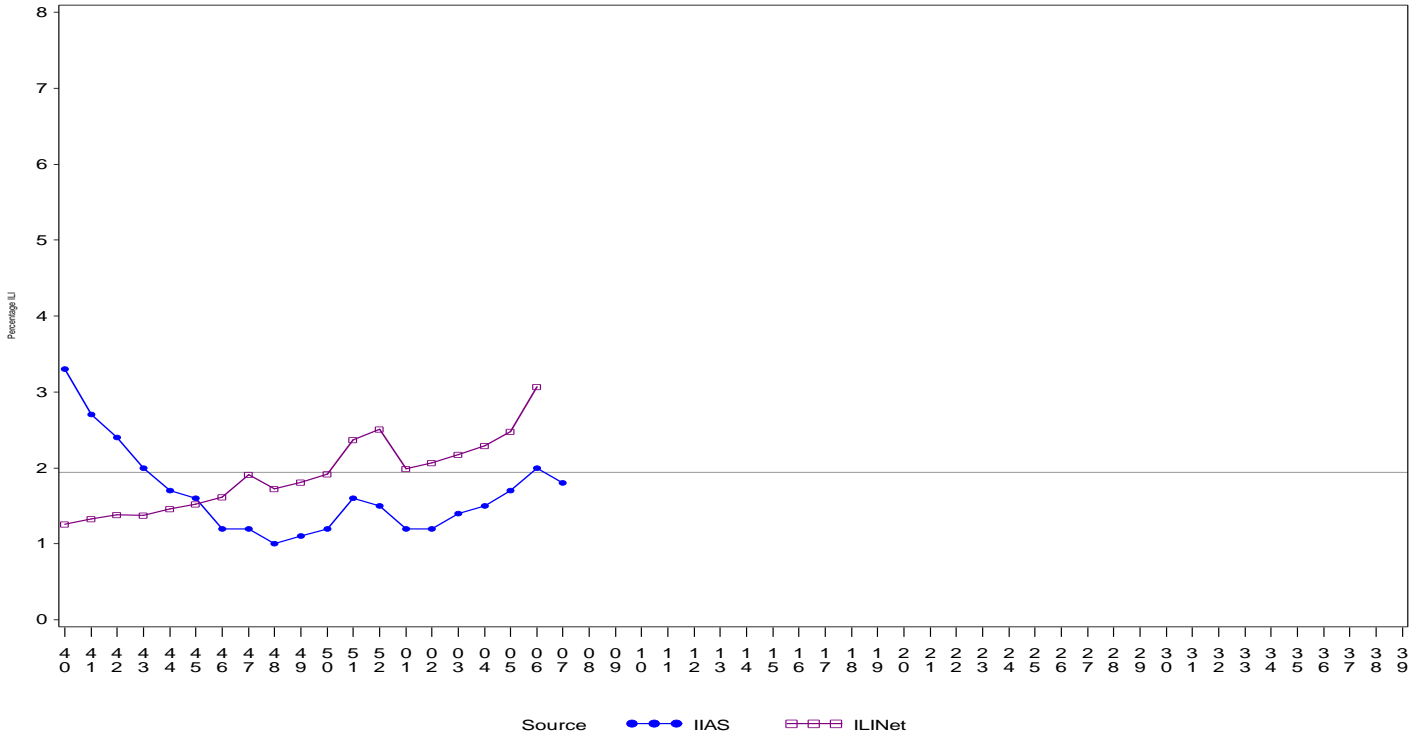
- Influenza-like-illness (ILI) activity in IHS is increasing but remains below the national baseline.
- To date IHS has administered over 362,000 doses of influenza vaccine.
- Overall, 33% of the IHS Active Clinical population received an influenza vaccine this season.

All IHS Areas  
 Influenza-Like Illness (ILI) for All Surveillance Years  
 Percentage of Visits for ILI per week  
 01/04/09 to 02/20/16



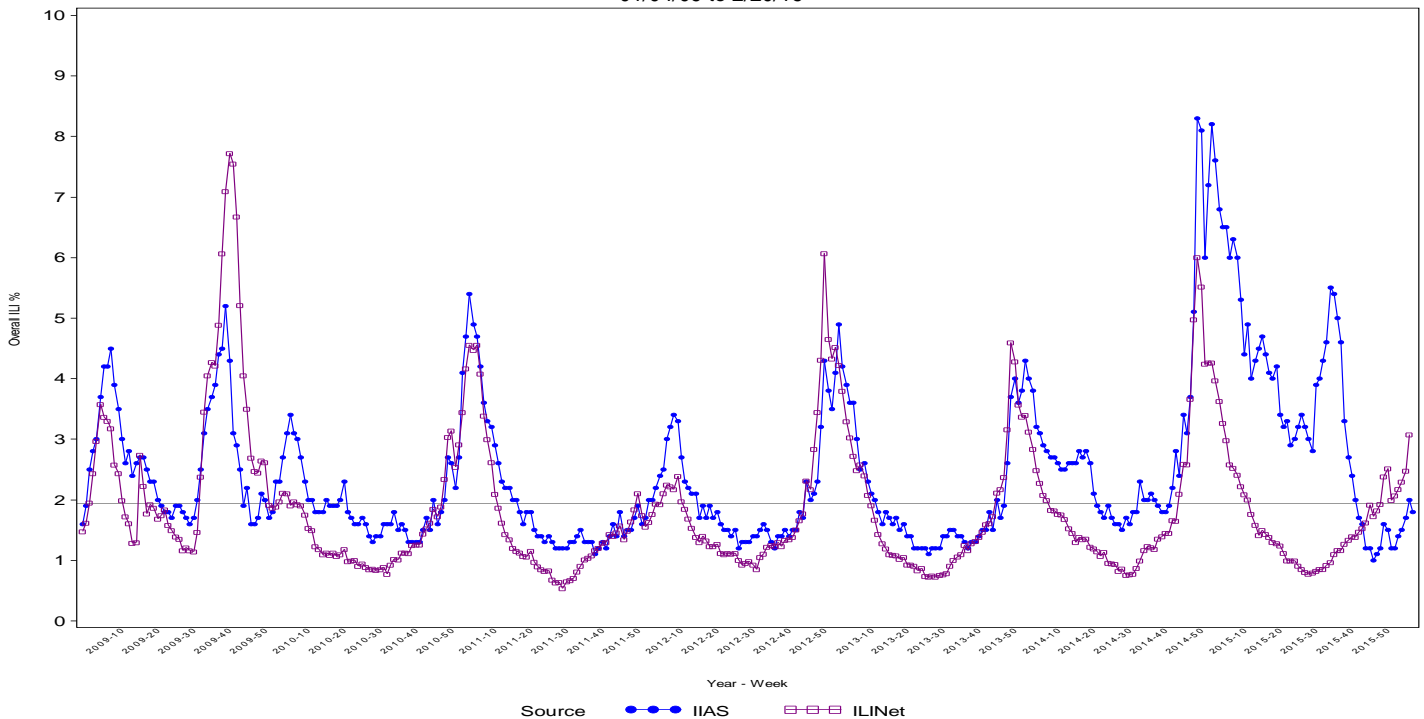
Percentage of ILI visits is number of ILI visits divided by total number of daily visits.  
 The horizontal line represents the 2014-2015 baseline. The baseline is the mean percentage of patient visits for ILI during non-influenza weeks for the previous three seasons plus two standard deviations.  
 Sources: ILINet - CDC Sentinal Surveillance System for Influenza-Like Illness, IIAS - IHS Influenza Awareness System

Proportion of Outpatient Visits for Influenza-Like Illness (ILI)  
 Percent ILI for Flu Year 2015 - 2016  
 ILINet vs. IIAS  
 10/04/15 to 2/20/16



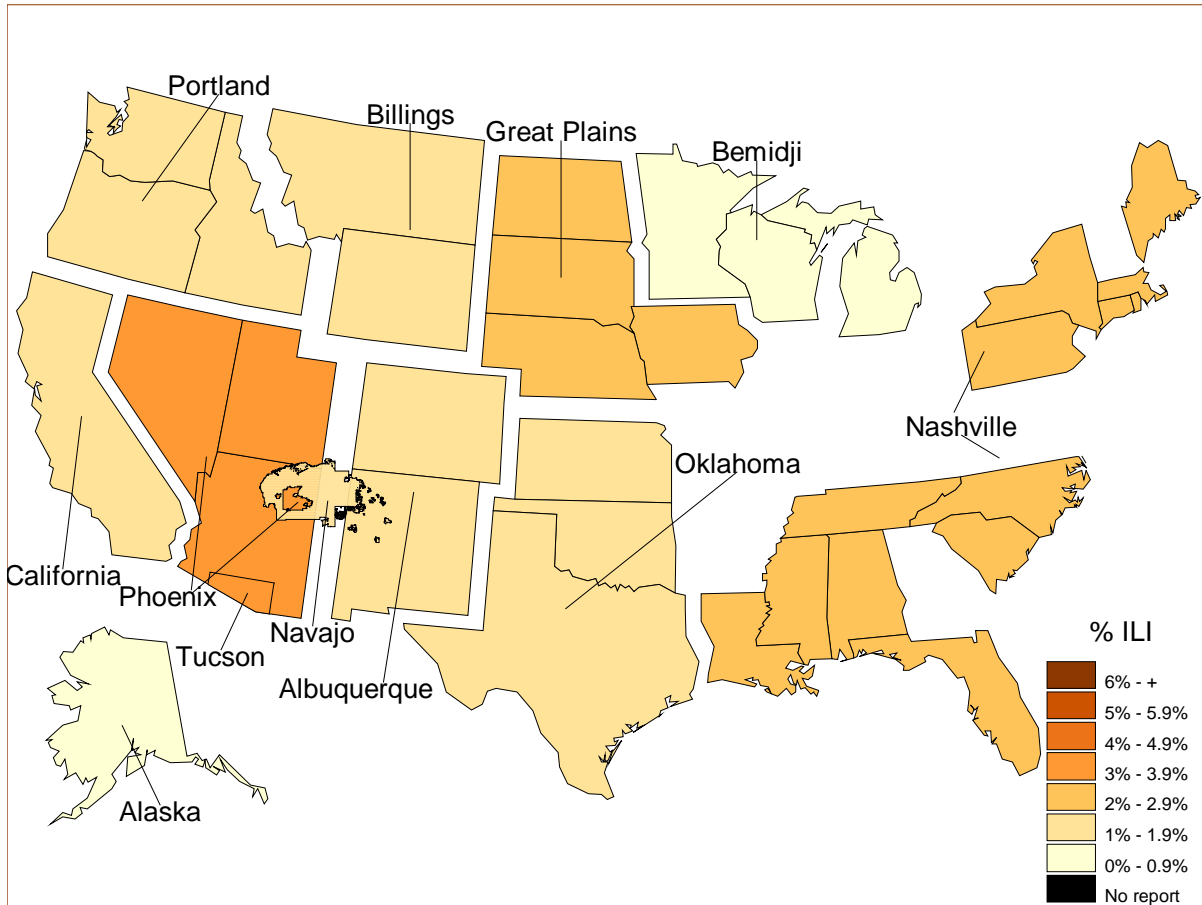
Percentage of ILI visits is number of ILI visits divided by total number of daily visits (outpatient visits).  
 The horizontal line represents the 2014-2015 baseline. The baseline is the mean percentage of patient visits for ILI during non-influenza weeks for the previous three seasons plus two standard deviations.

IIAS versus ILINet  
 Influenza-Like Illness (ILI) All Surveillance Years - Continuous  
 Percentage of Visits for ILI per week  
 01/04/09 to 2/20/16



Percentage of ILI visits is number of ILI visits divided by total number of daily visits (outpatient visits).  
 The horizontal line represents the 2014-2015 baseline. The baseline is the mean percentage of patient visits for ILI during non-influenza weeks for the previous three seasons plus two standard deviations.

Percentage of Influenza-Like Illness Visits by IHS Area  
For Week: 7



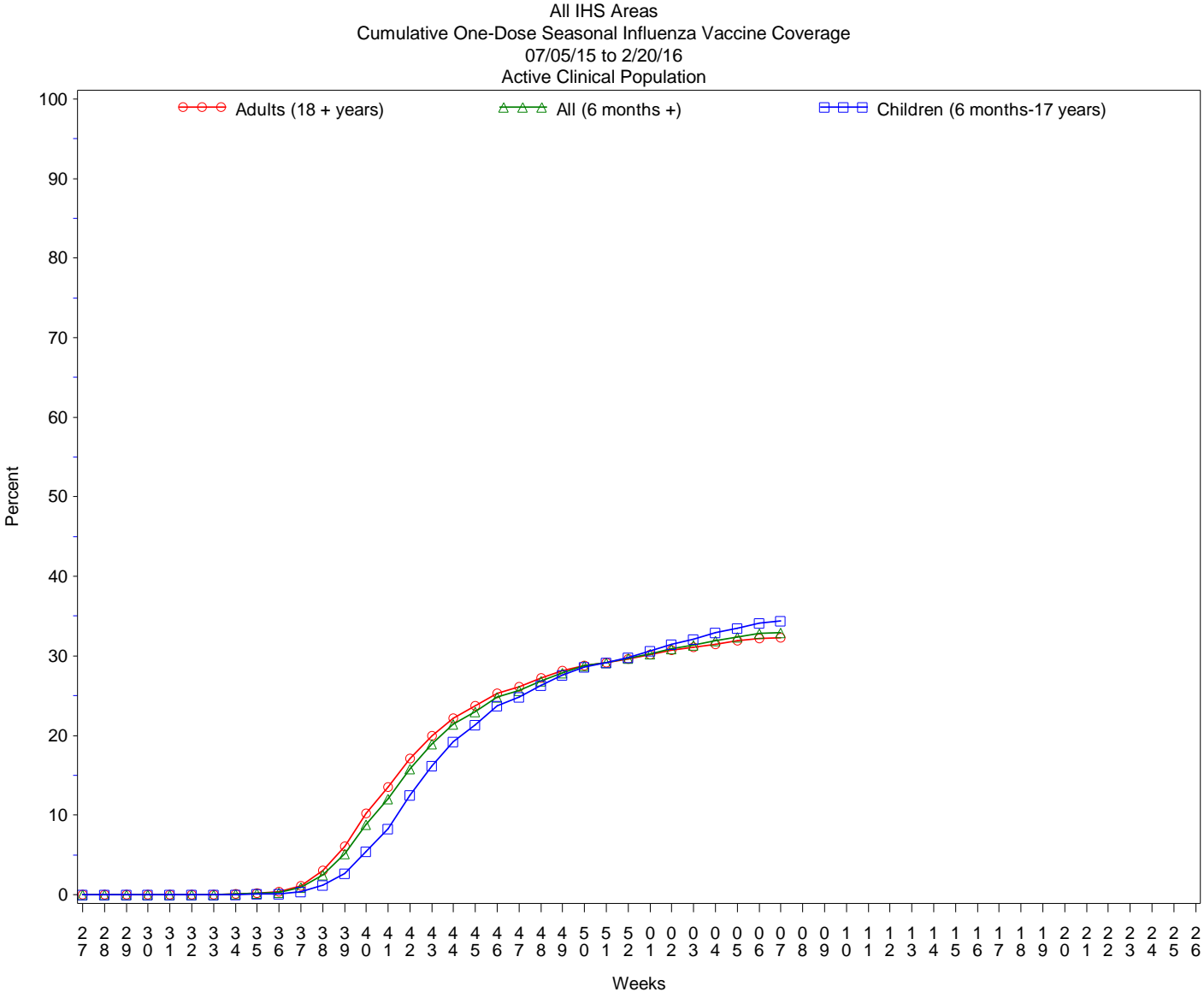
% Visits for ILI Compared to Previous Week

IHS Areas	% in Week 6	% in Week 7
NATIONAL	2.0	1.8
ALASKA	0.8	0.9
ALBUQUERQUE	1.7	1.6
BEMIDJI	1.6	0.7
BILLINGS	1.7	1.7
CALIFORNIA	1.6	1.3
GREAT PLAINS	1.8	2.1
NASHVILLE	1.8	2.1
NAVAJO	2.4	1.2
OKLAHOMA	0.9	1.0
PHOENIX	3.3	3.7
PORTLAND	1.5	1.5
TUCSON	4.0	3.5

Percentage of ILI visits is number of ILI visits divided by total number of daily visits.

# IHS Influenza Vaccination Surveillance

- As of 2/20/2016, sites reporting to the IIAS have administered 362,364 doses (1st and 2nd) of seasonal influenza vaccine to Active Clinical patients.



## Influenza Vaccination Coverage by Age Group\*

Age Group	Active Clinical Population**	Seasonal Flu Vaccine (At Least 1 Dose)***	% Seasonal Flu (At Least 1 Dose)	Seasonal Flu Vaccine (At Least 2 Doses)	% Seasonal Flu (At Least 2 Doses)	Total #Doses Administered****
0 - 5 months	4,901	94	1.9	33	0.7	128
6 - 23 months	24,174	13,798	57.1	3,746	15.5	17,600
2 - 4 years	59,506	18,372	30.9	513	0.9	18,998
5 - 17 years	222,613	73,146	32.9	548	0.2	74,153
18 - 49 years	463,435	119,263	25.7	839	0.2	121,098
50 - 64 years	192,698	77,174	40.0	588	0.3	78,395
65 + years	109,450	51,078	46.7	558	0.5	52,120
Children (6 months-17 years)	306,293	105,316	34.4	4,807	1.6	110,751
Adults (18 + years)	765,583	247,515	32.3	1,985	0.3	251,613
All (6 months +)	1,071,876	352,831	32.9	6,792	0.6	362,364

\* Limited to sites that exported both doses administered and active clinical population data.

\*\* Active Clinical is defined as patients who have had at least 2 visits in the last 3 years.

\*\*\* Number of unique patients with at least 1 dose, doses deduplicated.

\*\*\*\* Total # Doses Administered = All doses administered to patients including doses not included in coverage calculation due to lack of Active Clinical Population data.

## Influenza Vaccination Doses Administered by Influenza Vaccination Type\*

Area	INACTIV E CVX CODES*	CVX 88 FLU-NOS**	CVX 111 FLU-LAIV3	CVX 135 FLU-HIGH	CVX 140 FLU-IIV3pf	CVX 141 FLU-IIV3	CVX 144 FLU-DER-MAL	CVX 149 FLU-LAIV4	CVX 150 FLU-IIV4pf	CVX 153 FLU-ccIIV3	CVX 155 FLU-RIV3	CVX 158 IIV4	CVX 161 IIV4pf -ped	CVX 166	Proc 99.52 Vac Inf	ICD-9 V04.81 Vac Inf	CPT Billing Codes+	Cumulative # of Doses Seasonal Flu
AKA	22	265	4	325	360	1048	3	952	4744	80	.	4338	444	42	.	4	120	12751
ALB	52	202	20	1487	5396	15116	1	2313	1430	1	200	1557	918	10	.	10	378	29091
BEM	180	96	6	349	427	6648	88	1002	1680	2	3	901	298	2	.	66	114	11862
BIL	7	243	4	1124	8548	4221	1	1970	3976	.	.	701	489	1	.	15	137	21437
CAO	123	321	9	1381	2467	5836	9	1854	5595	.	1	4763	662	57	.	16	312	23406
GPA	228	899	60	531	5467	16397	1	2122	4308	2	5	4643	1503	6	.	30	93	36295
NSA	2	131	.	243	1447	6650	156	467	3099	1	10	312	86	299	.	8	164	13075
NAV	182	388	6	1008	355	69647	2	1085	10215	1	2	4264	1973	206	.	73	609	90016
OKC	1026	2344	138	2199	1629	32600	41	1885	5334	3	19	2838	1079	445	33	40	264	51917
PHX	22	533	9	2047	10949	19659	16	2400	9445	.	6	772	2507	25	2	42	409	48843
POR	31	667	26	963	2103	11809	4	2249	3713	27	13	3141	416	529	.	95	156	25942
TUC	.	129	1	40	5761	362	2	313	1278	.	.	45	618	1	.	27	81	8658
	<b>1875</b>	<b>6218</b>	<b>283</b>	<b>11697</b>	<b>44909</b>	<b>189993</b>	<b>324</b>	<b>18612</b>	<b>54817</b>	<b>117</b>	<b>259</b>	<b>28275</b>	<b>10993</b>	<b>1623</b>	<b>35</b>	<b>426</b>	<b>2837</b>	<b>373293</b>

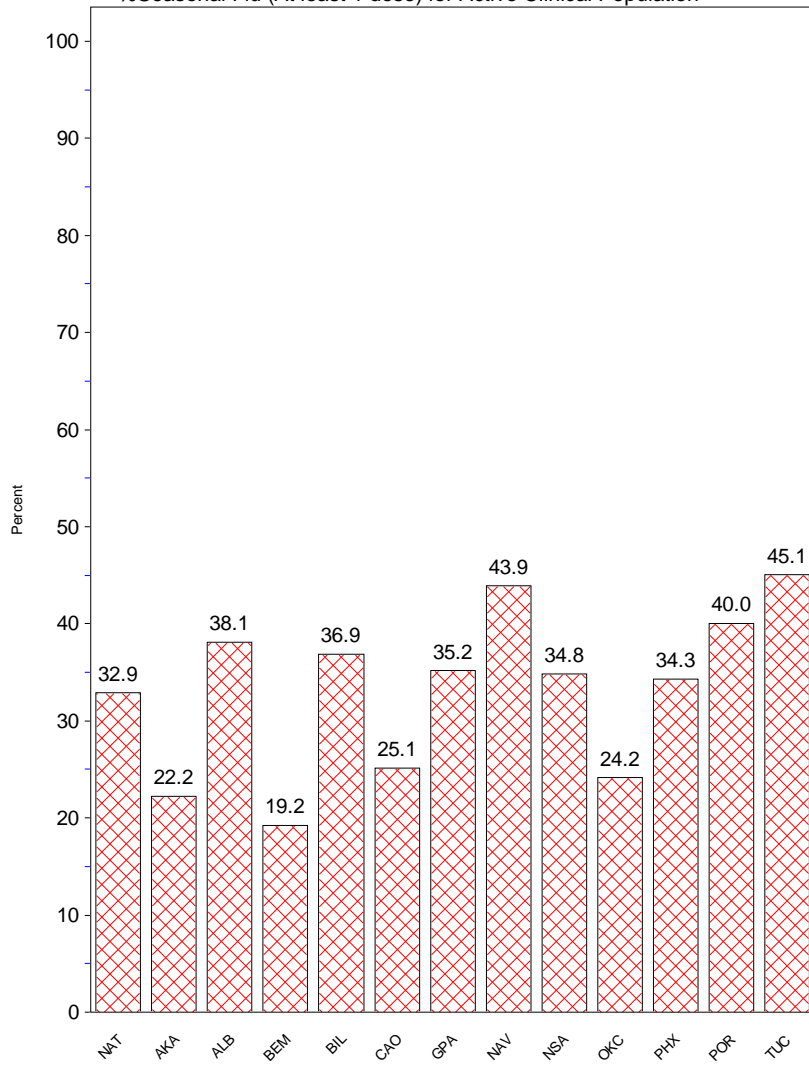
\* Inactive CVX Codes 15 (FLU-TIVhx), 16 (FLU-WHOLE), 123 (FLU-H5N1), and 151 (FLU-NasNOS) should not be used to document flu vaccines given this flu season. Doses are NOT deduplicated.

\*\* CVX Code 88 (FLU-NOS) should only be used to document flu vaccines given elsewhere when flu vaccine type is unknown.

+ CPT Flu codes include: 90654-90662, 90672-90673, 90685-90686, 90724, G0008, G8108.

^ ICD9 codes V04.8 and V06.6 are not displayed on this report and are not used in any of the influenza vaccine coverage calculations.

All IHS Areas  
Influenza Vaccine Coverage by Age Groups – All (6 mons+)  
07/05/15 to 2/20/16  
%Seasonal Flu (At least 1 dose) for Active Clinical Population



- This report includes data from the following number of Resource and Patient Management System (RPMS) databases:

<b>IHS Area</b>	<b># of RPMS Databases Reporting*</b>	<b># of Facilities Reporting**</b>
NATIONAL	151	253
ALASKA	11	49
ALBUQUERQUE	10	11
BEMIDJI	5	10
BILLINGS	12	19
CALIFORNIA	20	36
GREAT PLAINS	16	26
NASHVILLE	18	23
NAVAJO	2	5
OKLAHOMA	18	22
PHOENIX	16	23
PORTLAND	22	25
TUCSON	1	4

\* Exporting databases may include data from multiple facilities.

\*\* Includes only facility categories: Hospital, Health Center, Health Station, Health Location, Alaska Village Clinic.