



Telehealth / Telemedicine Overview

5 April 2016

Sioux Falls, SD

Break Out Session Agenda

- Provide Background of Telehealth and Telemedicine
- Identify what Telehealth Services are currently available
- Provide information about TeleBehavioral Health Center of Excellence
- Discuss current Telehealth program status of Great Plains Area (GPA)
- Discuss future Telehealth program status of GPA
- Questions

Background

- Telemedicine / Telehealth Definition
- Telehealth Services currently available within Indian Health Service (IHS)
 1. TeleBehavioral Health Center of Excellence
 2. Teleophthalmology
 3. Teleradiology
 4. Pediatric Emergency Department (ED) Telehealth Service (Albuquerque Area)
 5. Medical ED Telehealth Service (Billings Area)
 6. Teledermatology (Nashville Area → expanding to Albuquerque Area)
 7. Telewoundcare (Oklahoma Area)
 8. Telenutrition (Phoenix Area)

Benefits

- Benefits
 - Improved access
 - The right care, at the right place, and at the right time
 - Cost efficiencies and improved clinical value (quality/cost)
 - Improved quality of care and clinical outcomes
 - For patients:
 - ✓ Reduced travel times
 - ✓ Increased access to primary and specialty care
 - ✓ Improved patient satisfaction

1. http://www.americantelemed.org/about-telemedicine/what-is-telemedicine#.Vv0_7U2FOpo
2. <http://annals.org/article.aspx?articleid=2434625>

TeleBehavioral Health Center of Excellence (TBHCE)

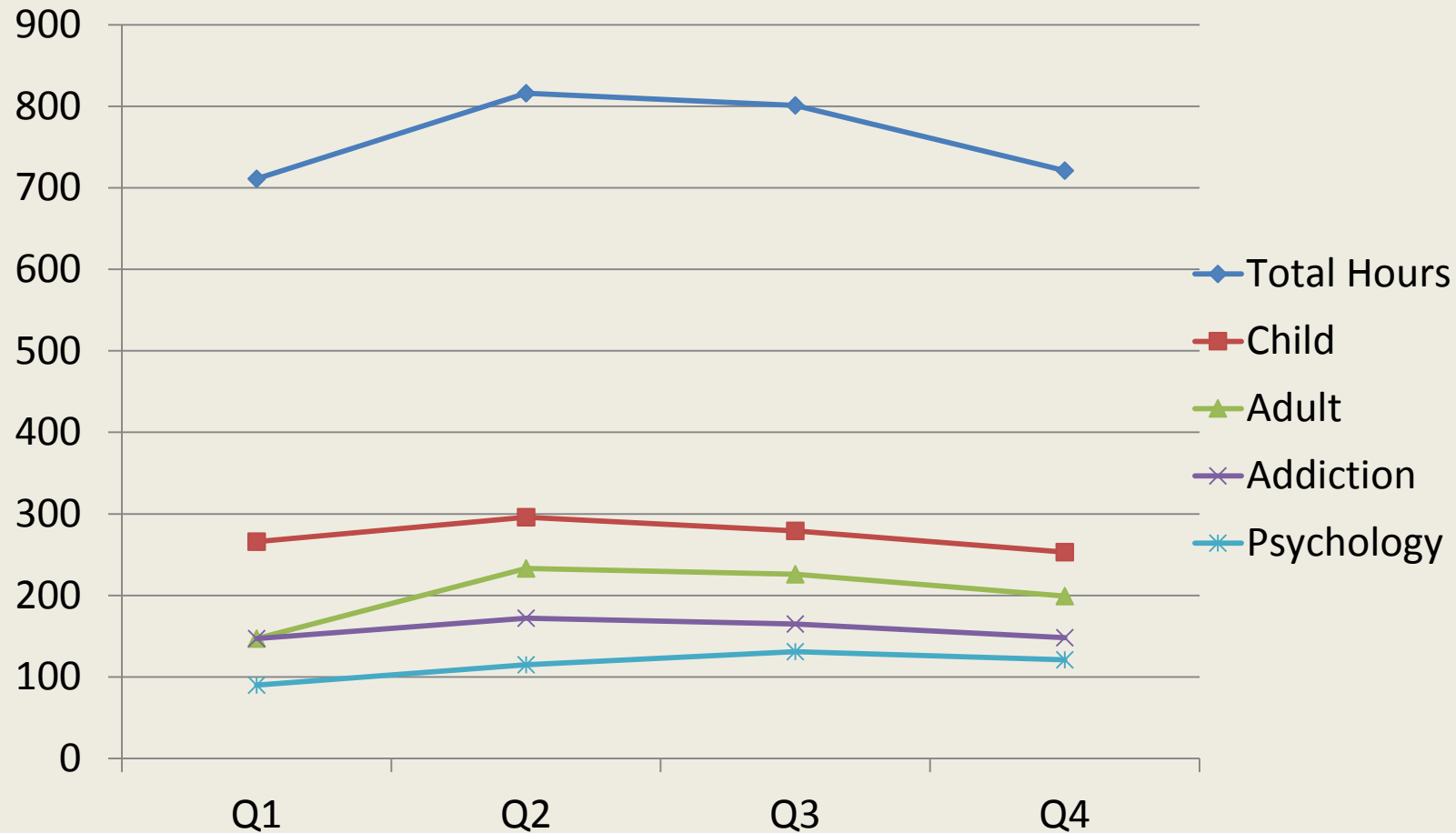
Dr. Chris Fore (Director of TBHCE)

- Provides ongoing outpatient psychiatry and counseling services
- Occurs in real time
- 2015 Highlights
 - 5,685 patient visits
 - 3,047 hours of service
- Resource Information
 - TeleBehavioral Health Center of Excellence Toolkit
 - TeleBehavioral Health Implementation Checklist from the TBHCE
 - Website: <https://www.ihs.gov/telebehavioral/index.cfm/telehealth/>

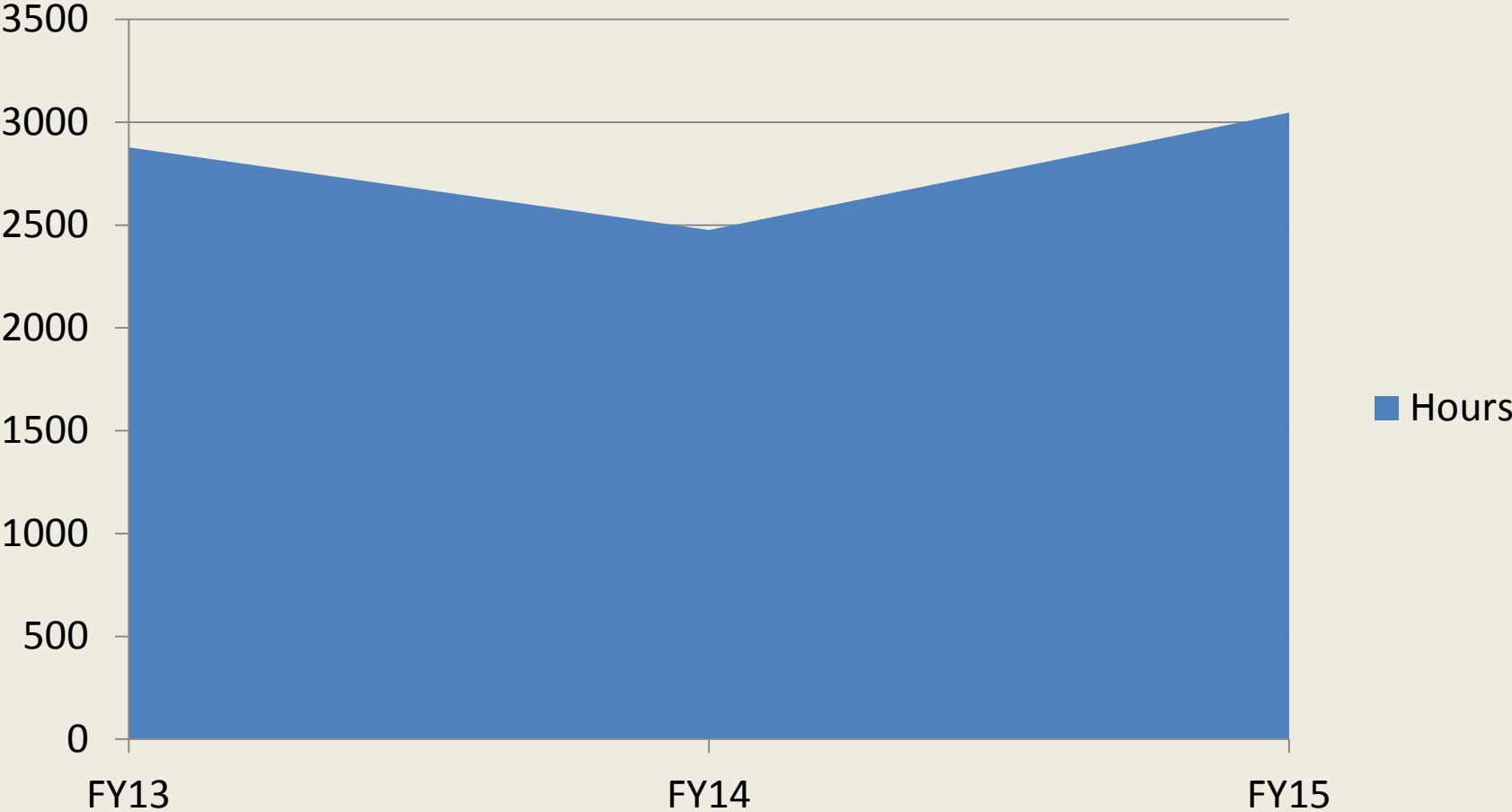


TeleBehavioral Health Center of Excellence

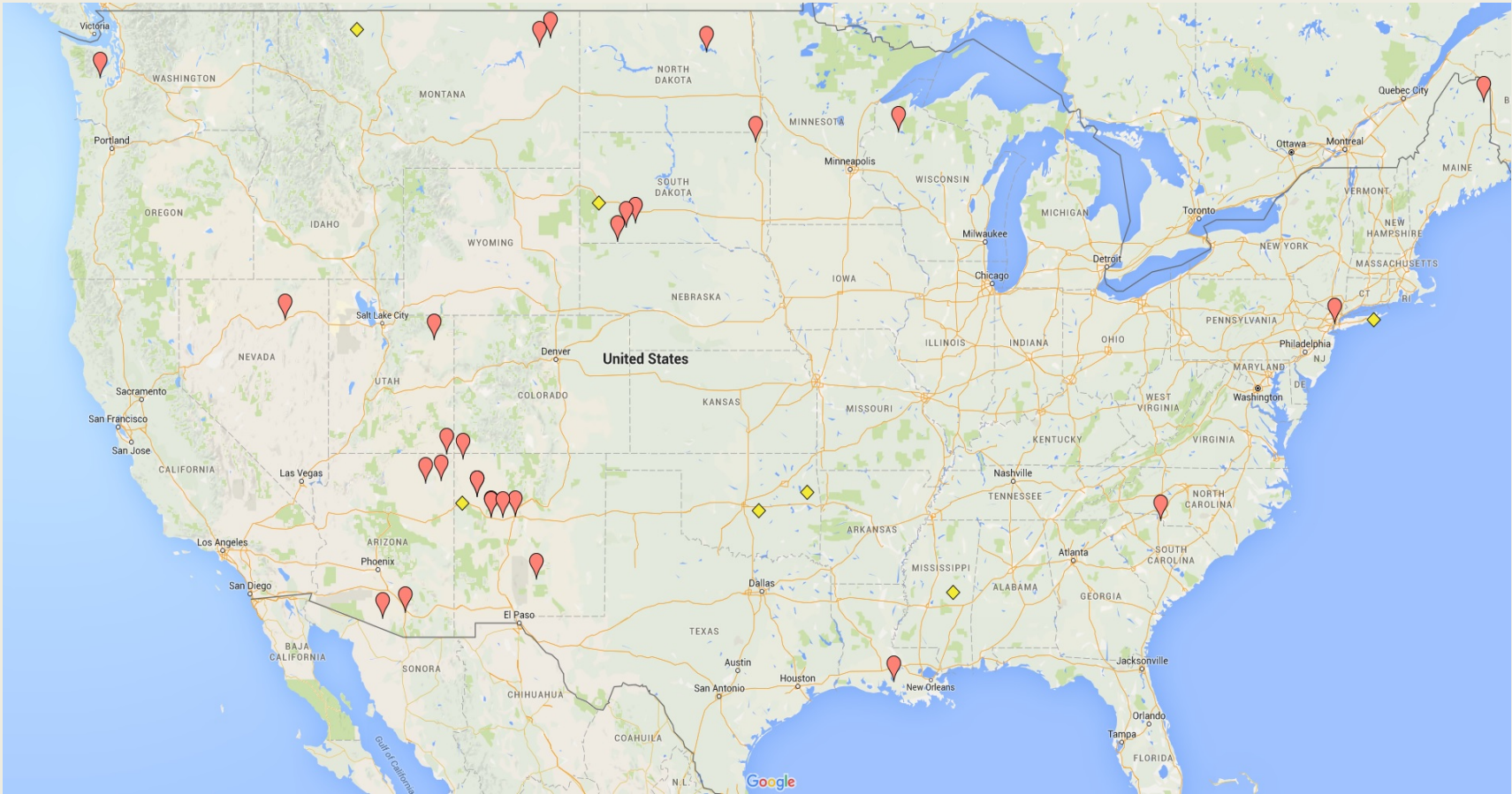
FY 2015 Clinical Hours



TeleBehavioral Health Center of Excellence Total Clinical Hours



TeleBehavioral Health Sites



IHS-Joslin Vision Network Teleophthalmology Program

Dr. Mark Horton (Director IHS-JVN Program)

- Provides remote diagnosis and management of diabetic retinopathy
- Preventing Diabetes-Related Blindness in American Indians and Alaska Natives
- Store and forward, not real time
- 2015 Highlights
 - IHS JVN Eye exams = 19,184
- Resource Information
 - <https://www.ihs.gov/teleophthalmology/>



JVN Physical Components



Retinal Cameras



Diagnostic Display
(National Reading Center)



Diabetic Retinopathy Surveillance

IHS-JVN Teleophthalmology Program

96 Fixed/Hybrid sites + 13 Portable Sites in 25 States



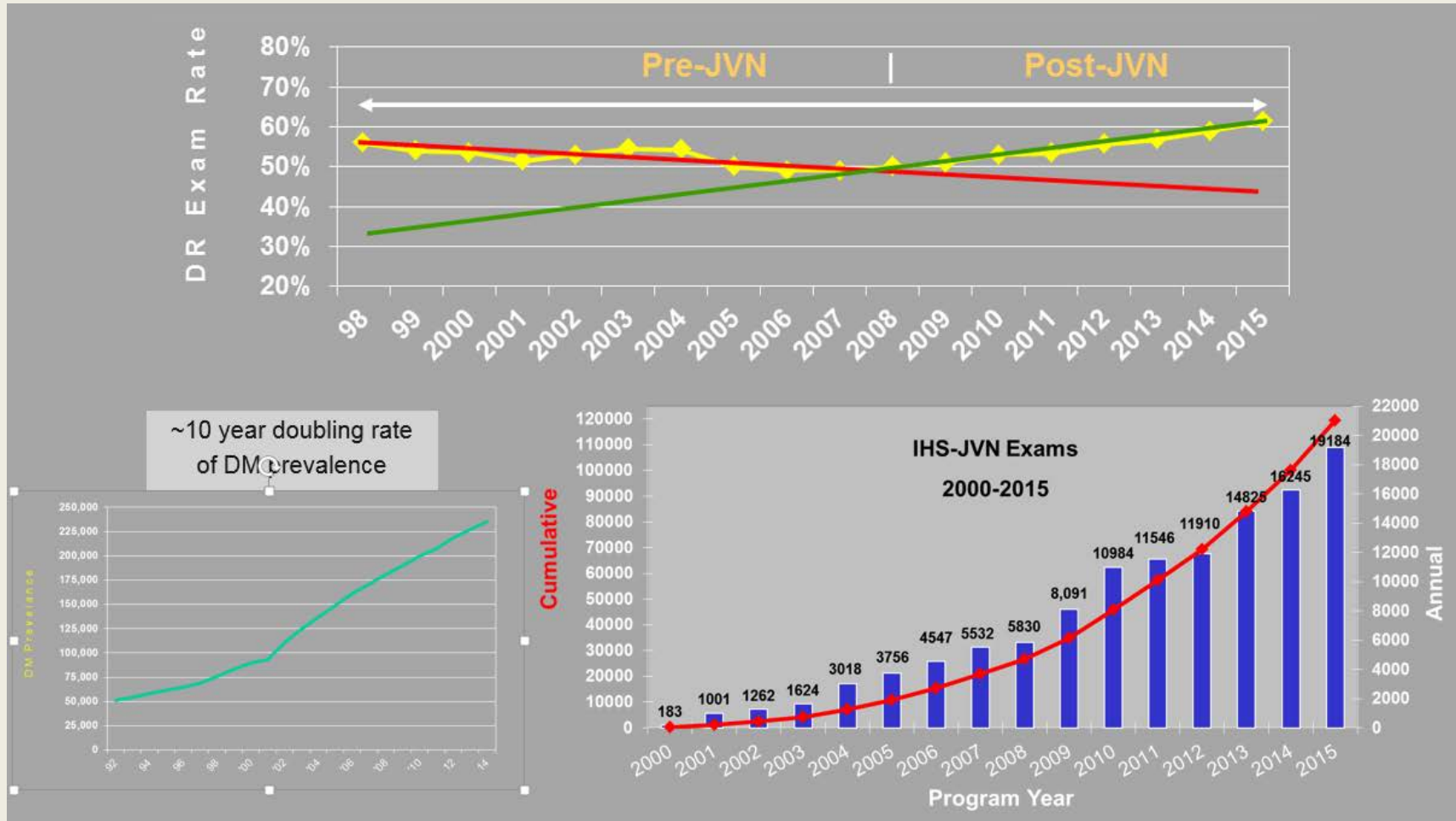
- Phoenix, AZ
- Sacaton, AZ
- Polacca, AZ
- Pinon, AZ
- San Carlos, AZ
- Salt River, AZ
- Ft. Yuma, AZ
- Whiteriver, AZ
- Sells-, AZ
- Tuba City, AZ
- Tucson, AZ
- Parker, AZ
- Peach Springs, AZ
- San Xavier, AZ
- Kayenta, AZ
- Chinle, AZ
- Flagstaff, AZ
- Inscription House, AZ
- Navajo Mountain, AZ
- Elko, NV
 - Goshute, NV
 - Ely, NV
 - Duckwater, NV
- Owyhee, NV
- Reno Sparks, NV
- Fallon, NV
- Claremore, OK
- Wewoka, OK
- Eufaula, OK
- Okmulgee, OK
- Oklahoma City, OK
- Tahlequah, OK
- Lawton, OK
- Carnegie, OK
- Miami, OK
- Anadarko, OK
- Portland, OR
- Warm Springs, OR
- Salem, OR
- Cow Creek, OR
- Klamath, OR
- Pendleton, OR
- Nespelem, WA
- Yakama, WA
- Wellpinit, WA
- Tacoma, WA
- Fort Hall, ID
- Lapwai, ID
- Plummer, ID
- Pine Ridge, SD
- Rosebud, SD
- Rapid City, SD
- Sisseton, SD
- Wagner, SD
- Eagle Butte, SD
- Spirit Lake, ND
- Ft. Yates, ND
- Belcourt, ND
- Ft. Peck, MT
- Ft Belknap, MT
- Crow Agency, MT
- Lame Deer, MT
- Browning, MT
- Ft Washakie, WY
- Red Lake, MN
- Cass Lake, MN
- White Earth, MN
- Lawrence, KS
- Mayetta, KS
- Shiprock, NM
- Santa Fe, NM
- Albuquerque, NM
- Mescalero, NM
- Crown Point, NM
- Jicarilla, NM
- San Fidel, NM
- Dallas, TX
- Winnebago, NE
- Hayward, WI
- Mt Pleasant, MI
- Oneida, NY
- Charlestown, RI
- Fairbanks, AK
- Bristol Bay, AK
- Ketchikan, AK
 - Metlakatla, AK
- Rock Hill, SC
- Cherokee, NC
- U&O, UT
- Presque Isle, ME
- Indian Island, ME
- Philadelphia, MS

Portable Deployments

- Alaska- EAT, APIA
- North Carolina
- Oklahoma- Redbird
 - Sam Hider Jay
- Arizona- Supai
- Nevada- Schurz, Loveloc
 - Yerington
- Maine- Littleton,
 - Princeton,
 - Pleasant Point

Clinical Outcome

IHS DR Exam Rate pre/post JVN Ramp-up



Current State: Great Plains Area (GPA)

- TeleBehavioral Health Center of Excellence
 - Provided since 2012
 - Offered at **six sites**
- IHS-Joslin Vision Network Teleophthalmology
 - Provided since 2003
 - Offered at **ten sites**
- Obtaining Telemedicine Services
 - Assessing Information Technology (IT) capabilities to support telemedicine services
 - Focus on **ED Telemedicine & Specialty Consultation Telemedicine/health**

Future State: Great Plains Area

- Implement the following Telehealth Services:
 - Behavioral Health
 - Cardiology
 - Maternal/Child Health
 - Nephrology
 - Pain Management
 - Pediatric Behavioral Health
 - Rheumatology
 - Wound Care
 - ENT

Questions to Group

- How can we work together to use telemedicine optimally to support quality health care in your community?
- How can telemedicine services best be used to expand and improve services for your community? In what types of care interactions are you in favor of expanded telemedicine?
- What telemedicine services are being considered and how will they impact current services?
- What will be the impact of telemedicine services on current hired staff at IHS facilities and jobs for local community members?
- How can current telemedicine services be improved?