

The Indian Health Service (IHS) TeleBehavioral Health Center of Excellence and the IHS Clinical Support Center (Accredited Provider) is pleased to announce Continuing Education in Behavioral Health for the following training:

Child and Adolescent Behavioral Health Webinar Series
**Autism Spectrum Disorder and Psychiatric Conditions:
Psychosis and Trauma/Stressor-Related Disorders**

To Register: https://ihs.gov.zoomgov.com/webinar/register/WN_FscHqkZ3RyGCavwB6IT_-A

October 11, 2024 | 2:00 pm EDT, 1:00 pm CDT, 12:00 pm MDT, 11:00 am PDT, 10:00 am AKDT

Duration: 1 hour

Presenter:

Michele Iemolo PsyD, BCBA, R-DMT and Dina E. Hill, PhD

Description:

This webinar will focus on developing health care providers' skills in the understanding of autism spectrum disorder and psychiatric disorders including psychosis and trauma/stressor-related disorders. Information will include comorbid and differential diagnostic considerations, possible overlapping versus distinguishing characteristics, identifying clinical presentations and discussion of possible interventions. Teaching tools will include a resource page and quick facts for providers.

Outcomes/Objectives:

1. Analyze overlapping versus distinguishing characteristics of Autism Spectrum Disorder with psychosis and trauma/stressor-related disorders.
2. Educate families on the clinical presentation of each psychiatric disorder in the context of Autism Spectrum Disorder.
3. Counsel families on the development of treatment intervention plans and accessing services (e.g., therapists, prescribing providers).

Content Level:

Beginner

Target Audience:

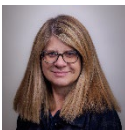
Members of the healthcare team

About the Presenter



Michele Iemolo is a Professor at New Mexico State University and Licensed Psychologist with experience in the screening, assessment, diagnosis and treatment of children with autism and related neurodevelopmental disabilities. Dr. Iemolo has extensive training and experience in treatment approaches for children and families including applied behavior analysis, dance-movement therapy, as well as parent coaching programs aimed at improving social communication. Dr. Iemolo has experience in providing trainings, workshops and didactics to professionals, parents as well as graduate trainees across the state.

Dina Hill is a licensed clinical neuropsychologist with experience in the assessment and diagnosis of children with genetic, neurological, and neurodevelopmental disorders. Over the past seven years, Dr. Hill has worked with the UNM CDD Prenatal Exposures Clinic and on the UNM Center grant investigating the effects of prenatal exposure on the developing child. Dr. Hill has a contract with Indian Health Services through UNM to develop and disseminate webinars in the area of neurodevelopmental disorders.



Instructions for Obtaining Continuing Education Credit:

To receive a certificate of continuing education you must:

- Electronically register for the session
- Participate in the entire live 1 hour activity. No partial credit will be given.
- Complete the online evaluation by **October 25, 2024**. You will be able to print your certificate after completing the evaluation.

ACCREDITATION:



In support of improving patient care, IHS Clinical Support Center is jointly accredited by the Accreditation Council for Continuing Medical Education (ACCME), the Accreditation Council for Pharmacy Education (ACPE), and the American Nurses Credentialing Center (ANCC), to provide continuing education for the healthcare team.

JOINTLY ACCREDITED PROVIDER[®]
INTERPROFESSIONAL CONTINUING EDUCATION



IPCE CREDIT™

This activity was planned by and for the health care team, and learners will receive 1.0 Interprofessional Continuing Education (IPCE) credit for learning and change.

Physicians

The IHS Clinical Support Center designates this live activity for 1 hour of *AMA PRA Category 1 Credit™* for each hour of participation. Physicians should claim only the credit commensurate with the extent of their participation in the activity.

Nurses

This activity is designated 1.0 contact hour for each hour of participation.

Physician Assistants



The IHS Clinical Support Center has been authorized by the American Academy of PAs (AAPA) to award AAPA Category 1 CME credit for activities planned in accordance with AAPA CME Criteria. This activity is designated for 1.0 AAPA Category 1 CME credit. PAs should only claim credit commensurate with the extent of their participation.

Social Workers



As a Jointly Accredited Organization, the IHS Clinical Support Center is approved to offer social work continuing education by the Association of Social Work Boards (ASWB) Approved Continuing Education (ACE) program. Organizations, not individual courses, are approved under this program. Regulatory boards are the final authority on courses accepted for continuing education credit. Social workers completing this course receive 1.0 clinical continuing education credit.

Psychologists



Continuing Education (CE) credits for psychologists are provided through the co-sponsorship of the American Psychological Association (APA) Office of Continuing Education in Psychology (CEP) and the IHS Clinical Support Center. The IHS Clinical Support Center maintains responsibility for the content of the program. Psychologists completing this course receive 1.0 continuing education credit.

Counselors

Many state Counselor boards (including the various types of addiction counselors, mental health counselors, etc.) accept either APA or ASWB approval. See these approvals under Psychologists and Social Workers. Please check with your board to be sure.

Attendance

Participants can select a certificate of attendance, enabling participants to register with licensing boards or associations that have not been preapproved for credits. To apply for credit types not listed above, participants should use the procedure established by the specific organization from which they wish to obtain credit.

Accreditation applies solely to this educational activity and does not imply approval or endorsement of any commercial product, services or processes by the CSC, IHS, the federal government, or the accrediting bodies.

Disclosure Statement: As a jointly accredited provider of continuing education, the IHS Clinical Support Center must ensure balance, independence, objectivity, and scientific rigor in its educational activities. Course directors/coordinators, planning committee members, faculty, reviewers and all others who are in a position to control the content of this educational activity are required to disclose the existence of all financial relationships with ineligible companies within the prior 24 months. Safeguards against commercial bias have been put in place. Faculty will also disclose any off-label and/or investigational use of pharmaceuticals or instruments discussed in their presentation. All those who are in a position to control the content of this educational activity have completed the disclosure process and have indicated that they do not have any relevant financial relationships or affiliations with any manufacturers or commercial products to disclose.

There is no commercial interest support for this educational activity.

Zoom First Time Users

If you have never attended a Zoom meeting before, you can download the Zoom desktop client here:

<https://zoom.us/support/download>

Requirements for Zoom

If you plan to join virtually, you must have a computer with broadband Internet access. For the best experience viewing the videos, use Microsoft Edge or Google Chrome. If you have trouble viewing this training on-line, check your system to make sure you have the appropriate hardware and software.

Privacy Policies

Before you begin the training, you can review the IHS Privacy Policy (<https://www.ihs.gov/privacypolicy/>). You can also review the Survey Monkey Privacy Policy for details on how user information submitted in the evaluation is protected. <http://www.surveymonkey.com/mp/policy/privacy-policy/>

Recording

All sessions are recorded for those unable to join them real-time, however, credit is not available for viewing the recording. You can access previous recordings at: <https://www.ihs.gov/teleeducation/webinar-archives/>
Calendar
<https://www.ihs.gov/teleeducation/webinars/>

TeleEducation LISTSERV

To subscribe to this list go to http://www.ihs.gov/listserv/topics/signup/?list_id=609

Questions & Technical Assistance

If you need assistance registering or have technical support questions, please send an email to IHSTeleEducation@ihs.gov describing your issue.